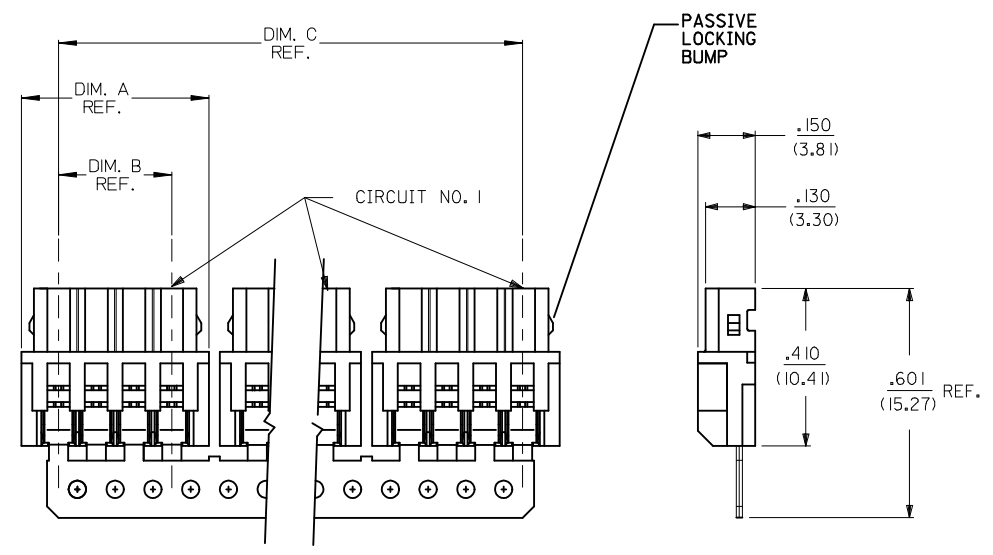


DISCRETE CONN. CKT SIZE	NO OF CONN. IN CHAIN	DIM. A	DIM. B	DIM. C	PASSIVE LOCKING BUMPS
2	10	.292 (7.42)	.098 (2.50)	2.756 (70.00)	YES
3	8	.390 (9.92)	.197 (5.00)	2.953 (75.00)	YES
4	6	.489 (12.42)	.295 (7.50)	2.756 (70.00)	YES
5	5	.587 (14.92)	.394 (10.00)	2.756 (70.00)	YES
6	4	.685 (17.40)	.492 (12.50)	2.556 (65.00)	YES
7	4	.783 (19.90)	.591 (15.00)	2.952 (75.00)	YES
8	3	.882 (22.40)	.689 (17.50)	2.461 (62.50)	YES
9	3	.980 (24.90)	.787 (20.00)	2.756 (70.00)	NO
10	2	1.079 (27.40)	.886 (22.50)	1.969 (50.00)	NO
11	2	1.177 (29.90)	.984 (25.00)	2.165 (55.00)	NO
12	2	1.276 (32.40)	1.082 (27.50)	2.362 (60.00)	NO
13	2	1.374 (34.90)	1.181 (30.00)	2.559 (65.00)	NO
14	2	1.472 (37.40)	1.279 (32.50)	2.756 (70.00)	NO
15	2	1.571 (39.90)	1.378 (35.00)	2.952 (75.00)	NO



- NOTES:
- MATERIAL:  
HOUSING: GLASS-FILLED POLYESTER (PBT), 94V-0, COLOR: NATURAL (WHITE)  
TERMINAL: PHOS. BRONZE
  - FINISH:  
(P909) OVERALL HOT TIN DIP: .000100/0.00254 MIN.
  - FOR PRODUCT SPEC'S SEE PS-42219-0001
  - PACKAGING SPECIFICATION: SEE LENGEND
  - THE WIRE TERMINATION SPEC IS SMES-42219-0002.
  - THIS PART CONFORMS TO CLASS B REQUIREMENTS OF COSMETIC SPECIFICATION PS-45499-002.

42219-N\*\*\*  
 NO OF CKTS ———  
 HOUSING COLOR ———  
 A= (NATURAL)  
 PACKAGING SPEC.  
 BLANK= PK-70873-0140 (LARGE BOX)  
 TERMINAL  
 BLANK=42218

REMOVE COLOR OPT. EC NO: UCP2014-2718 DRAWN:KIPPER 2014/01/03 CHKD:JBELL 2014/01/03 APPR:FSMITH 2014/01/13	QUALITY SYMBOLS	GENERAL TOLERANCES (UNLESS SPECIFIED)	DIMENSION STYLE IN/MM	SCALE 4:1	DESIGN UNITS METRIC	THIRD ANGLE PROJECTION
	▽=0	4 PLACES ± --- ± ---	mm INCH	DRAWN BY DATE AG 1989/02/06	TITLE 2.5MM I.D.T. CONNECTOR ASSEMBLY	
	▽=0	3 PLACES ± --- ± .010		CHECKED BY DATE RE 1989/02/06	DOCUMENT NO. SDA-42219-* SHEET NO. 1 OF 2	
	▽=0	2 PLACES ± 0.25 ± .014		APPROVED BY DATE FSMITH 2014/01/13		
REV	DESCRIPTION	ANGULAR ±1/2°	MATERIAL NO. SEE CHART	THIS DRAWING CONTAINS INFORMATION THAT IS PROPRIETARY TO MOLEX INCORPORATED AND SHOULD NOT BE USED WITHOUT WRITTEN PERMISSION		
J2		DRAFT WHERE APPLICABLE MUST REMAIN WITHIN DIMENSIONS	SIZE C			

13 12 11 10 9 8 7 6 5 4 3 2 1

A-42219-NA

PART NO.	ENG. NO.
22-43-3020	A-42219-2A
22-43-3030	A-42219-3A
22-43-3040	A-42219-4A
22-43-3050	A-42219-5A
22-43-3060	A-42219-6A
22-43-3070	A-42219-7A
22-43-3080	A-42219-8A
22-43-3090	A-42219-9A
22-43-3100	A-42219-10A
22-43-3110	A-42219-11A
22-43-3120	A-42219-12A
22-43-3130	A-42219-13A
22-43-3140	A-42219-14A
22-43-3150	A-42219-15A

SEE SHEET 1 EC NO: UCP2014-2718 DRAWN: KIPPER 2014/01/03 CHKD: BELLE 2014/01/03 APPR: FSMITH 2014/01/13	QUALITY SYMBOLS	GENERAL TOLERANCES (UNLESS SPECIFIED)	DIMENSION STYLE IN/MM	SCALE ---	DESIGN UNITS METRIC	THIRD ANGLE PROJECTION
	▽=0	mm INCH	DRAWN BY DATE AG 1989/02/06	TITLE 2.5MM I.D.T. CONNECTOR ASSEMBLY		
	▽=0	4 PLACES ± --- ± ---	CHECKED BY DATE RE 1989/02/06	<b>molex</b>		
	▽=0	3 PLACES ± --- ±.010	APPROVED BY DATE FSMITH 2014/01/13			
J2	DESCRIPTION	ANGULAR ±1/2°	SEE CHART		SDA-42219-*	2 OF 2
DRAFT WHERE APPLICABLE MUST REMAIN WITHIN DIMENSIONS		THIS DRAWING CONTAINS INFORMATION THAT IS PROPRIETARY TO MOLEX INCORPORATED AND SHOULD NOT BE USED WITHOUT WRITTEN PERMISSION				