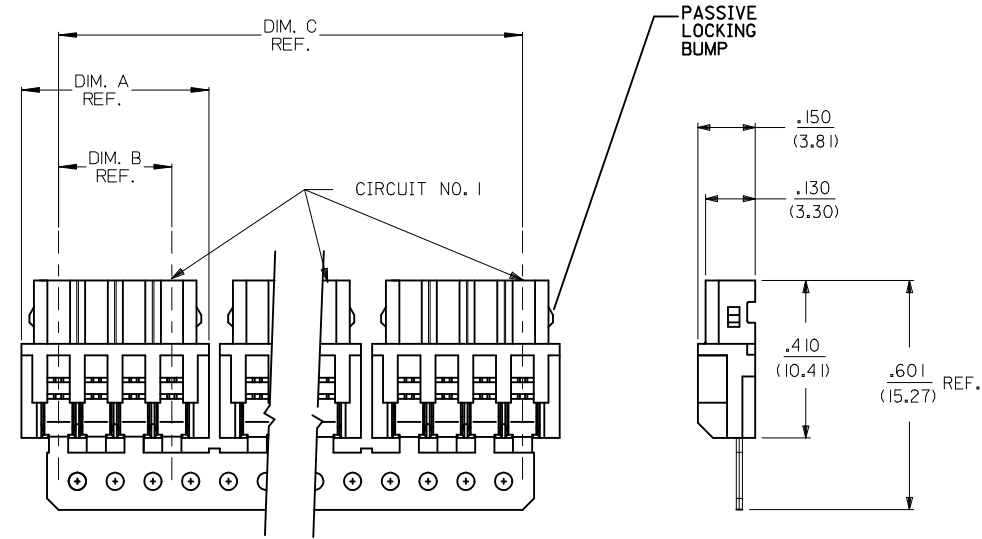
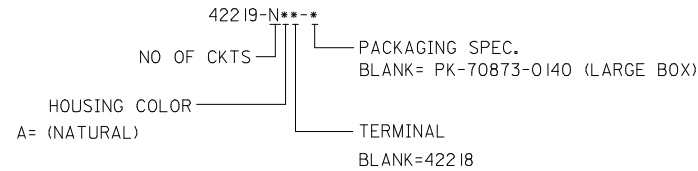


DISCRETE CONN. CKT SIZE	NO OF CONN. IN CHAIN	DIM. A	DIM. B	DIM. C	PASSIVE LOCKING BUMPS
2	10	.292 (7.42)	.098 (2.50)	2.756 (70.00)	YES
3	8	.390 (9.92)	.197 (5.00)	2.953 (75.00)	YES
4	6	.489 (12.42)	.295 (7.50)	2.756 (70.00)	YES
5	5	.587 (14.92)	.394 (10.00)	2.756 (70.00)	YES
6	4	.685 (17.40)	.492 (12.50)	2.556 (65.00)	YES
7	4	.783 (19.90)	.591 (15.00)	2.952 (75.00)	YES
8	3	.882 (22.40)	.689 (17.50)	2.461 (62.50)	YES
9	3	.980 (24.90)	.787 (20.00)	2.756 (70.00)	NO
10	2	1.079 (27.40)	.886 (22.50)	1.969 (50.00)	NO
11	2	1.177 (29.90)	.984 (25.00)	2.165 (55.00)	NO
12	2	1.276 (32.40)	1.082 (27.50)	2.362 (60.00)	NO
13	2	1.374 (34.90)	1.181 (30.00)	2.559 (65.00)	NO
14	2	1.472 (37.40)	1.279 (32.50)	2.756 (70.00)	NO
15	2	1.571 (39.90)	1.378 (35.00)	2.952 (75.00)	NO



NOTES:

- MATERIAL:
HOUSING: GLASS-FILLED POLYESTER (PBT), 94V-0, COLOR: NATURAL (WHITE)
TERMINAL: PHOS. BRONZE
- FINISH:
(P909) OVERALL HOT TIN DIP: .000100/0.00254 MIN.
- FOR PRODUCT SPEC'S SEE PS-42219-0001
- PACKAGING SPECIFICATION: SEE LENGEND
- THE WIRE TERMINATION SPEC IS SMES-42219-0002.
- THIS PART CONFORMS TO CLASS B REQUIREMENTS OF COSMETIC SPECIFICATION PS-45499-002.



REMOVE COLOR OPT. EC NO: UCP2014-2718 DRAWN: KIPPER CHKD: J. BELL APPR: FSMITH	DESCRIPTION 2014/01/03 2014/01/03 2014/01/13	QUALITY SYMBOLS	GENERAL TOLERANCES (UNLESS SPECIFIED)	DIMENSION STYLE IN/MM	SCALE 4:1	DESIGN UNITS METRIC	THIRD ANGLE PROJECTION	
		▽=0	4 PLACES ± --- ± ---	DRAWN BY AG	DATE 1989/02/06	TITLE 2.5MM I.D.T. CONNECTOR ASSEMBLY		
		▽=0	3 PLACES ± --- ± .010	CHECKED BY RE	DATE 1989/02/06			
		▽=0	2 PLACES ± 0.25 ± .014	APPROVED BY FSMITH	DATE 2014/01/13	DOCUMENT NO. SDA-42219-*		
J2	REV	ANGULAR ±1/2°	DRAFT WHERE APPLICABLE MUST REMAIN WITHIN DIMENSIONS	SIZE C	THIS DRAWING CONTAINS INFORMATION THAT IS PROPRIETARY TO MOLEX INCORPORATED AND SHOULD NOT BE USED WITHOUT WRITTEN PERMISSION			SHEET NO. 1 OF 2

