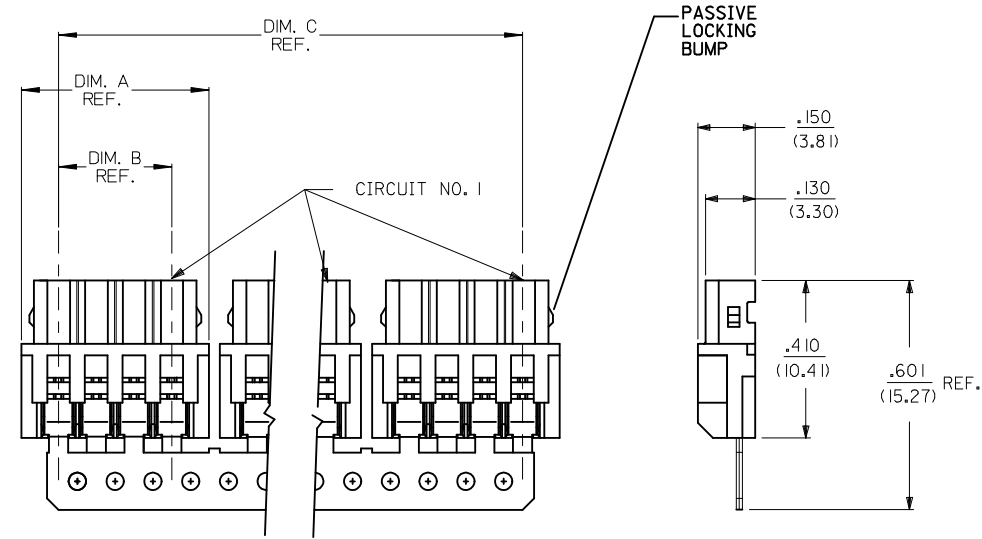
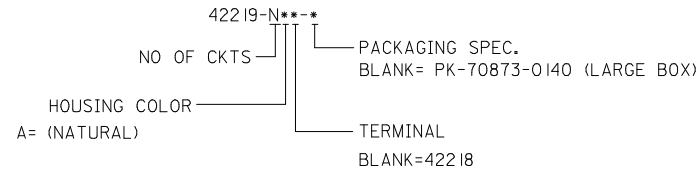


DISCRETE CONN. CKT SIZE	NO OF CONN. IN CHAIN	DIM. A	DIM. B	DIM. C	PASSIVE LOCKING BUMPS
2	10	.292 (7.42)	.098 (2.50)	2.756 (70.00)	YES
3	8	.390 (9.92)	.197 (5.00)	2.953 (75.00)	YES
4	6	.489 (12.42)	.295 (7.50)	2.756 (70.00)	YES
5	5	.587 (14.92)	.394 (10.00)	2.756 (70.00)	YES
6	4	.685 (17.40)	.492 (12.50)	2.556 (65.00)	YES
7	4	.783 (19.90)	.591 (15.00)	2.952 (75.00)	YES
8	3	.882 (22.40)	.689 (17.50)	2.461 (62.50)	YES
9	3	.980 (24.90)	.787 (20.00)	2.756 (70.00)	NO
10	2	1.079 (27.40)	.886 (22.50)	1.969 (50.00)	NO
11	2	1.177 (29.90)	.984 (25.00)	2.165 (55.00)	NO
12	2	1.276 (32.40)	1.082 (27.50)	2.362 (60.00)	NO
13	2	1.374 (34.90)	1.181 (30.00)	2.559 (65.00)	NO
14	2	1.472 (37.40)	1.279 (32.50)	2.756 (70.00)	NO
15	2	1.571 (39.90)	1.378 (35.00)	2.952 (75.00)	NO



NOTES:

- MATERIAL:
HOUSING: GLASS-FILLED POLYESTER (PBT), 94V-0, COLOR: NATURAL (WHITE)
TERMINAL: PHOS. BRONZE
- FINISH:
(P909) OVERALL HOT TIN DIP: .000100/0.00254 MIN.
- FOR PRODUCT SPEC'S SEE PS-42219-0001
- PACKAGING SPECIFICATION: SEE LENGEND
- THE WIRE TERMINATION SPEC IS SMES-42219-0002.
- THIS PART CONFORMS TO CLASS B REQUIREMENTS OF COSMETIC SPECIFICATION PS-45499-002.



REMOVE COLOR OPT. EC NO: UCP2014-2718 DRAWN: KIPPER CHKD: J.BELL APPR: FSMITH	DESCRIPTION 2014/01/03 2014/01/03 2014/01/13	QUALITY SYMBOLS	GENERAL TOLERANCES (UNLESS SPECIFIED)	DIMENSION STYLE	SCALE	DESIGN UNITS	THIRD ANGLE PROJECTION
		▽=0	mm INCH	IN/MM	4:1	METRIC	☉
		▽=0	4 PLACES ± --- ± ---	DRAWN BY DATE	TITLE	DOCUMENT NO.	SHEET NO.
		▽=0	3 PLACES ± --- ± .010	AG 1989/02/06			
	2 PLACES ± 0.25 ± .014	CHECKED BY DATE	2.5MM I.D.T. CONNECTOR ASSEMBLY		SDA-42219-*	1 OF 2	
	1 PLACE ± 0.36 ± ---	RE 1989/02/06	molex				
	0 PLACE ± --- ± ---	APPROVED BY DATE	SEE CHART		THIS DRAWING CONTAINS INFORMATION THAT IS PROPRIETARY TO MOLEX INCORPORATED AND SHOULD NOT BE USED WITHOUT WRITTEN PERMISSION		
		FSMITH 2014/01/13	ANGULAR ±1/2°				
J2	REV		DRAFT WHERE APPLICABLE MUST REMAIN WITHIN DIMENSIONS				

13 12 11 10 9 8 7 6 5 4 3 2 1

A-42219-NA

PART NO.	ENG. NO.
22-43-3020	A-42219-2A
22-43-3030	A-42219-3A
22-43-3040	A-42219-4A
22-43-3050	A-42219-5A
22-43-3060	A-42219-6A
22-43-3070	A-42219-7A
22-43-3080	A-42219-8A
22-43-3090	A-42219-9A
22-43-3100	A-42219-10A
22-43-3110	A-42219-11A
22-43-3120	A-42219-12A
22-43-3130	A-42219-13A
22-43-3140	A-42219-14A
22-43-3150	A-42219-15A

SEE SHEET 1 EC NO: UCP2014-2718 DRWN:KIPPER 2014/01/03 CHKD:JBELL 2014/01/03 APPR:FSMITH 2014/01/13	QUALITY SYMBOLS ▽=0 ▽=0 ▽=0	GENERAL TOLERANCES (UNLESS SPECIFIED) <table border="1"> <thead> <tr> <th></th> <th>mm</th> <th>INCH</th> </tr> </thead> <tbody> <tr><td>4 PLACES</td><td>± .005</td><td>± .0005</td></tr> <tr><td>3 PLACES</td><td>± .005</td><td>± .010</td></tr> <tr><td>2 PLACES</td><td>± 0.25</td><td>± .014</td></tr> <tr><td>1 PLACE</td><td>± 0.36</td><td>± .014</td></tr> <tr><td>0 PLACE</td><td>± .005</td><td>± .0005</td></tr> </tbody> </table>		mm	INCH	4 PLACES	± .005	± .0005	3 PLACES	± .005	± .010	2 PLACES	± 0.25	± .014	1 PLACE	± 0.36	± .014	0 PLACE	± .005	± .0005	DIMENSION STYLE IN/MM DRAWN BY DATE AG 1989/02/06 CHECKED BY DATE RE 1989/02/06 APPROVED BY DATE FSMITH 2014/01/13	SCALE --- DESIGN UNITS METRIC THIRD ANGLE PROJECTION	TITLE 2.5MM I.D.T. CONNECTOR ASSEMBLY
		mm	INCH																				
4 PLACES	± .005	± .0005																					
3 PLACES	± .005	± .010																					
2 PLACES	± 0.25	± .014																					
1 PLACE	± 0.36	± .014																					
0 PLACE	± .005	± .0005																					
DRAFT WHERE APPLICABLE MUST REMAIN WITHIN DIMENSIONS	ANGULAR ±1/2°	MATERIAL NO. SEE CHART	DOCUMENT NO. SDA-42219-*	SHEET NO. 2 OF 2																			

12 11 10 9 8 7 6 5 4 3 2 1