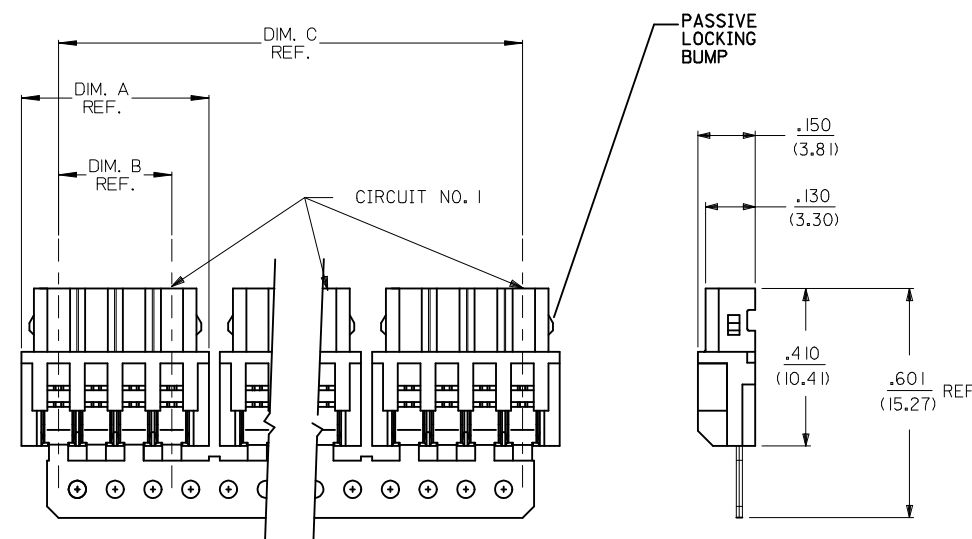


DISCRETE CONN. CKT SIZE	NO OF CONN. IN CHAIN	DIM. A	DIM. B	DIM. C	PASSIVE LOCKING BUMPS
2	10	.292 (7.42)	.098 (2.50)	2.756 (70.00)	YES
3	8	.390 (9.92)	.197 (5.00)	2.953 (75.00)	YES
4	6	.489 (12.42)	.295 (7.50)	2.756 (70.00)	YES
5	5	.587 (14.92)	.394 (10.00)	2.756 (70.00)	YES
6	4	.685 (17.40)	.492 (12.50)	2.556 (65.00)	YES
7	4	.783 (19.90)	.591 (15.00)	2.952 (75.00)	YES
8	3	.882 (22.40)	.689 (17.50)	2.461 (62.50)	YES
9	3	.980 (24.90)	.787 (20.00)	2.756 (70.00)	NO
10	2	1.079 (27.40)	.886 (22.50)	1.969 (50.00)	NO
11	2	1.177 (29.90)	.984 (25.00)	2.165 (55.00)	NO
12	2	1.276 (32.40)	1.082 (27.50)	2.362 (60.00)	NO
13	2	1.374 (34.90)	1.181 (30.00)	2.559 (65.00)	NO
14	2	1.472 (37.40)	1.279 (32.50)	2.756 (70.00)	NO
15	2	1.571 (39.90)	1.378 (35.00)	2.952 (75.00)	NO



- NOTES:
- MATERIAL:
HOUSING: GLASS-FILLED POLYESTER (PBT), 94V-0, COLOR: NATURAL (WHITE)
TERMINAL: PHOS. BRONZE
 - FINISH:
(P909) OVERALL HOT TIN DIP: .000100/0.00254 MIN.
 - FOR PRODUCT SPEC'S SEE PS-42219-0001
 - PACKAGING SPECIFICATION: SEE LENGEND
 - THE WIRE TERMINATION SPEC IS SMES-42219-0002.
 - THIS PART CONFORMS TO CLASS B REQUIREMENTS OF COSMETIC SPECIFICATION PS-45499-002.

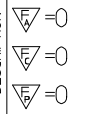
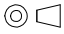
42219-N***
 NO OF CKTS ———
 HOUSING COLOR ———
 A= (NATURAL)
 PACKAGING SPEC.
 BLANK= PK-70873-0140 (LARGE BOX)
 TERMINAL
 BLANK=42218

REMOVE COLOR OPT. EC NO: UCP2014-2718 DRWN:KIPPER 2014/01/03 CHKD:JBELL 2014/01/03 APPR:FSMITH 2014/01/13	DESCRIPTION REV	QUALITY SYMBOLS	GENERAL TOLERANCES (UNLESS SPECIFIED)	DIMENSION STYLE IN/MM	SCALE 4:1	DESIGN UNITS METRIC	THIRD ANGLE PROJECTION
		▽=0	mm INCH	DRAWN BY DATE AG 1989/02/06	TITLE 2.5MM I.D.T. CONNECTOR ASSEMBLY		
		▽=0	4 PLACES ± --- ± ---	CHECKED BY DATE RE 1989/02/06			
		▽=0	3 PLACES ± --- ± .010	APPROVED BY DATE FSMITH 2014/01/13			
	2 PLACES ± 0.25 ± .014	MATERIAL NO. SEE CHART	DOCUMENT NO. SDA-42219-*				
J2			0 PLACE ± 0.36 ± ---	SIZE C	THIS DRAWING CONTAINS INFORMATION THAT IS PROPRIETARY TO MOLEX INCORPORATED AND SHOULD NOT BE USED WITHOUT WRITTEN PERMISSION		
			ANGULAR ±1/2°				SHEET NO. 1 OF 2

13 12 11 10 9 8 7 6 5 4 3 2 1

A-42219-NA

PART NO.	ENG. NO.
22-43-3020	A-42219-2A
22-43-3030	A-42219-3A
22-43-3040	A-42219-4A
22-43-3050	A-42219-5A
22-43-3060	A-42219-6A
22-43-3070	A-42219-7A
22-43-3080	A-42219-8A
22-43-3090	A-42219-9A
22-43-3100	A-42219-10A
22-43-3110	A-42219-11A
22-43-3120	A-42219-12A
22-43-3130	A-42219-13A
22-43-3140	A-42219-14A
22-43-3150	A-42219-15A

SEE SHEET 1 EC NO: UCP2014-2718 DRWN:KIPPER 2014/01/03 CHKD:JBELL 2014/01/03 APPR:FSMITH 2014/01/13	QUALITY SYMBOLS 	GENERAL TOLERANCES (UNLESS SPECIFIED)		DIMENSION STYLE IN/MM		SCALE ---	DESIGN UNITS METRIC	 THIRD ANGLE PROJECTION
		4 PLACES ± --- ± --- 3 PLACES ± --- ± .010 2 PLACES ± 0.25 ± .014 1 PLACE ± 0.36 ± --- 0 PLACE ± --- ± ---	mm INCH ± --- ± --- ± .010 ± .014 ± ---	DRAWN BY DATE AG 1989/02/06	CHECKED BY DATE RE 1989/02/06	TITILE 2.5MM I.D.T. CONNECTOR ASSEMBLY		
J2	DESCRIPTION	ANGULAR ±1/2°		MATERIAL NO. SEE CHART		DOCUMENT NO. SDA-42219-*		SHEET NO. 2 OF 2
DRAFT WHERE APPLICABLE MUST REMAIN WITHIN DIMENSIONS		THIS DRAWING CONTAINS INFORMATION THAT IS PROPRIETARY TO MOLEX INCORPORATED AND SHOULD NOT BE USED WITHOUT WRITTEN PERMISSION						

12 11 10 9 8 7 6 5 4 3 2 1