

NOTES:

1. MATERIALS:

HOUSING: GLASS-FILLED LIQUID CRYSTAL POLYMER (LCP), UL94 V-0, COLOR: BLACK
 TAIL ALIGNER: GLASS-FILLED LIQUID CRYSTAL POLYMER (LCP),
 TERMINAL: PHOSPHOR BRONZE
 BRACKET: BRASS
 SHELL: STEEL
 INSERT: BRASS

2. FINISHES:

TERMINAL: 0.05-0.25 MICROMETERS GOLD FLASH IN CRITICAL AREA
 OVER 0.75 MICROMETERS MINIMUM PALLADIUM NICKEL IN
 CRITICAL AREA. 1.87 MICROMETERS MINIMUM TIN IN
 SOLDER TAIL AREA OVER A NICKEL UNDERPLATE.
 SHIELD: 3.8 MICROMETERS MINIMUM BRIGHT TIN OVER NICKEL.
 INSERT: 2.54 MICROMETERS MINIMUM NICKEL.

3. PART CONFORMS TO MOLEX PRODUCT SPECIFICATION PS-71425-9999.

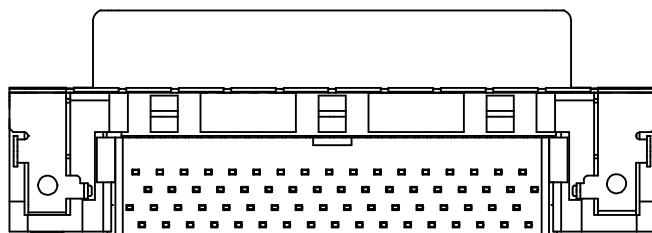
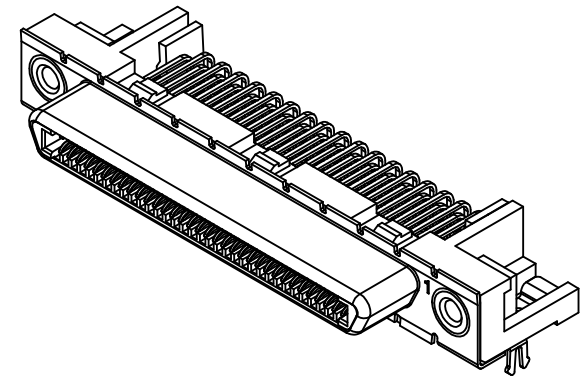
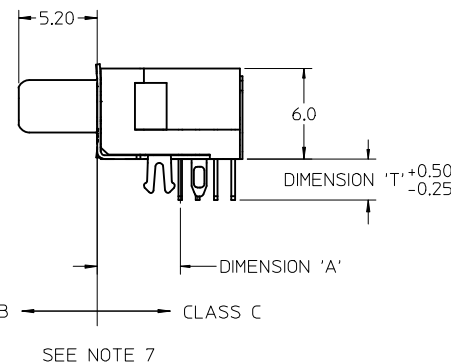
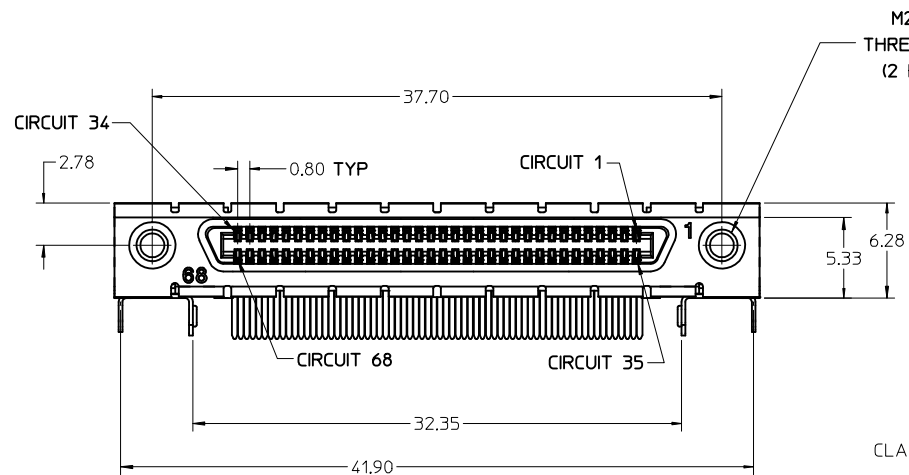
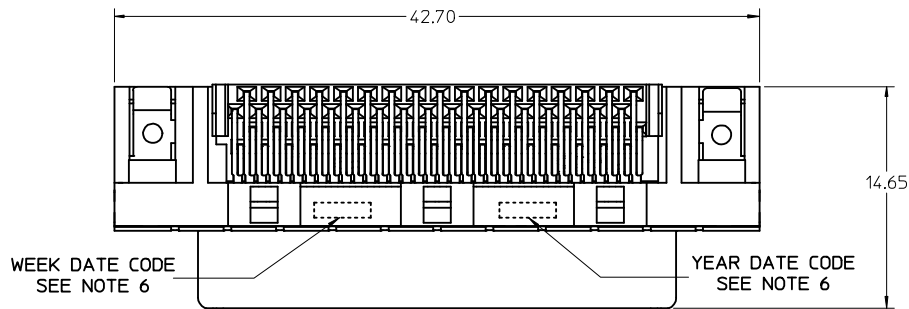
4. PACKAGED PER PK-71430-0101.

5. APPLICABLE STANDARDS: EIA-3652 AND SFF-8441.

6. DATE CODE: YR/WK PER EIA-476-A.

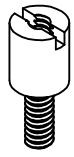
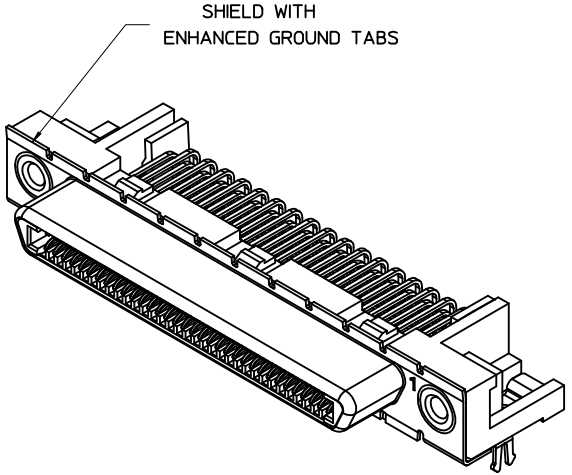
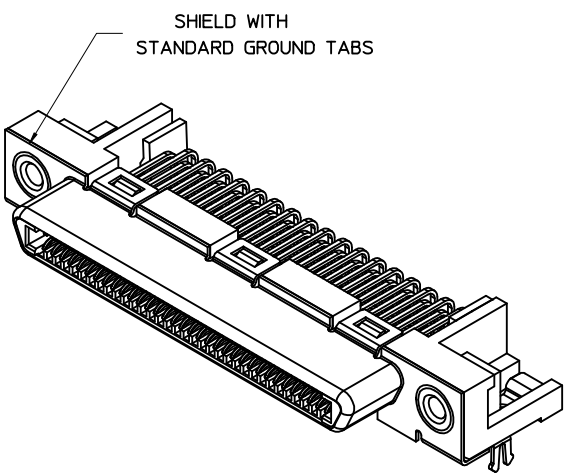
**7. PRODUCT COMPLIES WITH COSMETIC SPECIFICATION PS-45499-002.
 SEE SIDE VIEW FOR SURFACE CLASSIFICATIONS.**

**8. TORQUE TO INSTALL SCREWLOCKS INTO THREADED INSERTS:
 0.34 Nm MAXIMUM.**



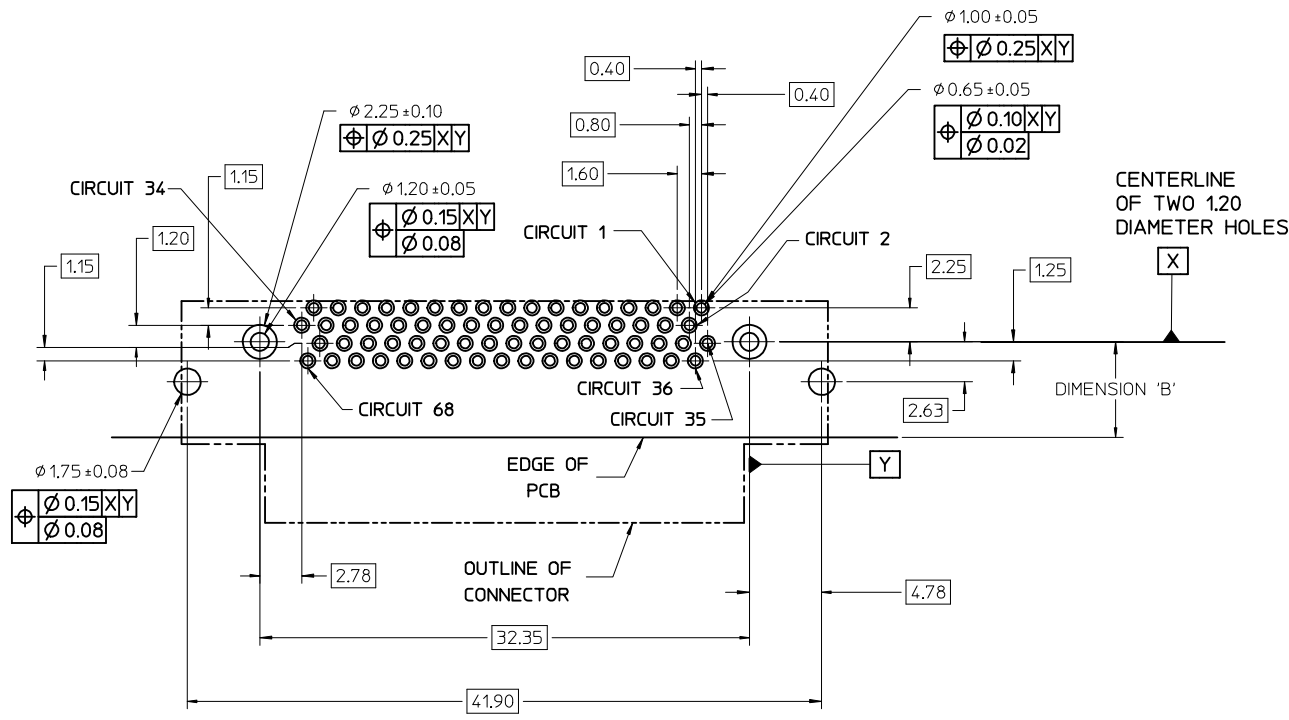
FIX TAIL TOLERANCE EC NO: UCP2012-3896 DRW: BARKER 2012/05/29 CHKD: MWLF APPR: SMILLER 2012/08/31	QUALITY SYMBOLS ∇=0 ∇=0 ∇=0	GENERAL TOLERANCES (UNLESS SPECIFIED)		DIMENSION STYLE MM ONLY	SCALE 4:1	DESIGN UNITS METRIC	THIRD ANGLE PROJECTION	
		4 PLACES ± --- ± ---	DRAWN BY KSTILES	DATE 11/14/2002	TITLE VHDCl RIGHT ANGLE ASSEMBLY			
		3 PLACES ± --- ± ---	CHECKED BY KSTILES	DATE 11/15/2002	molex			
		2 PLACES ± 0.13 ± ---	APPROVED BY MBNAKIS	DATE 11/22/2002	MATERIAL NO. SEE SHEET 2	DOCUMENT NO. SD-71430-015	SHEET NO. 1 OF 3	
1 PLACE ± 0.25 ± ---	ANGULAR ±1/2°		THIS DRAWING CONTAINS INFORMATION THAT IS PROPRIETARY TO MOLEX INCORPORATED AND SHOULD NOT BE USED WITHOUT WRITTEN PERMISSION					
0 PLACE ± ±	DRAFT WHERE APPLICABLE MUST REMAIN WITHIN DIMENSIONS							

PCB THICKNESS	PART NUMBER	TAIL LENGTH *T* (SEE FIGURE FOR TOLERANCE)	ENHANCED GROUND TABS	SCREWLOCKS	TAIL LOC. *A*	HOLE LOCATION *B*
1.60	71430-0101	2.08	NO	NONE	5.5	6.50 MAXIMUM
1.60	71430-0007	2.08	NO	LOOSE IN BAGS		
1.60	71430-0005	2.08	YES	NONE		
1.60	71430-0008	2.08	YES	LOOSE IN BAGS		
2.36	71430-0268	2.71	NO	NONE		
2.36	71430-0006	2.71	NO	INSTALLED		
2.36	71430-0004	2.71	YES	NONE		
2.36	71430-0009	2.71	YES	INSTALLED		
2.36	71430-0016	2.71	NO	LOOSE IN BAGS		
2.36	71430-0019	2.71	YES	LOOSE IN BAGS		
2.36	71430-0012	2.71	YES	NONE	5.3	6.30 MAXIMUM
1.60	71430-0013	2.08	YES	NONE		



OPTIONAL SCREWLOCK
PART NUMBER 71433-0002

SEE SHEET 1 EC NO: UCP2012-3896 DRWN:BBARKER 2012/05/29 CHKD:MMOLFE APPR:SMILLER 2012/08/31	QUALITY SYMBOLS	GENERAL TOLERANCES (UNLESS SPECIFIED)	DIMENSION STYLE	SCALE	DESIGN UNITS	THIRD ANGLE PROJECTION
	▽=0	mm INCH	MM ONLY	4:1	METRIC	
	▽=0	4 PLACES ± --- ± ---	DRAWN BY DATE	TITLE VHDCI RIGHT ANGLE ASSEMBLY		
	▽=0	3 PLACES ± --- ± ---	KSTILES 11/14/2002			
	2 PLACES ± 0.13 ± ---	CHECKED BY DATE	MATERIAL NO. DOCUMENT NO. SHEET NO. SEE TABLE SD-71430-015 2 OF 3			
	1 PLACE ± 0.25 ± ---	KSTILES 11/15/2002				
	0 PLACE ± ±	APPROVED BY DATE	THIS DRAWING CONTAINS INFORMATION THAT IS PROPRIETARY TO MOLEX INCORPORATED AND SHOULD NOT BE USED WITHOUT WRITTEN PERMISSION			
	ANGULAR ±1/2°	MBNAKIS 11/22/2002				
	DRAFT WHERE APPLICABLE MUST REMAIN WITHIN DIMENSIONS	SIZE C				

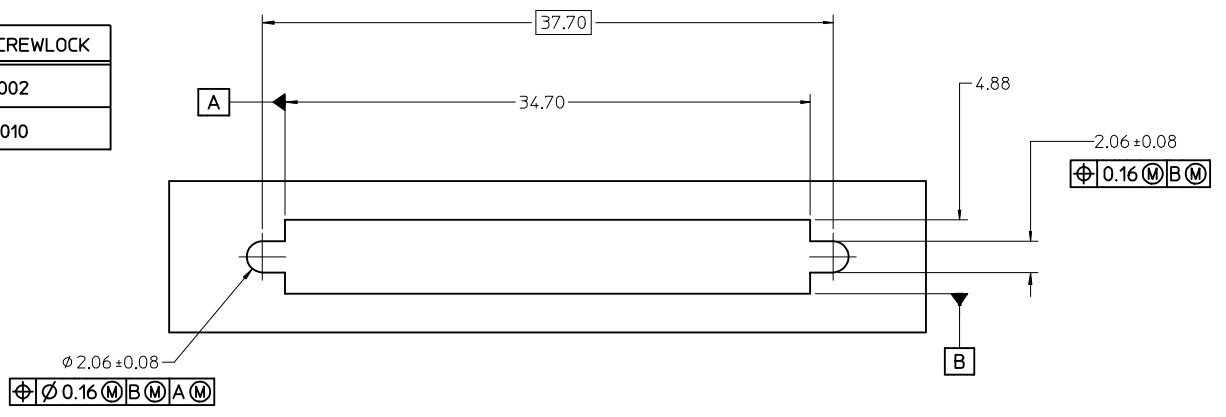


NOTES:

- FOR FULL MATE WITH PLUG, PANEL THICKNESS SHOULD NOT EXCEED 1.0mm.
FUNCTIONAL MATING WITH MOLEX PLUG CAN STILL BE MAINTAINED WITH PANELS AS THICK AS 2.5mm (BUT PLUG AND RECEPTACLE WILL NOT BE FULLY MATED).

2. GUIDELINES FOR CHOOSING A MOLEX SCREWLOCK:

PANEL THICKNESS	RECOMMENDED SCREWLOCK
LESS THAN OR EQUAL TO 1.00 MM	71433-0002
1.01 TO 2.15 MM	71433-0010



SEE SHEET 1 EC NO: UCP2012-3896 DRWN:BBARKER 2012/05/29 CHKD:HWOLFE APPR:SMILLER 2012/08/31	QUALITY SYMBOLS	GENERAL TOLERANCES (UNLESS SPECIFIED)	DIMENSION STYLE MM ONLY	SCALE 4:1	DESIGN UNITS METRIC	THIRD ANGLE PROJECTION
	▽=0	mm INCH	DRAWN BY DATE KSTILES 11/14/2002	TITLE VHCI RIGHT ANGLE ASSEMBLY		SHEET NO. 3 OF 3
	▽=0	4 PLACES ± --- ± ---	CHECKED BY DATE KSTILES 11/15/2002	SEE SHEET 2 SD-71430-015		
	▽=0	3 PLACES ± --- ± ---	APPROVED BY DATE MBNAKIS 11/22/2002			
	▽=0	2 PLACES ± 0.13 ± ---	MATERIAL NO.	DOCUMENT NO.		
	1 PLACE ± 0.25 ± ---	DRAFT WHERE APPLICABLE MUST REMAIN WITHIN DIMENSIONS		THIS DRAWING CONTAINS INFORMATION THAT IS PROPRIETARY TO MOLEX INCORPORATED AND SHOULD NOT BE USED WITHOUT WRITTEN PERMISSION		
	0 PLACE ± ±					

NOTES:

1. MATERIALS:

HOUSING: GLASS FILLED LIQUID CRYSTAL POLYMER (LCP),
UL94 V-0, COLOR:BLACK

TAIL ALIGNER: GLASS FILLED LIQUID CRYSTAL POLYMER (LCP),

TERMINAL: HIGH PERFORMANCE COPPER ALLOY

SHIELD: STEEL

THREADED INSERT: BRASS

2. FINISHES:

TERMINAL: 0.05-0.25 MICROMETERS GOLD FLASH IN CRITICAL AREA
OVER 0.75 MICROMETERS MINIMUM PALLADIUM NICKEL IN
CRITICAL AREA. 1.87 MICROMETERS MINIMUM MATTE TIN IN
SOLDER TAIL AREA. OVERALL NICKEL UNDERPLATE.

BRACKET: 5.0 MICROMETERS MINIMUM BRIGHT TIN OVER A COPPER UNDERPLATE.

SHIELD: 3.8 MICROMETERS MINIMUM BRIGHT TIN OVER 1.3 MICROMETERS
MINIMUM NICKEL OVER COPPER FLASH (OPTIONAL).

THREADED INSERT: 2.54 MICROMETERS MINIMUM NICKEL.

3. PART CONFORMS TO MOLEX PRODUCT SPECIFICATION PS-71425-9999.

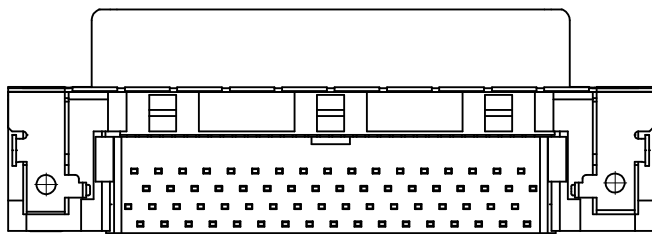
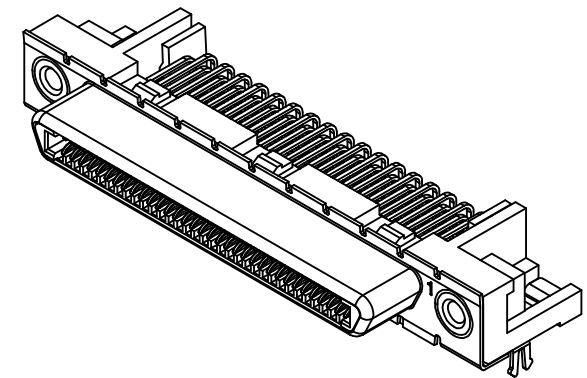
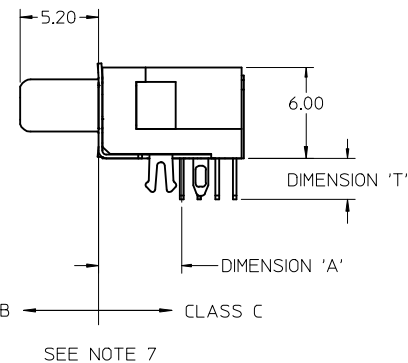
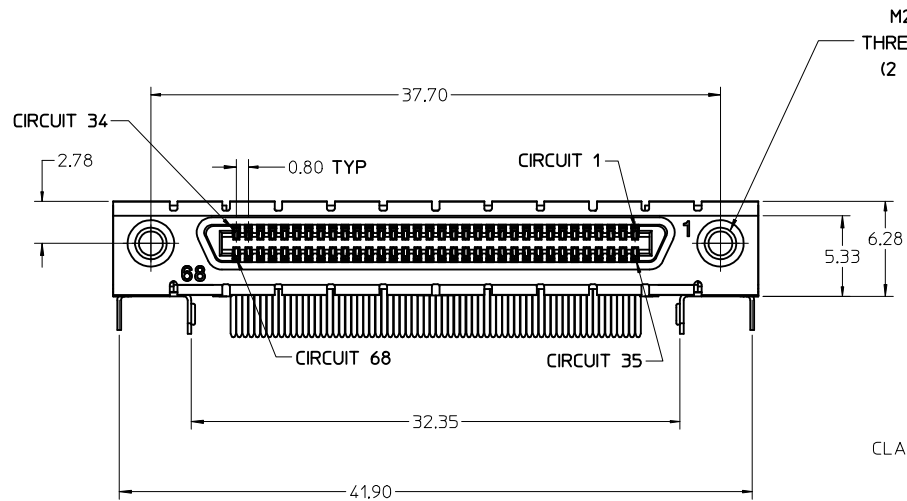
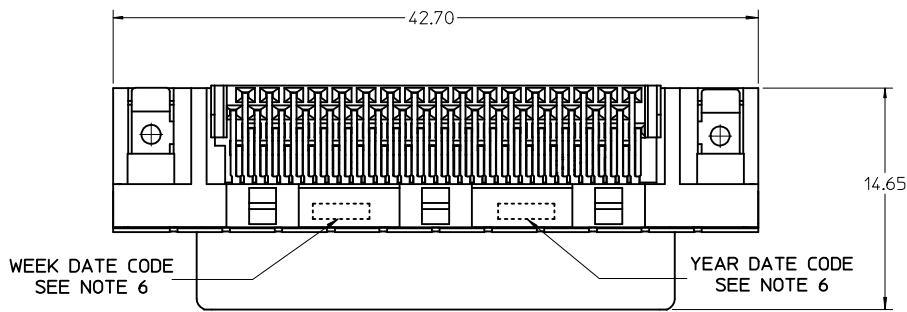
4. PRODUCT IS PACKAGED PER PK-71430-0101.

5. APPLICABLE STANDARDS: EIA-3652 AND SFF-8441.

6. DATE CODE: YR/WK PER EIA-476-A.

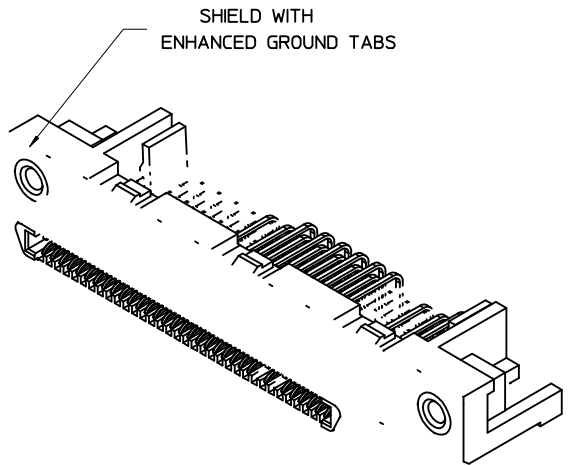
**7. PRODUCT COMPLIES WITH COSMETIC SPECIFICATION PS-45499-002.
SEE SIDE VIEW FOR SURFACE CLASSIFICATIONS.**

**8. TORQUE TO INSTALL SCREWLOCKS INTO THREADED INSERTS:
0.34 Nm MAXIMUM.**

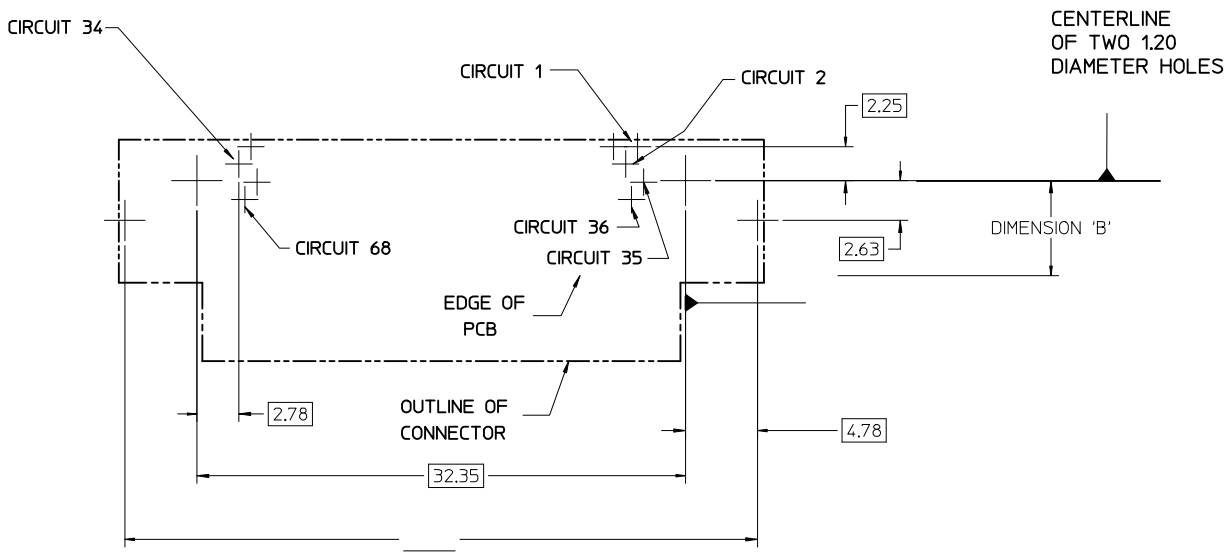


ADD PART 71430-3020 EC NO: UCP2015-5280 DRWN: TIBARRA 2015/06/12 CHKD: BBARKER 2015/06/30 APPR: SMILLER 2015/07/20	QUALITY SYMBOLS ▽=0 ▽=0 ▽=0	GENERAL TOLERANCES (UNLESS SPECIFIED)		DIMENSION STYLE MM ONLY		SCALE 4:1	DESIGN UNITS METRIC	THIRD ANGLE PROJECTION		
		mm	INCH	DRAWN BY	DATE	TITLE VHDCI RIGHT ANGLE ASSEMBLY molex DOCUMENT NO. SD-71430-3000 SHEET NO. 1 OF 3				
		4 PLACES ± --- ± ---	BBARKER 2011/02/17	CHECKED BY	DATE					
		3 PLACES ± --- ± ---	BSMART 2011/02/17	APPROVED BY	DATE					
2 PLACES ± 0.13 ± ---	SMILLER 2011/02/25	MATERIAL NO.	SEE TABLE							
1 PLACE ± 0.25 ± ---		DRAFT WHERE APPLICABLE MUST REMAIN WITHIN DIMENSIONS		SIZE C		THIS DRAWING CONTAINS INFORMATION THAT IS PROPRIETARY TO MOLEX INCORPORATED AND SHOULD NOT BE USED WITHOUT WRITTEN PERMISSION				
0 PLACE ± ±										

PCB THICKNESS	PART NUMBER	TAIL LENGTH "T" +0.50/-0.25	ENHANCED GROUND TABS	SCREWLOCKS (SEE GUIDELINE FOR CHOOSING A SCREWLOCK ON SHEET 3)	TAIL LOCATION "A"	PCB HOLE LOCATION "B"
1.60		2.08	NO	NONE	5.50	6.50 MAXIMUM
1.60		2.08	NO	71433-2002 LOOSE IN BAGS		
1.60		2.08	YES	NONE		
1.60		2.08	YES	71433-2002 LOOSE IN BAGS		
2.36		2.71	NO	NONE		
2.36		2.71	NO	71433-2002 INSTALLED		
2.36		2.71	YES	NONE		
2.36		2.71	YES	71433-2002 INSTALLED		
2.36		2.71	NO	71433-2002 LOOSE IN BAGS		
2.36	71430-3019	2.71	YES	71433-2002 LOOSE IN BAGS		
2.79	71430-3020	3.62	YES	71433-2002 LOOSE IN BAGS	5.30	6.30 MAXIMUM
2.36		2.71	YES	NONE		
1.60		2.08	YES	NONE		



SEE SHEET 1 EC NO: UCP2015-5280 DRWNT:IBARRA 2015/06/12 CHKD:BBARKER 2015/06/30 APPR:SMILLER 2015/07/20	QUALITY SYMBOLS 	GENERAL TOLERANCES (UNLESS SPECIFIED)		DIMENSION STYLE MM ONLY	SCALE 4:1	DESIGN UNITS METRIC	THIRD ANGLE PROJECTION
		4 PLACES ± --- ± ---	mm INCH	DRAWN BY DATE BBARKER 2011/02/17	VHDCI RIGHT ANGLE ASSEMBLY 		
		3 PLACES ± --- ± ---		CHECKED BY DATE BSMART 2011/02/17			
		2 PLACES ± 0.13 ± ---		APPROVED BY DATE SMILLER 2011/02/25			
		1 PLACE ± 0.25 ± ---		MATERIAL NO.			
0 PLACE ± ±		DOCUMENT NO.					
ANGULAR ±1/2°		DRAFT WHERE APPLICABLE MUST REMAIN WITHIN DIMENSIONS		SEE TABLE SIZE		SD-71430-3000 SHEET NO. 2 OF 3	THIS DRAWING CONTAINS INFORMATION THAT IS PROPRIETARY TO MOLEX INCORPORATED AND SHOULD NOT BE USED WITHOUT WRITTEN PERMISSION





SEE SHEET 1 EC NO: UCP2015-5280 DRWN: TIBARRA 2015/06/12 CHKD: BBARKER 2015/06/30 APPR: SMILLER 2015/07/20	QUALITY SYMBOLS	GENERAL TOLERANCES (UNLESS SPECIFIED)	DIMENSION STYLE	SCALE	DESIGN UNITS	THIRD ANGLE PROJECTION
	▽=0	mm INCH	MM ONLY	4:1	METRIC	⊙
	▽=0	4 PLACES ± --- ± ---	DRAWN BY DATE	TITLE		
	▽=0	3 PLACES ± --- ± ---	BBARKER 2011/02/17	VHDCI RIGHT ANGLE ASSEMBLY		
	2 PLACES ± 0.13 ± ---	CHECKED BY DATE	mox DOCUMENT NO. SD-71430-3000 SHEET NO. 3 OF 3			
	1 PLACE ± 0.25 ± ---	BSMART 2011/02/17				
	0 PLACE ± ±	APPROVED BY DATE	THIS DRAWING CONTAINS INFORMATION THAT IS PROPRIETARY TO MOLEX INCORPORATED AND SHOULD NOT BE USED WITHOUT WRITTEN PERMISSION			
	ANGULAR ±1/2°	SMILLER 2011/02/25				
	DRAFT WHERE APPLICABLE MUST REMAIN WITHIN DIMENSIONS	MATERIAL NO.	SEE TABLE			