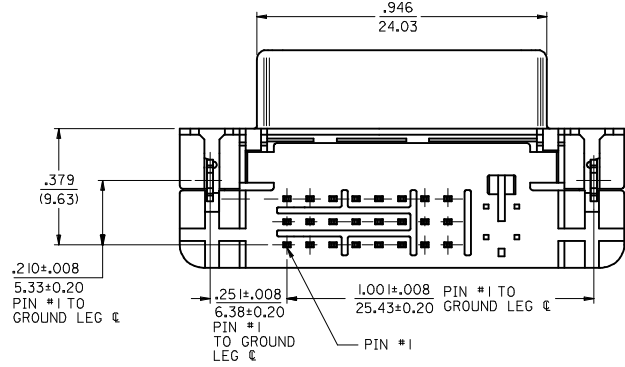
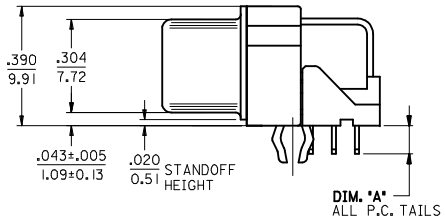
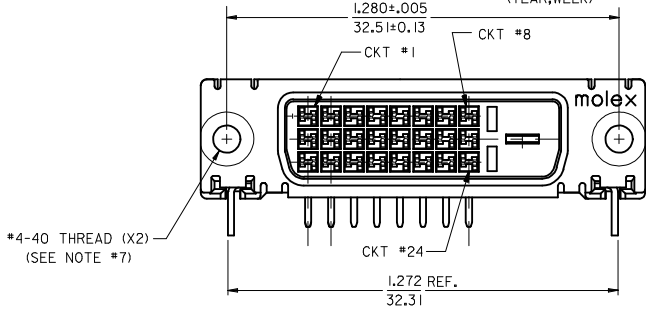
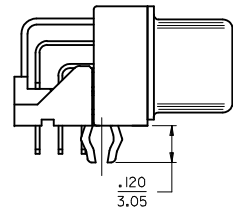


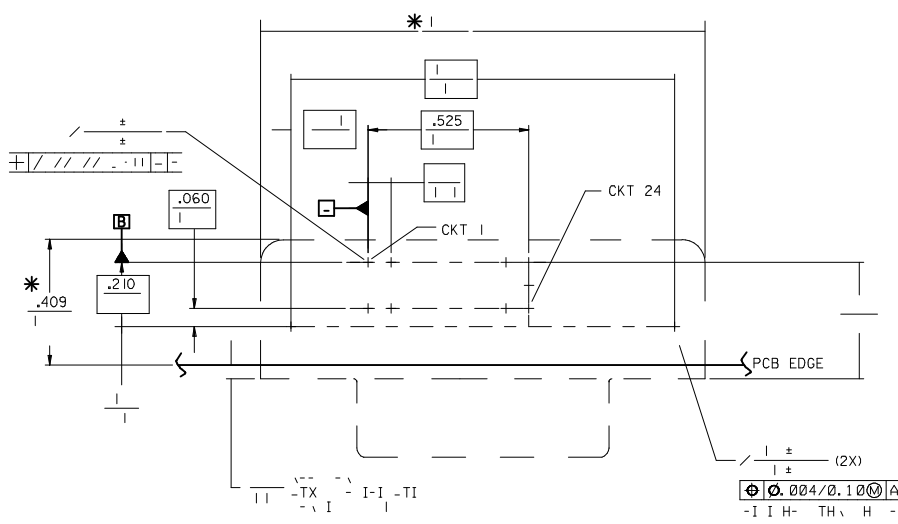
NOTES:

1. MATERIAL:
SHIELD: DEEP DRAW STEEL;
HOUSING: LCP, UL94V-0, NATURAL (WHITE);
TAIL ALIGNER: LCP, UL94V-0, NATURAL (WHITE);
CONTACT: COPPER ALLOY.
 2. PLATING: SEE SHEET 2.
 3. PRODUCT CONFORMS TO MOLEX PRODUCT SPECIFICATION NUMBER PS-74320-001.
 4. SEE SHEET 2 FOR RECOMMENDED PANEL CUT-OUT AND P.C.B. LAYOUT.
 5. PARTS WILL BE PACKAGED IN TRAYS PER PK-74320-010.
 6. PRODUCT CONFORMS TO DDWG DVI SPECIFICATION. REFER TO THIS SPECIFICATION FOR CONNECTOR MATING DIMENSIONS.
 7. RECOMMENDED MOUNTING HARDWARE IS MOLEX P/N 71781-0001 OR 82007-0300 OR 88780-6066. REFER TO PRODUCT SPECIFICATION NUMBER PS-74320-001 FOR THIS APPLICATION TORQUE REQUIREMENT FOR ASSEMBLING MOUNTING HARDWARE.
- ⚠ CAVITY ID AND MANUFACTURING PLANT CODE.

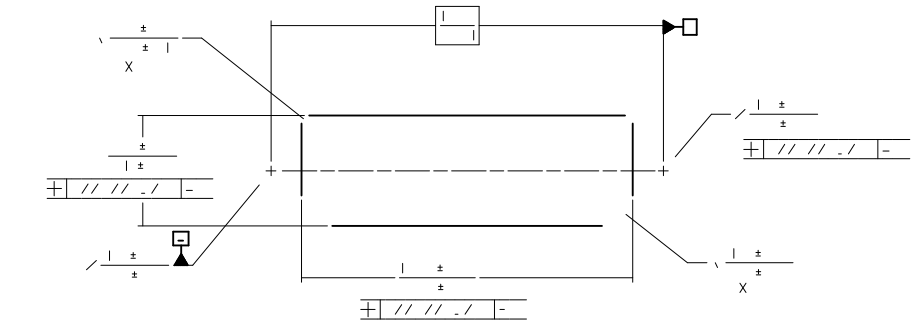


PART NUMBER	PLATING OPTION	DIM A
74320-9000	1	0.092/2.34
74320-9004	2	0.092/2.34
74320-9006	2	0.110/2.79

REVISED EC NO: SH2015-0200 DRW: X0ZHZHANG CHK: X0ZHZHANG APPR: AYIN	DESCRIPTION 2014/12/10 2014/12/10 2015/02/09	QUALITY SYMBOLS	GENERAL TOLERANCES (UNLESS SPECIFIED)	DIMENSION STYLE IN/MM	SCALE 1:1	DESIGN UNITS INCH	THIRD ANGLE PROJECTION																														
		$\nabla_A = 0$ $\nabla_C = 0$ $\nabla_P = 0$	<table border="1"> <thead> <tr> <th></th> <th>mm</th> <th>INCH</th> </tr> </thead> <tbody> <tr> <td>4 PLACES</td> <td>± ---</td> <td>± ---</td> </tr> <tr> <td>3 PLACES</td> <td>± ---</td> <td>± .010</td> </tr> <tr> <td>2 PLACES</td> <td>± 0.25</td> <td>± .010</td> </tr> <tr> <td>1 PLACE</td> <td>± 0.25</td> <td>± .010</td> </tr> <tr> <td>0 PLACE</td> <td>± ---</td> <td>± ---</td> </tr> </tbody> </table>		mm	INCH	4 PLACES	± ---	± ---	3 PLACES	± ---	± .010	2 PLACES	± 0.25	± .010	1 PLACE	± 0.25	± .010	0 PLACE	± ---	± ---	<table border="1"> <thead> <tr> <th>DRAWN BY</th> <th>DATE</th> <th>TITLE</th> </tr> </thead> <tbody> <tr> <td>XJSONG</td> <td>2011/08/19</td> <td rowspan="4">DVI-D/ATX RIGHT ANGLE RECEPTACLE CONNECTOR W/FORKLOCK</td> </tr> <tr> <td>CHECKED BY</td> <td>DATE</td> </tr> <tr> <td>APPROVED BY</td> <td>DATE</td> </tr> <tr> <td>RZHANG</td> <td>2011/08/22</td> </tr> </tbody> </table>	DRAWN BY	DATE	TITLE	XJSONG	2011/08/19	DVI-D/ATX RIGHT ANGLE RECEPTACLE CONNECTOR W/FORKLOCK	CHECKED BY	DATE	APPROVED BY	DATE	RZHANG	2011/08/22			
			mm	INCH																																	
		4 PLACES	± ---	± ---																																	
3 PLACES	± ---	± .010																																			
2 PLACES	± 0.25	± .010																																			
1 PLACE	± 0.25	± .010																																			
0 PLACE	± ---	± ---																																			
DRAWN BY	DATE	TITLE																																			
XJSONG	2011/08/19	DVI-D/ATX RIGHT ANGLE RECEPTACLE CONNECTOR W/FORKLOCK																																			
CHECKED BY	DATE																																				
APPROVED BY	DATE																																				
RZHANG	2011/08/22																																				
		ANGULAR ±0.5°	MATERIAL NO.																																		
		DRAFT WHERE APPLICABLE MUST REMAIN WITHIN DIMENSIONS	SEE TABLE																																		



RECOMMENDED PCB LAYOUT



TH

PLATING OPTIONS:

PLATING OPTION #1:

OUTER SHIELD -- 150u"/(3.75um) MIN. BRIGHT TIN OVER 50u"/(1.27um) MIN. NICKEL OVER COPPER FLASH

100u"/(2.50um) MIN. SELECT PURE TIN OVER 50u"/(1.27um) MIN. NICKEL OVERALL.

PLATING OPTION #2:

OUTER SHIELD -- 150u"/(3.75um) MIN. BRIGHT TIN OVER 50u"/(1.27um) MIN. NICKEL OVER COPPER FLASH

.075u"/(1.9mm) CONTACTS -- SELECT GOLD FLASH AND 100u"/(2.50um) MIN. SELECT PURE TIN OVER 50u"/(1.27um) MIN. NICKEL OVERALL.

SEE SHEET 1 EC NO: SH2015-0200 DRWN: XZZHANG 2014/12/10 CH'KD: XZZHANG 2014/12/10 APPR: AYIN 2015/02/09	QUALITY SYMBOLS $F_{\Delta} = 0$ $F_{\square} = 0$ $F_{\nabla} = 0$	GENERAL TOLERANCES (UNLESS SPECIFIED) <table border="1"> <thead> <tr> <th></th> <th>mm</th> <th>INCH</th> </tr> </thead> <tbody> <tr> <td>4 PLACES</td> <td>± .010</td> <td>± .0004</td> </tr> <tr> <td>3 PLACES</td> <td>± .020</td> <td>± .0008</td> </tr> <tr> <td>2 PLACES</td> <td>± .050</td> <td>± .0020</td> </tr> <tr> <td>1 PLACE</td> <td>± .125</td> <td>± .0050</td> </tr> <tr> <td>0 PLACE</td> <td>± .250</td> <td>± .0100</td> </tr> </tbody> </table>		mm	INCH	4 PLACES	± .010	± .0004	3 PLACES	± .020	± .0008	2 PLACES	± .050	± .0020	1 PLACE	± .125	± .0050	0 PLACE	± .250	± .0100	DIMENSION STYLE IN/MM DRAWN BY: XJSONG DATE: 2011/08/19 CHECKED BY: XJSONG DATE: 2011/08/19 APPROVED BY: RZHANG DATE: 2011/08/22	SCALE 1:1 DESIGN UNITS INCH THIRD ANGLE PROJECTION	TITLE DVI-D/ATX RIGHT ANGLE RECEPTACLE CONNECTOR W/FORKLOCK molex
		mm	INCH																				
	4 PLACES	± .010	± .0004																				
	3 PLACES	± .020	± .0008																				
2 PLACES	± .050	± .0020																					
1 PLACE	± .125	± .0050																					
0 PLACE	± .250	± .0100																					
	ANGULAR ±0.5° DRAFT WHERE APPLICABLE MUST REMAIN WITHIN DIMENSIONS	MATERIAL NO. SEE SHEET 1	DOCUMENT NO. SD-74320-009	SHEET NO. 2 OF 2																			
		SIZE A3 THIS DRAWING CONTAINS INFORMATION THAT IS PROPRIETARY TO MOLEX INCORPORATED AND SHOULD NOT BE USED WITHOUT WRITTEN PERMISSION																					