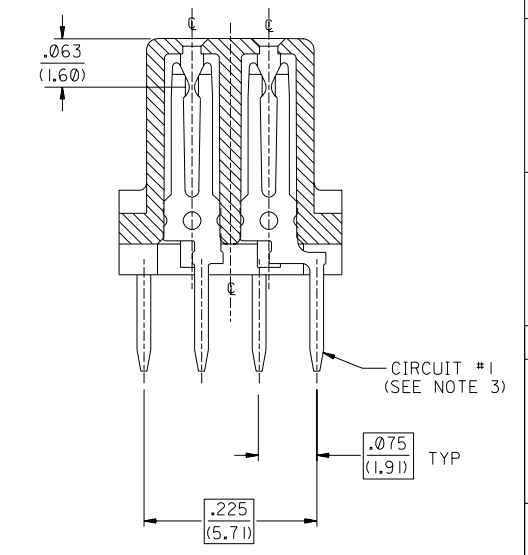
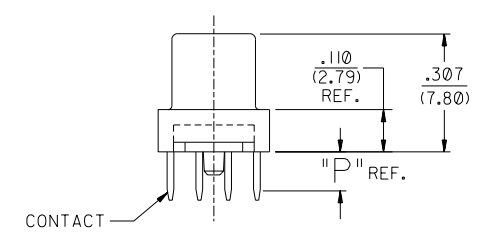
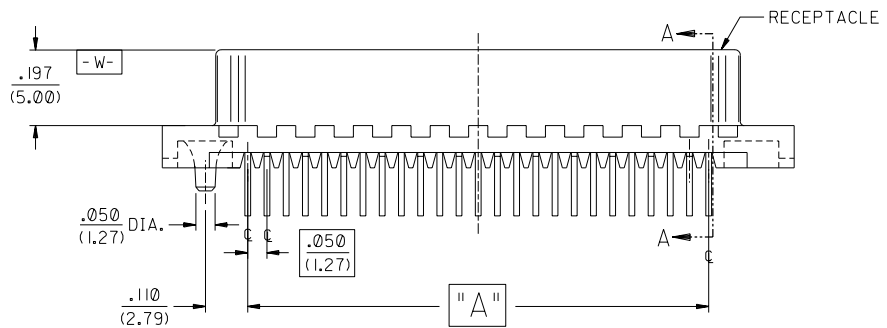
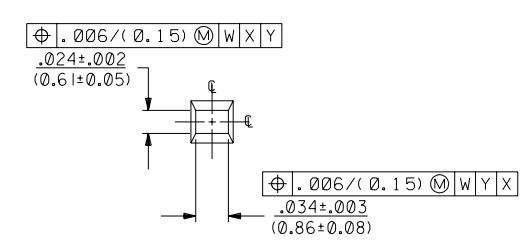
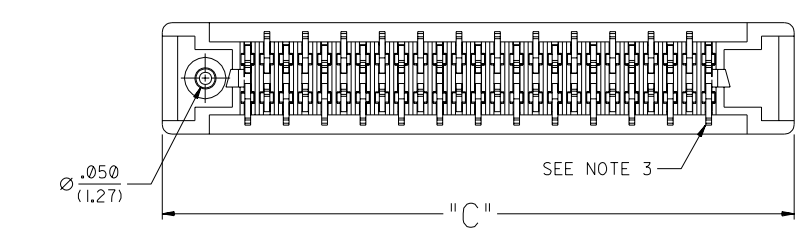


50 CIRCUIT SHOWN



SECTION "A-A"
SCALE 8:1



PIN WINDOW DETAIL
SCALE 10:1

NOTES:

- SEE SHEET 2 FOR PART NO.S AND CHARTED DIMENSIONS AND P.C. BOARD LAYOUT.
- 50 CIRCUIT SHOWN FOR ILLUSTRATION PURPOSES ONLY.
- TAIL PATTERN FIXED AT CIRCUIT NO. (1) POSITION FOR ALL CIRCUIT SIZES SHOWN.

DIMENSIONS SHOWN (METRIC) INCH		UNLESS OTHERWISE SPECIFIED TOLERANCES: ANGULAR $\pm 1/2^\circ$		REVISIONS		REVISIONS		MFG. SH. REV.	
3 PLACE	$\pm .010$	INCH	METRIC	1	1	2	1	1	1
2 PLACE	$\pm \dots$	± 0.25							
1 PLACE	\dots	$\pm \dots$							
DRAFT WHERE APPLICABLE MUST REMAIN WITHIN DIMENSIONS				DRWG. NO. SDA-70491-2***		SHEET NO. 1 of 2		DATE 06/17/92	
DRWG. BY J. Long		CHK'D. BY DCB		FILE NAME S7049121.DGN		PART NO. MOLEX INCORPORATED 60532		DIV. SIZE TC C	
APP'D. BY J D		SCALE 4:1		THIS DRAWING CONTAINS INFORMATION THAT IS PROPRIETARY TO MOLEX INC. AND SHOULD NOT BE USED WITHOUT WRITTEN PERMISSION.					

ITEM NO.	ENG NO.	CKT. SIZE	PLATING	DIM. A		DIM. B		DIM. C		DIM. P TAIL LENGTH	RECOMMENDED PCB		
				INCH	MM	INCH	MM	INCH	MM		INCH	MM	
	015-87-0301	70491-2001	50	GOLD 30	1.200	30.48	1.366	34.70	1.645	41.78	.125	.062 OR .093	1.57 OR 2.36
X	015-87-0302	70491-2002										OR	OR
	015-87-0303	70491-2003	50	GOLD 30	1.200	30.48	1.366	34.70	1.645	41.78	.165	.125	3.18
X	015-87-0304	70491-2004											
	015-87-0305	70491-2005	68	GOLD 30	1.650	41.91	1.816	46.13	2.095	53.21	.125	.062 OR .093	1.57 OR 2.36
X	015-87-0306	70491-2006										OR	OR
	015-87-0307	70491-2007	68	GOLD 30	1.650	41.91	1.816	46.13	2.095	53.21	.165	.125	3.18
X	015-87-0308	70491-2008											
	015-87-0309	70491-2009	50	GOLD 30	1.200	30.48	1.366	34.70	1.645	41.78	.080	.062	1.57
X	015-87-0310	70491-2010											
	015-87-0311	70491-2011	68	GOLD 30	1.650	41.91	1.816	46.13	2.095	53.21	.080	.062	1.57
X	015-87-0312	70491-2012											
	015-87-0313	70491-2013	68	GOLD 15	1.650	41.91	1.816	46.13	2.095	53.21	.125	.062 OR .093	1.57 OR 2.36
X	015-87-0314	70491-2014	68	GOLD 15	1.650	41.91	1.816	46.13	2.095	53.21	.080	.062	1.57

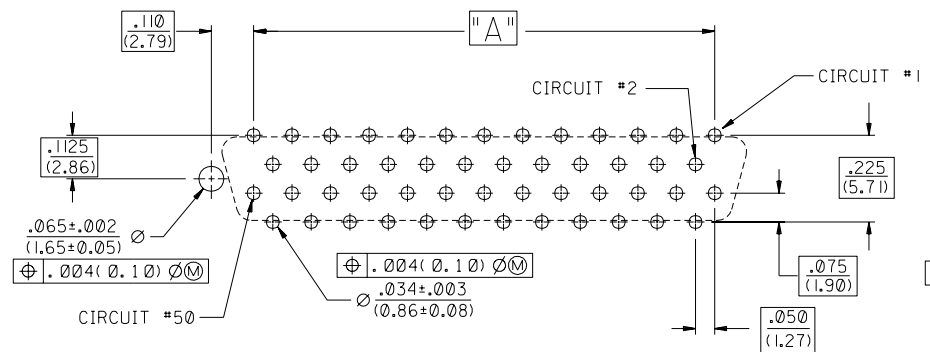
ASSEMBLY NO. LEGEND:

A-70491-2 ***

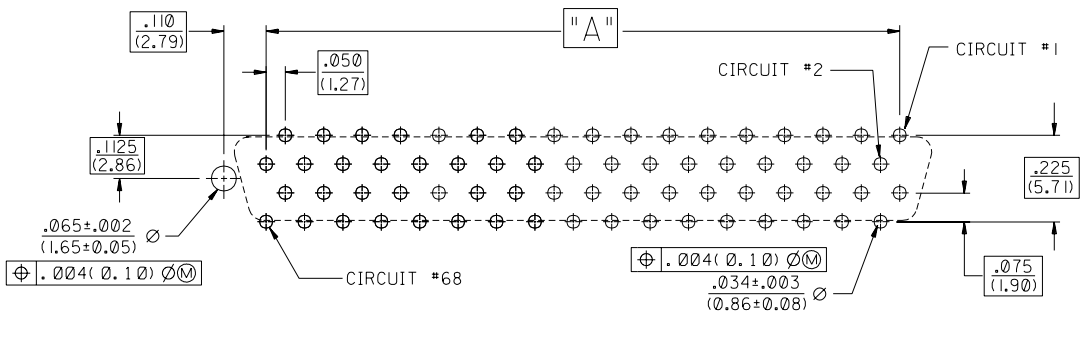
CIRCUIT SIZE, PLATING, AND TAIL LENGTH

LEFT PEG OPTION

X = INDICATED "NOT TOOLED"



RECOMMENDED 50 CKT. P.C. BOARD LAYOUT
CONNECTOR SIDE



RECOMMENDED 68 CKT. P.C. BOARD LAYOUT
CONNECTOR SIDE

NOTES:

- REFER TO PS-79058 PRODUCT SPEC. FOR ELECTRICAL, MECHANICAL AND ENVIRONMENTAL SPECIFICATIONS.
- MATERIAL:
RECEPTACLE HOUSING: GLASS FILLED LIQUID CRYSTAL POLYMER (LCP);
COLOR: BLACK; UL 94V-0
CONTACTS: PHOSPHOR BRONZE
- PACKAGING:
PARTS PACKAGED IN TUBES PER PK-70873-0427.
- FINISHES: TERMINALS:
(GOLD 15)
SELECTIVE GOLD: THICKNESS= 15 MICROINCHES/(0.38 MICROMETERS) MINIMUM.
SELECTIVE TIN: THICKNESS= 75 MICROINCHES/(1.90 MICROMETERS) MINIMUM.
NICKEL UNDERPLATE OVERALL.
(GOLD 30)
SELECTIVE GOLD: THICKNESS= 30 MICROINCHES/(0.76 MICROMETERS) MINIMUM.
SELECTIVE TIN: THICKNESS= 75 MICROINCHES/(1.90 MICROMETERS) MINIMUM.
NICKEL UNDERPLATE OVERALL.

NOTE FOR LEAD FREE CONVERSION:

THE PRIMARY SHIPPING CARTON WILL BE LABELED "COMPLIANT TO ROHS DIRECTIVE 2002/95/EC AND ELV ANNEX II OF DIRECTIVE 2000/53/EC". CARTONS WITHOUT THIS LABEL MAY CONTAIN PRODUCT WITH LEAD.

LTR.	REVISIONS	LTR.	REVISIONS

DIMENSIONS SHOWN (METRIC) INCH	
UNLESS OTHERWISE SPECIFIED TOLERANCES: ANGULAR ± 1/2°	
5 PLACE ± .010	---
2 PLACE ± ---	± 0.25
1 PLACE ---	± ---
DRAFT WHERE APPLICABLE MUST REMAIN WITHIN DIMENSIONS	
DRG. BY: J. Long	CHK'D. BY: DCB
APP'D. BY: J D	SCALE: :

▽ = 0	▼ = 0	REVISE ONLY ON CAD SYSTEM
TITLE: SALES SCSI ALL-PLASTIC VERTICAL RECEPTACLE ASSEMBLY WITH PEG		
MOLEX INCORPORATED	SHEET NO. 2	DATE 06/17/92
U.S.A.	DRWG. NO. SDA-70491-2***	
FILE NAME: 51049122.DGN	THIS DRAWING CONTAINS INFORMATION THAT IS PROPRIETARY TO MOLEX INC. AND SHOULD NOT BE USED WITHOUT WRITTEN PERMISSION.	
APP'D. BY: J D	DIV. TC	SIZE C

70491