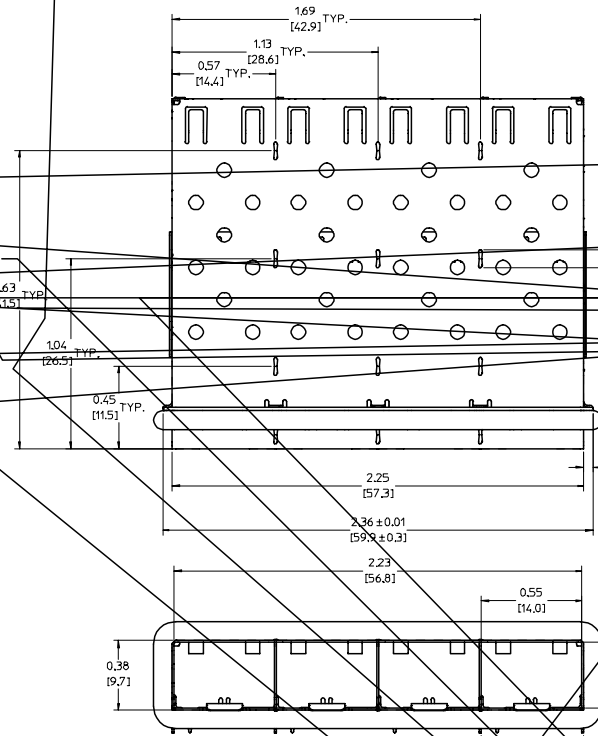
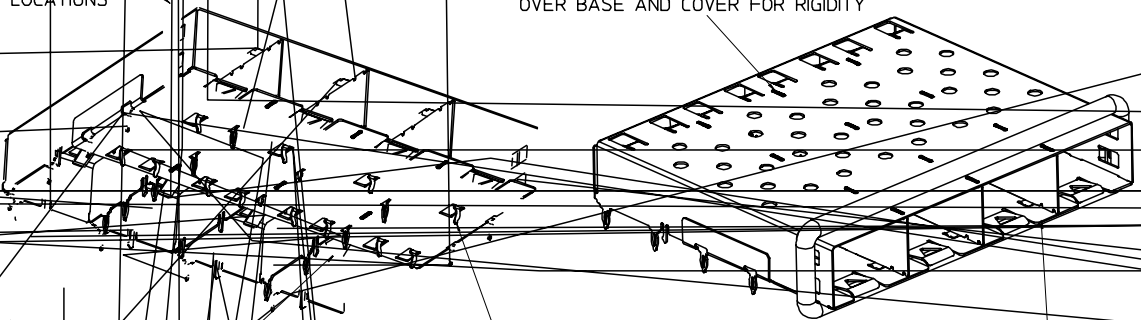


20 19 18 17 16 15 14 13 12 11 10 9 8 7 6 5 4 3 2 1



360° ELASTOMER GASKET
 COMPLIES WITH (SFP) MSA
 BOARD AND BEZEL LOCATIONS

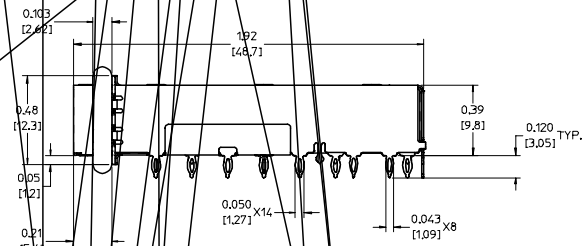
INNER WALL TABS ARE COINED
 OVER BASE AND COVER FOR RIGIDITY



EMI FINGERS
 CONTACT ADAPTER

12 UNDER BELLY EMI PINS

DIMENSIONS OF EACH INNER CAGE DESIGNED
 TO FUNCTION WITH SMALL FORM-FACTOR
 PLUGGABLE (SFP) TRANSCEIVER



NOTES:

1. PRESS FIT LEGS .120" LONG-
 0.062 [1.57] MINIMUM PCB THICKNESS FOR SINGLE SIDED USE.
 0.118 [3.00] MINIMUM PCB THICKNESS FOR BELLY TO BELLY USE.

2. MATERIAL: COPPER ALLOY
 PLATING: NONE

NOTE: A NICKEL PLATED VERSION OF THIS ASSEMBLY IS AVAILABLE.
 REFER TO DOCUMENT SD-74728-420.

3. REFERENCE DOCUMENTS:
 PRODUCT SPECIFICATION: PS-74728-000
 COSMETIC SPECIFICATIONS: WI-HP-7-2774 AND WI-HPA-7-0093
 TEST SUMMARY: TS-74728-0415

4. THIS PART MEETS THE RESTRICTION OF HAZARDOUS SUBSTANCES IN
 ELECTRICAL AND ELECTRONIC EQUIPMENT (ROHS) DIRECTIVE (2002/95/EC).

ENTER DESCRIPTION EC NO. UST2006-0079 DRAWN BY: KSRW/MS CHECKED BY: CHK/BRUSSELL APPROVED BY: JAP/BRUSSELL	QUALITY SYMBOLS	GENERAL TOLERANCES (UNLESS SPECIFIED)	DIMENSION STYLE	SCALE	DESIGN UNITS	THIRD ANGLE PROJECTION
	▽=0 ▽=0	mm INCH	IN/MM	3:1	METRIC	<input checked="" type="checkbox"/> THIRD ANGLE PROJECTION
	4 PLACES ± --- ± --- 3 PLACES ± --- ± .005 2 PLACES ± 0.13 ± .01 1 PLACE ± 0.25 ± --- ANGULAR ± 1°	DRAWN BY: KSRW/MS DATE: 2004/03/22 CHECKED BY: BRUSSELL DATE: 2004/03/22 APPROVED BY: BRUSSELL DATE: 2004/03/22	TITLE: 1X4 SFP GANGED CAGE ASSEMBLY W/ ELASTOMER GASKET, PRESS FIT MOLEX INCORPORATED			
	DRAFT WHERE APPLICABLE MUST REMAIN WITHIN DIMENSIONS	MATERIAL NO.: 739270411 DOCUMENT NO.: SD-73927-411	SHEET NO.: 1 OF 5			

19 18 17 16 15 14 13 12 11 10 9 8 7 6 5 4 3 2 1