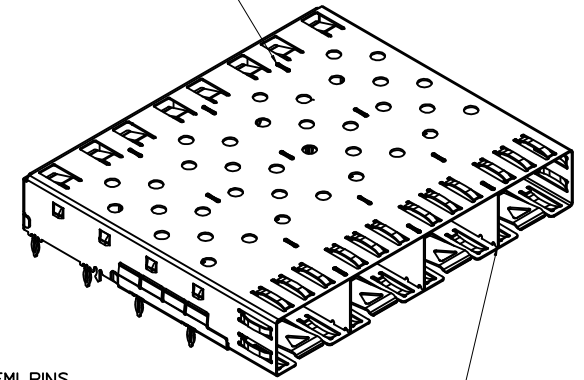
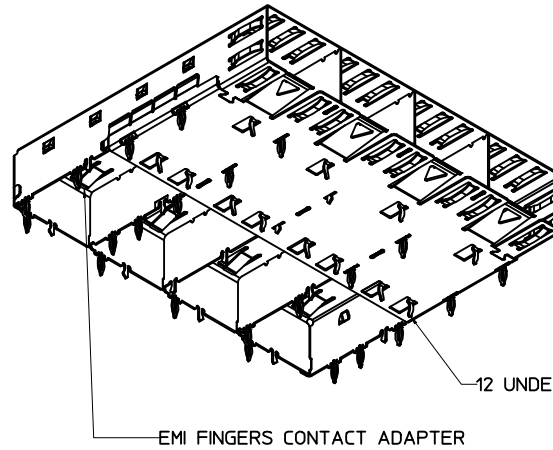
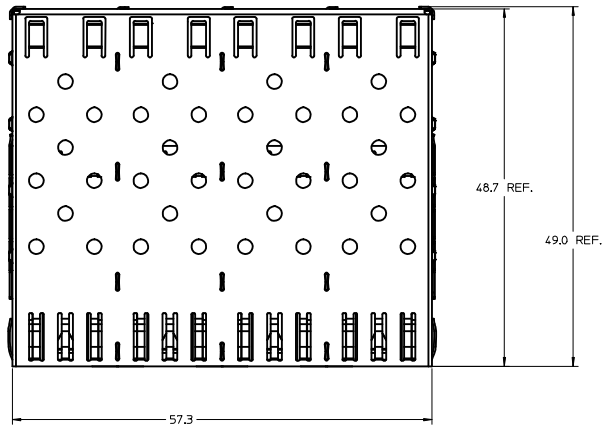
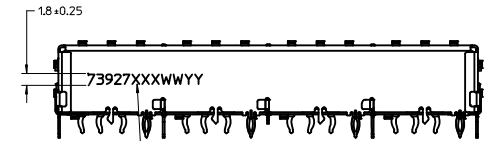
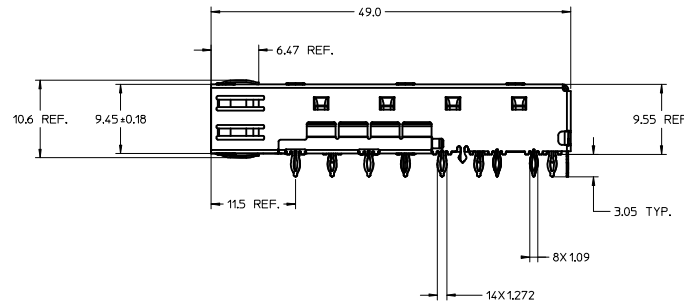
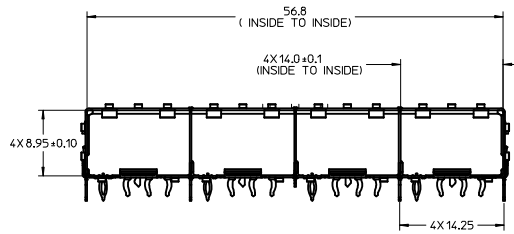


MM 3D MODEL: TM-73927-0470



DIMENSIONS OF EACH INNER CAGE DESIGNED TO FUNCTION WITH SMALL FORM-FACTOR PLUGGABLE (SFP) TRANSCEIVER



PART NO. AND WEEK/YEAR DATE CODE TO BE PRINTED ON BACK OF COMPLETED CAGE ASSEMBLY APPROXIMATELY AS SHOWN. SEE TABLE BELOW FOR DATE CODE INFORMATION.

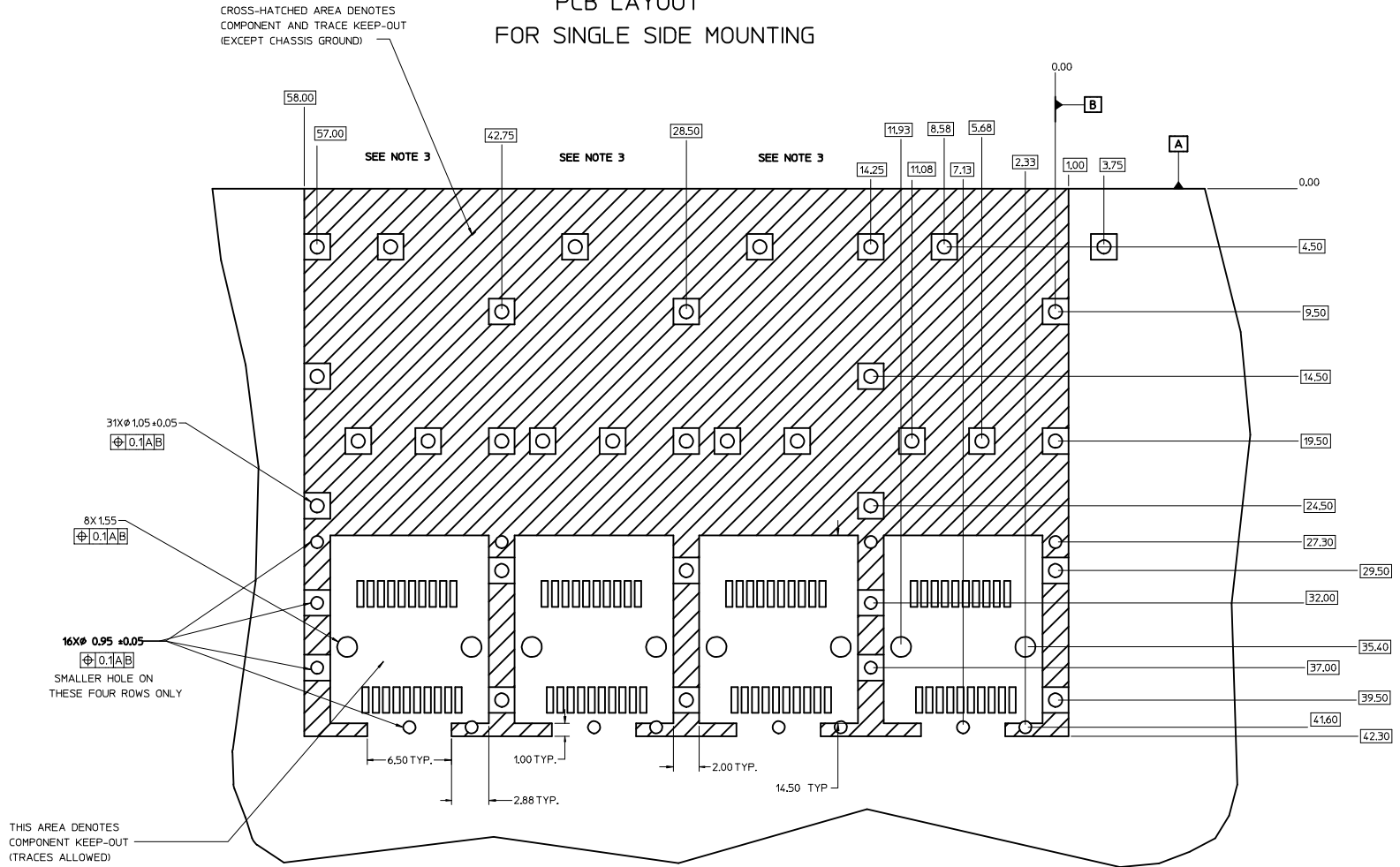
WEEK/YEAR DATE CODE TABLE	
WW	01 THRU 52 OR 53 EXAMPLE: 01 = FIRST WEEK OF YEAR 52 = LAST WEEK OF YEAR
YY	15, 16, 17 ETC. EXAMPLE: YEAR 2015 = 15

NOTES:

- PRESS FIT LEGS 3.05 MM LONG  
1.57 MM MINIMUM PCB THICKNESS FOR SINGLE SIDED USE.  
2.25 MM MINIMUM PCB THICKNESS FOR BELLY TO BELLY USE.
- MATERIAL: STAINLESS STEEL
- NO RoHS EXEMPTIONS

SEE REVISION TABLE EC NO: CPG2016-1266 DRAWN: THSU CHKD: APPROVED: RCHEN08	QUALITY SYMBOLS ▽=0 ▽=0 ▽=0	GENERAL TOLERANCES (UNLESS SPECIFIED)		DIMENSION STYLE		SCALE 3:1	DESIGN UNITS METRIC	THIRD ANGLE PROJECTION
		mm	INCH	MM ONLY	DATE			
		4 PLACES	+	---	+	---		
		3 PLACES	+	---	+	---		
		2 PLACES	±	0.13	+	---		
		1 PLACE	±	0.25	+	---		
		0 PLACE	±		+	---		
		ANGULAR ± 1 °						
		DRAFT WHERE APPLICABLE MUST REMAIN WITHIN DIMENSIONS						
		DRAWN BY: THSU		DATE: 2015/06/23		TITLE: 1X4 SFP GAGED CAGE PRESS FIT 3.05MM STAINLESS STEEL		
		CHECKED BY:		DATE:				
		APPROVED BY: RCHEN08		DATE: 2015/09/22				
		MATERIAL NO: 739270470		DOCUMENT NO: SD-73927-0470				
		SIZE: D		THIS DRAWING CONTAINS INFORMATION THAT IS PROPRIETARY TO MOLEX INCORPORATED AND SHOULD NOT BE USED WITHOUT WRITTEN PERMISSION				SHEET NO. 1 OF 5

# PCB LAYOUT FOR SINGLE SIDE MOUNTING



**NOTES:**

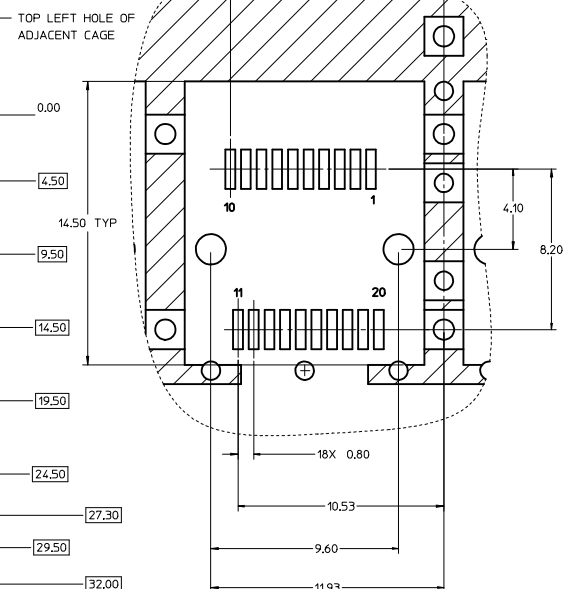
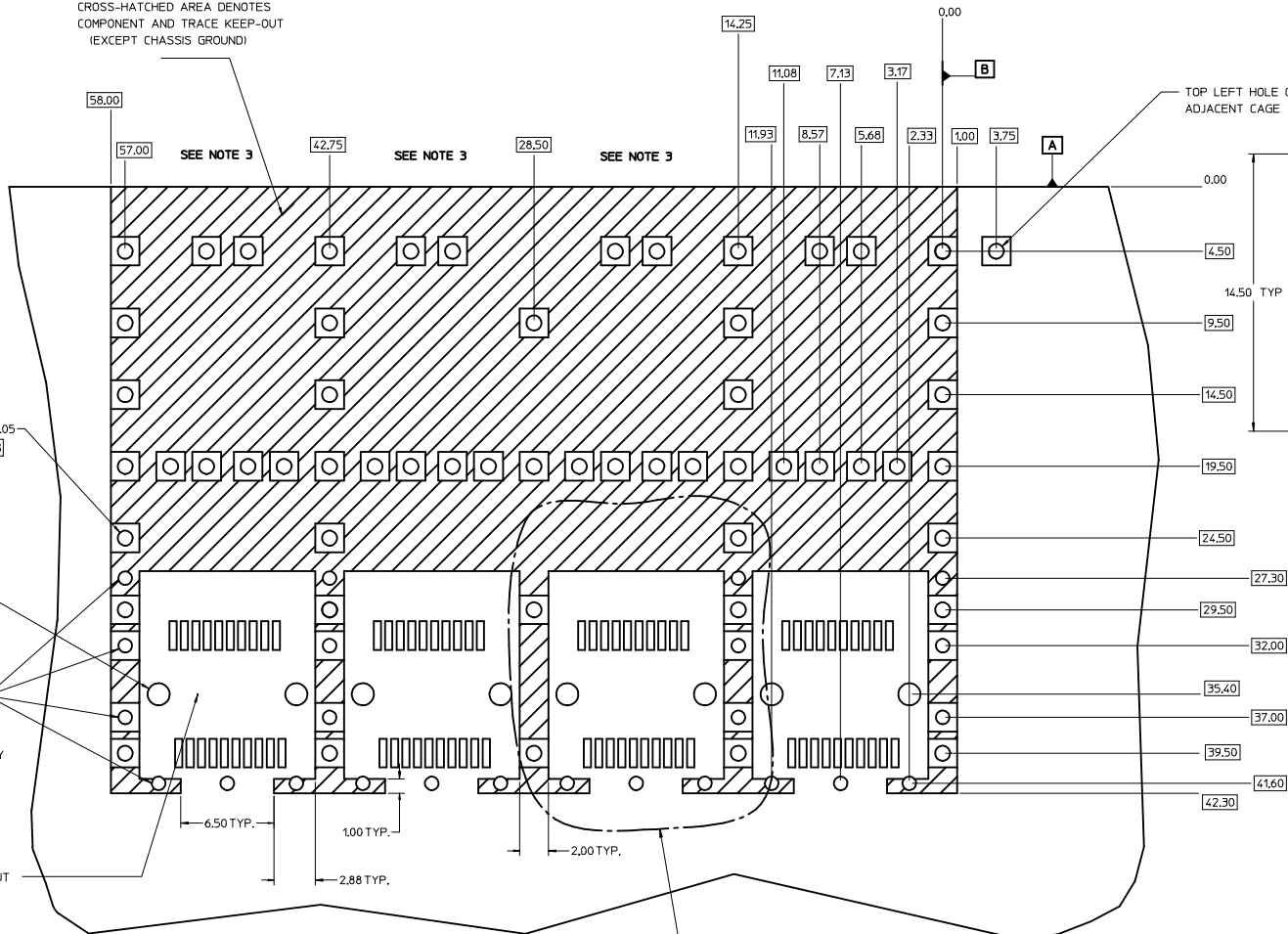
1. PADS AND VIAS GO TO CHASSIS GROUND, (34 PLACES).  
RECOMMENDED PADS TO BE 2mm SQUARE
2. PLATING OPTIONAL FOR THROUGH HOLES, (12 PLACES).
3. RECOMMENDED PLATING INCLUDES HASL, IMMERSION (GOLD, SILVER, OR TIN), AND OSP.
4. HOLE PATTERN REPEATS FOR EACH PORT,  
SPACING BETWEEN PORTS IS 14.25 MM
5. CONNECTOR PAD LAYOUT PER SFP MSA. WILL ACCOMODATE MOLEX  
CONNECTOR SERIES 74441 OR EQUIVALENT.

<b>SEE REVISION TABLE</b> EC NO: CPG2016-1266 DRAWN: THSU CHKD: APPR: RCHEN08 REV: A	QUALITY SYMBOLS ∇=0 ∇=0 ∇=0	GENERAL TOLERANCES (UNLESS SPECIFIED) <table border="1" style="width: 100%; border-collapse: collapse;"> <tr> <th></th> <th>mm</th> <th>INCH</th> </tr> <tr> <td>4 PLACES</td> <td>± 0.13</td> <td>± 0.005</td> </tr> <tr> <td>3 PLACES</td> <td>± 0.15</td> <td>± 0.006</td> </tr> <tr> <td>2 PLACES</td> <td>± 0.20</td> <td>± 0.008</td> </tr> <tr> <td>1 PLACE</td> <td>± 0.25</td> <td>± 0.010</td> </tr> <tr> <td>0 PLACE</td> <td>± 0.30</td> <td>± 0.012</td> </tr> </table> ANGULAR ± 1 ° DRAFT WHERE APPLICABLE MUST REMAIN WITHIN DIMENSIONS		mm	INCH	4 PLACES	± 0.13	± 0.005	3 PLACES	± 0.15	± 0.006	2 PLACES	± 0.20	± 0.008	1 PLACE	± 0.25	± 0.010	0 PLACE	± 0.30	± 0.012	DIMENSION STYLE <b>MM ONLY</b> DRAWN BY: THSU CHECKED BY: DATE APPROVED BY: RCHEN08 DATE: 2015/09/22	SCALE <b>6:1</b> DESIGN UNITS <b>METRIC</b>	THIRD ANGLE PROJECTION 	TITLE <b>1X4 SFP GAGED CAGE PRESS FIT 3.05MM STAINLESS STEEL</b> 	MATERIAL NO. <b>739270470</b> DOCUMENT NO. <b>SD-73927-0470</b>	SHEET NO. <b>2 OF 5</b>
		mm	INCH																							
	4 PLACES	± 0.13	± 0.005																							
	3 PLACES	± 0.15	± 0.006																							
2 PLACES	± 0.20	± 0.008																								
1 PLACE	± 0.25	± 0.010																								
0 PLACE	± 0.30	± 0.012																								
THIS DRAWING CONTAINS INFORMATION THAT IS PROPRIETARY TO MOLEX INCORPORATED AND SHOULD NOT BE USED WITHOUT WRITTEN PERMISSION																										
SIZE D																										
THIS AREA DENOTES COMPONENT KEEP-OUT (TRACES ALLOWED)																										

### PCB LAYOUT FOR BELLY TO BELLY MOUNTING

### HOST CONNECTOR DETAIL

CROSS-HATCHED AREA DENOTES  
COMPONENT AND TRACE KEEP-OUT  
(EXCEPT CHASSIS GROUND)



Detail1  
SCALE 8:1

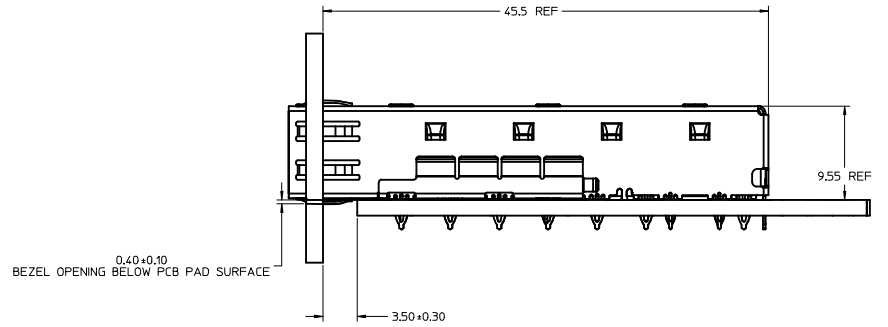
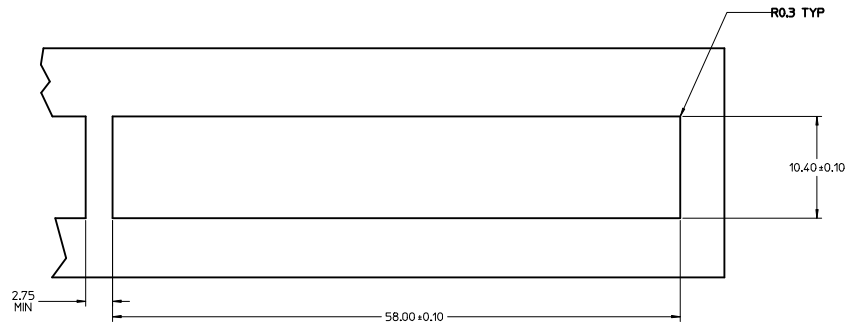
**NOTES:**

- PADS AND VIAS GO TO CHASSIS GROUND, (64 PLACES).  
RECOMMENDED PADS TO BE 2mm SQUARE
- PLATING OPTIONAL FOR THROUGH HOLES, (16 PLACES).
- RECOMMENDED PLATING INCLUDES HASL, IMMERSION (GOLD, SILVER, OR TIN), AND OSP.
- HOLE PATTERN REPEATS FOR EACH PORT.  
SPACING BETWEEN PORTS IS 14.25 MM
- CONNECTOR PAD LAYOUT PER SFP MSA. WILL ACCOMMODATE MOLEX  
CONNECTOR SERIES 74441 OR EQUIVALENT.

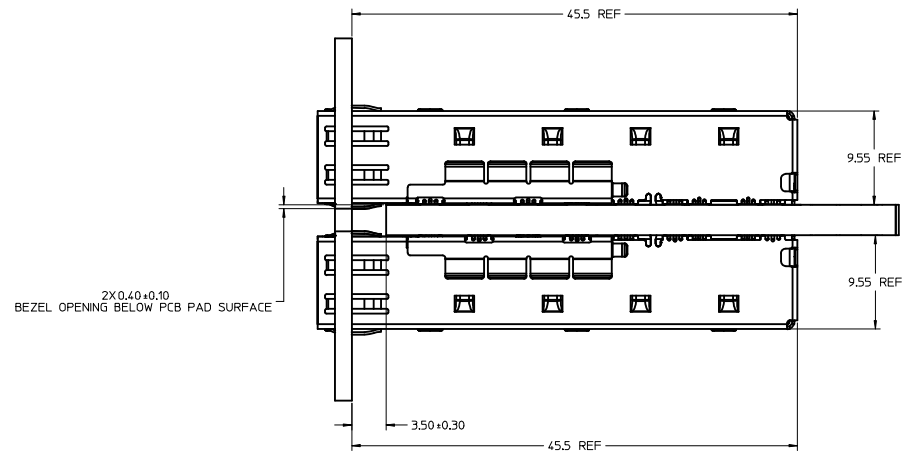
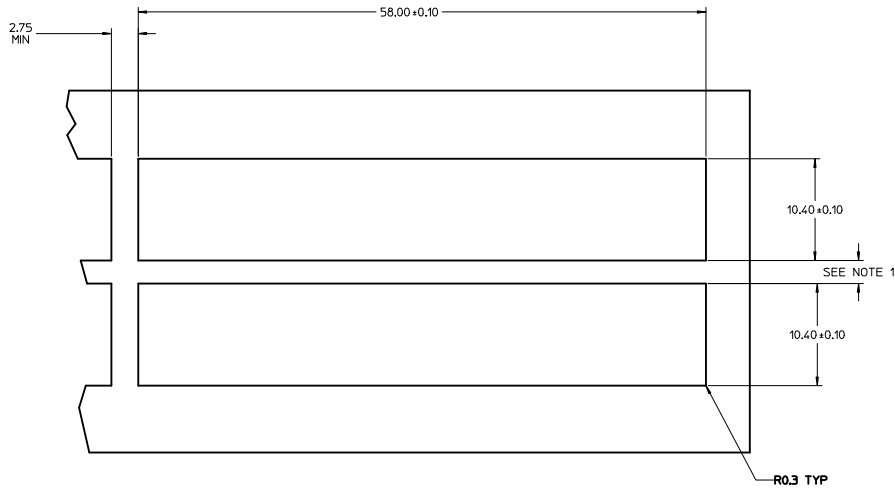
SEE Detail1

<b>SEE REVISION TABLE</b> EEC NO: CPG2016-1266 2015/06/23 DRAWN:THSU CHKO: APPROV:RCHEN08 2015/09/22	QUALITY SYMBOLS	GENERAL TOLERANCES (UNLESS SPECIFIED)	DIMENSION STYLE	SCALE	DESIGN UNITS	THIRD ANGLE PROJECTION
	▽=0	4 PLACES ± mm INCH	MM ONLY	6:1	METRIC	
	▽=0	3 PLACES ±				
	▽=0	2 PLACES ±0.13				
		ANGULAR ± 1 °				
		DRAFT WHERE APPLICABLE MUST REMAIN WITHIN DIMENSIONS				
			DRAWN BY	DATE	TITLE	
			THSU	2015/06/23	1X4 SFP GAGED CAGE	
			CHECKED BY	DATE	PRESS FIT 3.05MM	
					STAINLESS STEEL	
			APPROVED BY	DATE	molex	
			RCHEN08	2015/09/22	SD-73927-0470	
			MATERIAL NO.	DOCUMENT NO.	SHEET NO.	
			739270470	SD-73927-0470	3 OF 5	
			THIS DRAWING CONTAINS INFORMATION THAT IS PROPRIETARY TO MOLEX INCORPORATED AND SHOULD NOT BE USED WITHOUT WRITTEN PERMISSION			

BEZEL AND BOARD POSITION DIMENSIONS FOR SINGLE SIDE MOUNTING



BEZEL AND BOARD POSITION DIMENSIONS FOR BELLY TO BELLY MOUNTING



NOTE:  
1. PCB THICKNESS VARIATION MUST BE CONSIDERED WHEN BEZEL OPENING LOCATION

<b>SEE REVISION TABLE</b> IEC NO: CPG2016-1266 DRAWN: THSU CHYK: APPR: RCHEN08 DATE: 2015/06/23 DATE: 2015/09/22	QUALITY SYMBOLS	GENERAL TOLERANCES (UNLESS SPECIFIED)	DIMENSION STYLE	SCALE	DESIGN UNITS	THIRD ANGLE PROJECTION	
	▽=0	4 PLACES ± mm	MM ONLY	4:1	METRIC	☉	
	▽=0	3 PLACES ± 0.13	INCH				
	▽=0	2 PLACES ± 0.25					
		ANGULAR ± 1 °	DRAWN BY	DATE	TITLE		
		DRAFT WHERE APPLICABLE MUST REMAIN WITHIN DIMENSIONS	THSU	2015/06/23	1X4 SFP GAGED CAGE PRESS FIT 3.05MM STAINLESS STEEL		
			CHECKED BY	DATE	APPROVED BY		
			RCHEN08	2015/09/22	RCHEN08		
			MATERIAL NO.	DATE	DATE		
			739270470		2015/09/22		
			DOCUMENT NO.	SHEET NO.			
			SD-73927-0470	4 OF 5			
			THIS DRAWING CONTAINS INFORMATION THAT IS PROPRIETARY TO MOLEX INCORPORATED AND SHOULD NOT BE USED WITHOUT WRITTEN PERMISSION				

M

L

K

J

I

H

G

F

E

D

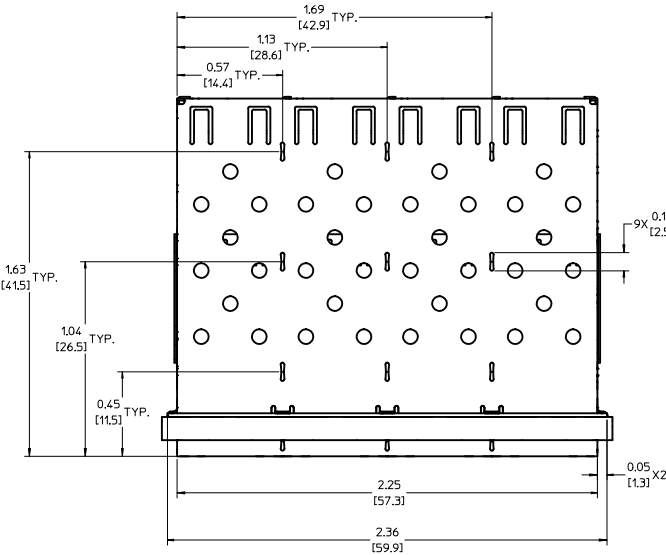
C

B

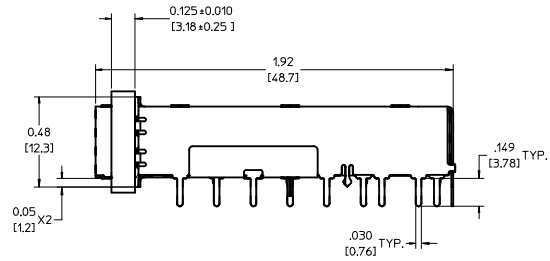
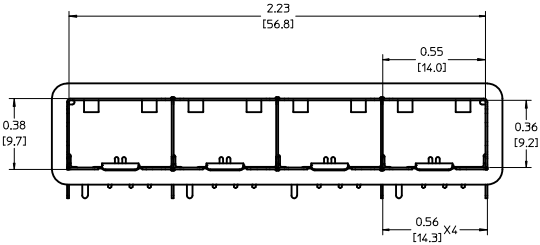
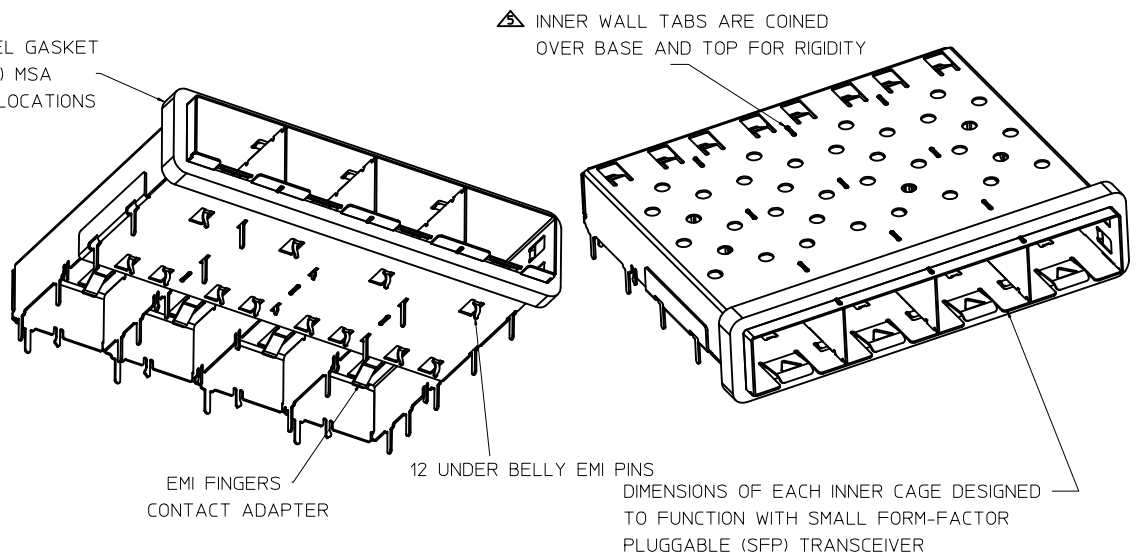
A

DATE	REV	DESCRIPTION
2015/07/28	A	INITIAL RELEASE

<p>SEE REVISION TABLE</p> <p>EC NO: CPG2016-1266 2015/06/23</p> <p>DRAWN THSU</p> <p>CHKD: CHYD</p> <p>APPR: RCHEN08</p> <p>REV DESCRIPTION 2015/09/22</p>	QUALITY SYMBOLS	GENERAL TOLERANCES (UNLESS SPECIFIED)	DIMENSION STYLE	SCALE	DESIGN UNITS	THIRD ANGLE PROJECTION
	▽=0	4 PLACES ±	mm INCH	MM ONLY	1:1	METRIC
	▽=0	3 PLACES ±				
	▽=0	2 PLACES ± 0.13				
	▽=0	1 PLACE ± 0.25				
	0 PLACE ±					
	ANGULAR ± 1 °					
DRAFT WHERE APPLICABLE MUST REMAIN WITHIN DIMENSIONS			DRAWN BY THSU DATE 2015/06/23	CHECKED BY DATE	TITLE 1X4 SFP GAGED CAGE PRESS FIT 3.05MM STAINLESS STEEL	
			APPROVED BY RCHEN08 DATE 2015/09/22	MATERIAL NO. 739270470		DOCUMENT NO. SD-73927-0470
						SHEET NO. 5 OF 5
<p><b>molex</b></p> <p>THIS DRAWING CONTAINS INFORMATION THAT IS PROPRIETARY TO MOLEX INCORPORATED AND SHOULD NOT BE USED WITHOUT WRITTEN PERMISSION</p>						



360° SOFT EMI BEZEL GASKET COMPLIES WITH (SFP) MSA BOARD AND BEZEL LOCATIONS

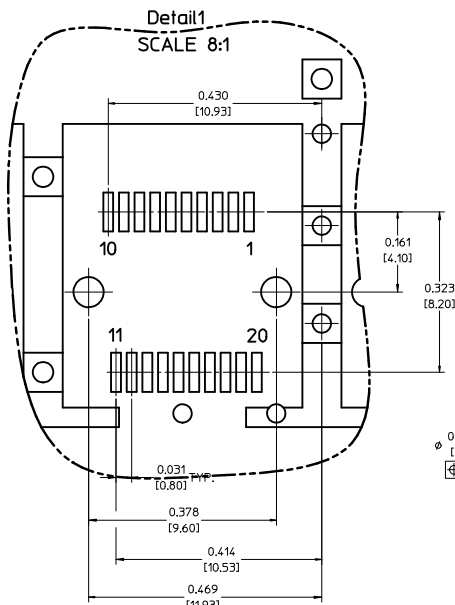


NOTES:

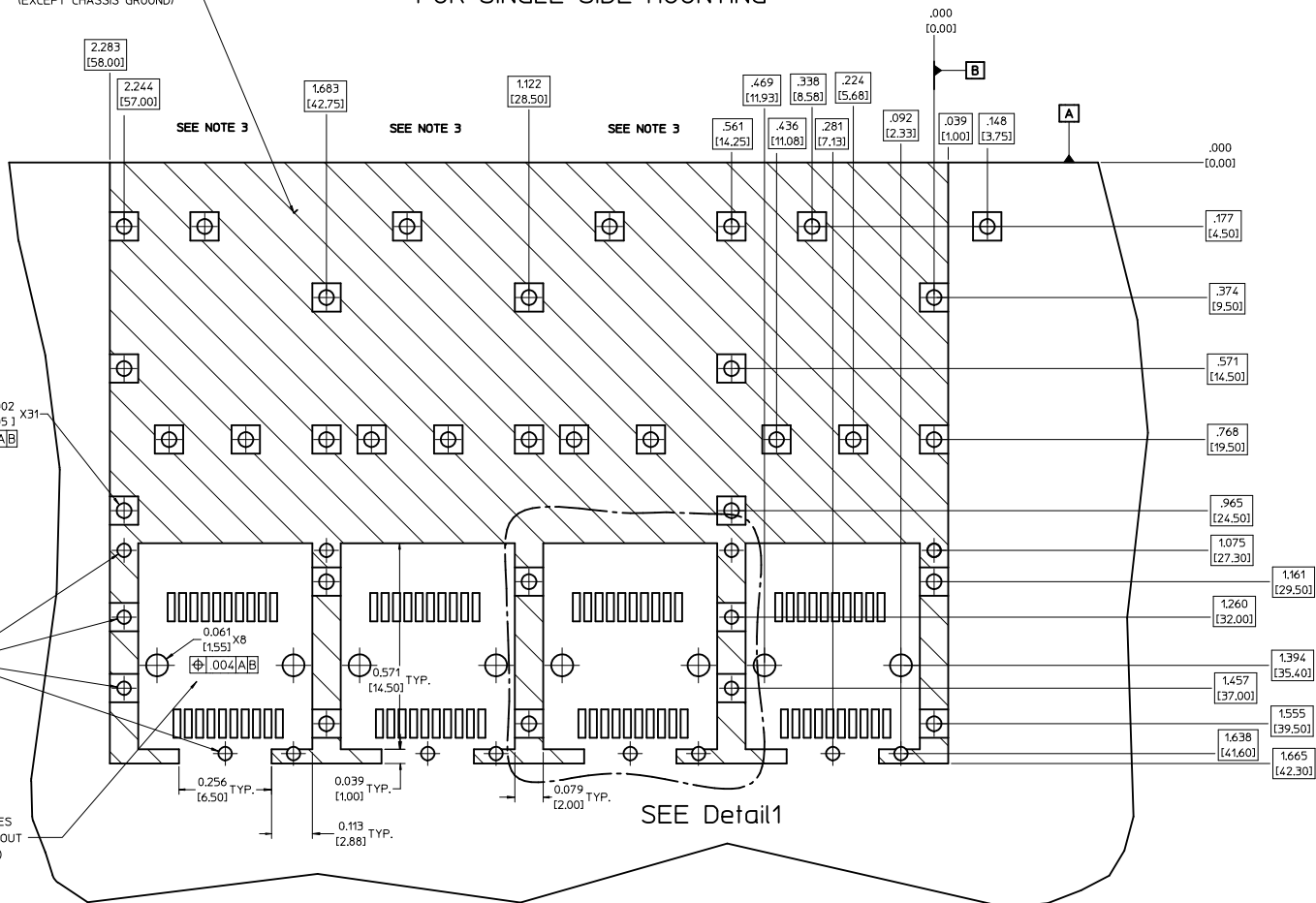
1. SOLDER POSTS 0.149" LONG.
2. MATERIAL: COPPER ALLOY  
PLATING: NONE
- NOTE: A NICKEL PLATED VERSION OF THIS ASSEMBLY IS AVAILABLE. REFER TO DOCUMENT SD-74728-421.
3. REFERENCE DOCUMENTS:  
PRODUCT SPECIFICATION: PS-74728-000  
COSMETIC SPECIFICATIONS: WI-HP-7-2774 AND WI-HPA-7-0093
4. THIS PART MEETS THE RESTRICTION OF HAZARDOUS SUBSTANCES IN ELECTRICAL AND ELECTRONIC EQUIPMENT (ROHS) DIRECTIVE (2002/95/EC).

<b>ENTER DESCRIPTION</b> IEC NO: USY2011-0270 DRAWN BY: INSKI CHKD: KJANOTA APPR: KJANOTA DATE: 2010/10/21	QUALITY SYMBOLS	GENERAL TOLERANCES (UNLESS SPECIFIED)	DIMENSION STYLE	SCALE	DESIGN UNITS	THIRD ANGLE PROJECTION															
	▼=0 ▽=0	<table border="1"> <tr> <th></th> <th>mm</th> <th>INCH</th> </tr> <tr> <td>4 PLACES</td> <td>±---</td> <td>±---</td> </tr> <tr> <td>3 PLACES</td> <td>±---</td> <td>±.005</td> </tr> <tr> <td>2 PLACES</td> <td>±0.13</td> <td>±.01</td> </tr> <tr> <td>1 PLACE</td> <td>±0.25</td> <td>±---</td> </tr> </table> ANGULAR ± 1°		mm	INCH	4 PLACES	±---	±---	3 PLACES	±---	±.005	2 PLACES	±0.13	±.01	1 PLACE	±0.25	±---	IN/MM 3:1 METRIC	DRAWN BY: KLOYD DATE: 2003/03/05 CHECKED BY: MI SKIN DATE: 2003/03/05 APPROVED BY: KJANOTA DATE: 2010/10/21	TITLE: 1X4 SFP GANGED CAGE ASSEMBLY, SOLDER POSTS	Molex MOLEX INCORPORATED
		mm	INCH																		
	4 PLACES	±---	±---																		
3 PLACES	±---	±.005																			
2 PLACES	±0.13	±.01																			
1 PLACE	±0.25	±---																			
DRAFT WHERE APPLICABLE MUST REMAIN WITHIN DIMENSIONS	MATERIAL NO: 739270402 DOCUMENT NO: SD-73927-402	SHEET NO: 1 OF 4																			
SIZE D	THIS DRAWING CONTAINS INFORMATION THAT IS PROPRIETARY TO MOLEX INCORPORATED AND SHOULD NOT BE USED WITHOUT WRITTEN PERMISSION																				

# PCB LAYOUT FOR SINGLE SIDE MOUNTING



CROSS-HATCHED AREA DENOTES  
COMPONENT AND TRACE KEEP-OUT  
(EXCEPT CHASSIS GROUND)

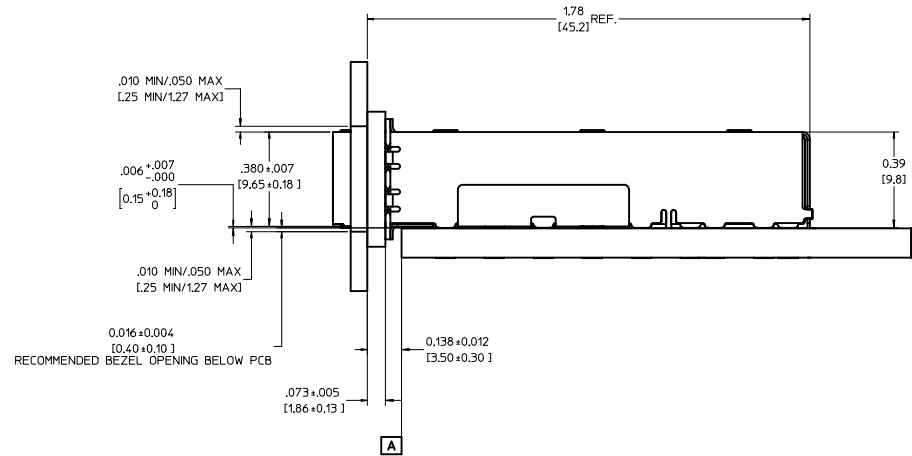
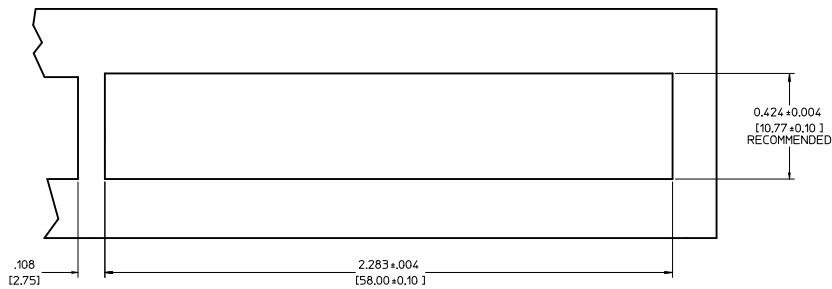


## NOTES:

- PADS AND VIAS GO TO CHASSIS GROUND. (34 PLACES).  
RECOMMENDED PADS TO BE 2mm SQUARE.
- PLATING OPTIONAL FOR THROUGH HOLES. (12 PLACES).
- RECOMMENDED PLATING INCLUDES HASL, IMMERSION (GOLD, SILVER, OR TIN), AND OSP.
- HOLE PATTERN REPEATS FOR EACH PORT,  
SPACING BETWEEN PORTS IS 14.25mm.
- CONNECTOR PAD LAYOUT PER SFP MSA. WILL ACCOMODATE MOLEX  
CONNECTOR SERIES 74441 OR EQUIVALENT.

<b>ENTER DESCRIPTION</b> EC NO: USJ2011-0270 DRAWN/CHKD: INSK/ 2010/10/19 CHYK: APPROX: ANJOTA 2010/10/21	QUALITY SYMBOLS ▽=0 ▽=0	GENERAL TOLERANCES (UNLESS SPECIFIED) mm INCH 4 PLACES ±--- ±--- 3 PLACES ±--- ±.005 2 PLACES ±0.13 ±.01 1 PLACE ±0.25 ±--- ANGULAR ± 1°	DIMENSION STYLE IN/MM SCALE 6:1 DESIGN UNITS METRIC	DRAWN BY KLLOYD DATE 2003/03/05 CHECKED BY DATE 2003/03/05 APPROVED BY DATE 2010/10/21	TITLE 1X4 SFP GANGED CAGE ASSEMBLY, SOLDER POSTS MOLEX INCORPORATED
	DRAFT WHERE APPLICABLE MUST REMAIN WITHIN DIMENSIONS	MATERIAL NO. 739270402 DOCUMENT NO. SD-73927-402 SHEET NO. 2 OF 4	THIS DRAWING CONTAINS INFORMATION THAT IS PROPRIETARY TO MOLEX INCORPORATED AND SHOULD NOT BE USED WITHOUT WRITTEN PERMISSION		

BEZEL AND BOARD POSITION DIMENSIONS FOR SINGLE SIDE MOUNTING



<b>ENTER DESCRIPTION</b> EC NO: USY2011-0270 DRAWN BY: KJANOTA 2010/10/21 CHKD: MIMSKIN APPR: KJANOTA 2010/10/21 REV DESCRIPTION	QUALITY SYMBOLS	GENERAL TOLERANCES (UNLESS SPECIFIED)	DIMENSION STYLE	SCALE	DESIGN UNITS	THIRD ANGLE PROJECTION	
	=0 =0	mm INCH 4 PLACES ± --- ± --- 3 PLACES ± --- ± .005 2 PLACES ± 0.13 ± .01 1 PLACE ± 0.25 ± --- ANGULAR ± 1°	IN/MM	4:1	METRIC	DRAWN BY DATE K LLOYD 2003/03/05 CHECKED BY DATE MIMSKIN 2003/03/05 APPROVED BY DATE KJANOTA 2010/10/21	
	DRAFT WHERE APPLICABLE MUST REMAIN WITHIN DIMENSIONS		MATERIAL NO.	DOCUMENT NO.		TITLE	
			739270402	SD-73927-402		1X4 SFP GANGED CAGE ASSEMBLY, SOLDER POSTS MOLEX INCORPORATED SHEET NO. 3 OF 4	

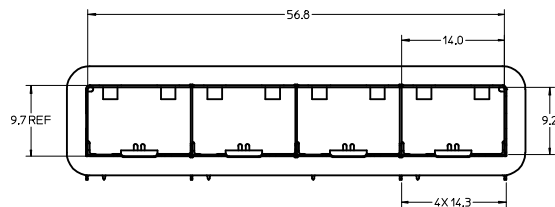
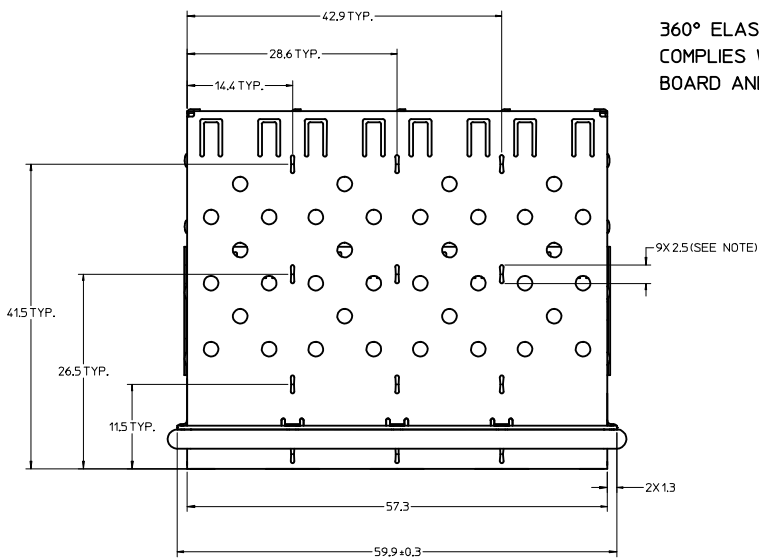


20 19 18 17 16 15 14 13 12 11 10 9 8 7 6 5 4 3 2 1

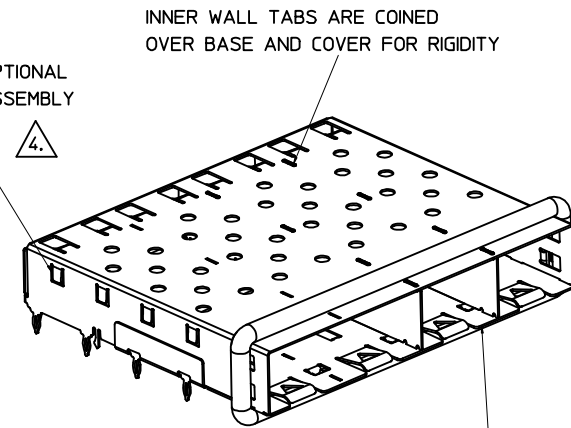
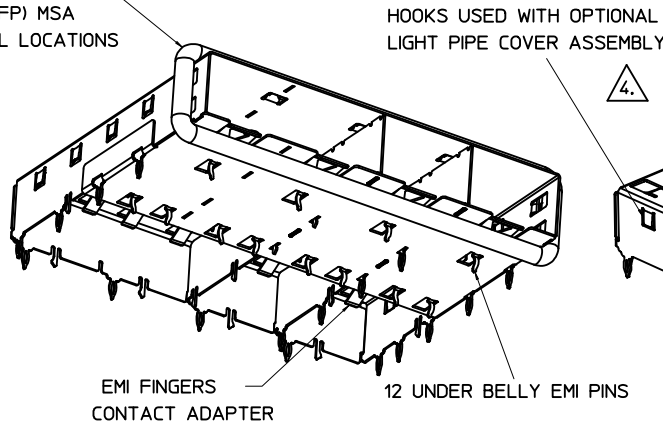
DATE MONTH/DAY/YEAR	REV	CHANGES	COMMENTS
9/12/02	A	INITIAL RELEASE	N/A
5/20/03	B	MOVED PCB LAYOUT AND BEZEL DETAILS TO DOCUMENT SD-73927-400	N/A
3/25/04	C	UPDATED VIEWS FOR COVER MODIFICATIONS	N/A
10/12/04	D	UPDATED VIEWS	DOCUMENT CHANGE ONLY
10/07/05	E	ADD PCB AND BEZEL LAYOUT. UPDATED NOTES.	DOCUMENT CHANGE ONLY
10/19/10	F	COINED INNER WALL TAB LENGTH FROM 0.10 INCH [2.5 MM] +/- .01 INCH [ 0.25 MM] TO MAXIMUM	DOCUMENT CHANGE ONLY

<b>ENTER DESCRIPTION</b> IEC NO: USY2011-0270 TDRWNRMIKLSKI 2010/10/19 CHKD: APPR:KJANOTA 2010/10/21 REV DESCRIPTION	QUALITY SYMBOLS ▽=0 ▽=0	GENERAL TOLERANCES (UNLESS SPECIFIED) <table border="1"> <thead> <tr> <th></th> <th>mm</th> <th>INCH</th> </tr> </thead> <tbody> <tr> <td>4 PLACES</td> <td>±.005</td> <td>±.0005</td> </tr> <tr> <td>3 PLACES</td> <td>±.01</td> <td>±.001</td> </tr> <tr> <td>2 PLACES</td> <td>±0.13</td> <td>±.01</td> </tr> <tr> <td>1 PLACE</td> <td>±0.25</td> <td>±.01</td> </tr> </tbody> </table> ANGULAR ± 1°		mm	INCH	4 PLACES	±.005	±.0005	3 PLACES	±.01	±.001	2 PLACES	±0.13	±.01	1 PLACE	±0.25	±.01	DIMENSION STYLE IN/MM DRAWN BY DATE K LLOYD 2003/03/05 CHECKED BY DATE M M SKIN 2003/03/05 APPROVED BY DATE K JANOTA 2010/10/21	SCALE 1:1 DESIGN UNITS METRIC THIRD ANGLE PROJECTION	TITLE 1X4 SFP GANGED CAGE ASSEMBLY, SOLDER POSTS
		mm	INCH																	
4 PLACES	±.005	±.0005																		
3 PLACES	±.01	±.001																		
2 PLACES	±0.13	±.01																		
1 PLACE	±0.25	±.01																		
MATERIAL NO. 739270402 SIZE D	DOCUMENT NO. SD-73927-402	SHEET NO. 4 OF 4																		

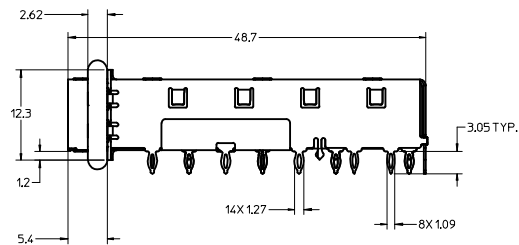
19 18 17 16 15 14 13 12 11 10 9 8 7 6 5 4 3 2 1



360° ELASTOMER GASKET COMPLIES WITH (SFP) MSA BOARD AND BEZEL LOCATIONS



DIMENSIONS OF EACH INNER CAGE DESIGNED TO FUNCTION WITH SMALL FORM-FACTOR PLUGGABLE (SFP) TRANSCEIVER



PART NUMBER	ELASTOMERIC GASKET FLAMMABILITY RATING
747280415	
747280424	EQUATE TO UL94 V-0

NOTES:

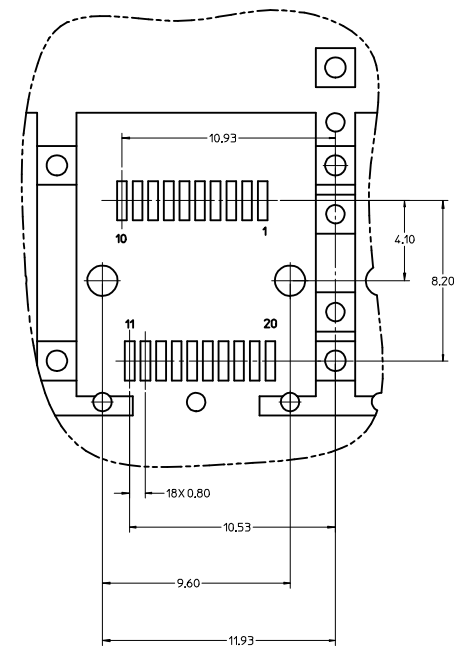
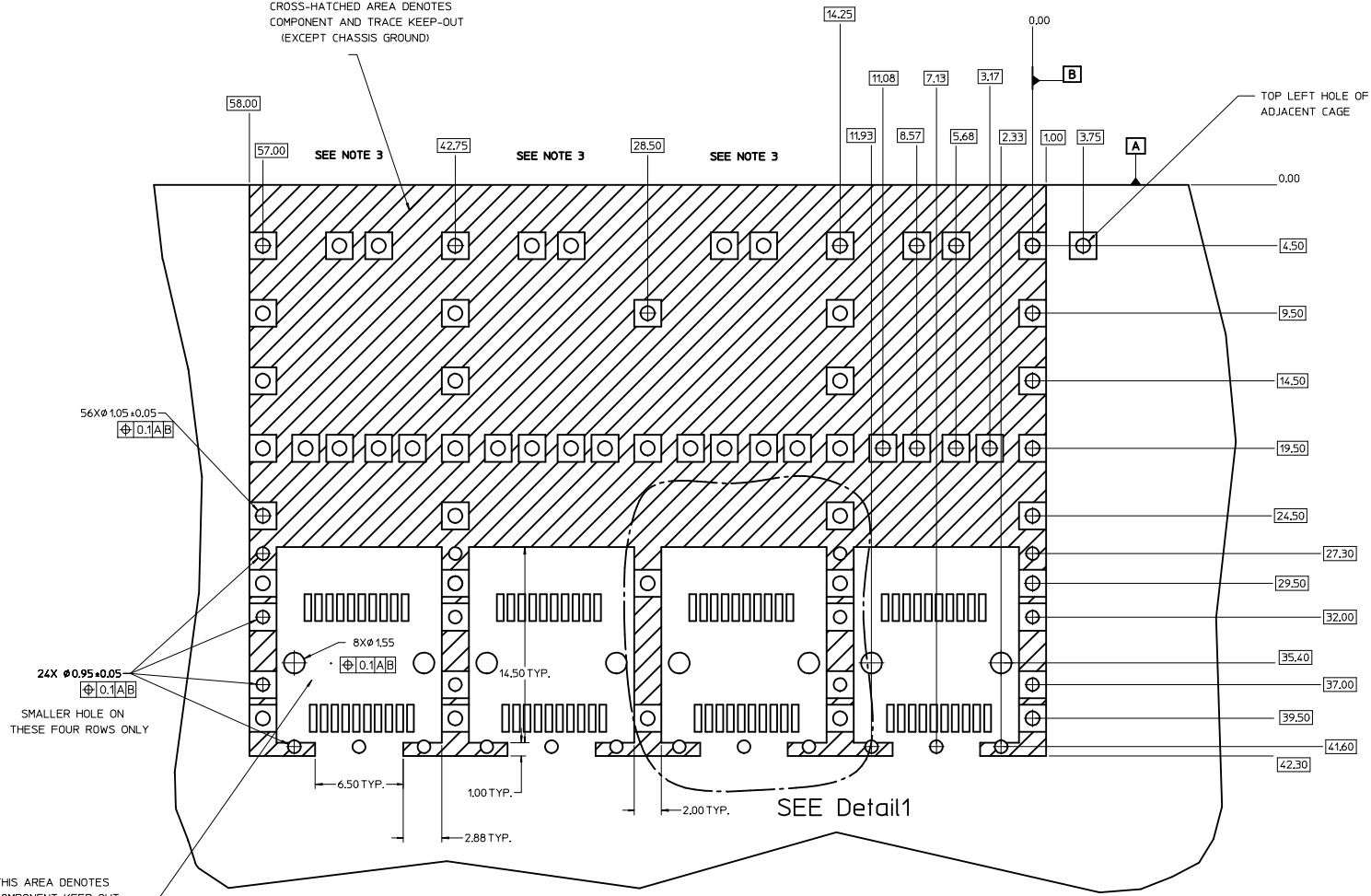
- PRESS FIT LEGS 3.05 LONG-  
1.57 MINIMUM PCB THICKNESS FOR SINGLE SIDED USE.  
3.00 MINIMUM PCB THICKNESS FOR BELLY TO BELLY USE.
  - MATERIAL: COPPER ALLOY  
PLATING: NONE.  
NOTE: A PRE-PLATED NICKEL VERSION IS AVAILABLE.  
REFER TO DOCUMENT SD-74728-420.
  - REFERENCE DOCUMENTS:  
PRODUCT SPECIFICATION: PS-74728-000.  
COSMETIC SPECIFICATIONS: WI-HP-7-2774 AND WI-HPA-7-0093.  
TEST SUMMARY: TS-74728-0415.
- ▲ MATES WITH SERIES 74728, LIGHT PIPE COVER ASSEMBLY.
5. NO ROHS EXEMPTIONS.

<b>SEE REVISION TABLE</b> EC NO: CPG2014-3390 DRAWN LIZO 2014/05/09 CHYKORCHENOS 2014/05/09 APPR RCHENOS 2014/06/30 REV DESCRIPTION	QUALITY SYMBOLS	GENERAL TOLERANCES (UNLESS SPECIFIED)	DIMENSION STYLE	SCALE	DESIGN UNITS	THIRD ANGLE PROJECTION
	▽=0	mm INCH	MM ONLY	3:1	METRIC	
	▽=0	4 PLACES ± ---	DRAWN BY DATE			TITLE 1X4 SFP GANGED CAGE ASSY, W/ 0.103 GASKET PRESS FIT, F/ LIGHT PIPE
	▽=0	2 PLACES ± 0.13	CHECKED BY DATE			
	1 PLACE ± 0.25	APPROVED BY DATE				MATERIAL NO. DOCUMENT NO. SEE P/N TABLE SD-74728-415
	0 PLACE ±					
	ANGULAR ± 1 °	DRAFT WHERE APPLICABLE MUST REMAIN WITHIN DIMENSIONS	SIZE			SHEET NO. 1 OF 5
			THIS DRAWING CONTAINS INFORMATION THAT IS PROPRIETARY TO MOLEX INCORPORATED AND SHOULD NOT BE USED WITHOUT WRITTEN PERMISSION			

# PCB LAYOUT FOR BELLY TO BELLY MOUNTING

CROSS-HATCHED AREA DENOTES  
COMPONENT AND TRACE KEEP-OUT  
(EXCEPT CHASSIS GROUND)

## HOST CONNECTOR DETAIL



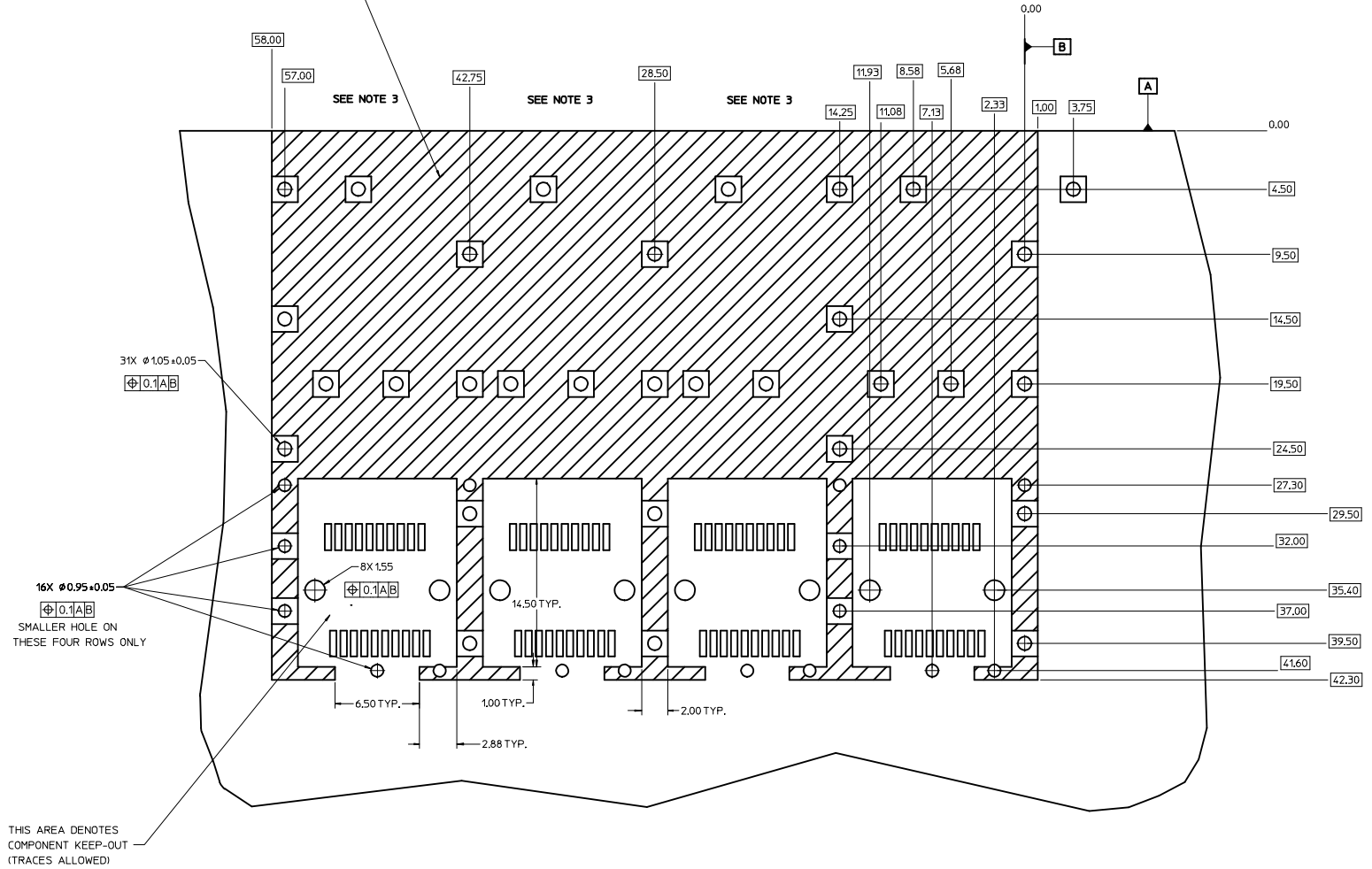
Detail1  
SCALE 8:1

- NOTES:**
1. PADS AND VIAS GO TO CHASSIS GROUND, (64 PLACES). RECOMMENDED PADS TO BE 2mm SQUARE
  2. PLATING OPTIONAL FOR THROUGH HOLES, (16 PLACES).
  3. RECOMMENDED PLATING INCLUDES HASL, IMMERSION (GOLD, SILVER, OR TIN), AND OSP.
  4. HOLE PATTERN REPEATS FOR EACH PORT, SPACING BETWEEN PORTS IS 14.25

REV		DESCRIPTION	QUALITY SYMBOLS	GENERAL TOLERANCES (UNLESS SPECIFIED)	DIMENSION STYLE	SCALE	DESIGN UNITS	THIRD ANGLE PROJECTION
SEE REVISION TABLE					MM ONLY	6:1	METRIC	
EC NO: CPG2014-3390	2014/05/09	DRWNLUZO	▽=0	4 PLACES ±---	INCH			
CHKORCHEN08	2014/05/09	2014/05/09	▽=0	3 PLACES ±---				
APPRORCHEN08	2014/06/30	2014/06/30	▽=0	2 PLACES ±0.13				
				1 PLACE ±0.25				
				0 PLACE ±				
				ANGULAR ± 1 °	DRAWN BY DATE		TITLE	
				DRAFT WHERE APPLICABLE MUST REMAIN WITHIN DIMENSIONS	KSI MONSO 2004/10/09		1X4 SFP GANGED CAGE ASSY, W/ 0.103 GASKET PRESS FIT, F/ LIGHT PIPE	
					BRUSSELL 2004/10/09		molex	
					BRUSSELL 2004/10/09		SD-74728-415	
					MATERIAL NO. SEE P/N TABLE		DOCUMENT NO.	
					SIZE D		SHEET NO. 2 OF 5	
					THIS DRAWING CONTAINS INFORMATION THAT IS PROPRIETARY TO MOLEX INCORPORATED AND SHOULD NOT BE USED WITHOUT WRITTEN PERMISSION			

# PCB LAYOUT FOR SINGLE SIDE MOUNTING

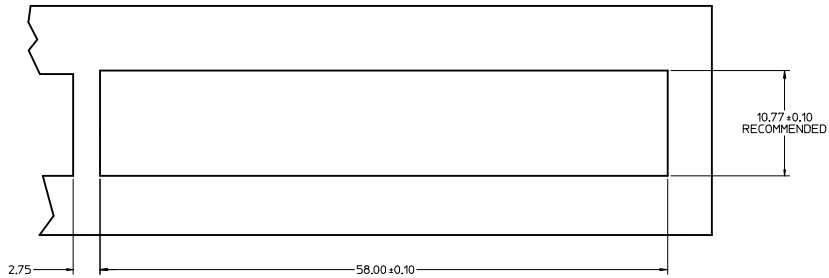
CROSS-HATCHED AREA DENOTES  
COMPONENT AND TRACE KEEP-OUT  
(EXCEPT CHASSIS GROUND)



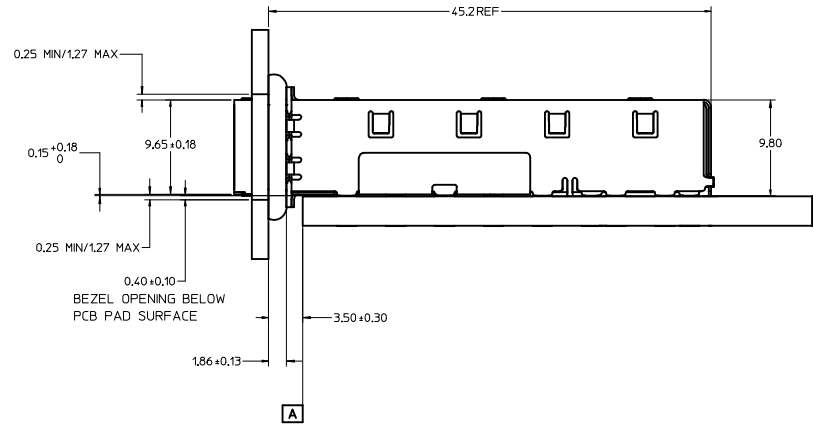
**NOTES:**

1. PADS AND VIAS GO TO CHASSIS GROUND, (34 PLACES). RECOMMENDED PADS TO BE 2mm SQUARE
2. PLATING OPTIONAL FOR THROUGH HOLES, (12 PLACES).
3. RECOMMENDED PLATING INCLUDES HASL, IMMERSION (GOLD, SILVER, OR TIN), AND OSP.
4. HOLE PATTERN REPEATS FOR EACH PORT, SPACING BETWEEN PORTS IS 14.25

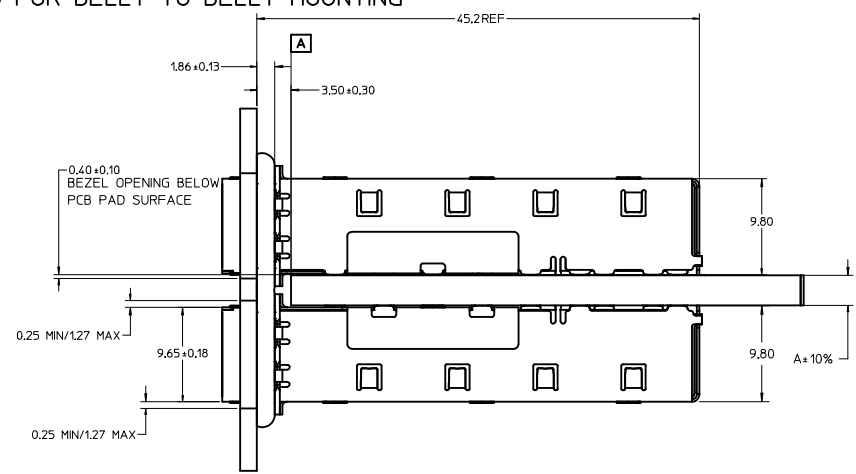
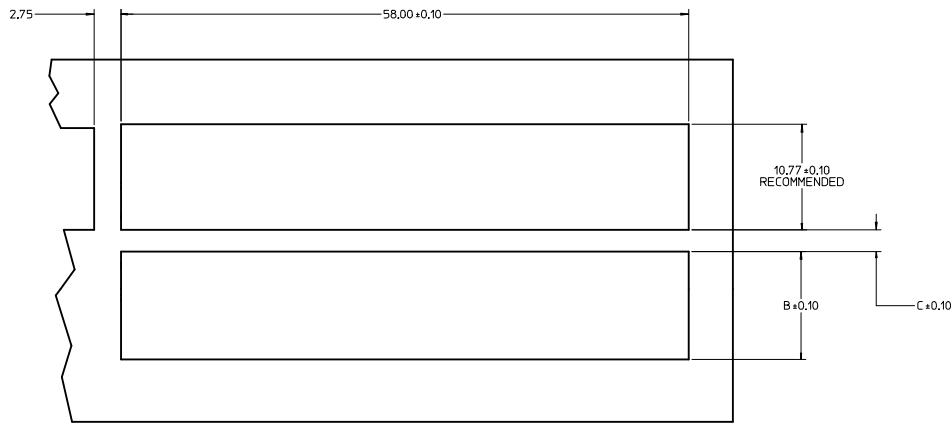
<b>SEE REVISION TABLE</b> EC NO: CPG2014-3390 DRAWN: LUZO 2014/05/09 CHECKED: CHYKORHEN08 2014/05/09 APPROVED: CHYKORHEN08 2014/06/30	QUALITY SYMBOLS	GENERAL TOLERANCES (UNLESS SPECIFIED)	DIMENSION STYLE	SCALE	DESIGN UNITS	THIRD ANGLE PROJECTION
	▽=0	mm    INCH	MM ONLY	6:1	METRIC	☉
	▽=0	4 PLACES ± ---	DRAWN BY: KSI (MONSO) 2004/10/09	TITLE: 1X4 SFP GANGED CAGE ASSY, W/ 0.103 GASKET PRESS FIT, F/ LIGHT PIPE		
	▽=0	3 PLACES ± ---	CHECKED BY: BRUSSELL 2004/10/09			
	ANGULAR ± 1 °	DRAFT WHERE APPLICABLE MUST REMAIN WITHIN DIMENSIONS	MATERIAL NO.	DOCUMENT NO.	SHEET NO.	
			SEE P/N TABLE	SD-74728-415	3 OF 5	
			THIS DRAWING CONTAINS INFORMATION THAT IS PROPRIETARY TO MOLEX INCORPORATED AND SHOULD NOT BE USED WITHOUT WRITTEN PERMISSION			



BEZEL AND BOARD POSITION DIMENSIONS FOR SINGLE SIDE MOUNTING



BEZEL AND BOARD POSITION DIMENSIONS FOR BELLY TO BELLY MOUNTING



NOTE:

- 1.FOR A GIVEN BOARD THICKNESS (A), DIMENSIONS (B) AND (C) ARE DIRECTLY AFFECTED.
- 2.USE RECOMMENDED DIMENSIONS AND TOLERANCES TO AID IN DEVELOPING BEZEL OPENING.
- 3.FOR EXAMPLE USING A BOARD THICKNESS OF 3.175 THE RECOMMENDED VALUES WOULD BE:

A= 3.18  
 B= 11.03  
 C= 2.23

SEE REVISION TABLE EEC NO: CPG2014-3390 DRAWN BY: CHYKORCHEN08 CHECKED BY: CHYKORCHEN08 APPROVED BY: CHYKORCHEN08 DATE: 2014/05/09 DATE: 2014/06/30 DATE: 2014/06/30	QUALITY SYMBOLS	GENERAL TOLERANCES (UNLESS SPECIFIED)	DIMENSION STYLE	SCALE	DESIGN UNITS	THIRD ANGLE PROJECTION
	▽=0	4 PLACES ± mm ± INCH	MM ONLY	4:1	METRIC	☉
	▽=0	3 PLACES ± mm ± INCH				
	▽=0	2 PLACES ± 0.13 ± mm ± INCH				
	ANGULAR ± 1 °	DRAFT WHERE APPLICABLE MUST REMAIN WITHIN DIMENSIONS	MATERIAL NO.	DOCUMENT NO.	TITLE	
			SEE P/N TABLE	SD-74728-415	1X4 SFP GANGED CAGE ASSY, W/ 0.103 GASKET PRESS FIT, F/ LIGHT PIPE	
			THIS DRAWING CONTAINS INFORMATION THAT IS PROPRIETARY TO MOLEX INCORPORATED AND SHOULD NOT BE USED WITHOUT WRITTEN PERMISSION		molex	
			SIZE D		SHEET NO. 4 OF 5	

REVISION HISTORY

DATE	REV	DESCRIPTION
08/17/2004	1	PRELIMINARY DOCUMENT.
10/09/2004	A	INITIAL RELEASE.
01/20/2006	B	ADDED PCB AND BEZEL LAYOUT. UPDATED NOTES.
05/09/2014	C	1. ADDED P/N 747280424. [SHT 1] 2. ADDED "MM 3D MODEL: EM-74728-0415" ON LEFT TOP CORNER. [SHT 1] 3. NOTE 5 CHANGED AS "NO RoHS EXEMPTIONS". [SHT 1] 4. REMOVE ALL DIMENSIONS IN INCH. [SHT 1 TO 4]

SEE REVISION TABLE EC NO: CPG2014-3390 DRAWN BY: DRANKLUZ0 CHECKED BY: CHYKORCHEN08 APPR: RCHEN08	2014/05/09 2014/05/09 2014/06/30	QUALITY SYMBOLS ∇=0 ∇=0 ∇=0	GENERAL TOLERANCES (UNLESS SPECIFIED) mm      INCH 4 PLACES ± --- ± --- 3 PLACES ± --- ± --- 2 PLACES ± 0.13 ± --- 1 PLACE ± 0.25 ± --- 0 PLACE ± ±	DIMENSION STYLE MM ONLY	SCALE DRAWN BY: DATE KSIMONSO 2004/10/09	DESIGN UNITS METRIC	THIRD ANGLE PROJECTION ☉	
					TITLE 1X4 SFP GANGED CAGE ASSY, W/ 0.103 GASKET PRESS FIT, F/ LIGHT PIPE			
					APPROVED BY: DATE BRUSSELL 2004/10/09			
					MATERIAL NO.      DOCUMENT NO. SEE P/N TABLE      SD-74728-415			
				ANGULAR ± 1 ° DRAFT WHERE APPLICABLE MUST REMAIN WITHIN DIMENSIONS		SHEET NO. 5 OF 5		



THIS DRAWING CONTAINS INFORMATION THAT IS PROPRIETARY TO MOLEX INCORPORATED AND SHOULD NOT BE USED WITHOUT WRITTEN PERMISSION