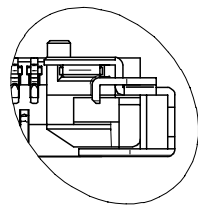
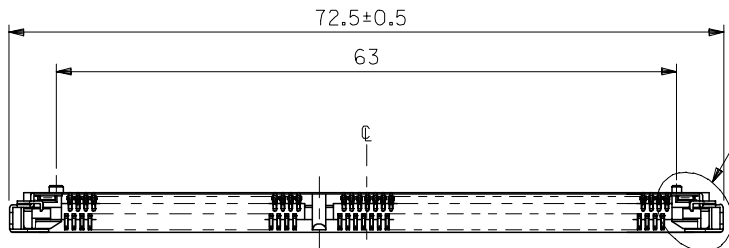


10 9 8 7 6 5 4 3 2 1

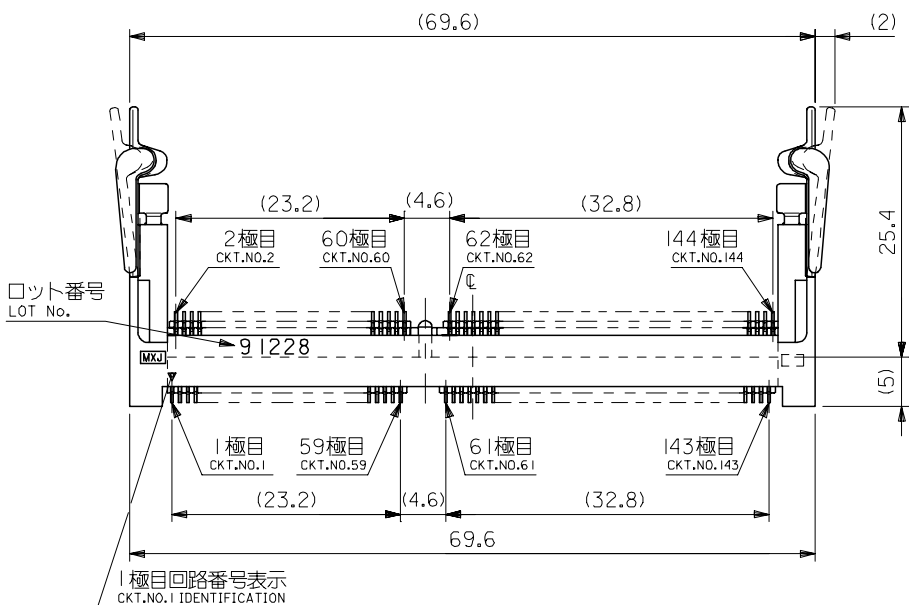
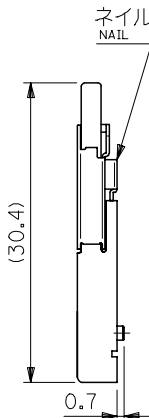


詳細 D
DETAIL D
SCALE 5:1

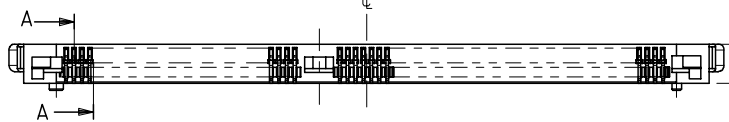
注記 NOTES
1. 材料 MATERIAL
ハウジング : ガラス入り耐熱樹脂、白色、UL94V-0
ターミナル : 燐青銅
TERMINAL : PHOSPHOR BRONZE
ネイル : 黄銅
NAIL : BRASS

2. めっき仕様 PLATING
ロングターミナル LONG TERMINAL
接点部 : 金めっき 0.25μmMIN.
CONTACT AREA : GOLD 0.25 MICROMETER MIN.
半田付け部 : 錫めっき 1.0μmMIN.
SOLDER TAIL AREA : TIN 1.0 MICROMETER MIN.
下地めっき : ニッケルめっき 2.0μmMIN.
UNDER-PLATING : NICKEL 2.0 MICROMETER MIN.
ショートターミナル SHORT TERMINAL
接点部 : 金めっき 0.25μmMIN.
CONTACT AREA : GOLD 0.25 MICROMETER MIN.
半田付け部 : 錫めっき 1.0μmMIN.
SOLDER TAIL AREA : TIN 1.0 MICROMETER MIN.
下地めっき : ニッケルめっき 2.0μmMIN.
UNDER-PLATING : NICKEL 2.0 MICROMETER MIN.
ネイル NAIL
錫めっき : 1.0μmMIN.
TIN : 1.0 MICROMETER MIN.
下地めっき : ニッケルめっき 1.0μmMIN.
UNDER-PLATING : NICKEL 1.0 MICROMETER MIN.

3. テール平坦度は、0.1 MAX. とする。
TAIL COPLANARITY TO BE 0.1 MAX.
ネイル平坦度は、0.1 MAX. とする。
NAIL COPLANARITY TO BE 0.1 MAX.
4. 本製品は 54697-144* の鉛フリー品である。
THIS PRODUCT IS LEAD FREE OF 54697-144*.



1.75	2.85	1.35	3.25	4.05	***V	ハードトレイ (高さ9) HARD TRAY(HIGHT 9)	54697-7008		
						ハードトレイ (高さ11) HARD TRAY(HIGHT 11)	54697-7005		
						標準トレイ NORMAL TRAY	54697-7002		
3.25	1.35	2.85	1.75	5.55	5.0V	ハードトレイ (高さ9) HARD TRAY(HIGHT 9)	54697-7007	54697-700*	144
						ハードトレイ (高さ11) HARD TRAY(HIGHT 11)	54697-7004		
						標準トレイ NORMAL TRAY	54697-7001		
						ハードトレイ (高さ9) HARD TRAY(HIGHT 9)	54697-7006		
2.5	2.1	2.1	2.5	4.8	3.3V	ハードトレイ (高さ11) HARD TRAY(HIGHT 11)	54697-7003		
						標準トレイ NORMAL TRAY	54697-7000		
E	D	C	B	A	POWER SUPPLY	梱包トレイ PACKAGING TRAY	MATERIAL NO.	MODEL NO.	CKT.



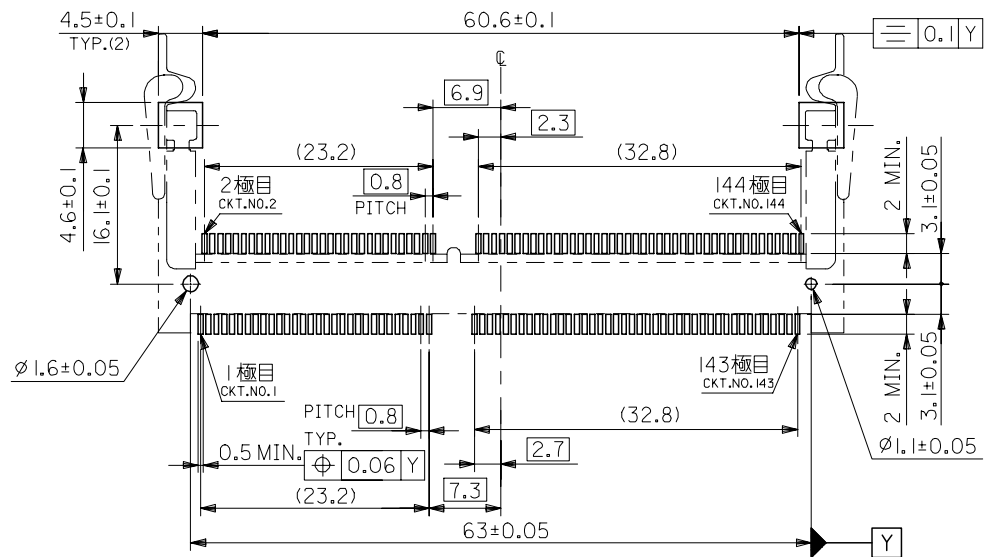
MATERIAL 材料
注記参照
SEE NOTES
FINISH 仕上げ
注記参照
SEE NOTES

REVISED
EC NO: J2007-0519
DRW:KSAIT001 2006/08/25
CHK:D:THARUYAMA 2006/08/25
APPR:NUKITA 2006/09/04
DESCRIPTION
REV A

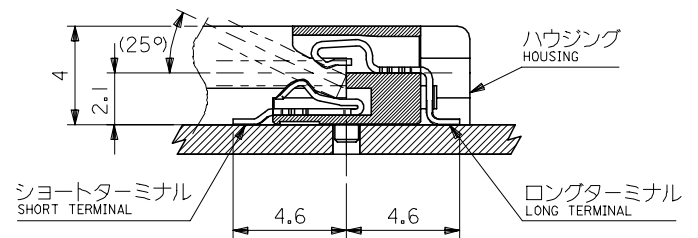
GENERAL TOLERANCES (UNLESS SPECIFIED)
10 UNDER ±0.2
10 OVER 30 UNDER ±0.25
30 OVER ±0.3
ANGULAR ±3 °
DRAFT WHERE APPLICABLE
MUST REMAIN WITHIN DIMENSIONS

DIMENSION STYLE
MM ONLY
DRAWN BY Y.WADA DATE 2004/05/14
CHECKED BY M.SASAO DATE 2004/05/14
APPROVED BY M.SASAO DATE 2004/05/14
MATERIAL NO. SEE CHART
SIZE A3

SCALE 2:1
DESIGN UNITS METRIC
THIRD ANGLE PROJECTION
TITLE 0.8MM PITCH S.O.DIMM SOCKET 144CKT H=4 -LEAD FREE-
MOLEX MOLEX INCORPORATED
DOCUMENT NO. SD-54697-004 SHEET NO. 1 OF 3
THIS DRAWING CONTAINS INFORMATION THAT IS PROPRIETARY TO MOLEX INCORPORATED AND SHOULD NOT BE USED WITHOUT WRITTEN PERMISSION



推奨基板寸法
RECOMMENDED PCB PATTERN LAYOUT
(THK:1.2±0.1)



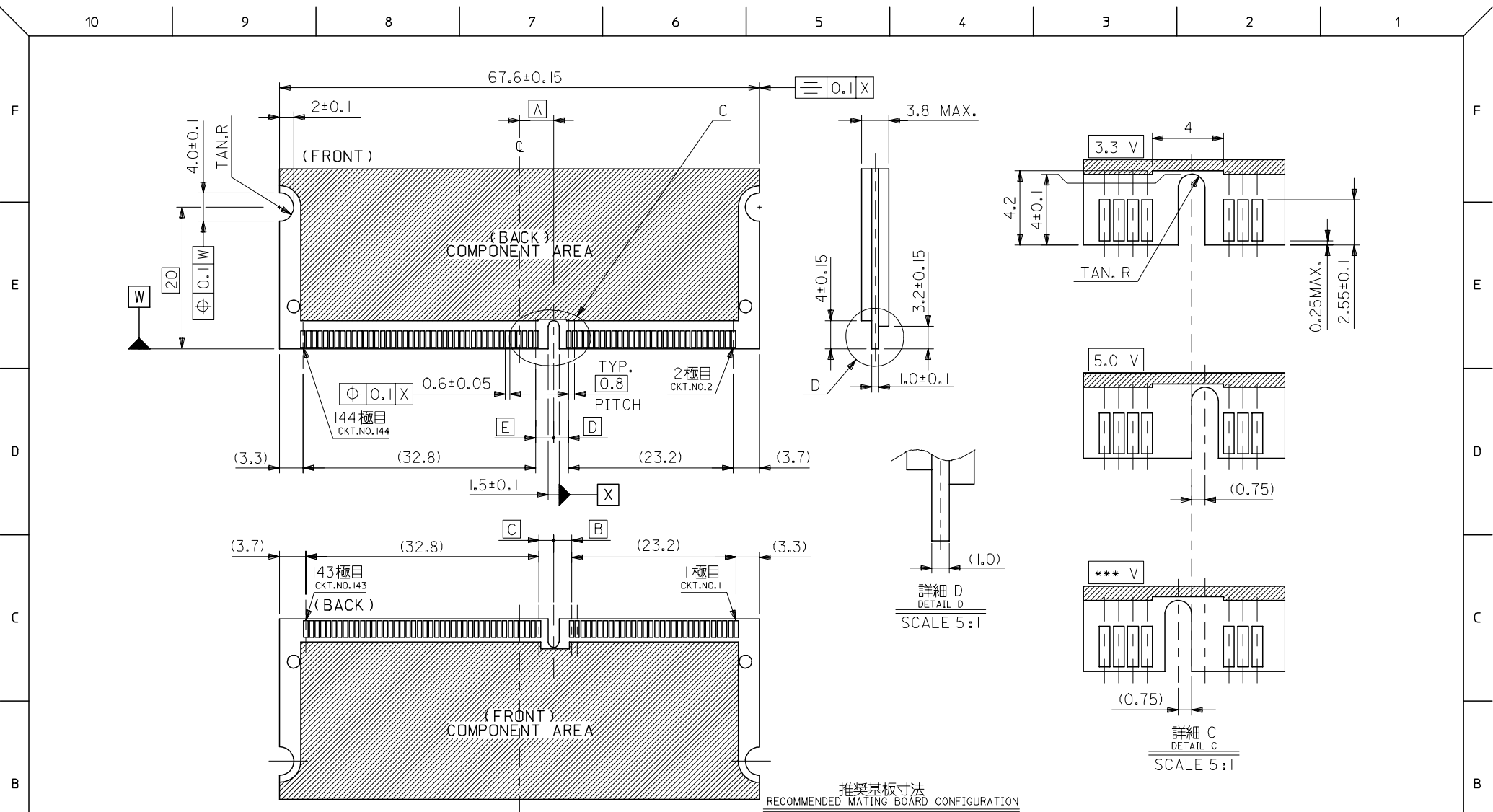
断面 A-A
SECTION A-A
SCALE 5:1

MODEL NO. 54697-700*

MATERIAL 材料
注記参照
SEE NOTES

FINISH 仕上げ
注記参照
SEE NOTES

REVISED EC NO: J2007-0519 DRWNG: SALT001 CHKD: THARUYAMA APPR: NUKITA	DESCRIPTION GENERAL TOLERANCES (UNLESS SPECIFIED)	10 UNDER	± 0.2	DIMENSION STYLE MM ONLY	SCALE 2:1	DESIGN UNITS METRIC	THIRD ANGLE PROJECTION	TITLE 0.8MM PITCH S.O.DIMM SOCKET 144CKT H=4 -LEAD FREE-
		10 OVER 30 UNDER	± 0.25					
		30 OVER	± 0.3					
		ANGULAR	± 3 °					
		DRAFT WHERE APPLICABLE MUST REMAIN WITHIN DIMENSIONS						
REV A		DRAWN BY Y. WADA	DATE 2004/05/14	MATERIAL NO. SEE SHEET 1 OF 3	DOCUMENT NO. SD-54697-004	MOLEX INCORPORATED		
		CHECKED BY M. SASAO	DATE 2004/05/14	SIZE A3	THIS DRAWING CONTAINS INFORMATION THAT IS PROPRIETARY TO MOLEX INCORPORATED AND SHOULD NOT BE USED WITHOUT WRITTEN PERMISSION			
		APPROVED BY M. SASAO	DATE 2004/05/14	SHEET NO. 2 OF 3				



MATERIAL
材料
注記参照
SEE NOTES

FINISH
仕上げ
注記参照
SEE NOTES

REVISED	DESCRIPTION
EC NO: J2007-0519	
DRW: KSAIT001	2006/08/25
CHK: D:THARUYAMA	2006/08/25
APP: NUKITA	2006/09/04
A	

GENERAL TOLERANCES (UNLESS SPECIFIED)	
10 UNDER	± 0.2
10 OVER 30 UNDER	± 0.25
30 OVER	± 0.3
ANGULAR	± 3 °
DRAFT WHERE APPLICABLE MUST REMAIN WITHIN DIMENSIONS	

DIMENSION STYLE MM ONLY	
DRAWN BY Y. WADA	DATE 2004/05/14
CHECKED BY M. SASAO	DATE 2004/05/14
APPROVED BY M. SASAO	DATE 2004/05/14
MATERIAL NO. SEE SHEET 1 OF 3	

SCALE 2:1	DESIGN UNITS METRIC	MODEL NO. 54697-700*
THIRD ANGLE PROJECTION		
TITLE 0.8MM PITCH S.O.DIMM SOCKET 144CKT H=4 -LEAD FREE-		
MOLEX INCORPORATED		
DOCUMENT NO. SD-54697-004	SHEET NO. 3 OF 3	
THIS DRAWING CONTAINS INFORMATION THAT IS PROPRIETARY TO MOLEX INCORPORATED AND SHOULD NOT BE USED WITHOUT WRITTEN PERMISSION		