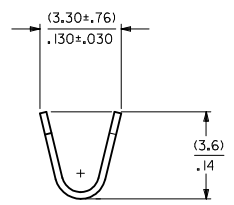
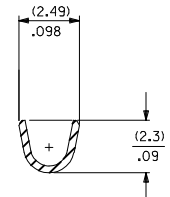
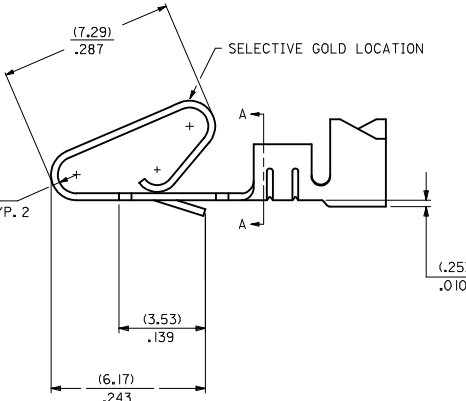
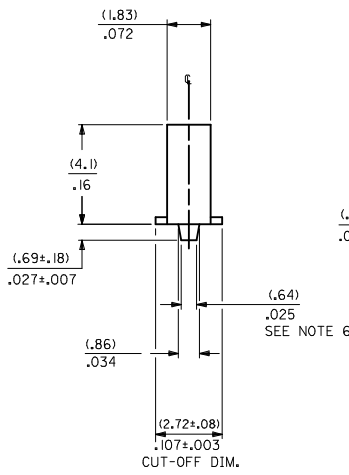


MATERIAL CODE
 (.27)/.0106 THK
 1=BRASS
 3=PHOS BRONZE

WINDING SPEC.
 A=CHAIN, PER WINDING DETAIL "A"
 BLANK=CHAIN, PER WINDING DETAIL "B"
 L=LOOSE

OPTION CODE
 BLANK=AS SHOWN
 C=CAT EAR OPTION

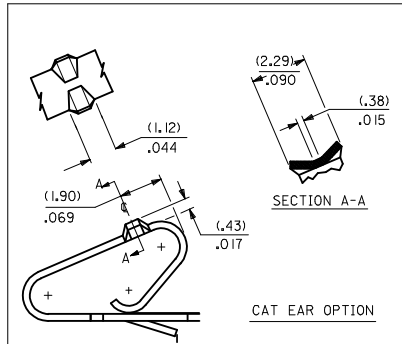
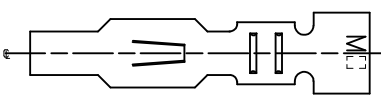
- FINISH:
- (P909) OVERALL HOT TIN DIP: (0.00254)/.000100 MIN.
 - (122) OVERALL TIN: (0.00381)/.000150 MIN.
OVER (0.00076)/.000030 MIN. NICKEL
 - (154) OVERALL TIN: (0.00254)/.000100 MIN.
OVER (0.00127)/.000050 MIN. NICKEL
 - (224) OVERALL MATTE TIN: (0.00508)/.000200 MIN.
OVER (0.00127)/.000050 MIN. NICKEL
 - (550) SELECT GOLD: (0.00038)/.000015 MIN.
OVERALL GOLD FLASH: (0.00005)/.000002 MIN.
OVERALL NICKEL UNDERPLATE: (0.00076)/.000030 MIN.
 - (555) SELECT GOLD: (0.00038)/.000015 MIN.
OVERALL NICKEL UNDERPLATE: (0.00076)/.000030 MIN.
 - (558) SELECT GOLD: (0.00076)/.000030 MIN.
OVERALL GOLD FLASH: (0.00005)/.000002 MIN.
OVERALL NICKEL UNDERPLATE: (0.00127)/.000050 MIN.
 - (561) SELECT GOLD: (0.00076)/.000030 MIN.
OVERALL NICKEL UNDERPLATE: (0.00127)/.000050 MIN.
 - (591) SELECT GOLD: (0.00127)/.000050 MIN.
OVERALL GOLD FLASH: (0.00005)/.000002 MIN.
OVERALL NICKEL UNDERPLATE: (0.00127)/.000050 MIN.



SECTION A-A
BACKGROUND OMITTED

BACKGROUND OMITTED

- NOTES:
1. MATERIAL: SEE LEGEND
 2. FINISH: SEE LEGEND
 3. THIS PART CONFORMS TO PRODUCT SPECIFICATION PS-08-50.
 4. PACKAGING SPECIFICATION: LOOSE TERMINALS: PER PK-2759-001
CHAIN FORM TERMINALS: NONE
 5. DIMENSIONS GIVEN ACROSS CENTERLINES ARE SYMMETRICAL ABOUT THOSE CENTERLINES WITHIN HALF THE TOTAL TOLERANCE.
 6. (0.86 ±0.05)/.034 ±.002 IS AN OPTIONAL DESIGN.
 7. CRIMP ACCEPTS 18 TO 24 AWG WIRE WITH (2.79)/.110 MAX. INSULATION DIAMETER. AND CAN ACCEPT (3.00)/.118 MAX. INSULATION DIAMETER WITH SPECIAL TOOLING.
 8. TERMINAL FOR USE IN 2139, 3001, 3069, AND 91813 SERIES HOUSINGS WITH (2.54)/.100 MAX. INSULATION DIAMETER, 2574, 6422, AND 5239 SERIES HOUSINGS WITH (2.79)/.110 MAX. INSULATION DIAMETER. AND 41695 SERIES HOUSING WITH (3.00)/.118 MAX. INSULATION DIAMETER.
 9. THIS PART CONFORMS TO CLASS B REQUIREMENTS OF COSMETIC SPECIFICATION PS-45499-002.



SECTION A-A
CAT EAR OPTION

| | | | | | | | |
|---|---|---|-------------------------|---------------------|--------------|--|--|
| ADD WINDING VIEWS EC NO. UCP2014-4131 DRAWN/KIPPER 2014/04/07 CHYKONGUEN 2014/04/07 APPR:FSMTH 2014/04/21 | QUALITY SYMBOLS | GENERAL TOLERANCES (UNLESS SPECIFIED) | DIMENSION STYLE | SCALE | DESIGN UNITS | THIRD ANGLE PROJECTION | |
| | ∇=0 ∇=0 ∇=0 | mm INCH 4 PLACES ±.010 ±.010 3 PLACES ±.025 ±.014 2 PLACES ±.036 ±.014 1 PLACE ±.036 ±.014 0 PLACE ±.036 ±.014 | MM/IN | 10:1 | INCH | DRAWN BY DATE SAMIEC 06/03/86 CHECKED BY DATE PATEL 06/03/86 APPROVED BY DATE FSMITH 2012/03/20 | CRIMP TERMINAL .156 CENTERS 18 TO 24 GA WIRE molex |
| | DRAFT WHERE APPLICABLE MUST REMAIN WITHIN DIMENSIONS | ANGULAR ±1/2° MATERIAL NO. SEE CHART SIZE D | DOCUMENT NO. SD-2478 | SHEET NO. 1 OF 2 | | | |
| | THIS DRAWING CONTAINS INFORMATION THAT IS PROPRIETARY TO MOLEX INCORPORATED AND SHOULD NOT BE USED WITHOUT WRITTEN PERMISSION | | | | | | |

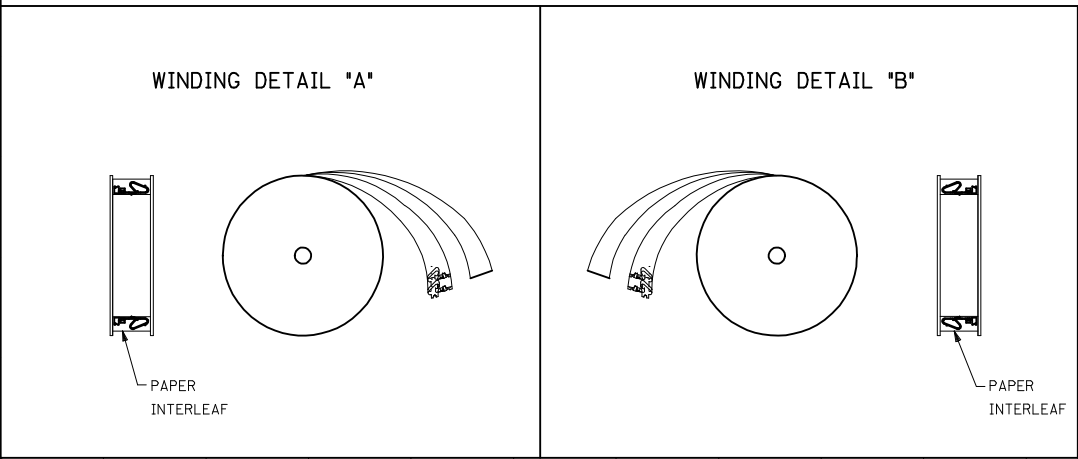
20 19 18 17 16 15 14 13 12 11 10 9 8 7 6 5 4 3 2 1

| 2478-1-(***)* | | |
|---------------|----------------|--|
| PART NO. | ENG. NO. | |
| 08-50-0105 | 2478-1-(P909) | |
| 08-50-0106 | 2478-1-(P909)L | |
| 08-56-0105 | 2478-1-(550) | |
| 08-56-0106 | 2478-1-(550)L | |
| 08-55-0103 | 2478-1-(555) | |
| 08-55-0104 | 2478-1-(555)L | |
| 08-50-0119 | 2478-1-(122) | |
| 08-50-0120 | 2478-1-(122)L | |
| 08-50-0271 | 2478-1-(P909)A | |
| 08-50-0015 | 2478-1-(154) | |
| 08-50-0016 | 2478-1-(154)L | |
| 08-50-0063 | 2478-1-(224) | |
| 08-50-0064 | 2478-1-(224)L | |
| 08-55-0133 | 2478-1-(561) | |
| 08-55-0134 | 2478-1-(561)L | |
| | | |
| | | |
| | | |
| | | |
| | | |
| | | |
| | | |
| | | |

| 2478-3-(***)* | | |
|---------------|----------------|--|
| PART NO. | ENG. NO. | |
| 08-52-0071 | 2478-3-(P909) | |
| 08-52-0072 | 2478-3-(P909)L | |
| 08-65-0114 | 2478-3-(555) | |
| 08-65-0115 | 2478-3-(555)L | |
| 08-52-0811 | 2478-3-(154) | |
| 08-52-0812 | 2478-3-(154)L | |
| 08-50-0281 | 2478-3-(122) | |
| | 2478-3-(122)L | |
| 08-58-0121 | 2478-3-(550) | |
| 08-58-0122 | 2478-3-(550)L | |
| 08-58-0103 | 2478-3-(591) | |
| 08-58-0104 | 2478-3-(591)L | |
| 08-58-0114 | 2478-3-(558) | |
| 08-58-0115 | 2478-3-(558)L | |
| | | |
| | | |
| | | |
| | | |
| | | |
| | | |
| | | |
| | | |

| 2478-1C-(***)* | | |
|----------------|----------------|--|
| PART NO. | ENG. NO. | |
| 08-50-0091 | 2478-1C-(154) | |
| 08-50-0093 | 2478-1C-(154)L | |
| | | |
| | | |
| | | |
| | | |
| | | |
| | | |
| | | |
| | | |
| | | |
| | | |
| | | |
| | | |
| | | |
| | | |
| | | |
| | | |
| | | |
| | | |
| | | |

| 2478-3C-(***)* | | |
|----------------|-----------------|--|
| PART NO. | ENG. NO. | |
| 08-52-0044 | 2478-3C-(P909) | |
| 08-52-0045 | 2478-3C-(P909)L | |
| 08-52-0023 | 2478-3C-(154) | |
| 08-52-0024 | 2478-3C-(154)L | |
| | | |
| | | |
| | | |
| | | |
| | | |
| | | |
| | | |
| | | |
| | | |
| | | |
| | | |
| | | |
| | | |
| | | |
| | | |
| | | |
| | | |
| | | |



| | | | | | | | | | | | | |
|--|--------------------------------------|--|-------|-----------------|------------|---|----------|--|--|------------------------|--|--|
| SEE SHEET 1 IEC NO. UCF2014-4131 DRAWN BY: CHYDANGUEN CHECKED BY: APPROV: FSMITH DATE: 2014/04/07 DATE: 2014/04/21 | QUALITY SYMBOLS ▽=0 ▽=0 ▽=0 | GENERAL TOLERANCES (UNLESS SPECIFIED) | | DIMENSION STYLE | | SCALE | | DESIGN UNITS | | THIRD ANGLE PROJECTION | | |
| | | | | MM/IN | | --- | | INCH | | | | |
| | | | | mm | INCH | DRAWN BY | DATE | TITLE | | | | |
| | | | | 4 PLACES ±.010 | ±.010 | SAMIEC | 06/03/86 | CRIMP TERMINAL .156 CENTERS 18 TO 24 GA WIRE molex | | | | |
| | | | | 3 PLACES ±.025 | ±.014 | CHECKED BY | DATE | | | | | |
| | | 2 PLACES ±0.36 | ±.014 | PATEL | 06/03/86 | SD-2478 | | SHEET NO. | | | | |
| | | 1 PLACE ±.036 | ±.014 | APPROVED BY | DATE | | | 2 OF 2 | | | | |
| | | 0 PLACE ±.036 | ±.014 | FSMITH | 2012/03/20 | | | | | | | |
| | | ANGULAR ±1/2° | | MATERIAL NO. | | SEE CHART | | | | | | |
| | | DRAFT WHERE APPLICABLE MUST REMAIN WITHIN DIMENSIONS | | SIZE | | D THIS DRAWING CONTAINS INFORMATION THAT IS PROPRIETARY TO MOLEX INCORPORATED AND SHOULD NOT BE USED WITHOUT WRITTEN PERMISSION | | | | | | |