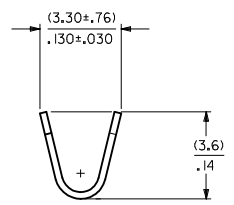
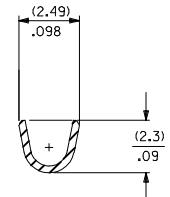
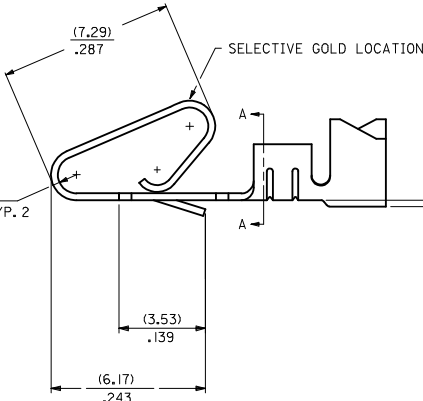
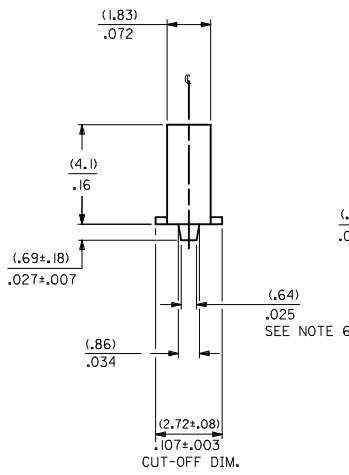


MATERIAL CODE
 (.27)/.0106 THK
 1=BRASS
 3=PHOS BRONZE

WINDING SPEC.
 A=CHAIN, PER WINDING DETAIL "A"
 BLANK=CHAIN, PER WINDING DETAIL "B"
 L=LOOSE

OPTION CODE
 BLANK=AS SHOWN
 C=CAT EAR OPTION

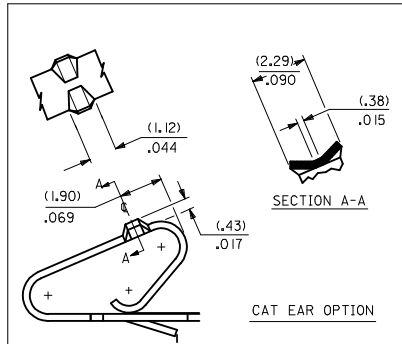
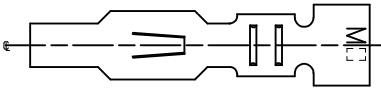
- FINISH:
- (P909) OVERALL HOT TIN DIP: (0.00254)/.000100 MIN.
 - (122) OVERALL TIN: (0.00381)/.000150 MIN.
OVER (0.00076)/.000030 MIN. NICKEL
 - (154) OVERALL TIN: (0.00254)/.000100 MIN.
OVER (0.00127)/.000050 MIN. NICKEL
 - (224) OVERALL MATTE TIN: (0.00508)/.000200 MIN.
OVER (0.00127)/.000050 MIN. NICKEL
 - (550) SELECT GOLD: (0.00038)/.000015 MIN.
OVERALL GOLD FLASH: (0.00005)/.000002 MIN.
OVERALL NICKEL UNDERPLATE: (0.00076)/.000030 MIN.
 - (555) SELECT GOLD: (0.00038)/.000015 MIN.
OVERALL NICKEL UNDERPLATE: (0.00076)/.000030 MIN.
 - (558) SELECT GOLD: (0.00076)/.000030 MIN.
OVERALL GOLD FLASH: (0.00005)/.000002 MIN.
OVERALL NICKEL UNDERPLATE: (0.00127)/.000050 MIN.
 - (561) SELECT GOLD: (0.00076)/.000030 MIN.
OVERALL NICKEL UNDERPLATE: (0.00127)/.000050 MIN.
 - (591) SELECT GOLD: (0.00127)/.000050 MIN.
OVERALL GOLD FLASH: (0.00005)/.000002 MIN.
OVERALL NICKEL UNDERPLATE: (0.00127)/.000050 MIN.



SECTION A-A
BACKGROUND OMITTED

BACKGROUND OMITTED

- NOTES:
1. MATERIAL: SEE LEGEND
 2. FINISH: SEE LEGEND
 3. THIS PART CONFORMS TO PRODUCT SPECIFICATION PS-08-50.
 4. PACKAGING SPECIFICATION: LOOSE TERMINALS: PER PK-2759-001
CHAIN FORM TERMINALS: NONE
 5. DIMENSIONS GIVEN ACROSS CENTERLINES ARE SYMMETRICAL ABOUT THOSE CENTERLINES WITHIN HALF THE TOTAL TOLERANCE.
 6. (0.86 ±0.05)/.034 ±.002 IS AN OPTIONAL DESIGN.
 7. CRIMP ACCEPTS 18 TO 24 AWG WIRE WITH (2.79)/.110 MAX. INSULATION DIAMETER.
AND CAN ACCEPT (3.00)/.118 MAX. INSULATION DIAMETER WITH SPECIAL TOOLING.
 8. TERMINAL FOR USE IN 2139, 3001, 3069, AND 91813 SERIES HOUSINGS WITH (2.54)/.100 MAX. INSULATION DIAMETER,
2574, 6422, AND 5239 SERIES HOUSINGS WITH (2.79)/.110 MAX. INSULATION DIAMETER,
AND 41695 SERIES HOUSING WITH (3.00)/.118 MAX. INSULATION DIAMETER.
 9. THIS PART CONFORMS TO CLASS B REQUIREMENTS OF COSMETIC SPECIFICATION PS-45499-002.



SECTION A-A

CAT EAR OPTION

REV	DESCRIPTION	DATE	APPROVED
Y1	ADD WINDING VIEWS	2014/04/07	CHYKONGUEN
		2014/04/07	CHYKONGUEN
		2014/04/21	FSMITH

QUALITY SYMBOLS		GENERAL TOLERANCES (UNLESS SPECIFIED)		DIMENSION STYLE		SCALE		DESIGN UNITS		THIRD ANGLE PROJECTION	
mm	INCH	mm	INCH	MM/IN	DATE	10:1	INCH	DATE	INCH	DATE	INCH
▽=0	4 PLACES ±	---	±	---	SAMIEC	06/03/86					
▽=0	3 PLACES ±	---	±	0.10	CHECKED BY	DATE					
▽=0	2 PLACES ±	0.25	±	0.14	PATEL	06/03/86					
	1 PLACE ±	0.36	±	---	APPROVED BY	DATE					
	0 PLACE ±	---	±	---	FSMITH	2012/03/20					
		ANGULAR ±1/2°		MATERIAL NO.		DOCUMENT NO.				SHEET NO.	
		DRAFT WHERE APPLICABLE MUST REMAIN WITHIN DIMENSIONS		SEE CHART		SD-2478				1 OF 2	
THIS DRAWING CONTAINS INFORMATION THAT IS PROPRIETARY TO MOLEX INCORPORATED AND SHOULD NOT BE USED WITHOUT WRITTEN PERMISSION											

CRIMP TERMINAL
 .156 CENTERS
 18 TO 24 GA WIRE

molex

