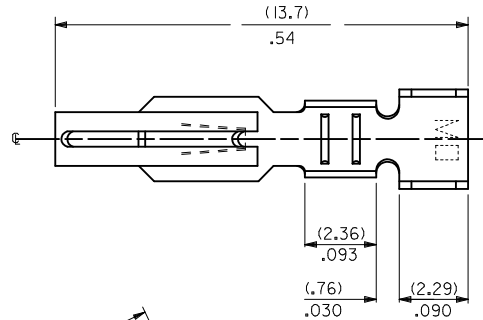


| PART NO. | ENG NO. | PLATING |
|-------------|--------------|---------|
| 008-56-0113 | 2477-G | 565 |
| 008-56-0114 | 2477-GL | 565 |
| 008-50-0109 | 2477-(P909) | P909 |
| 008-50-0110 | 2477-(P909)L | P909 |

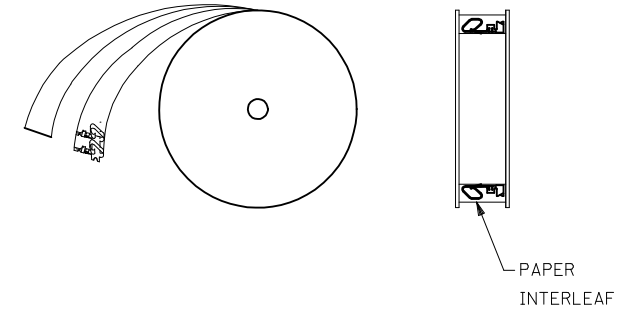
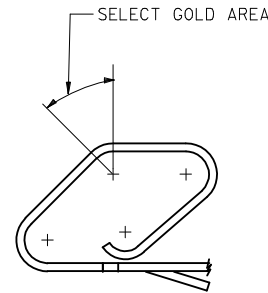
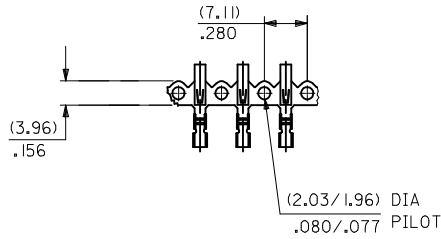
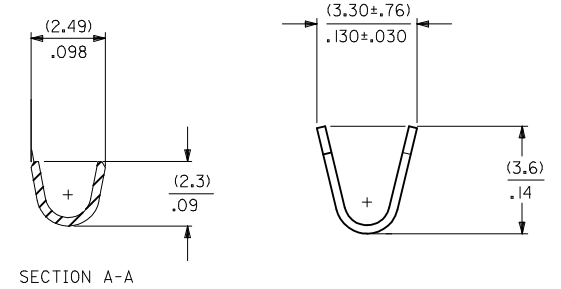
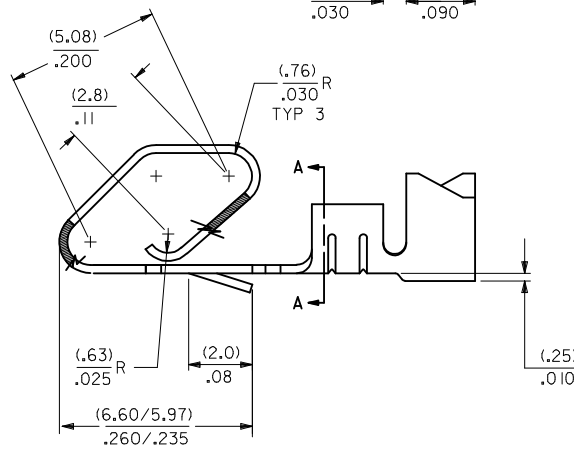
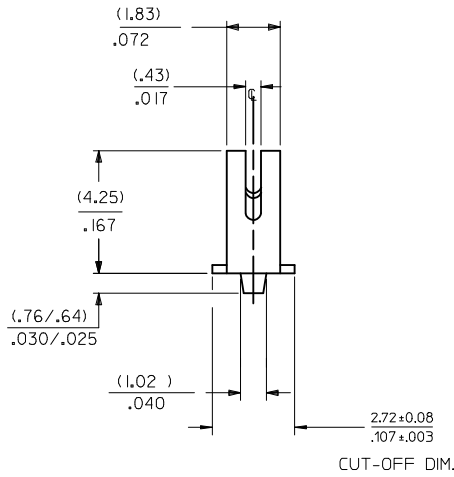


2477-***-***-***
 MATERIAL CODE
 (.25)/.010 THK
 BLANK= BRASS

WINDING SPEC.
 BLANK=CHAIN, PER WINDING DETAIL "B"
 L=LOOSE

OPTION CODE
 BLANK=AS SHOWN

PLATING
 SEE NOTE 2



WINDING DETAIL "B"

- NOTES:
- MATERIAL: SEE LEGEND
 - FINISH: P909: OVERALL HOT TIN DIP: (0.00254)/.000100 MIN.
 565: SELECT GOLD: (0.00051)/.000020 MIN.
 OVERALL NICKEL: (0.00076)/.000030 MIN.
 OVERALL GOLD FLASH: (0.00005)/.000002 MIN.
 - PRODUCT SPECIFICATION: PS-08-50
 - CRIMP ACCEPTS 18 TO 24 GA. WIRE WITH (2.79)/.110 MAX. INSULATION DIA.
 - TERMINAL FOR USE IN 2139 AND 3069 SERIES HOUSINGS WITH (2.54)/.100 MAX. INSULATION DIAMETER AND 172159 SERIES HOUSINGS WITH (2.79)/.110 MAX. INSULATION DIAMETER.
 - THIS PART CONFORMS TO CLASS B REQUIREMENTS OF COSMETIC SPECIFICATION PS-45499-002.
 - MATING TERMINALS TO ROUND PINS IS NOT RECOMMENDED.

| REV | DESCRIPTION | QUALITY SYMBOLS | GENERAL TOLERANCES (UNLESS SPECIFIED) | | DIMENSION STYLE | SCALE | DESIGN UNITS | THIRD ANGLE PROJECTION | |
|-----|-----------------------------------------------------------------------------------------------------------------|-------------------|-------------------------------------------------------------------------------------------------------------------------------|-----------------------------------------------|------------------------------------------------------------------------------------------------|------------------------------------------------------------------------|---------------------|------------------------|--|
| | | | mm | INCH | MM/IN | --- | INCH | | |
| AD2 | ADD NOTE 7 EC NO: UCP2015-3216 DRWN:HKIPPER 2015/02/06 CHKD:JBELL 2015/02/06 APPR:FSM/TH 2015/02/18 | ▽=0 ▽=0 ▽=0 | 4 PLACES ± --- ± --- 3 PLACES ± --- ± .010 2 PLACES ± 0.25 ± .014 1 PLACE ± 0.36 ± --- 0 PLACE ± ± | ± --- ± --- ± .010 ± .014 ± --- ± | DRAWN BY DATE SAMI EC 1995/03/02 CHECKED BY DATE PATEL 1995/03/02 APPROVED BY DATE | TITLE KK CRIMP TERMINAL (3.96)/.156 CENTERS 18 TO 24 AWG WIRE | | | |
| | | | ANGULAR ±1/2° DRAFT WHERE APPLICABLE MUST REMAIN WITHIN DIMENSIONS | | MATERIAL NO. SEE CHART | DOCUMENT NO. SD-2477-**** | SHEET NO. 1 OF 1 | | |
| | | | THIS DRAWING CONTAINS INFORMATION THAT IS PROPRIETARY TO MOLEX INCORPORATED AND SHOULD NOT BE USED WITHOUT WRITTEN PERMISSION | | | | | | |