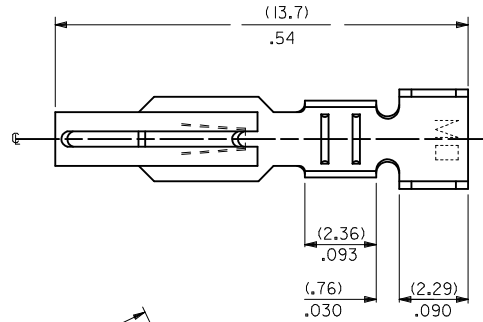


PART NO.	ENG NO.	PLATING
008-56-0113	2477-G	565
008-56-0114	2477-GL	565
008-50-0109	2477-(P909)	P909
008-50-0110	2477-(P909)L	P909

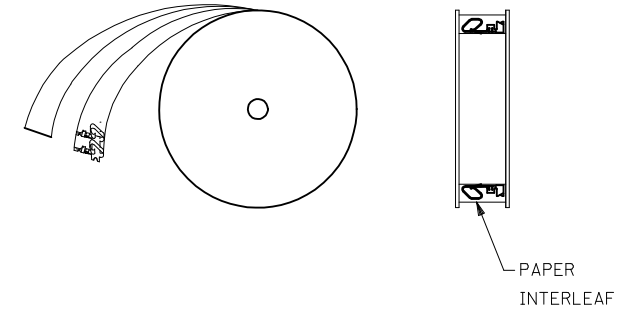
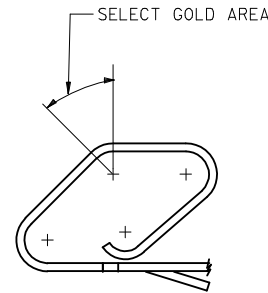
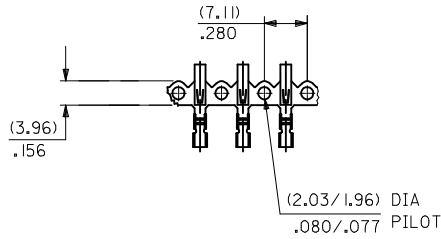
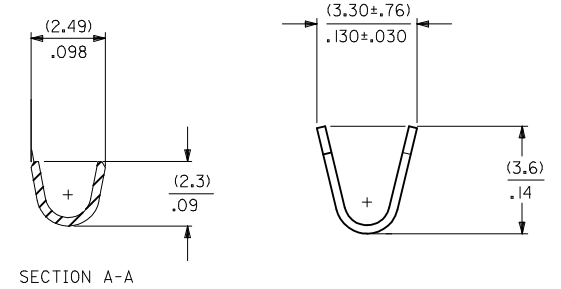
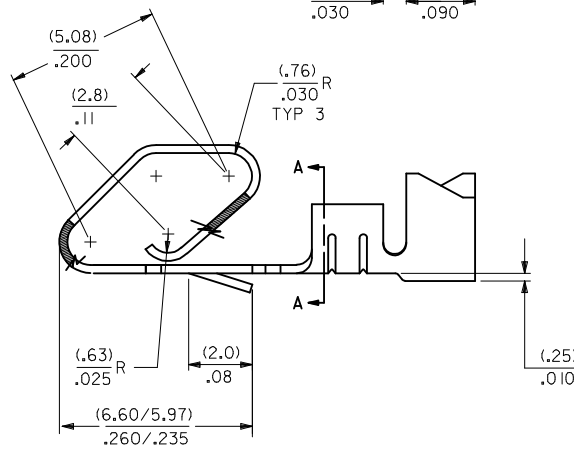
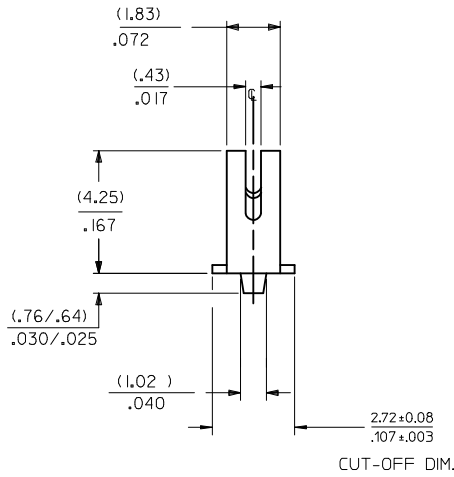


2477- * * * - * * - * *
 MATERIAL CODE
 (.25)/.010 THK
 BLANK= BRASS

WINDING SPEC.
 BLANK=CHAIN, PER WINDING DETAIL "B"
 L=LOOSE

OPTION CODE
 BLANK=AS SHOWN

PLATING
 SEE NOTE 2



WINDING DETAIL "B"

- NOTES:
- MATERIAL: SEE LEGEND
 - FINISH: P909: OVERALL HOT TIN DIP: (0.00254)/.000100 MIN.
 565: SELECT GOLD: (0.00051)/.000020 MIN.
 OVERALL NICKEL: (0.00076)/.000030 MIN.
 OVERALL GOLD FLASH: (0.00005)/.000002 MIN.
 - PRODUCT SPECIFICATION: PS-08-50
 - CRIMP ACCEPTS 18 TO 24 GA. WIRE WITH (2.79)/.110 MAX. INSULATION DIA.
 - TERMINAL FOR USE IN 2139 AND 3069 SERIES HOUSINGS WITH (2.54)/.100 MAX. INSULATION DIAMETER AND 172159 SERIES HOUSINGS WITH (2.79)/.110 MAX. INSULATION DIAMETER.
 - THIS PART CONFORMS TO CLASS B REQUIREMENTS OF COSMETIC SPECIFICATION PS-45499-002.
 - MATING TERMINALS TO ROUND PINS IS NOT RECOMMENDED.

ADD NOTE 7 EC NO: UCP2015-3216 DRWN:HKIPPER 2015/02/06 CHKD:JBELL 2015/02/06 APPR:FSM/TH 2015/02/18	QUALITY SYMBOLS ▽=0 ▽=0 ▽=0	GENERAL TOLERANCES (UNLESS SPECIFIED)		DIMENSION STYLE	SCALE	DESIGN UNITS	THIRD ANGLE PROJECTION
		mm	INCH	MM/IN	---	INCH	
ADZ	REV	4 PLACES	± ---	± ---	DRAWN BY	DATE	TITLE
		3 PLACES	± ---	± .010	SAMIEC	1995/03/02	
		2 PLACES	± 0.25	± .014	CHECKED BY	DATE	molex
		1 PLACE	± 0.36	± ---	PATEL	1995/03/02	
		0 PLACE	±	±	APPROVED BY	DATE	SHEET NO. 1 OF 1
ANGULAR ±1/2°		DRAFT WHERE APPLICABLE MUST REMAIN WITHIN DIMENSIONS		MATERIAL NO.	DOCUMENT NO.		
				SIZE	THIS DRAWING CONTAINS INFORMATION THAT IS PROPRIETARY TO MOLEX INCORPORATED AND SHOULD NOT BE USED WITHOUT WRITTEN PERMISSION		