

2578 - * - * * *

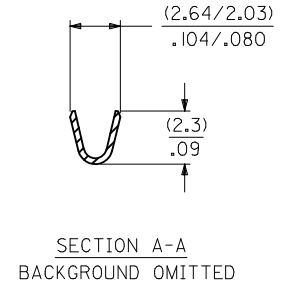
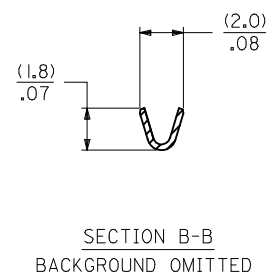
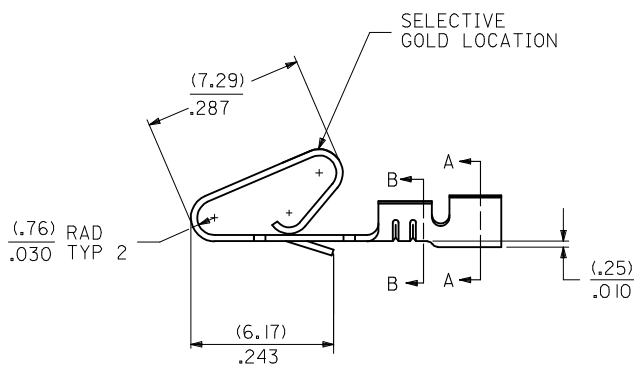
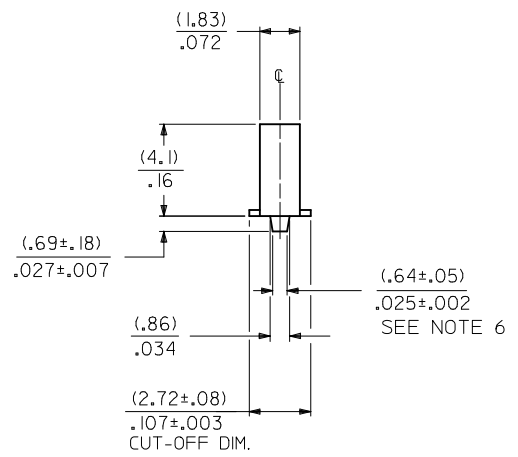
MATERIAL CODE
 (.28)/.0106 THK
 BLANK=BRASS
 B=PHOS BRONZE

WINDING SPEC.
 A=CHAIN, PER WINDING DETAIL "A"
 BLANK=CHAIN, PER WINDING DETAIL "B"
 L=LOOSE

PLATING CODE
 (PER SDES-88)

OPTIONS
 BLANK=AS SHOWN
 1 = WITH CAT EARS

(122) - OVERALL TIN: (0.00381)/.000150 MIN.
 OVER (0.00076)/.000030 MIN. NICKEL
 (154) - OVERALL TIN (0.00254)/.000100 MIN.
 OVER (0.00127)/.000050 MIN. NICKEL
 (224) - OVERALL MATTE TIN: (0.00508)/.000200 MIN.
 OVER (0.00127)/.000050 MIN. NICKEL
 (550) - SELECT GOLD: (0.00038)/.000015 MIN.
 OVERALL GOLD FLASH: (0.00005)/.000002 MIN.
 OVERALL NICKEL UNDERPLATE: (0.00076)/.000030 MIN.
 (555) - SELECT GOLD: (0.00038)/.000015 MIN.
 OVERALL NICKEL UNDERPLATE: (0.00076)/.000030 MIN.
 (558) - SELECT GOLD: (0.00076)/.000030 MIN.
 OVERALL GOLD FLASH: (0.00005)/.000002 MIN.
 OVERALL NICKEL UNDERPLATE: (0.00127)/.000050 MIN.
 (P909) - OVERALL HOT TIN DIP: (0.00254)/.000100 MIN



1. MATERIAL: SEE LEGEND
2. FINISH: SEE LEGEND
3. PRODUCT SPECIFICATION: PS-08-50
4. CRIMP ACCEPTS 22 TO 26 GA. WIRE WITH (1.65)/0.65 MAX INSULATION DIA.
5. DIMENSIONS GIVEN ACROSS CENTERLINES ARE SYMMETRICAL ABOUT THOSE CENTERLINES WITHIN HALF THE TOTAL TOLERANCE.
6. OPTIONAL DESIGN (.86±.05)/.034±.002
7. THIS PART CONFORMS TO CLASS B REQUIREMENTS OF COSMETIC SPECIFICATION PS-45499-002

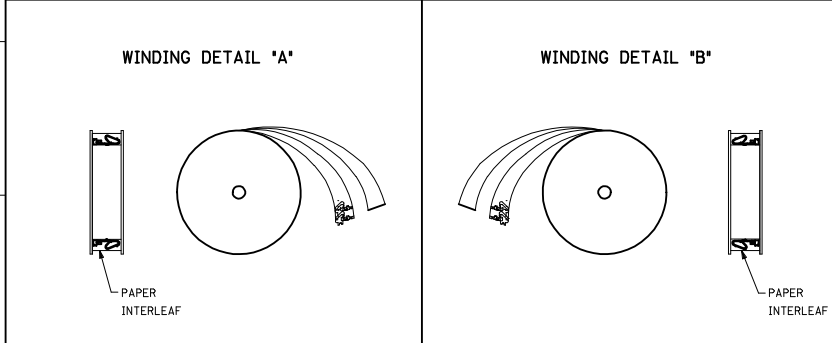
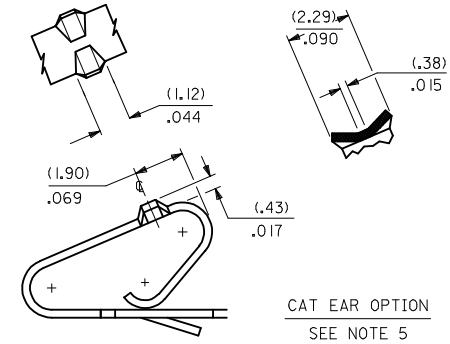
| | |
|-------------------------|-----------------|
| ADD WINDING VIEW | QUALITY SYMBOLS |
| EC NO: UCP2014-4131 | ▽=0 |
| DRW:WIKIPPER 2014/04/07 | ▽=0 |
| CHKD:NGUYEN 2014/04/07 | ▽=0 |
| APPR:FSMITH 2014/04/21 | |
| REV: X1 | |

| | |
|--|--------|
| GENERAL TOLERANCES (UNLESS SPECIFIED) | |
| mm | INCH |
| 4 PLACES ± --- ± --- | ± .010 |
| 3 PLACES ± --- ± --- | ± .014 |
| 2 PLACES ± 0.25 ± --- | ± --- |
| 1 PLACE ± 0.36 ± --- | ± --- |
| 0 PLACE ± --- ± --- | |
| ANGULAR ±1/2° | |
| DRAFT WHERE APPLICABLE MUST REMAIN WITHIN DIMENSIONS | |

| | |
|-----------------|------------|
| DIMENSION STYLE | |
| MM/IN | |
| DRAWN BY | DATE |
| PEREZ/AR | 01/29/87 |
| CHECKED BY | DATE |
| PATEL | 01/29/87 |
| APPROVED BY | DATE |
| FSMITH | 2014/04/21 |
| MATERIAL NO. | |
| SEE CHART | |

| | | |
|--|--------------|------------------------|
| SCALE | DESIGN UNITS | THIRD ANGLE PROJECTION |
| --- | INCH | |
| TITLE | | |
| CRIMP TERMINAL (3.96)/.156 CENTERS 22 TO 26 GA WIRE | | |
| molex | | |
| DOCUMENT NO. | SHEET NO. | |
| SD-2578 | 1 OF 2 | |
| THIS DRAWING CONTAINS INFORMATION THAT IS PROPRIETARY TO MOLEX. INCORPORATED AND SHOULD NOT BE USED WITHOUT WRITTEN PERMISSION | | |

| 2578-(****)* | | 2578-B-(****)* | |
|--------------|--------------|----------------|----------------|
| PART NO. | ENG. NO. | PART NO. | ENG. NO. |
| 08-50-0107 | 2578-(P909) | 08-50-0133 | 2578-B-(P909) |
| 08-50-0108 | 2578-(P909)L | 08-50-0134 | 2578-B-(P909)L |
| 08-50-0111 | 2578-(154) | 08-65-0116 | 2578-B-(555) |
| 08-50-0112 | 2578-(154)L | 08-65-0117 | 2578-B-(555)L |
| 08-56-0107 | 2578-(550) | 08-60-0003 | 2578-B-(122) |
| 08-56-0108 | 2578-(550)L | 08-60-0004 | 2578-B-(122)L |
| 08-55-0105 | 2578-(555) | 08-65-0110 | 2578-B-(558) |
| 08-55-0106 | 2578-(555)L | 08-65-0111 | 2578-B-(558)L |
| 08-50-0061 | 2578-(224) | 08-58-0125 | 2578-B-(550) |
| 08-50-0062 | 2578-(224)L | 08-58-0126 | 2578-B-(550)L |
| 08-55-0137 | 2578-(558)A | | |
| | 2578-(558)L | | |
| 08-50-0018 | 2578-(154) | | |
| 08-50-0019 | 2578-(154)L | | |
| 08-55-0123 | 2578-(558) | | |
| | 2578-(558)L | | |



| | | | | | | | | | |
|--|---------------------|--|---|--|--|---|----------------------|--------------------------------|--|
| SEE SHEET 1 EC NO: UCP2014-4131 DRAWN BY: DRWIN/KIPPER 2014/04/07 CHECKED BY: CHKD:NGUYEN 2014/04/07 APPR:FSMITH 2014/04/21 | QUALITY SYMBOLS | GENERAL TOLERANCES (UNLESS SPECIFIED) | | DIMENSION STYLE MM/IN | | SCALE --- | DESIGN UNITS INCH | THIRD ANGLE PROJECTION | |
| | | 4 PLACES ± --- ± --- 3 PLACES ± --- ± .010 2 PLACES ± 0.25 ± .014 1 PLACE ± 0.36 ± --- 0 PLACE ± --- ± --- | DRAWN BY: PEREZ/AR DATE: 01/29/87 CHECKED BY: PATEL DATE: 01/29/87 APPROVED BY: FSMITH DATE: 2014/04/21 | TITILE CRIMP TERMINAL (3.96)/.156 CENTERS 22 TO 26 GA WIRE | | | | DOCUMENT NO. SD-2578 | |
| DRAFT WHERE APPLICABLE MUST REMAIN WITHIN DIMENSIONS | | ANGULAR ±1/2° | | SEE CHART | | THIS DRAWING CONTAINS INFORMATION THAT IS PROPRIETARY TO MOLEX INCORPORATED AND SHOULD NOT BE USED WITHOUT WRITTEN PERMISSION | | | |