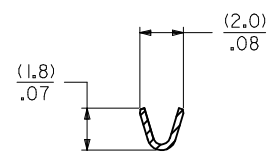
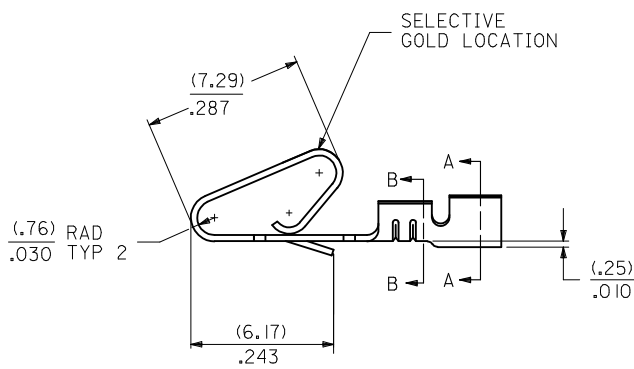
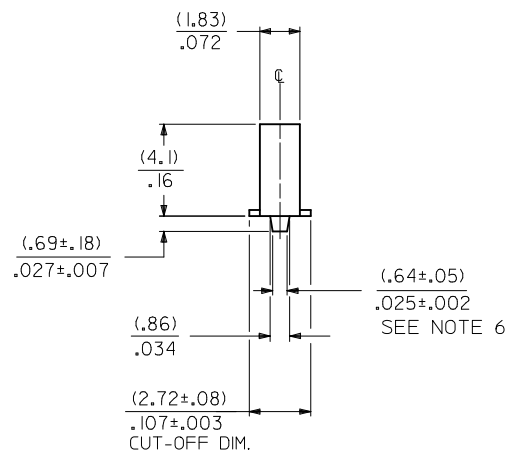


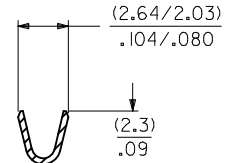
2578 - * - * * *
 MATERIAL CODE
 (.28)/.0106 THK
 BLANK=BRASS
 B=PHOS BRONZE
 WINDING SPEC.
 A=CHAIN, PER WINDING DETAIL "A"
 BLANK=CHAIN, PER WINDING DETAIL "B"
 L=LOOSE

PLATING CODE
 (PER SDES-88)
 (122) - OVERALL TIN: (0.00381)/.000150 MIN.
 OVER (0.00076)/.000030 MIN. NICKEL
 (154) - OVERALL TIN (0.00254)/.000100 MIN.
 OVER (0.00127)/.000050 MIN. NICKEL
 (224) - OVERALL MATTE TIN: (0.00508)/.000200 MIN.
 OVER (0.00127)/.000050 MIN. NICKEL
 (550) - SELECT GOLD: (0.00038)/.000015 MIN.
 OVERALL GOLD FLASH: (0.00005)/.000002 MIN.
 OVERALL NICKEL UNDERPLATE: (0.00076)/.000030 MIN.
 (555) - SELECT GOLD: (0.00038)/.000015 MIN.
 OVERALL NICKEL UNDERPLATE: (0.00076)/.000030 MIN.
 (558) - SELECT GOLD: (0.00076)/.000030 MIN.
 OVERALL GOLD FLASH: (0.00005)/.000002 MIN.
 OVERALL NICKEL UNDERPLATE: (0.00127)/.000050 MIN.
 (P909) - OVERALL HOT TIN DIP: (0.00254)/.000100 MIN

OPTIONS
 BLANK=AS SHOWN
 1 = WITH CAT EARS



SECTION B-B
 BACKGROUND OMITTED



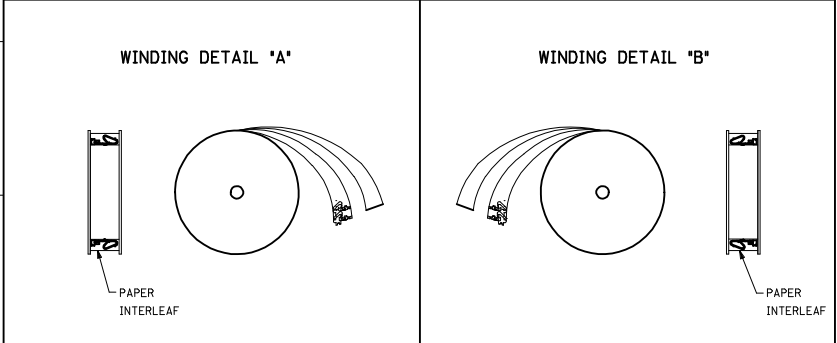
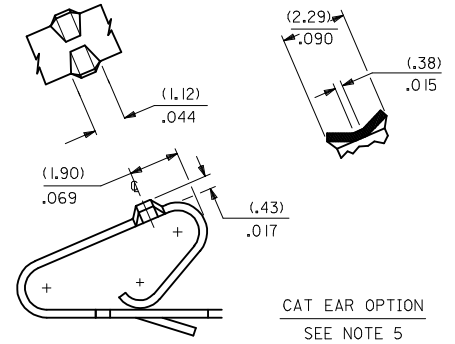
SECTION A-A
 BACKGROUND OMITTED

1. MATERIAL: SEE LEGEND
2. FINISH: SEE LEGEND
3. PRODUCT SPECIFICATION: PS-08-50
4. CRIMP ACCEPTS 22 TO 26 GA. WIRE WITH (1.65)/0.65 MAX INSULATION DIA.
5. DIMENSIONS GIVEN ACROSS CENTERLINES ARE SYMMETRICAL ABOUT THOSE CENTERLINES WITHIN HALF THE TOTAL TOLERANCE.
6. OPTIONAL DESIGN (.86±.05)/.034±.002
7. THIS PART CONFORMS TO CLASS B REQUIREMENTS OF COSMETIC SPECIFICATION PS-45499-002

ADD WINDING VIEW EC NO: UCP2014-4131 DRW:MKIPPER 2014/04/07 CHKD:NGUYEN 2014/04/07 APPR:FSMITH 2014/04/21	QUALITY SYMBOLS	GENERAL TOLERANCES (UNLESS SPECIFIED)	DIMENSION STYLE	SCALE	DESIGN UNITS	THIRD ANGLE PROJECTION
	▽=0	mm INCH	MM/IN	---	INCH	☉
	▽=0	4 PLACES ± --- ± ---	DRAWN BY PEREZ/AR	DATE 01/29/87	TITLE	CRIMP TERMINAL (3.96)/.156 CENTERS 22 TO 26 GA WIRE
	▽=0	3 PLACES ± --- ±.010	CHECKED BY PATEL	DATE 01/29/87	molex	
REV	DESCRIPTION	ANGULAR ±1/2°	MATERIAL NO.	DOCUMENT NO.		SHEET NO.
X1		DRAFT WHERE APPLICABLE MUST REMAIN WITHIN DIMENSIONS	SEE CHART	SD-2578	1 OF 2	

GENERAL TOLERANCES (UNLESS SPECIFIED)		DIMENSION STYLE	SCALE	DESIGN UNITS	THIRD ANGLE PROJECTION
mm INCH	MM/IN	---	INCH	☉	
4 PLACES ± --- ± ---	DRAWN BY PEREZ/AR	DATE 01/29/87	TITLE	CRIMP TERMINAL (3.96)/.156 CENTERS 22 TO 26 GA WIRE	
3 PLACES ± --- ±.010	CHECKED BY PATEL	DATE 01/29/87	molex		
2 PLACES ± 0.25 ±.014	APPROVED BY FSMITH	DATE 2014/04/21	SD-2578		
1 PLACE ± 0.36 ± ---					
0 PLACE ± --- ± ---					
ANGULAR ±1/2°	MATERIAL NO.	DOCUMENT NO.	SHEET NO.		
DRAFT WHERE APPLICABLE MUST REMAIN WITHIN DIMENSIONS	SEE CHART	SD-2578	1 OF 2		
THIS DRAWING CONTAINS INFORMATION THAT IS PROPRIETARY TO MOLEX. INCORPORATED AND SHOULD NOT BE USED WITHOUT WRITTEN PERMISSION					

2578-(****)*		2578-B-(****)*	
PART NO.	ENG. NO.	PART NO.	ENG. NO.
08-50-0107	2578-(P909)	08-50-0133	2578-B-(P909)
08-50-0108	2578-(P909)L	08-50-0134	2578-B-(P909)L
08-50-0111	2578-(154)	08-65-0116	2578-B-(555)
08-50-0112	2578-(154)L	08-65-0117	2578-B-(555)L
08-56-0107	2578-(550)	08-60-0003	2578-B-(122)
08-56-0108	2578-(550)L	08-60-0004	2578-B-(122)L
08-55-0105	2578-(555)	08-65-0110	2578-B-(558)
08-55-0106	2578-(555)L	08-65-0111	2578-B-(558)L
08-50-0061	2578-(224)	08-58-0125	2578-B-(550)
08-50-0062	2578-(224)L	08-58-0126	2578-B-(550)L
08-55-0137	2578-(558)A		
	2578-(558)L		
08-50-0018	2578-(154)		
08-50-0019	2578-(154)L		
08-55-0123	2578-(558)		
	2578-(558)L		



SEE SHEET 1 EC NO: UCP2014-4131 DRAWN BY: DRWIN/KIPPER 2014/04/07 CHECKED BY: CHKD:NGUYEN 2014/04/07 APPR:FSMITH 2014/04/21	QUALITY SYMBOLS 	GENERAL TOLERANCES (UNLESS SPECIFIED) <table border="1"> <thead> <tr> <th></th> <th>mm</th> <th>INCH</th> </tr> </thead> <tbody> <tr><td>4 PLACES</td><td>± .---</td><td>± .---</td></tr> <tr><td>3 PLACES</td><td>± .---</td><td>± .010</td></tr> <tr><td>2 PLACES</td><td>± 0.25</td><td>± .014</td></tr> <tr><td>1 PLACE</td><td>± 0.36</td><td>± .---</td></tr> <tr><td>0 PLACE</td><td>± .---</td><td>± .---</td></tr> </tbody> </table>		mm	INCH	4 PLACES	± .---	± .---	3 PLACES	± .---	± .010	2 PLACES	± 0.25	± .014	1 PLACE	± 0.36	± .---	0 PLACE	± .---	± .---	DIMENSION STYLE MM/IN DRAWN BY: PEREZ/AR DATE: 01/29/87 CHECKED BY: PATEL DATE: 01/29/87 APPROVED BY: FSMITH DATE: 2014/04/21	SCALE: --- DESIGN UNITS: INCH THIRD ANGLE PROJECTION	CRIMP TERMINAL (3.96)/.156 CENTERS 22 TO 26 GA WIRE
		mm	INCH																				
	4 PLACES	± .---	± .---																				
	3 PLACES	± .---	± .010																				
2 PLACES	± 0.25	± .014																					
1 PLACE	± 0.36	± .---																					
0 PLACE	± .---	± .---																					
	ANGULAR ±1/2° DRAFT WHERE APPLICABLE MUST REMAIN WITHIN DIMENSIONS	MATERIAL NO. SEE CHART	DOCUMENT NO. SD-2578	SHEET NO. 2 OF 2																			
SIZE: C THIS DRAWING CONTAINS INFORMATION THAT IS PROPRIETARY TO MOLEX INCORPORATED AND SHOULD NOT BE USED WITHOUT WRITTEN PERMISSION																							