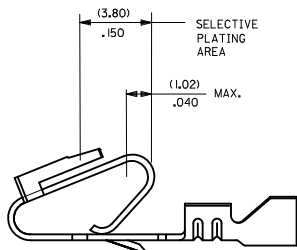
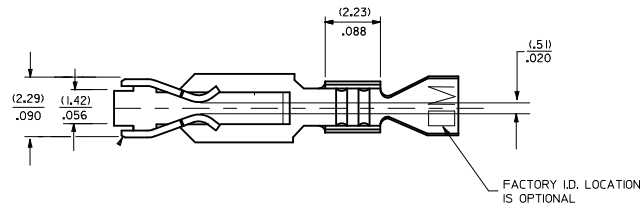
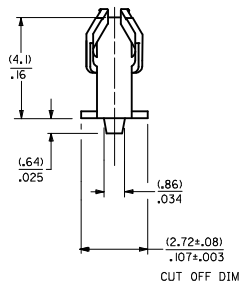


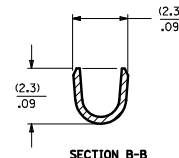
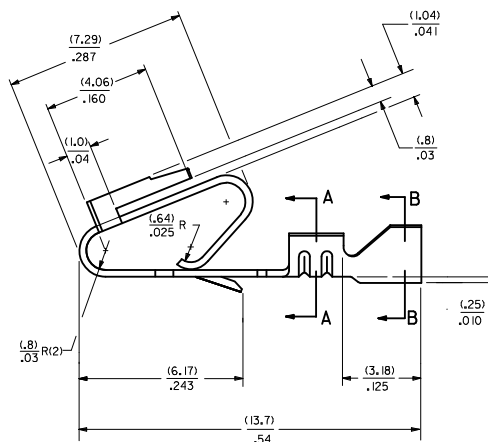
- NOTES:
 1. MATERIAL: SEE LEGEND
 2. FINISH: SEE LEGEND
 3. PRODUCT SPECIFICATION: PS-40-02
 4. DIMENSIONS GIVEN ACROSS CENTERLINES ARE SYMMETRICAL ABOUT THOSE CENTERLINES WITHIN HALF THE TOTAL TOLERANCE.
 5. CRIMP FOR 22 TO 26 GA. WIRE WITH MAX. INSULATION DIA. OF (1.65)/.065
 6. THIS PRODUCT CONFORMS TO CLASS B REQUIREMENTS OF COSMETIC SPECIFICATION PS-45499-002.



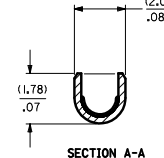
SELECTIVE PLATING AREA



CUT OFF DIM



SECTION B-B

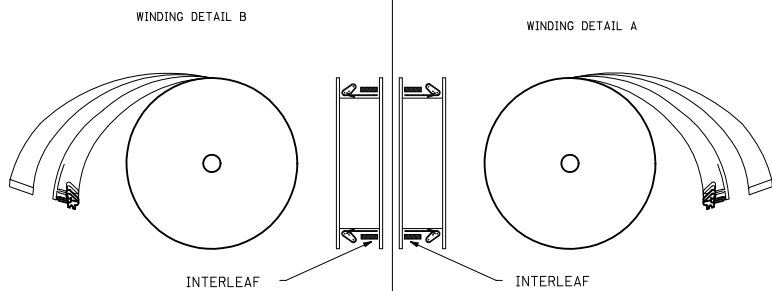


SECTION A-A

MAT'L: (.27)/.0106 THK
 BLANK=BRASS
 A=PHOS. BRONZE
 FORM
 BLANK= CHAIN PER DETAIL B
 A=CHAIN PER DETAIL A
 L= LOOSE

PLATING PER SDES- 88

- (909) - HOT TIN DIP: (0.00254)/.000100 MIN.
- (558) - SELECT GOLD: (0.00076)/.000030 MIN.
 OVERALL GOLD FLASH: (0.00005)/.000002 MIN.
 OVERALL NICKEL UNDERPLATE: (0.00127)/.000050 MIN.
- (561) - SELECT GOLD: (0.00076)/.000030 MIN.
 OVERALL NICKEL UNDERPLATE: (0.00127)/.000050 MIN.
- (555) - SELECT GOLD: (0.00038)/.000015 MIN.
 OVERALL NICKEL UNDERPLATE: (0.00076)/.000030 MIN.



INTERLEAF

INTERLEAF

REMOVE P/IN'S IEC NO: UCP2002-1821 DRAWN/MSTR/STROH 2012/01/04 CHKD/KK/PPER 2012/01/04 APPR/FSM/TH 2012/02/02	QUALITY SYMBOLS	GENERAL TOLERANCES (UNLESS SPECIFIED)	DIMENSION STYLE	SCALE	DESIGN UNITS	THIRD ANGLE PROJECTION	
	∇=0 ∇=0 ∇=0	mm INCH 4 PLACES ± --- ± --- 3 PLACES ± --- ± .010 2 PLACES ± 0.25 ± .014 1 PLACE ± 0.36 ± --- ANGULAR ±1/2°	MM/IN	---	INCH	DRAWN BY DATE JJS 12/03/187 CHECKED BY DATE PATEL 12/03/187 APPROVED BY DATE LENZ 12/03/187	TITLE TRIFURCON TERMINAL CRIMP TYPE, .156 CENTERS 22 TO 26 AWG
	DRAFT WHERE APPLICABLE MUST REMAIN WITHIN DIMENSIONS	MATERIAL NO.	DOCUMENT NO.	MOLEX INCORPORATED SD-7258			
	SIZE D	THIS DRAWING CONTAINS INFORMATION THAT IS PROPRIETARY TO MOLEX INCORPORATED AND SHOULD NOT BE USED WITHOUT WRITTEN PERMISSION			SHEET NO. 1 OF 2		

7258-(*)*

7258-A(*)*

PART NO.	ENG. NO.	PART NO.	ENG. NO.	PART NO.	ENG. NO.	PART NO.	ENG. NO(SUFFIX ONLY)	PART NO.	ENG. NO(SUFFIX ONLY)	VOID CKT.	PART NO.	ENG. NO(SUFFIX ONLY)	VOID CKT.
08-50-0183	7258-(P909)	08-04-0001	7258-A(999)										
08-50-0185	7258-(P909)L	08-65-0121	7258-A(P56 I)	ES-276-P56 I									
08-50-0283	7258-(P909)A	08-65-0122	7258-A(P56 I)L										
		08-56-0123	7258-A(P558)	MAKE FROM									
		08-56-0124	7258-A(P558)L	7258-A(P56 I)									
			7258-A(56 I)										
			7258-A(56 I)L										
		08-52-0124	7258-A(P909)										
		08-52-0125	7258-A(P909)L										
		08-65-0126	7258-A(P555)	ES-276-P555									
		08-65-0127	7258-A(P555)L										

COLUMN NO. 1	CON'T. IN COLUMN NO.	SHEET NO.	COLUMN NO. 2	CON'T. IN COLUMN NO.	SHEET NO.	COLUMN NO. 3	CON'T. IN COLUMN NO.	SHEET NO.	COLUMN NO. 4	CON'T. IN COLUMN NO.	SHEET NO.	COLUMN NO. 4	CON'T. IN COLUMN NO.	SHEET NO.
--------------	----------------------	-----------	--------------	----------------------	-----------	--------------	----------------------	-----------	--------------	----------------------	-----------	--------------	----------------------	-----------

SEE SHEET 1 IEC NO. UCP2012-1821 U DRAWN BY: 2012/01/04 CHYD/KK/PPR 2012/01/05 APPR:FSM/TH 2012/02/02 REV DESCRIPTION	QUALITY SYMBOLS	GENERAL TOLERANCES (UNLESS SPECIFIED)	DIMENSION STYLE	SCALE	DESIGN UNITS	THIRD ANGLE PROJECTION
	▽=0	4 PLACES ± mm ± INCH	MM ONLY	---	INCH	☉
	▽=0	3 PLACES ± mm ± INCH				
	▽=0	2 PLACES ± mm ± INCH				
		ANGULAR ±1/2°				
	DRAFT WHERE APPLICABLE MUST REMAIN WITHIN DIMENSIONS		MATERIAL NO. SEE CHART		DOCUMENT NO. SD-7258	
			SIZE D	THIS DRAWING CONTAINS INFORMATION THAT IS PROPRIETARY TO MOLEX INCORPORATED AND SHOULD NOT BE USED WITHOUT WRITTEN PERMISSION		

TRIFURCON TERMINAL CRIMP TYPE

MOLEX INCORPORATED

SHEET NO. 2 OF 2