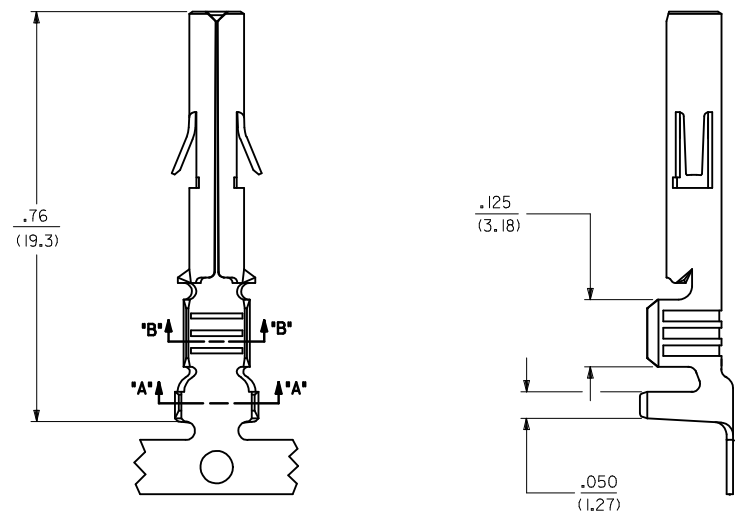
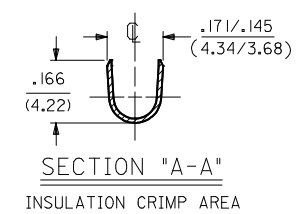
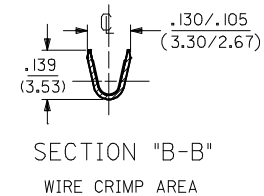
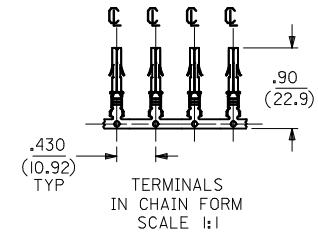
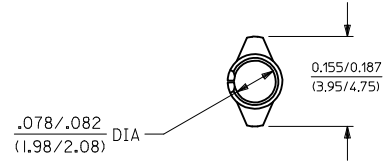
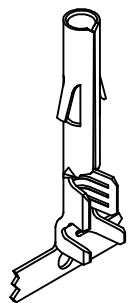


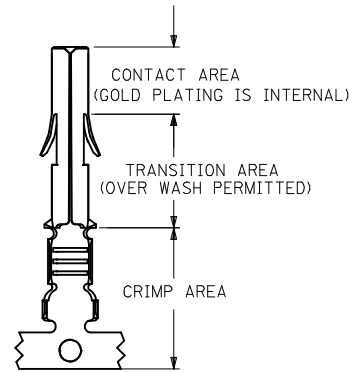
SOCKET TERMINAL
42024-***



SEE SHEET 2 FOR CHART, MATERIAL, PLATING, NOTES, AND CRIMP OPTIONS

DRAWING UPDATED EC NO: I2014-0115 2014/01/09 DRWN:SS06 CHKD: APPR:KPRASAD 2014/01/13 REV:	QUALITY SYMBOLS	GENERAL TOLERANCES (UNLESS SPECIFIED)		DIMENSION STYLE IN/MM		SCALE ---	DESIGN UNITS INCH	THIRD ANGLE PROJECTION
	▽=0	4 PLACES ± --- ± ---	mm	INCH	DRAWN BY SUDHIR	DATE 2004/09/27	TITLE	
	▽=0	3 PLACES ± --- ± .010			CHECKED BY KPRASAD	DATE 2004/09/27	TERMINAL, SOCKET 84/(2.13) DIA. SERIES	
	▽=0	2 PLACES ± 0.25 ± .015			APPROVED BY KPRASAD	DATE 2004/09/27		
		1 PLACE ± 0.38 ± ---			MATERIAL NO.		DOCUMENT NO.	SHEET NO.
		0 PLACE ± ±			SEE CHART SIZE A2		SD-42024-****	1 OF 2
ANGULAR ±1/2° DRAFT WHERE APPLICABLE MUST REMAIN WITHIN DIMENSIONS			THIS DRAWING CONTAINS INFORMATION THAT IS PROPRIETARY TO MOLEX INCORPORATED AND SHOULD NOT BE USED WITHOUT WRITTEN PERMISSION					

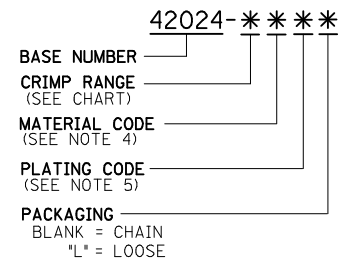
ENG. NO.	EDP NO.	FINISH (REF)	CONTACT AREA (REF)	CRIMP AREA (REF)	MATERIAL (REF)	WIRE SIZE	INSULATION DIA.	STATUS
42024-IA1	002-08-1001	SDES-88-P901	----	----	C26000	#14-#20 AWG	.060-.130	ACTIVE
42024-IAL	002-08-1002	SDES-88-P901	----	----	C26000	#14-#20 AWG	.060-.130	ACTIVE
42024-IB1	002-08-1003	SDES-88-P901	----	----	C51000	#14-#20 AWG	.060-.130	ACTIVE
42024-IBL	002-08-1004	SDES-88-P901	----	----	C51000	#14-#20 AWG	.060-.130	ACTIVE
42024-IA2	002-08-1005	SEE NOTE 5	.000030 MIN GOLD	.000100 MIN MATTE TIN	C26000	#14-#20 AWG	.060-.130	NOT TOOLED
42024-IA2L	002-08-1006	SEE NOTE 5	.000030 MIN GOLD	.000100 MIN MATTE TIN	C26000	#14-#20 AWG	.060-.130	NOT TOOLED
42024-IB2	002-08-1007	SEE NOTE 5	.000030 MIN GOLD	.000100 MIN MATTE TIN	C51000	#14-#20 AWG	.060-.130	NOT TOOLED
42024-IB2L	002-08-1008	SEE NOTE 5	.000030 MIN GOLD	.000100 MIN MATTE TIN	C51000	#14-#20 AWG	.060-.130	NOT TOOLED



PLATING REGIONS

APPLIES TO GOLD PLATED
TERMINALS ONLY

LEGEND:



NOTES:

- SOCKET TERMINALS FOR USE WITH THE .084/(2.13) SERIES HOUSINGS:
 - PLUG (42021-**) CAP (42022-**)
- SOCKET TERMINALS MATE WITH PIN TERMINALS: .084/(2.13) DIA. SERIES (42023-****).
- TERMINALS FINISHED IN CHAIN UNLESS SPECIFIED LOOSE. "L" SUFFIX INDICATES LOOSE FORM. (SEE TABLE)
- MATERIAL: .012/(0.30) THICK STRIP:
 - A = BRASS, #C26000, PER SMES-124-C7.
 - B = PHOSPHOR BRONZE, #C51000, PER SMES-124-E7.
- FINISH:
 - 1 = HOT TIN DIP 20 m.l./(.051 MICRONS) MINIMUM (PER SDES-88-P901).
 - 2 = 30 (M.I) / 0.75 MICRONS) MIN SELECT GOLD AND 100 (M.I) (2.50 MICRON) MIN SELECT TIN (MATTE) OVER 50 (M.I) (1.25 MICRONS) MIN NICKEL OVERALL
- CRIMP RANGE: SEE CHART.
- PRODUCT SPECIFICATION PS-42022-0001 APPLIES.

DRAWING UPDATED EC NO: 12014-0115 DRWN:SS06 CHKD: APPR:KPRASAD REV: G	2014/01/09 2014/01/13 DESCRIPTION	QUALITY SYMBOLS	GENERAL TOLERANCES (UNLESS SPECIFIED)	DIMENSION STYLE IN/MM	SCALE ---	DESIGN UNITS INCH	THIRD ANGLE PROJECTION																																		
		$\nabla=0$ $\nabla=0$ $\nabla=0$	<table border="1"> <thead> <tr> <th></th> <th>mm</th> <th>INCH</th> </tr> </thead> <tbody> <tr> <td>4 PLACES</td> <td>± .005</td> <td>± .0005</td> </tr> <tr> <td>3 PLACES</td> <td>± .005</td> <td>± .0005</td> </tr> <tr> <td>2 PLACES</td> <td>± .005</td> <td>± .0005</td> </tr> <tr> <td>1 PLACE</td> <td>± .005</td> <td>± .0005</td> </tr> <tr> <td>0 PLACE</td> <td>± .005</td> <td>± .0005</td> </tr> </tbody> </table>		mm	INCH	4 PLACES	± .005	± .0005	3 PLACES	± .005	± .0005	2 PLACES	± .005	± .0005	1 PLACE	± .005	± .0005	0 PLACE	± .005	± .0005	<table border="1"> <thead> <tr> <th>DRAWN BY</th> <th>DATE</th> <th>TITLE</th> </tr> </thead> <tbody> <tr> <td>SUDHIR</td> <td>2004/09/27</td> <td rowspan="2">TERMINAL, SOCKET 84/(2.13) DIA. SERIES</td> </tr> <tr> <td>CHECKED BY</td> <td>DATE</td> </tr> <tr> <td>KPRASAD</td> <td>2004/09/27</td> <td rowspan="2"> </td> </tr> <tr> <td>APPROVED BY</td> <td>DATE</td> </tr> <tr> <td>KPRASAD</td> <td>2004/09/27</td> <td> MATERIAL NO. SEE CHART </td> </tr> </tbody> </table>	DRAWN BY	DATE	TITLE	SUDHIR	2004/09/27	TERMINAL, SOCKET 84/(2.13) DIA. SERIES	CHECKED BY	DATE	KPRASAD	2004/09/27		APPROVED BY	DATE	KPRASAD	2004/09/27	MATERIAL NO. SEE CHART	<table border="1"> <thead> <tr> <th>DOCUMENT NO.</th> <th>SHEET NO.</th> </tr> </thead> <tbody> <tr> <td>SD-42024-****</td> <td>2 OF 2</td> </tr> </tbody> </table>	DOCUMENT NO.	SHEET NO.
	mm	INCH																																							
4 PLACES	± .005	± .0005																																							
3 PLACES	± .005	± .0005																																							
2 PLACES	± .005	± .0005																																							
1 PLACE	± .005	± .0005																																							
0 PLACE	± .005	± .0005																																							
DRAWN BY	DATE	TITLE																																							
SUDHIR	2004/09/27	TERMINAL, SOCKET 84/(2.13) DIA. SERIES																																							
CHECKED BY	DATE																																								
KPRASAD	2004/09/27																																								
APPROVED BY	DATE																																								
KPRASAD	2004/09/27	MATERIAL NO. SEE CHART																																							
DOCUMENT NO.	SHEET NO.																																								
SD-42024-****	2 OF 2																																								
DRAFT WHERE APPLICABLE MUST REMAIN WITHIN DIMENSIONS SIZE A 2 THIS DRAWING CONTAINS INFORMATION THAT IS PROPRIETARY TO MOLEX INCORPORATED AND SHOULD NOT BE USED WITHOUT WRITTEN PERMISSION																																									