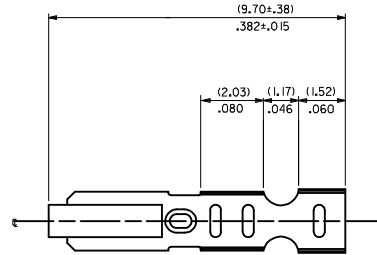
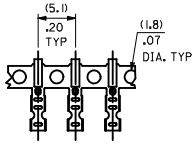
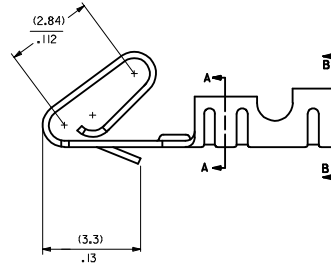
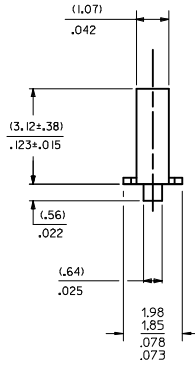
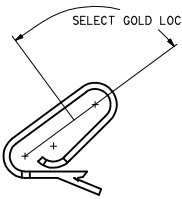


CARRIER VIEW

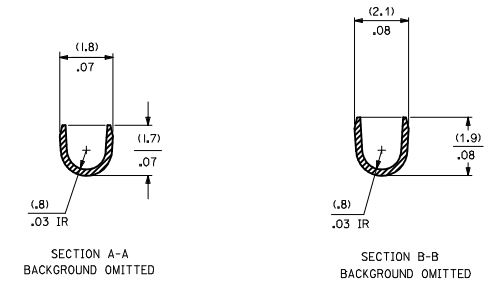
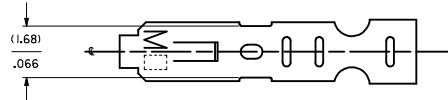
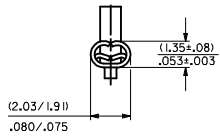


- NOTES:
- MATERIAL:
(0.20)/.008 THICK BRASS
 - FINISH:
122 - OVERALL TIN: (0.00381)/.000150 MIN. TIN OVER (0.00076)/.000030 MIN NICKEL
154 - OVERALL TIN: (0.00254)/.000100 MIN. TIN OVER (0.00127)/.000050 MIN NICKEL
P909 - OVERALL HOT TIN DIP: (0.00254)/.000100 MIN.
550 - SELECT GOLD: (0.000381)/.000015 MIN. OVERALL GOLD FLASH: (0.00005)/.000002 MIN. OVERALL NICKEL UNDERPLATE: (0.00076)/.000030 MIN.
555- SELECT GOLD (0.000381)/.000015 MIN. OVERALL NICKEL UNDERPLATE: (0.00076)/.000030 OVERALL GOLD FLASH: (0.00005)/.000002 MIN. OVERALL NICKEL UNDERPLATE: (0.00127)/.000050 MIN.
 - PRODUCT SPEC: PS-10-07
 - PACKAGING SPECIFICATION: LOOSE TERMINALS: PER FK-2759-001 CHAIN FORM TERMINALS: PER FK-2759-002
 - CRIMP IS FOR 22-30 GA WIRE WITH (1.57)/.062 DIA INSULATION MAX.
 - INSERTION FORCE OF TERMINAL INTO (2.54)/.100 CENTERLINE CONNECTOR IS 2.5 LBS. MAX
 - TERMINAL RETENTION IN HOUSING IS 26.7N / 6LBS MIN. WHEN PULLED AT THE RATE OF (25.4MM) / 1 INCH PER MINUTE.
 - DIMENSIONS GIVEN ACROSS CENTERLINES ARE SYMMETRICAL ABOUT THOSE CENTERLINES WITHIN HALF THE TOTAL TOLERANCE.
 - THIS PART CONFORMS TO CLASS B REQUIREMENTS OF COSMETIC SPECIFICATION PS-45499-002.

SELECT GOLD LOCATION



CRIMP DETAIL



SECTION A-A BACKGROUND OMITTED

SECTION B-B BACKGROUND OMITTED

CRIMPED TERMINAL 2759-(P909)C IS USED WITHOUT WIRE AND IS INSERTED INTO HOUSING TO PROVIDE TENSION WHEN ASSEMBLED TO HEADERS DURING SHIPMENT.

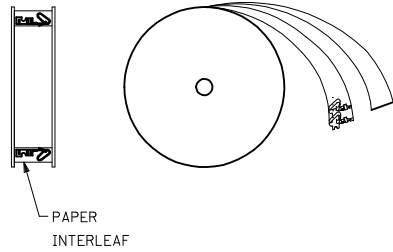
- 2759-(***)*
- FORM
 - L=LOOSE
 - C=LOOSE CRIMPED
 - A=CHAIN, PER WINDING DETAIL 'A'
 - B=CHAIN, PER WINDING DETAIL 'B'
 - PLATING
 - SEE NOTE 2

ADD WINDING DETAIL EEC NO. UCF2014-4131 DRAWN BY: CHYKONGUEN CHECKED BY: CHYKONGUEN APPR:FSMTH DATE: 2014/04/07 DATE: 2014/04/08 DATE: 2014/04/21	QUALITY SYMBOLS	GENERAL TOLERANCES (UNLESS SPECIFIED)	DIMENSION STYLE	SCALE	DESIGN UNITS	THIRD ANGLE PROJECTION	
	∇=0 ∇=0 ∇=0	mm INCH 4 PLACES ±.010 3 PLACES ±.025 ±.014 2 PLACES ±.036 ±.014 1 PLACE ±.036 ±.014 0 PLACE ±.036 ±.014	MM/IN	DRAWN BY: SAMIEC CHECKED BY: PATEL APPROVED BY: FSMITH DATE: 07/28/87 DATE: 07/28/87 DATE: 2012/03/20		INCH	CRIMP TERMINAL 22-30 GA WIRE
	ANGULAR ±1/2° DRAFT WHERE APPLICABLE MUST REMAIN WITHIN DIMENSIONS	MATERIAL NO. SEE CHART SIZE D	DOCUMENT NO. SD-2759	SHEET NO. 1 OF 2			

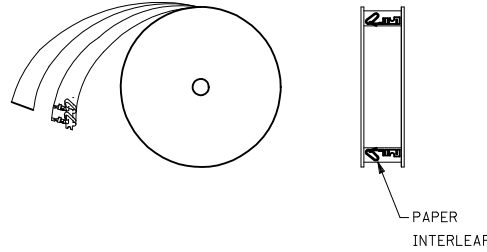
2759-(***)*

PART NO.	ENG. NO.
08-55-0101	2759-(555)B
08-55-0102	2759-(555)L
08-55-0126	2759-(555)A
08-56-0109	2759-(550)B
08-56-0110	2759-(550)L
08-50-0113	2759-(P909)B
08-50-0114	2759-(P909)L
08-50-0124	2759-(P909)C
08-51-0108	2759-(122)B
	2759-(122)L
08-50-0274	2759-(P909)B
08-50-0273	2759-(P909)A
08-55-0130	2759-(558)B
08-55-0131	2759-(558)L
08-50-0160	2759-(154)L
08-50-0159	2759-(154)B

WINDING DETAIL "A"



WINDING DETAIL "B"



SEE SHEET 1 SEC NO: UCP2014-431 DRAWN BY: DRYNANKIPPER 2014/04/07 CHECKED BY: CHYKONGUYEN 2014/04/08 APPROVED BY: APPR:FSMITH 2014/04/21	QUALITY SYMBOLS ▽=0 ▽=0 ▽=0	GENERAL TOLERANCES (UNLESS SPECIFIED) <table border="1"> <thead> <tr> <th></th> <th>mm</th> <th>INCH</th> </tr> </thead> <tbody> <tr> <td>4 PLACES</td> <td>±.005</td> <td>±.0005</td> </tr> <tr> <td>3 PLACES</td> <td>±.008</td> <td>±.0010</td> </tr> <tr> <td>2 PLACES</td> <td>±0.25</td> <td>±.014</td> </tr> <tr> <td>1 PLACE</td> <td>±0.36</td> <td>±.014</td> </tr> <tr> <td>0 PLACE</td> <td>±.008</td> <td>±.0010</td> </tr> </tbody> </table> ANGULAR ±1/2° DRAFT WHERE APPLICABLE MUST REMAIN WITHIN DIMENSIONS		mm	INCH	4 PLACES	±.005	±.0005	3 PLACES	±.008	±.0010	2 PLACES	±0.25	±.014	1 PLACE	±0.36	±.014	0 PLACE	±.008	±.0010	DIMENSION STYLE MM/IN DRAWN BY: SAMIEC DATE: 07/28/87 CHECKED BY: DATE: PATEL 07/28/87 APPROVED BY: DATE: FSMITH 2012/03/20	SCALE 1:1 DESIGN UNITS INCH THIRD ANGLE PROJECTION	TITLE CRIMP TERMINAL 22-30 GA WIRE	MATERIAL NO. SEE CHART SIZE D	DOCUMENT NO. SD-2759	SHEET NO. 2 OF 2
		mm	INCH																							
	4 PLACES	±.005	±.0005																							
3 PLACES	±.008	±.0010																								
2 PLACES	±0.25	±.014																								
1 PLACE	±0.36	±.014																								
0 PLACE	±.008	±.0010																								
THIS DRAWING CONTAINS INFORMATION THAT IS PROPRIETARY TO MOLEX INCORPORATED AND SHOULD NOT BE USED WITHOUT WRITTEN PERMISSION																										
moxlex																										