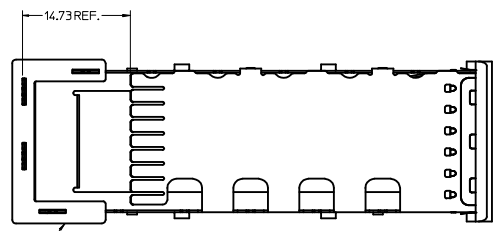
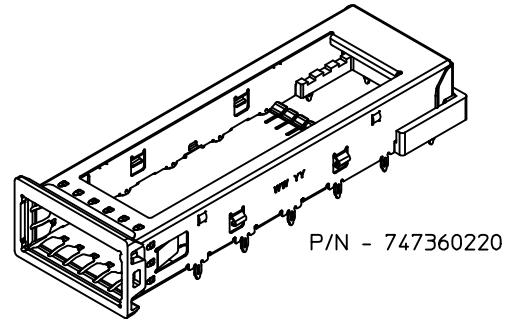
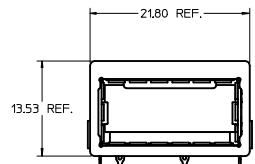
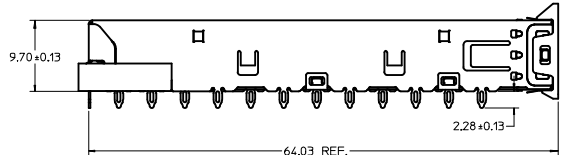
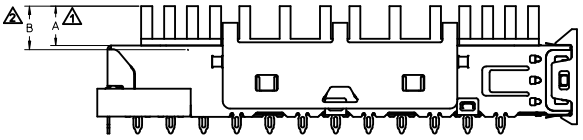


HEATSINK SINK AND CLIP ARE OPTIONAL  
SEE CHART FOR HEATSINK OPTIONS  
CUSTOM HEATSINKS ARE AVAILABLE



COMPLIANT EMI GASKET  
(DARK COLORED)

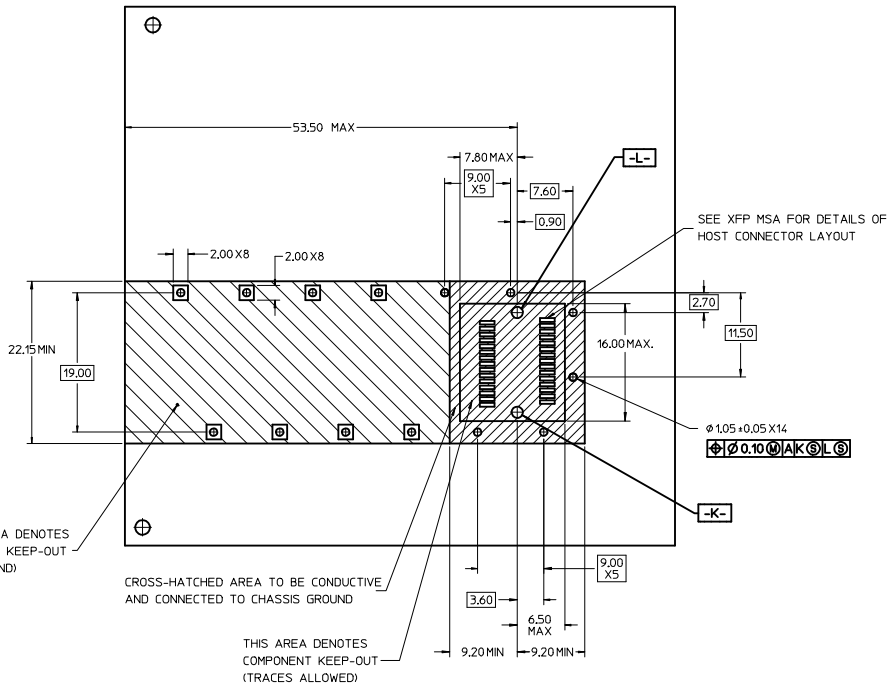
SHOWN WITH OPTIONAL HEATSINK (SAN) AND CLIP



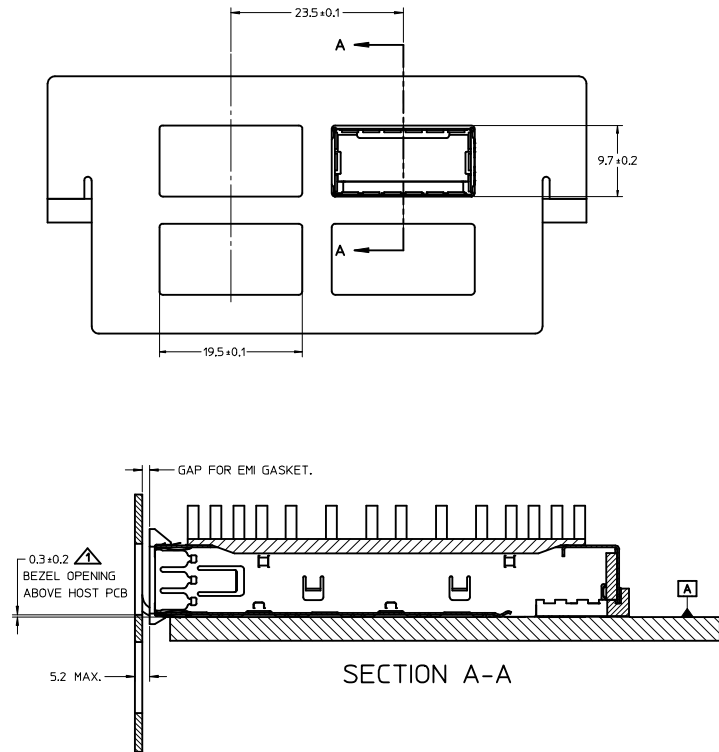
- ▲ MAXIMUM HEIGHT OF HEATSINK WITH MODULE INSERTED
- ▲ OVERALL HEIGHT OF HEATSINK
- 3. OTHER HEATSINK DESIGNS ARE AVAILABLE INCLUDING CUSTOM DESIGNS

PART NUMBER FOR XFP CAGE ASSEMBLY & PARTS					
P/N	DIM A	DIM B	DESCRIPTION	POWER LEVEL	THERMAL RESISTANCE @200 LFM
747360220	N/A	N/A	XFP CAGE WITH NO HEATSINK OR CLIP	N/A	N/A
747360221	4.0	4.2	XFP CAGE WITH PCI HEATSINK	UP TO 1.5W	<18.0 C/W
747360222	6.3	6.5	XFP CAGE WITH SAN HEATSINK (SHOWN)	UP TO 2.5W	<11.5 C/W
747360223	13.3	13.5	XFP CAGE WITH TALL HEATSINK	UP TO 3.5W	<8.0 C/W
747360230	N/A	N/A	HEATSINK CLIP ONLY	N/A	N/A
747360240	N/A	N/A	PCI HEATSINK ONLY	UP TO 1.5W	<18.0 C/W
747360241	N/A	N/A	SAN HEATSINK ONLY	UP TO 2.5W	<11.5 C/W
747360242	N/A	N/A	TALL HEATSINK ONLY	UP TO 3.5W	<8.0 C/W

<b>SEE REVISION TABLE</b> IEC NO: CPG2016-1906 DRAWN BY: DRWNEWANG07 CHECKED BY: CHKDRCHEN08 APPROVED BY: APPRDRCHEN08 DATE: 2015/11/05 DATE: 2015/11/05 DATE: 2015/11/05	QUALITY SYMBOLS ▽=0 ▽=0 ▽=0	GENERAL TOLERANCES (UNLESS SPECIFIED) DIMENSION STYLE: MM ONLY SCALE: 3:1 DESIGN UNITS: METRIC THIRD ANGLE PROJECTION	DRAWN BY: DATE: KLLLOYD 2004/05/14 CHECKED BY: DATE: BRUSSELL 2004/08/05 APPROVED BY: DATE: RMAHMOOD 2010/11/09	TITLE: XFP CAGE ASSEMBLY	
	DIMENSIONS: 4 PLACES ±--- ±---, 3 PLACES ±--- ±---, 2 PLACES ±0.10 ±---, 1 PLACE ±0.25 ±---, 0 PLACE ± ±	ANGULAR ± 1 °	MATERIAL NO. SEE CHART	DOCUMENT NO. SD-74736-220	SHEET NO. 1 OF 3
	DRAFT WHERE APPLICABLE MUST REMAIN WITHIN DIMENSIONS	SIZE D	THIS DRAWING CONTAINS INFORMATION THAT IS PROPRIETARY TO MOLEX INCORPORATED AND SHOULD NOT BE USED WITHOUT WRITTEN PERMISSION		
	molex				



$\Delta$  FOR PCI APPLICATIONS RECOMMENDED DIMENSION IS 0.4 ± 0.1



<b>SEE REVISION TABLE</b> IEC NO: CPG2016-1906 DRAWN BY: 2015/11/05 CHYORCHEN07 CHECKED BY: 2015/11/05 CHYORCHEN08 APPROVED BY: 2015/11/05 CHYORCHEN08	QUALITY SYMBOLS	GENERAL TOLERANCES (UNLESS SPECIFIED)	DIMENSION STYLE	SCALE	DESIGN UNITS	THIRD ANGLE PROJECTION	
	▽=0 ▽=0 ▽=0	mm INCH 4 PLACES ± ± 3 PLACES ± ± 2 PLACES ±0.10 ± 1 PLACE ±0.25 ± 0 PLACE ± ±	MM ONLY	3:1	METRIC	DRAWN BY: KLLOYD CHECKED BY: BRUSSELL APPROVED BY: RYAHMOOD DATE: 2004/05/14 DATE: 2004/08/05 DATE: 2010/11/09	TITLE XFP CAGE ASSEMBLY
	ANGULAR ± 1 ° DRAFT WHERE APPLICABLE MUST REMAIN WITHIN DIMENSIONS	MATERIAL NO: SEE SHEET 1	DOCUMENT NO: SD-74736-220	SHEET NO. 2 OF 3		THIS DRAWING CONTAINS INFORMATION THAT IS PROPRIETARY TO MOLEX INCORPORATED AND SHOULD NOT BE USED WITHOUT WRITTEN PERMISSION	
		SIZE D					

**molex**

20 19 18 17 16 15 14 13 12 11 10 9 8 7 6 5 4 3 2 1

DATE	REV	DESCRIPTION
2015/11/05	G	SHEET 1: H15: CHANGED DIM 2.28 REF. TO DIM 2.28 +/-0.13. H19: CHANGED DIM 9.70 REF. TO DIM 9.70 +/-0.13.

<b>SEE REVISION TABLE</b> IEC NO: CPG2016-1906 G DRAWN: WANG07 2015/11/05 CHYKORCHEN08 2015/11/05 APPR: RCHEN08 2015/11/05 REV DESCRIPTION	QUALITY SYMBOLS	GENERAL TOLERANCES (UNLESS SPECIFIED)	DIMENSION STYLE	SCALE	DESIGN UNITS	THIRD ANGLE PROJECTION	
	▽=0	mm INCH	MM ONLY	1:1	METRIC	☉	
	▽=0	4 PLACES ±	4 PLACES ±	DRAWN BY DATE	TITLE		
	▽=0	3 PLACES ±	3 PLACES ±	KLLOYD 2004/05/14	XFP CAGE ASSEMBLY		
	2 PLACES ±0.10	2 PLACES ±	CHECKED BY DATE				
	1 PLACE ±0.25	1 PLACE ±	BRUSSELL 2004/08/05				
	0 PLACE ±	0 PLACE ±	APPROVED BY DATE				
			RAHMOOD 2010/11/09				
			MATERIAL NO.	DOCUMENT NO.			
			SEE SHEET 1	SD-74736-220			
			SIZE D	THIS DRAWING CONTAINS INFORMATION THAT IS PROPRIETARY TO MOLEX INCORPORATED AND SHOULD NOT BE USED WITHOUT WRITTEN PERMISSION			



19 18 17 16 15 14 13 12 11 10 9 8 7 6 5 4 3 2 1