

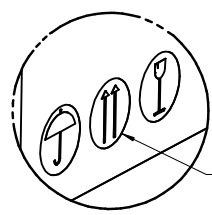
PRODUCT ID LABEL
(1) PER REEL

SEE DETAIL 1

SHIPPER ID LABEL
(1-2)/CARTON AS REQUIRED

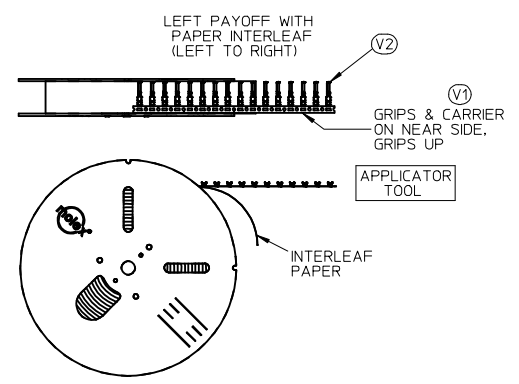
PALLET 0313016630
635 mm X 635 mm
(26" X 26")
(SEE NOTE 6)

CUSTOMER COPY



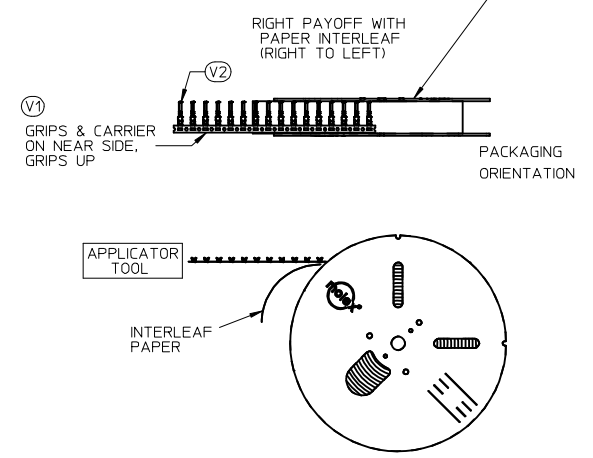
DETAIL 1
SCALE 1:1.33

**PAYOFF
DIRECTION D**



PLACE PRODUCT ID LABEL ON THIS SIDE TO INDICATE
THE PREFERRED PACKAGING ORIENTATION

**PAYOFF
DIRECTION B**



- NOTES:**
1. NUMBER OF TERMINALS PER REEL: SEE TABLE (SHEET 2)
 2. STANDARD PACK QUANTITY (SPQ): SEE TABLE (SHEET 2)
 3. NUMBER OF REELS PER CARTON: SEE TABLE (SHEET 2)
 4. SPLICING: NO BREAKS, MAXIMUM 1 WELD PER REEL
 5. TO MINIMIZE STRESS ON TERMINALS, REELS SHOULD ALWAYS BE SHIPPED ON PALLETS WITH THE REELS LAYING FLAT AS SHOWN.
 6. PLACE CARTONS ON PALLET WITH ARROWS POINTING UP PER DETAIL 1
 7. FOR INTERNAL COPY SEE: PK-31301-053

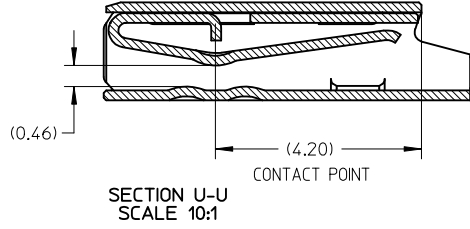
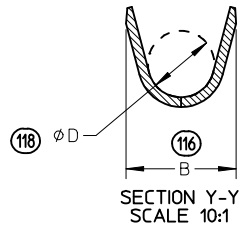
SPO CORRECTION EC NO: UAU2015-0955 DRAWN: PHELPS 2014/12/19 CHKD: APPR: JNORTHRO 2015/01/26 REV: 4	QUALITY SYMBOLS ▽=0 ▽=0	GENERAL TOLERANCES (UNLESS SPECIFIED) <table border="1"> <tr> <th></th> <th>mm</th> <th>INCH</th> </tr> <tr> <td>4 PLACES</td> <td>± ---</td> <td>± ---</td> </tr> <tr> <td>3 PLACES</td> <td>± ---</td> <td>± ---</td> </tr> <tr> <td>2 PLACES</td> <td>± ---</td> <td>± ---</td> </tr> <tr> <td>1 PLACE</td> <td>± ---</td> <td>± ---</td> </tr> </table> ANGULAR ± 1 °		mm	INCH	4 PLACES	± ---	± ---	3 PLACES	± ---	± ---	2 PLACES	± ---	± ---	1 PLACE	± ---	± ---	DIMENSION STYLE MM ONLY DRAWN BY: PHELPS DATE: 2012/10/24 CHECKED BY: DATE:	SCALE: 1:10 DESIGN UNITS: METRIC THIRD ANGLE PROJECTION
		mm	INCH																
	4 PLACES	± ---	± ---																
	3 PLACES	± ---	± ---																
2 PLACES	± ---	± ---																	
1 PLACE	± ---	± ---																	
DRAFT WHERE APPLICABLE MUST REMAIN WITHIN DIMENSIONS	APPROVED BY: JNORTHRO DATE: 2012/11/26 MATERIAL NO.: SEE TABLE SIZE: C	TITLE: CTX PACKAGING SPEC GEN. MKT. PRODUCT CUSTOMER COPY MOLEX MOLEX INCORPORATED DOCUMENT NO.: SD-31301-053	SHEET NO.: 1 OF 2																
THIS DRAWING CONTAINS INFORMATION THAT IS PROPRIETARY TO MOLEX INCORPORATED AND SHOULD NOT BE USED WITHOUT WRITTEN PERMISSION																			

PACKAGING DATA											
PRODUCT DESCRIPTION	CTX 64				CTX 150			CTX 280 SEALED			
PRODUCT P/N SERIES	0348030*** 0348031*** 0348032***		0348033*** 0348035***		034805****			034808****			
GRIP CODE	S	L	S	L	S	M	L	VS	S	M	L
PART WT (Kg/1000)	.1552	.1642	.126	.126	.3070	.3270	.3470	.6596	.6886	.7106	.7332
STAND PACK QTY (SPQ)	60000	60000	60000	60000	35000	30000	25000	10000	10000	10000	10000
QTY/REEL	10000	10000	10000	10000	7000	6000	5000	2000	2000	2000	2000
REELS/SHIPPER CARTON	6	6	6	6	5	5	5	5	5	5	5
CARTONS/PALLET (MAX)	5	5	5	5	5	5	5	5	5	5	5
FILLED CARTON WT (Kg)	14.83	15.37	TBD	TBD	15.64	14.70	13.57	11.5	11.8	12.0	12.2
FLANGE DIAMETER (MM)	610	610	610	610	610	610	610	610	610	610	610

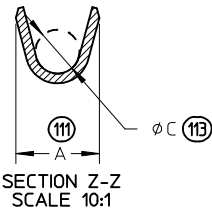
CUSTOMER COPY

SPQ CORRECTION EC NO: UAU2015-0955 DRWN:PPHELPS 2014/12/19 CHKD: APPR: JNORTHRO 2015/01/26 REV: 4	QUALITY SYMBOLS	GENERAL TOLERANCES (UNLESS SPECIFIED) <table border="1"> <tr> <th></th> <th>mm</th> <th>INCH</th> </tr> <tr> <td>4 PLACES</td> <td>± .005</td> <td>± .0004</td> </tr> <tr> <td>3 PLACES</td> <td>± .003</td> <td>± .0003</td> </tr> <tr> <td>2 PLACES</td> <td>± .002</td> <td>± .0002</td> </tr> <tr> <td>1 PLACE</td> <td>± .001</td> <td>± .0001</td> </tr> </table> ANGULAR ± 1 °		mm	INCH	4 PLACES	± .005	± .0004	3 PLACES	± .003	± .0003	2 PLACES	± .002	± .0002	1 PLACE	± .001	± .0001	DIMENSION STYLE MM ONLY	SCALE 1:15	DESIGN UNITS METRIC	THIRD ANGLE PROJECTION
			mm	INCH																	
	4 PLACES		± .005	± .0004																	
	3 PLACES		± .003	± .0003																	
2 PLACES	± .002	± .0002																			
1 PLACE	± .001	± .0001																			
DRAWN BY PPHELPS DATE 2012/10/24 CHECKED BY DATE	TITLE CTX PACKAGING SPEC GEN. MRKT. PRODUCT CUSTOMER COPY																				
APPROVED BY JNORTHRO DATE 2012/11/26	MOLEX INCORPORATED DOCUMENT NO. SD-31301-053																				
DRAFT WHERE APPLICABLE MUST REMAIN WITHIN DIMENSIONS	SIZE C	THIS DRAWING CONTAINS INFORMATION THAT IS PROPRIETARY TO MOLEX INCORPORATED AND SHOULD NOT BE USED WITHOUT WRITTEN PERMISSION	SHEET NO. 2 OF 2																		

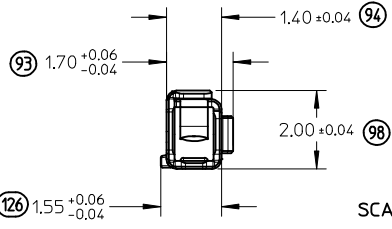
TIN CONTACT SHAPE



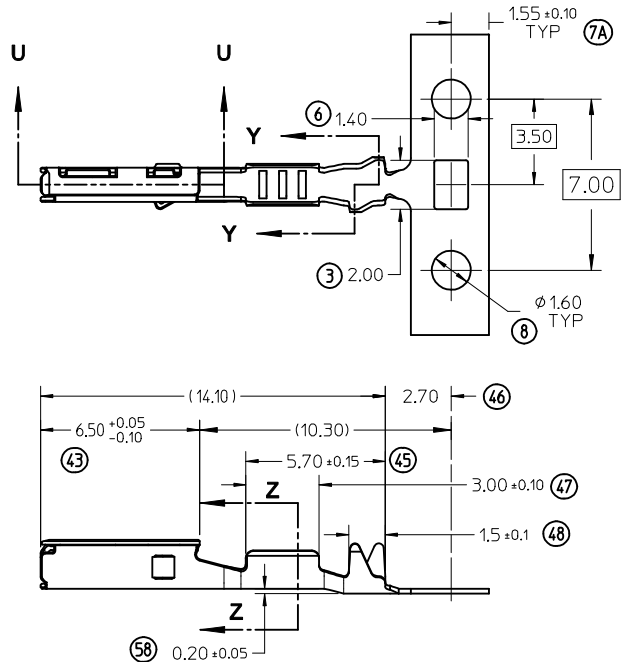
INSULATION GRIP



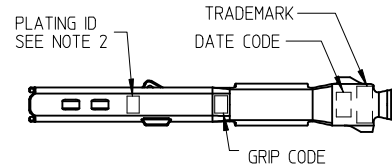
CONDUCTOR GRIP



SCALE 8:1



ISO VIEWS NOT TO SCALE



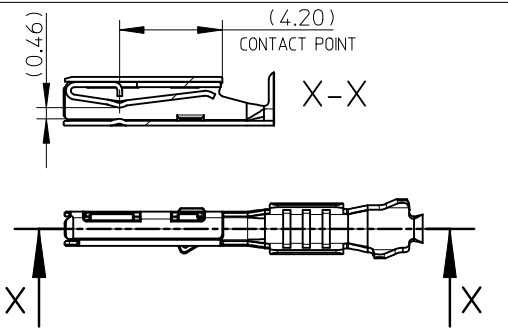
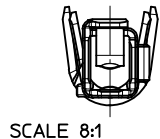
- NOTES: (UNLESS OTHERWISE SPECIFIED)
1. MATERIAL: COPPER ALLOY
 2. PLATING MARK: TIN (Sn) - NO MARK
SILVER (Ag) - A
 3. PACKAGING PER SD-31301-053
 4. CRIMPING PER AS-502306-002
 5. PROBING AT ANY LOCATION ON THE TERMINAL BEAM IS NOT PERMITTED
 6. PRODUCT SPECIFICATION PER PS-502306-001
 7. ANTI-TARNISH TREATMENT FOR SILVER PLATED AREA: SYNTHETIC HYDROCARBON CONTACT SURFACE FINISH OR EQUIVALENT

TABLE 1

FAMILY	GENDER	SEALING	PLATING	PART NO	PAYOFF DIRECTION	GRIP CODE	WIRE SIZES*	A ±0.20	B ±0.30	C ±0.10	D ±0.20	SPECIAL CHARACTERISTICS
CTX64	RECEPTACLE	MAT SEAL	Sn	34803-3211	LEFT (D)	S	22AWG	1.80	2.40	0.90	1.36	STANDARD PERFORMANCE TIN
				34803-3213	RIGHT (B)	L	0.22-0.35mm ²	2.15	2.50	1.20	1.72	STANDARD PERFORMANCE TIN
				34803-3212	LEFT (D)	L	20AWG	2.15	2.50	1.20	1.72	STANDARD PERFORMANCE TIN
			Ag	34803-3214	RIGHT (B)	L	0.50-0.85mm ²	1.80	2.40	0.90	1.36	HIGH PERFORMANCE SILVER
				34803-5303	LEFT (D)	S	22AWG	1.80	2.40	0.90	1.36	HIGH PERFORMANCE SILVER
				34803-5307	RIGHT (B)	L	0.22-0.35mm ²	2.15	2.50	1.20	1.72	HIGH PERFORMANCE SILVER
34803-5305	LEFT (D)	L	20AWG	2.15	2.50	1.20	1.72	HIGH PERFORMANCE SILVER				
34803-5309	RIGHT (B)	L	0.50-0.85mm ²	2.15	2.50	1.20	1.72	HIGH PERFORMANCE SILVER				

* SEE AS-502306-002 FOR SPECIFIC WIRE TYPES

SILVER CONTACT SHAPE



ADD SILVER CONTACT P/N
 EC NO: GZ016-0163
 DRWN:VJOUAS 2016/06/06
 CHKD:BMOSER 2016/06/06
 APPR:OPLESSIS 2016/06/13

QUALITY SYMBOLS
 F=0
 E=0
 F=0

GENERAL TOLERANCES (UNLESS SPECIFIED)

	mm	INCH
4 PLACES	± ---	± ---
3 PLACES	± ---	± ---
2 PLACES	± 0.08	± ---
1 PLACE	± 0.08	± ---
0 PLACE	± ---	± ---

ANGULAR ± 1 °
 DRAFT WHERE APPLICABLE MUST REMAIN WITHIN DIMENSIONS

DIMENSION STYLE MM ONLY
 DRAWN BY AKARANA DATE 2013/03/05
 CHECKED BY ADHIR DATE 2013/06/05
 APPROVED BY BMOSER DATE 2013/06/27
 MATERIAL NO. SEE TABLE

SCALE 5:1
 DESIGN UNITS METRIC
 THIRD ANGLE PROJECTION
 TITLE CTX64 RECEPTACLE TERMINAL
molex
 DOCUMENT NO. SD-34803-002
 SHEET NO. 1 OF 1
 THIS DRAWING CONTAINS INFORMATION THAT IS PROPRIETARY TO MOLEX INCORPORATED AND SHOULD NOT BE USED WITHOUT WRITTEN PERMISSION