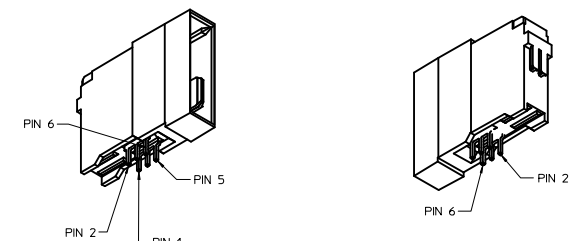
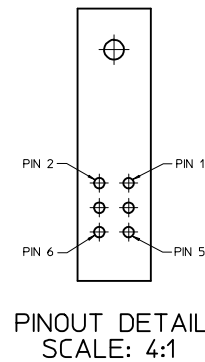
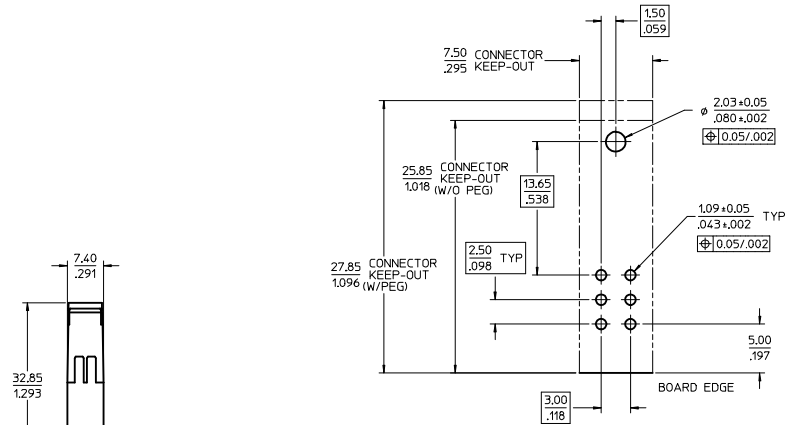


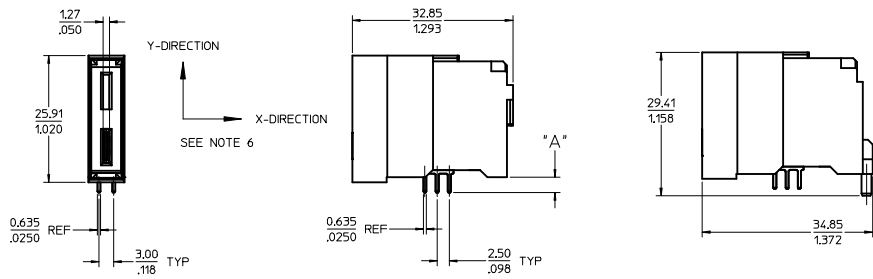
| PART NUMBER | DESCRIPTION | DIM "A" PC TAIL LENGTH | PLATING |
|-------------|------------------------|---------------------------|---|
| 75561-5100 | SHORT PC TAIL - NO PEG | 3.077,121 | 30µ INCH MIN SELECT HARD GOLD IN CONTACT AREA WITH 100µ INCH MIN SELECT TIN IN TAIL AREA OVER 50µ INCH MIN NICKEL OVERALL |
| 75561-5101 | LONG PC TAIL - NO PEG | 3.811,150 | |
| 75561-1510 | SHORT PC TAIL - PEG | 3.077,121 | 30µ INCH MIN SELECT HARD GOLD IN CONTACT AREA WITH 100µ INCH MIN SELECT TIN IN TAIL AREA OVER 50µ INCH MIN NICKEL OVERALL |
| 75561-1511 | LONG PC TAIL - PEG | 3.811,150 | |

- NOTES:
1. MATERIALS:
- HOUSING: 30% GLASS FILLED, LCP 94V-0, COLOR: BLACK
- TERMINALS: COPPER ALLOY
PLATING: PER ES-88 - SEE CHART
 2. SEE CHART FOR REFERENCE DOCUMENTS
 3. PLUG MATES WITH RECEPTACLE ASSEMBLIES: 75545-5100 & 75545-5101
 4. MODULE IS DESIGNED FOR SOLDERING TO THE PCB
 5. MODULE ASSEMBLY IS RoHS COMPLIANT
 6. GATHERABILITY: +0.65/.026 X-DIRECTION
+1.30/.051 Y-DIRECTION

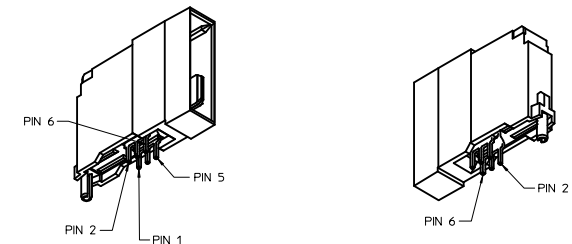


PCB LAYOUT
SCALE: 4:1

75561-5100 SHOWN
(W/O PEG)



SAME AS 75561-5***
EXCEPT AS SHOWN



75561-1510 SHOWN
(W/PEG)

75561-5*** SHOWN
(W/O PEG)

REFERENCE DOCUMENTS

| | |
|--------------|--|
| PS-75431-999 | PRODUCT SPECIFICATION: PERFORMANCE AND RATINGS |
| SD-75555-*** | FINAL ASSEMBLY CONFIGURATION DRAWING |

| CORRECTED HSG GRAPHICS EC NO: UCP2014-2193 DRAWN: QUILLES 2013/11/19 CHK: KAMBANDURA 2013/11/19 APP: P. RAJAPATEL 2013/12/10 | QUALITY SYMBOLS | GENERAL TOLERANCES (UNLESS SPECIFIED) | | DIMENSION STYLE | SCALE | DESIGN UNITS | THIRD ANGLE PROJECTION |
|--|-----------------|--|-------|---------------------------|------------|--|------------------------|
| | | mm | INCH | MM/IN | 2:1 | METRIC | ⊕ |
| ▽=0 | 4 PLACES | ±--- | ±--- | DRAWN BY | DATE | TITLE | |
| ▽=0 | 3 PLACES | ±--- | ±.008 | AD RATNOL | 2005/04/19 | POWERMASS 40 AMP MODULE, PLUG LOWER | |
| ▽=0 | 2 PLACES | ±0.20 | ±.013 | CHECKED BY | DATE | MOLEX INCORPORATED | |
| ▽=0 | 1 PLACE | ±0.33 | ±--- | MDATA | 2005/04/19 | DOCUMENT NO. | |
| | | ANGULAR ±1/2° | | APPROVED BY | DATE | SD-75561-101 | |
| | | DRAFT WHERE APPLICABLE MUST REMAIN WITHIN DIMENSIONS | | APATEL | 2005/04/19 | SHEET NO. 1 OF 1 | |
| | | SIZE D | | MATERIAL NO. SEE CHART | | THIS DRAWING CONTAINS INFORMATION THAT IS PROPRIETARY TO MOLEX INCORPORATED AND SHOULD NOT BE USED WITHOUT WRITTEN PERMISSION | |