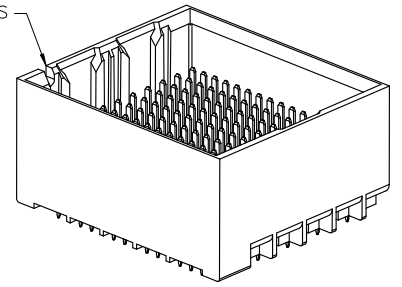
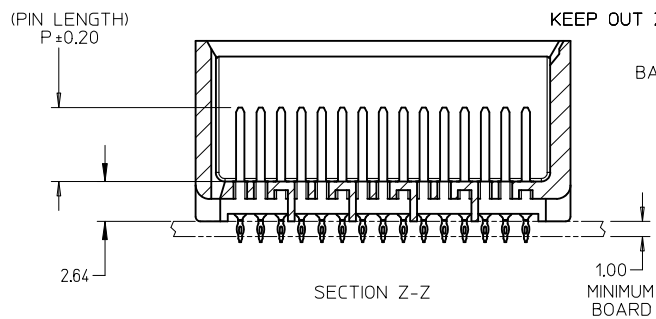
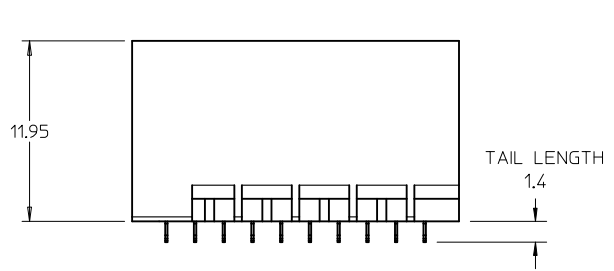


ROW A  
ROW B  
ROW C  
ROW D  
ROW E  
ROW F  
ROW G  
ROW H  
ROW J  
ROW K  
ROW L  
ROW M  
ROW N  
ROW O  
ROW P

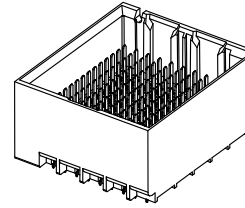


- NOTES:
1. MATERIALS: HOUSING - LIQUID CRYSTAL POLYMER (LCP)  
GLASS-FILLED, UL94V-0  
TERMINALS - HIGH PERFORMANCE COPPER ALLOY
  2. FINISH: 10 μNCH MIN GOLD IN CONTACT AREA.  
SELECTIVE MATTE TIN (LEAD-FREE) ON PCB TAILS, NICKEL OVERALL.
  3. REFER TO MOLEX PRODUCT SPECIFICATION PS-76060-999  
FOR PERFORMANCE SPECIFICATIONS AND ADDITIONAL PCB INFORMATION.
  4. THIS PART CONFORMS TO CLASS B REQUIREMENTS OF  
MOLEX COSMETIC SPEC PS-45499-002.
  5. PARTS PACKAGED PER PK-70873-7702.
  6. SEE SHEETS 2 & 3 FOR PART NUMBERS AND BOARD RELATIONSHIPS.
  7. MATES WITH IMPACT DC SERIES NO. 76060.
  8. REFER TO MOLEX PCB ROUTING GUIDE AS-76060-990 FOR ANTIPAD AND  
ROUTING RECOMMENDATIONS.
  9. \*THESE DIMENSIONS REPRESENT THE AREA NEEDED TO ACCOMMODATE CONNECTOR  
INSERTION AND REPAIR ON THE PC BOARD. THIS IS REFERRED TO AS THE  
"CONNECTOR KEEP OUT ZONE" AND DOES NOT REPRESENT THE ACTUAL PERIMETER  
OF THE CONNECTOR. WHEN LAYING OUT A PC BOARD FOR CONNECTORS STACKED  
TOGETHER, USE THE 1.9mm PROGRESSION.\*

MINOR CHANGE EC NO: UCP2012-3822 DRAWINGS CHKD: 2012/05/22 APPR: RNELSON 2012/06/04	QUALITY SYMBOLS ▽=0 ▽=0 ▽=0	GENERAL TOLERANCES (UNLESS SPECIFIED)		DIMENSION STYLE MM ONLY		SCALE 4:1	DESIGN UNITS METRIC	THIRD ANGLE PROJECTION	
				DRAWN BY DATE		TITLE			
				CHECKED BY DATE		IMPACT 5 PAIR BACKPLANE UNGUIDED ASSEMBLY SALES DRAWING			
				APPROVED BY DATE		molex			
		ANGULAR ±1/2°		MATERIAL NO.		DOCUMENT NO.		SHEET NO.	
		DRAFT WHERE APPLICABLE MUST REMAIN WITHIN DIMENSIONS		SEE CHART		SD-171296-0001		1 OF 3	
				SIZE C		THIS DRAWING CONTAINS INFORMATION THAT IS PROPRIETARY TO MOLEX INCORPORATED AND SHOULD NOT BE USED WITHOUT WRITTEN PERMISSION			

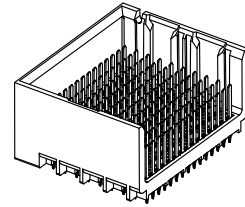
# PART NUMBER CHART

MATERIAL NUMBER	# OF COLUMNS	# OF DIFF PAIR	DIM "A"	DIM "B"	DUAL END WALL OPTION
171296-182*	8	40	17.9	13.30	
171296-112*	10	50	21.7	17.10	
171296-122*	12	60	25.5	20.90	
171296-172*	14	70	29.3	24.70	
171296-162*	16	80	33.1	28.50	



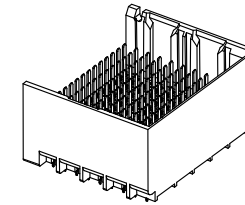
DUAL END  
WALL OPTION

MATERIAL NUMBER	# OF COLUMNS	# OF DIFF PAIR	DIM "A"	DIM "B"	LEFT END WALL OPTION
171296-118*	8	40	16.5	13.30	
171296-111*	10	50	20.3	17.10	
171296-121*	12	60	24.1	20.90	
171296-171*	14	70	27.9	24.70	
171296-161*	16	80	31.7	28.50	



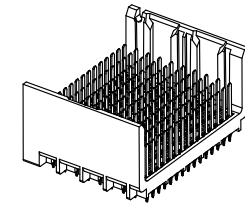
LEFT END  
WALL OPTION

MATERIAL NUMBER	# OF COLUMNS	# OF DIFF PAIR	DIM "A"	DIM "B"	RIGHT END WALL OPTION
171296-183*	8	40	16.5	13.30	
171296-113*	10	50	20.3	17.10	
171296-123*	12	60	24.1	20.90	
171296-173*	14	70	27.9	24.70	
171296-163*	16	80	31.7	28.50	



RIGHT END  
WALL OPTION

MATERIAL NUMBER	# OF COLUMNS	# OF DIFF PAIR	DIM "A"	DIM "B"	OPEN WALL OPTION
171296-180*	8	40	15.1	13.30	
171296-110*	10	50	18.9	17.10	
171296-120*	12	60	22.7	20.90	
171296-170*	14	70	26.5	24.70	
171296-160*	16	80	30.3	28.50	



OPEN  
WALL OPTION

SEE SHEET 1 EC NO: UCP2012-3822 DRWNGES 2012/05/22 CHKD: APPR:RNELSON 2012/06/04	QUALITY SYMBOLS	GENERAL TOLERANCES (UNLESS SPECIFIED)	DIMENSION STYLE <b>MM ONLY</b>	SCALE 2:1	DESIGN UNITS METRIC	THIRD ANGLE PROJECTION
	▽=0	4 PLACES ± --- ± ---	mm INCH	DRAWN BY JB INGHAM	DATE 2011/11/21	TITLE <b>IMPACT 5 PAIR BACKPLANE                  UNGUIDED ASSEMBLY                  SALES DRAWING</b>  <b>molex</b> DOCUMENT NO. SD-171296-0001
	▽=0	3 PLACES ± --- ± ---		CHECKED BY JLAURX	DATE 2011/11/21	
	▽=0	2 PLACES ± 0.13 ± ---		APPROVED BY JLAURX	DATE 2011/12/02	
	1 PLACE ± 0.25 ± ---		MATERIAL NO.			
		0 PLACE ± ±				SHEET NO. 2 OF 3
		ANGULAR ±1/2°				
		DRAFT WHERE APPLICABLE MUST REMAIN WITHIN DIMENSIONS	SIZE C	THIS DRAWING CONTAINS INFORMATION THAT IS PROPRIETARY TO MOLEX INCORPORATED AND SHOULD NOT BE USED WITHOUT WRITTEN PERMISSION		

# PART NUMBER LOGIC

171296-\*\*\*\*

MODULE TYPE  
1 = UNGUIDED, MATTE TIN

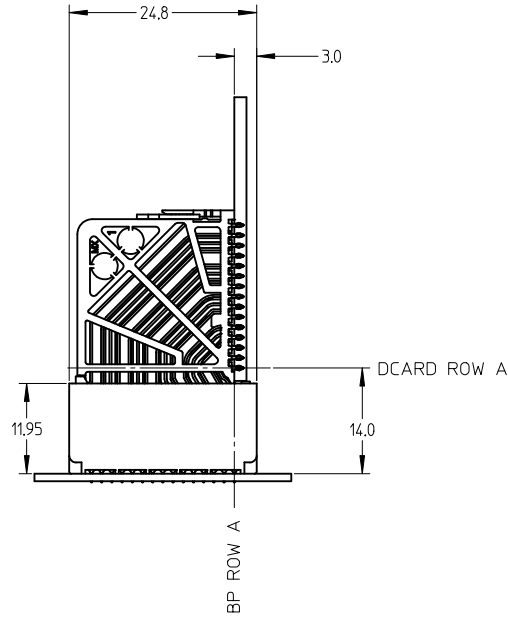
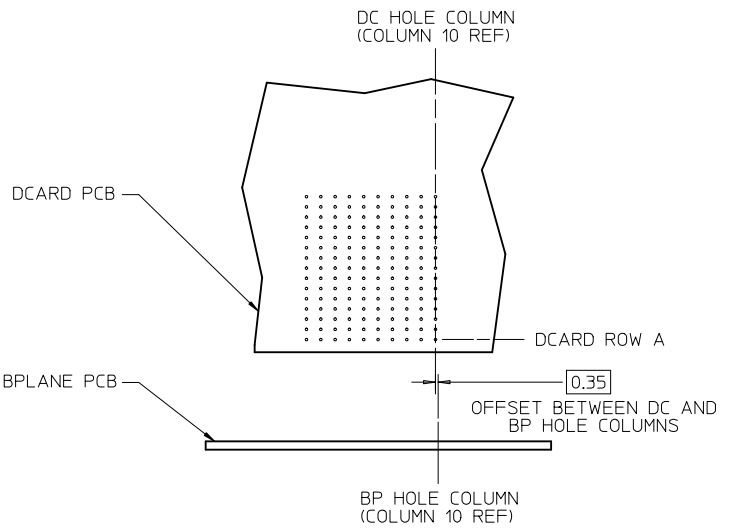
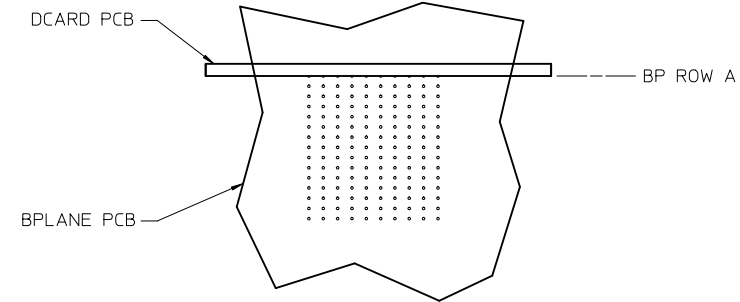
# OF COLUMNS  
1 = 10 COL  
2 = 12 COL  
6 = 16 COL  
7 = 14 COL  
8 = 8 COL

P=PIN LENGTH

3 = 4.50 (SHORT COMPLIANT, 0.46±0.05 PTH)  
4 = 4.90 (SHORT COMPLIANT, 0.46±0.05 PTH)  
5 = 5.50 (SHORT COMPLIANT, 0.46±0.05 PTH)  
6 = 4.50 (MICRO COMPLIANT, 0.39±0.05 PTH)  
7 = 4.90 (MICRO COMPLIANT, 0.39±0.05 PTH)  
8 = 5.50 (MICRO COMPLIANT, 0.39±0.05 PTH)

END WALL OPTIONS  
0 = OPEN ENDS  
1 = LEFT END WALL  
2 = DUAL END WALL  
3 = RIGHT END WALL

## IMPACT 5 PAIR BOARD RELATIONSHIPS



SEE SHEET 1 EC NO: UCP2012-3822 DRWNGES 2012/05/22 CHKD: APPR:RNELSON 2012/06/04 REV:	QUALITY SYMBOLS	GENERAL TOLERANCES (UNLESS SPECIFIED)	DIMENSION STYLE <b>MM ONLY</b>	SCALE <b>2:1</b>	DESIGN UNITS <b>METRIC</b>	THIRD ANGLE PROJECTION
	▽=0	mm INCH	DRAWN BY DATE JB INGHAM 2011/11/21	TITLE	IMPACT 5 PAIR BACKPLANE UNGUIDED ASSEMBLY SALES DRAWING	
	▽=0	4 PLACES ± --- ± ---	CHECKED BY DATE JLAURX 2011/11/21	<b>molex</b> DOCUMENT NO. SD-171296-0001 SHEET NO. 3 OF 3		
	▽=0	3 PLACES ± --- ± ---	APPROVED BY DATE JLAURX 2011/12/02			
	2 PLACES ± 0.13 ± ---	ANGULAR ±1/2°		DRAFT WHERE APPLICABLE MUST REMAIN WITHIN DIMENSIONS		
	1 PLACE ± 0.25 ± ---	MATERIAL NO.		THIS DRAWING CONTAINS INFORMATION THAT IS PROPRIETARY TO MOLEX INCORPORATED AND SHOULD NOT BE USED WITHOUT WRITTEN PERMISSION		
	0 PLACE ± ±	SIZE C				