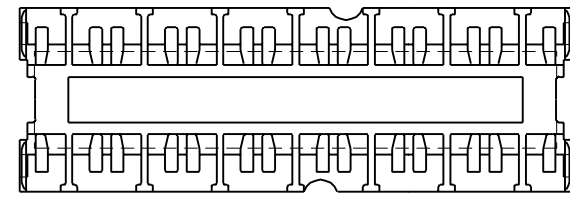
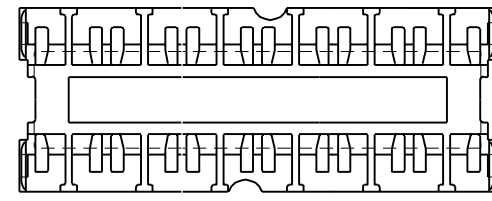


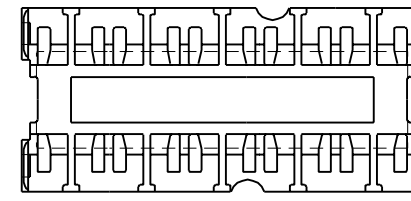
MATERIAL NUMBER	CIRCUITS	DIM. "A"
43980-1001	6	31.30/(1.232)
43980-1002	8	41.30/(1.626)
43980-1003	10	51.30/(2.020)
43980-1004	12	61.30/(2.413)
43980-1005	14	71.30/(2.807)



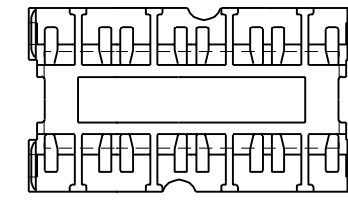
14 CIRCUIT



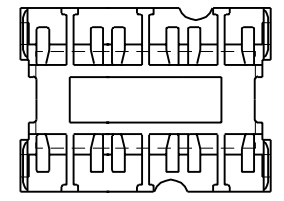
12 CIRCUIT



10 CIRCUIT

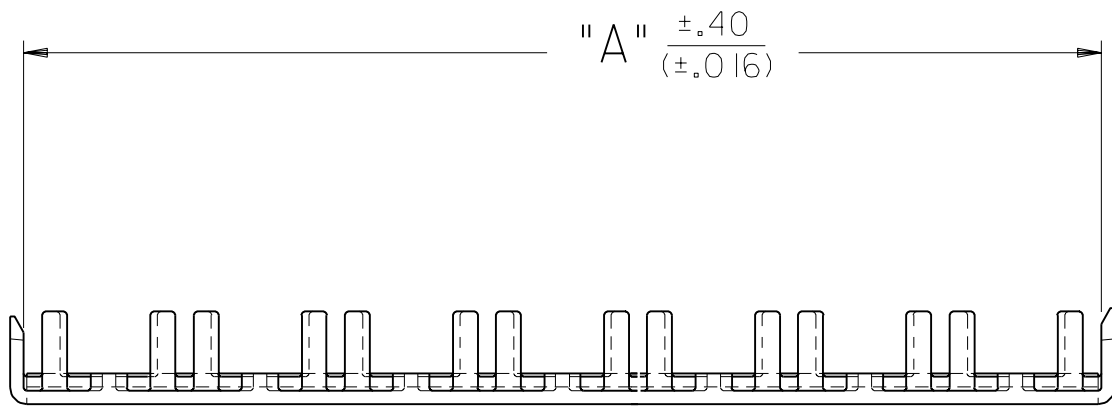


8 CIRCUIT



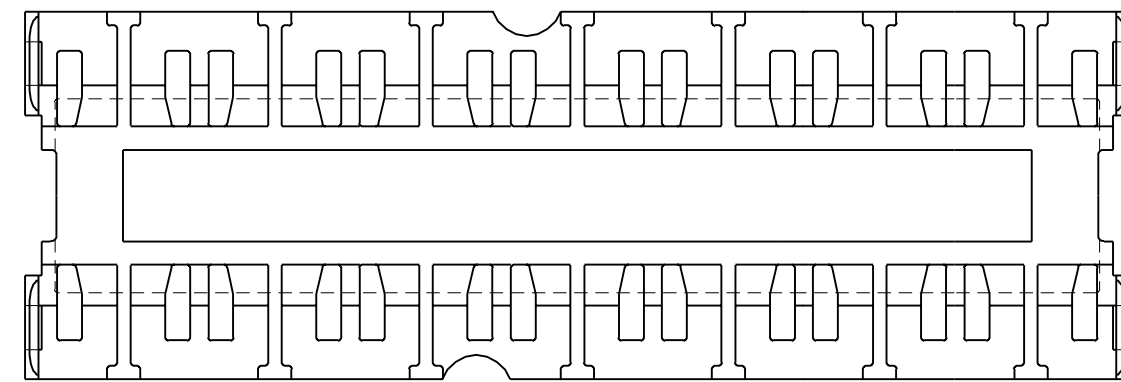
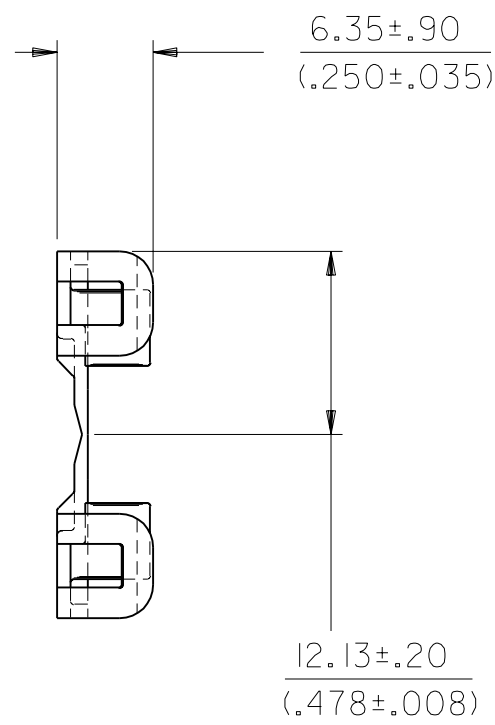
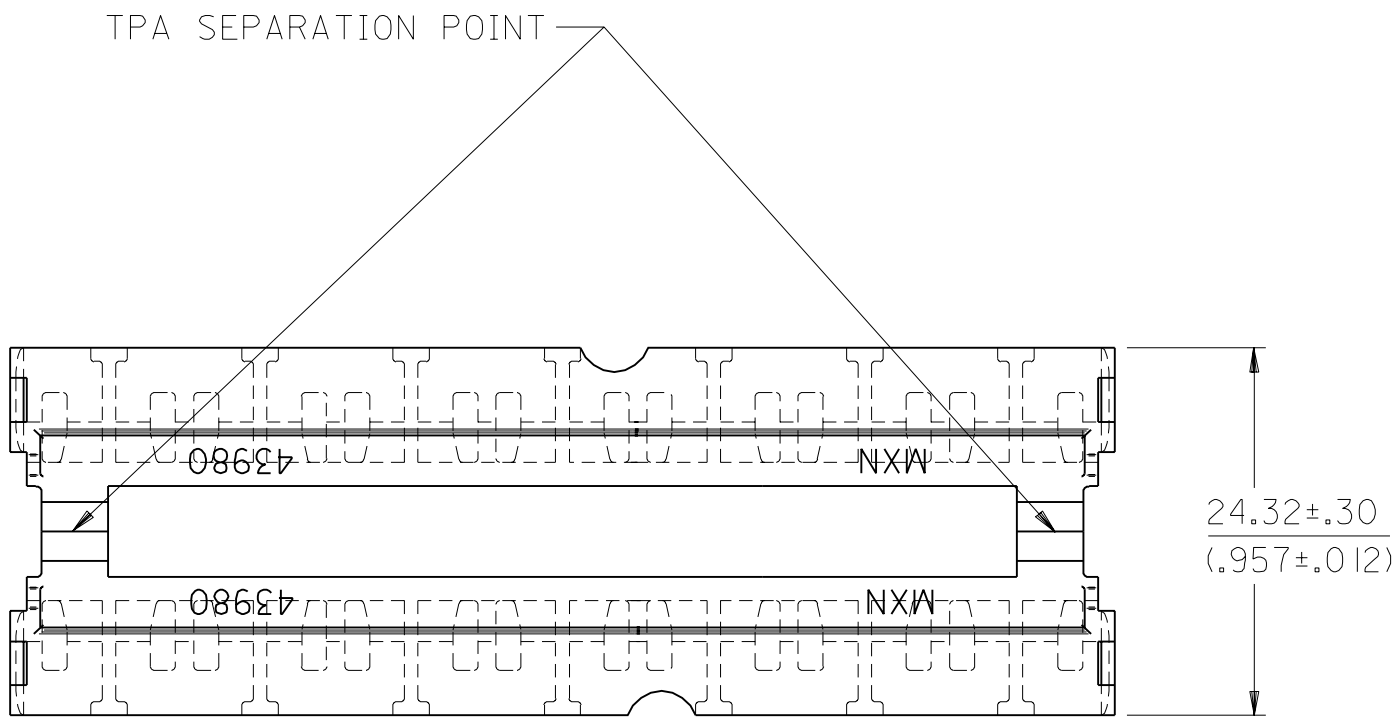
6 CIRCUIT

CIRCUIT SIZES
SCALE: 1=1



NOTES:

- MATERIAL: POLYESTER, U.L. 94V-0. COLOR: NATURAL (WHITE)
- PRODUCT SPEC.: NONE
- USED ON 43914 RECEPTACLE HOUSING AND 43938 PLUG HOUSING.



ADDED TOLERANCES EC NO. UCR 1999-0808 DRWN: COMERC 99/05/27 CHK: COMERC 99/05/27 APPR: COMERC 99/05/27	QUALITY SYMBOLS MAJOR $\nabla = 0$ CRITICAL $\nabla_c = 0$	GENERAL TOLERANCES: (UNLESS SPECIFIED)		SCALE 2:1	DESIGN UNITS <input checked="" type="checkbox"/> mm <input type="checkbox"/> INCH	THIRD ANGLE PROJECTION <input checked="" type="checkbox"/> <input type="checkbox"/>	DIMENSIONS: <input checked="" type="checkbox"/> mm <input type="checkbox"/> INCH <input type="checkbox"/> mm ONLY	SHT	REV
		4 PLACES	$\pm 0.---$	$\pm .---$	DRAWN BY & DATE	TITLE: TWIN TPA'S DUAL ROW 6-14 CIRCUIT (MINI-FIT SR.)			
		3 PLACES	$\pm 0.---$	$\pm .---$	CHECKED BY & DATE	COMERC 97/08/25			
		2 PLACES	$\pm 0.---$	$\pm .---$	APPROVED BY & DATE	FRY 97/08/26			
1 PLACE	$\pm 0.---$	$\pm .---$	ANGULAR: $\pm \text{ }^\circ$	CAD FILENAME	MATERIAL NO.	DRAWING NO.	SHEET NO.		
DRAFT WHERE APPLICABLE MUST REMAIN WITHIN DIMENSIONS			S4398002.DGN		SEE CHART	SD-43980-002	1 OF 1		
THIS DRAWING CONTAINS INFORMATION THAT IS PROPRIETARY TO MOLEX INCORPORATED AND SHOULD NOT BE USED WITHOUT WRITTEN PERMISSION.									