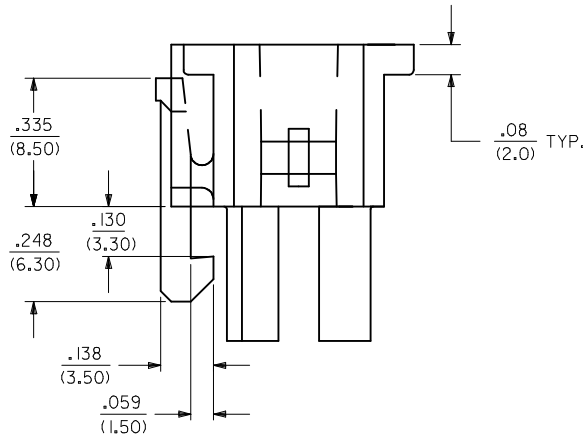
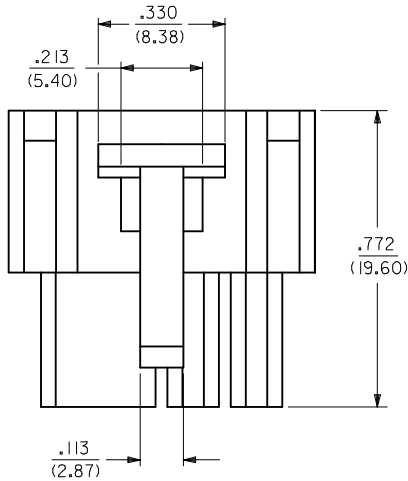
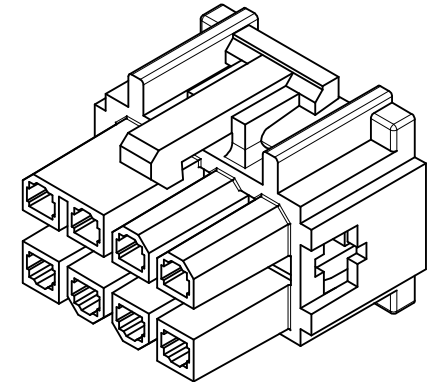
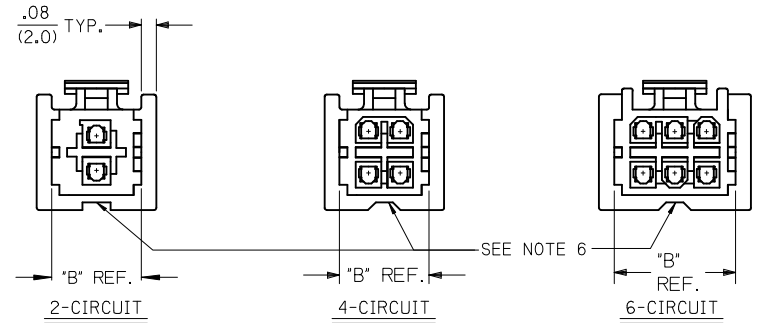
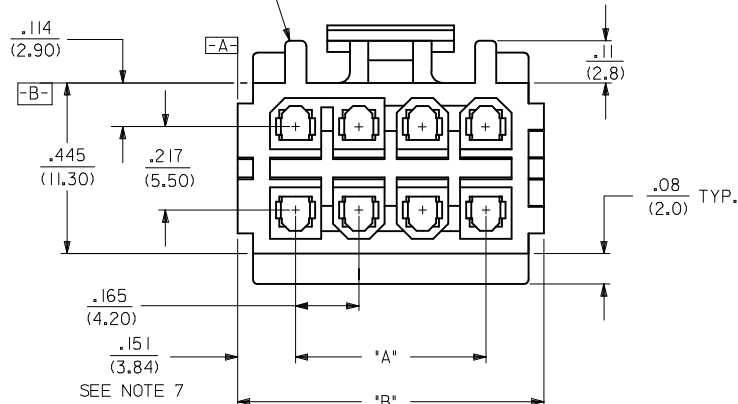


PROTECTIVE SIDES AVAILABLE ON ALL CIRCUITS EXCEPT TWO AND FOUR CIRCUITS.



PROTECTIVE SIDES AVAILABLE ON ALL CIRCUITS EXCEPT TWO AND FOUR CIRCUITS.



NOTES:

- MATERIAL: UNFILLED POLYESTER. U.L. 94V-0. HOUSING COLOR: SEE CHART
- FINISH: N/A
- PRODUCT SPECIFICATION: PS-5556-003
- PACKAGING SPECIFICATION: PK-30067-001.
- HOUSING TO BE USED WITH TERMINAL #5556. AND T.P.A. LOCK #30072-*. RECEPTACLE HOUSING TO MATE WITH PLUG HOUSING #30068, ST. HEADER #30069, AND RT. ANGLE HEADERS #30070 & #44483. HOUSING ACCEPTS CONNECTOR POSITIONING ASSURANCE (C.P.A.) LOCK #30071.
- RELIEF NOTCH IS OPTIONAL AND MAY OR MAY NOT APPEAR ON 2, 4, 6, 10 & 12 CIRCUIT HOUSINGS ONLY.
- FOR 2 CKT HOUSING, DIMENSION IS .231/5.88
- FOR 2 & 4 CKT HOUSINGS, DIMENSION IS .070/1.78
- THIS PART CONFORMS TO CLASS B REQUIREMENTS OF COSMETIC SPEC PS-45499-002.
- CHAMFERS ARE OPTIONAL AND MAY OR MAY NOT BE PRESENT ON 16 CIRCUIT HOUSINGS.
- TEXT ON PART IS FOR REFERENCE ONLY. TEXT AND TEXT LOCATION MAY VARY DEPENDING ON PART NUMBER AND/OR TOOL.

ADD 10, 12 CKT VIEW EC NO: UCP2016-4837 DRWN:SLAFTER 2016/06/21 CHKD:JBELL 2016/06/21 APPR:FSMITH 2016/06/28	QUALITY SYMBOLS ▽=0 ▽=0 ▽=0	GENERAL TOLERANCES (UNLESS SPECIFIED)		DIMENSION STYLE		SCALE	DESIGN UNITS	THIRD ANGLE PROJECTION	
		m/m INCH		IN/MM		4:1	METRIC	1 OF 2	
H3	DESCRIPTION	4 PLACES ± --- ± ---		DRAWN BY DATE		TITLE		SD-30067-*	
		3 PLACES ± --- ± .010		RJF 09/23/91		2-16 CKT, RECPT. HSG. MINI-FIT T.P.A. SERIES			
H3	DESCRIPTION	2 PLACES ± 0.25 ± .014		CHECKED BY DATE		DOCUMENT NO.		SHEET NO.	
		1 PLACE ± 0.36 ± ---		GEP 09/23/91					
H3	DESCRIPTION	0 PLACE ± ±		APPROVED BY DATE		THIS DRAWING CONTAINS INFORMATION THAT IS PROPRIETARY TO MOLEX INCORPORATED AND SHOULD NOT BE USED WITHOUT WRITTEN PERMISSION		1 OF 2	
		ANGULAR ±1/2°		FSMITH 2010/10/25					
DRAFT WHERE APPLICABLE MUST REMAIN WITHIN DIMENSIONS		SEE CHART		MATERIAL NO.		SD-30067-*		1 OF 2	

	13	12	11	10	9	8	7	6	5	4	3	2	1
	BLACK		NATURAL										
J	CKT. SIZE	ENG. NO.	EDP. NO.	ENG. NO.	EDP. NO.	DIM. "A"	DIM. "B"						
	02	30067-02A2	I5-97-502I	30067-0212	30067-0212	—	.467 (11.86)						
	04	30067-04A2	I5-97-504I	30067-0412	30067-0412	.165 (4.20)	.467 (11.86)						
I	06	30067-06A2	I5-97-506I	30067-0612	30067-0612	.331 (8.40)	.633 (16.08)						
	08	30067-08A2	I5-97-508I	30067-0812	30067-0812	.496 (12.60)	.798 (20.27)						
	10	30067-10A2	I5-97-510I	30067-1012	30067-1012	.661 (16.80)	.963 (24.46)						
H	12	30067-12A2	I5-97-512I	30067-1212	30067-1212	.827 (21.00)	1.129 (28.68)						
	14	30067-14A2	NOT TOOLED	30067-1412	NOT TOOLED	.992 (25.20)	1.294 (32.87)						
	16	30067-16A2	I5-97-516I	30067-1612	30067-1612	1.157 (29.40)	1.459 (37.06)						

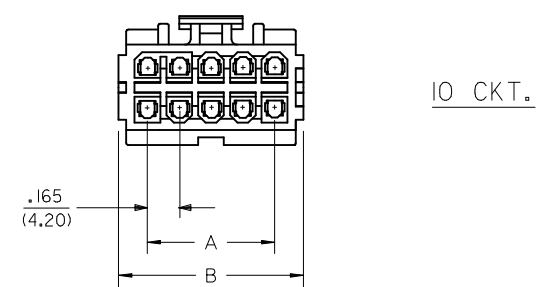
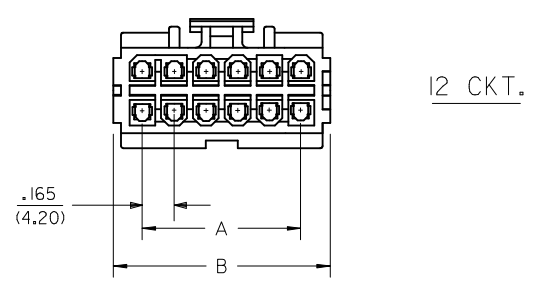
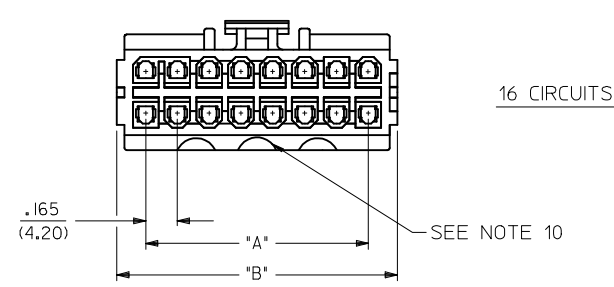
LEGEND:

30067 - * * * 2

CIRCUIT SIZE ——— (02-16)

HOUSING COLOR ———

A = BLACK
1 = NATURAL



SEE SHEET 1 EC NO: UCP2016-4837 DRW/CSL/AFTER 2016/06/21 CHKD:JBELL 2016/06/21 APPR:FSM/TH 2016/06/28 REV: H3	QUALITY SYMBOLS 	GENERAL TOLERANCES (UNLESS SPECIFIED) <table border="1"> <thead> <tr> <th></th> <th>mm</th> <th>INCH</th> </tr> </thead> <tbody> <tr> <td>4 PLACES ±</td> <td>---</td> <td>± ---</td> </tr> <tr> <td>3 PLACES ±</td> <td>---</td> <td>± .010</td> </tr> <tr> <td>2 PLACES ±</td> <td>0.25</td> <td>± .014</td> </tr> <tr> <td>1 PLACE ±</td> <td>0.36</td> <td>± ---</td> </tr> <tr> <td>0 PLACE ±</td> <td></td> <td>±</td> </tr> </tbody> </table>		mm	INCH	4 PLACES ±	---	± ---	3 PLACES ±	---	± .010	2 PLACES ±	0.25	± .014	1 PLACE ±	0.36	± ---	0 PLACE ±		±	DIMENSION STYLE IN/MM DRAWN BY: RJF DATE: 09/23/91 CHECKED BY: GEP DATE: 09/23/91 APPROVED BY: FSM/TH DATE: 2010/10/25	SCALE: 2:1 DESIGN UNITS: METRIC THIRD ANGLE PROJECTION	TITLE: 2-16 CKT. RECP. HSG. MINI-FIT T.P.A. SERIES
		mm	INCH																				
	4 PLACES ±	---	± ---																				
	3 PLACES ±	---	± .010																				
2 PLACES ±	0.25	± .014																					
1 PLACE ±	0.36	± ---																					
0 PLACE ±		±																					
DRAFT WHERE APPLICABLE MUST REMAIN WITHIN DIMENSIONS		MATERIAL NO.: SEE CHART DOCUMENT NO.: SD-30067-*	molex																				
		SIZE: C	THIS DRAWING CONTAINS INFORMATION THAT IS PROPRIETARY TO MOLEX INCORPORATED AND SHOULD NOT BE USED WITHOUT WRITTEN PERMISSION																				
				SHEET NO.: 2 OF 2																			