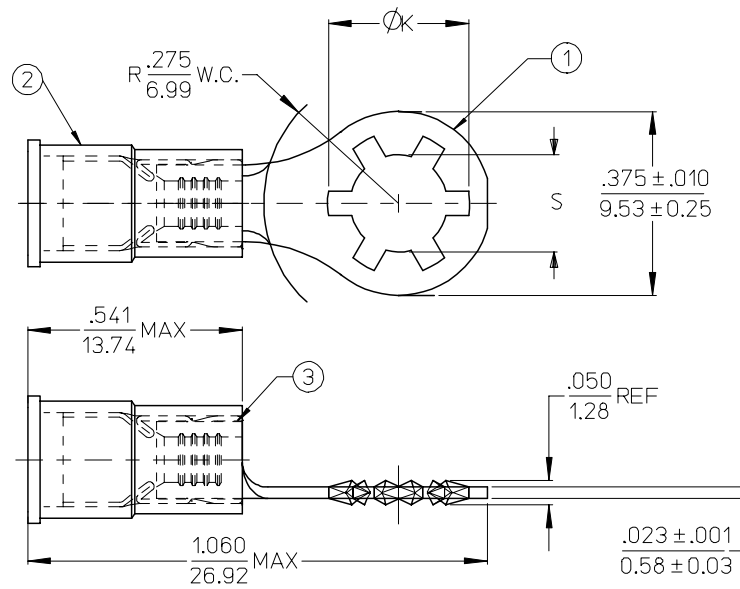


MATERIAL NUMBER	ENGINEERING NUMBER	S ±.007/.178	K REF	MATERIAL
190760001	SRA-529-06	.146/3.71	.236/5.99	BRASS
190760003	SRA-529-08	.173/4.40	.263/6.68	BRASS
190760005	SRA-529-10	.198/5.03	.288/7.32	BRASS
190760013	SRB-529-06	.146/3.71	.236/5.99	BRASS
190760015	SRB-529-08	.173/4.40	.263/6.68	BRASS
190760017	SRB-529-10	.198/5.03	.288/7.32	BRASS
190760007	SRA-S-529-06	.146/3.71	.236/5.99	STEEL
190760009	SRA-S-529-08	.173/4.40	.263/6.68	STEEL
190760011	SRA-S-529-10	.198/5.03	.288/7.32	STEEL
190760019	SRB-S-529-06	.146/3.71	.236/5.99	STEEL
190760021	SRB-S-529-08	.173/4.40	.263/6.68	STEEL
190760023	SRB-S-529-10	.198/5.03	.288/7.32	STEEL



# SALES DRAWING

ITEM	QTY	DESCRIPTION	MATERIAL	FINISH
3	1	FERRULE PLATED	BRASS	TIN PLATING
2	1	RED 600V AVIK MLD INS	NYLON	RED
1	1	STAR RING KRIMPTITE	SEE CHART	TIN PLATING

NOTES:  
 1. MATERIAL: SEE CHART  
 2. FINISH: SEE CHART  
 3. ALL COMPONENTS OF THIS ASSEMBLY ARE RoHS COMPLIANT

REVISED / REDRAWN EC NO: ETC2006-0323 DRWN:ASAYDEH 2006/03/15 CHKD:RDEROSS 2006/03/22 APPR:RDEROSS 2006/03/27	QUALITY SYMBOLS	GENERAL TOLERANCES (UNLESS SPECIFIED)	DIMENSION STYLE	SCALE	DESIGN UNITS	THIRD ANGLE PROJECTION															
	$\nabla=0$ $\nabla=0$	<table border="1"> <thead> <tr> <th></th> <th>mm</th> <th>INCH</th> </tr> </thead> <tbody> <tr> <td>4 PLACES</td> <td>± ---</td> <td>± ---</td> </tr> <tr> <td>3 PLACES</td> <td>± ---</td> <td>± .005</td> </tr> <tr> <td>2 PLACES</td> <td>± 0.13</td> <td>± .01</td> </tr> <tr> <td>1 PLACE</td> <td>± 0.25</td> <td>± ---</td> </tr> </tbody> </table>		mm	INCH	4 PLACES	± ---	± ---	3 PLACES	± ---	± .005	2 PLACES	± 0.13	± .01	1 PLACE	± 0.25	± ---	IN/MM	4:1	INCH	
		mm	INCH																		
	4 PLACES	± ---	± ---																		
3 PLACES	± ---	± .005																			
2 PLACES	± 0.13	± .01																			
1 PLACE	± 0.25	± ---																			
DESCRIPTION	DRAFT WHERE APPLICABLE MUST REMAIN WITHIN DIMENSIONS	<table border="1"> <thead> <tr> <th>DRAWN BY</th> <th>DATE</th> </tr> </thead> <tbody> <tr> <td>ASAYDEH</td> <td>06/03/15</td> </tr> <tr> <th>CHECKED BY</th> <th>DATE</th> </tr> <tr> <td>RDEROSS</td> <td>06/03/15</td> </tr> <tr> <th>APPROVED BY</th> <th>DATE</th> </tr> <tr> <td>RDEROSS</td> <td>06/03/15</td> </tr> </tbody> </table>	DRAWN BY	DATE	ASAYDEH	06/03/15	CHECKED BY	DATE	RDEROSS	06/03/15	APPROVED BY	DATE	RDEROSS	06/03/15	TITLE	STAR RING TERMINAL AVIKRIMP					
DRAWN BY	DATE																				
ASAYDEH	06/03/15																				
CHECKED BY	DATE																				
RDEROSS	06/03/15																				
APPROVED BY	DATE																				
RDEROSS	06/03/15																				
REV		MATERIAL NO.	SEE CHART	DOCUMENT NO.	MOLEX INCORPORATED																
A		SIZE	B	SD-19076-001		SHEET NO.															
		THIS DRAWING CONTAINS INFORMATION THAT IS PROPRIETARY TO MOLEX INCORPORATED AND SHOULD NOT BE USED WITHOUT WRITTEN PERMISSION					1 OF 1														