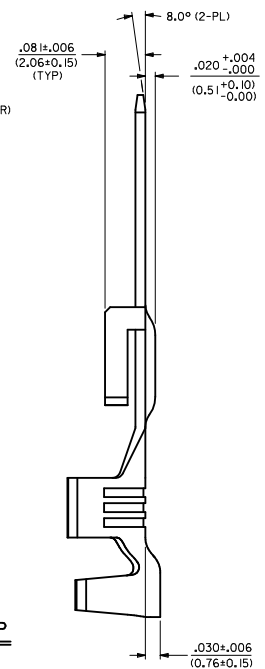
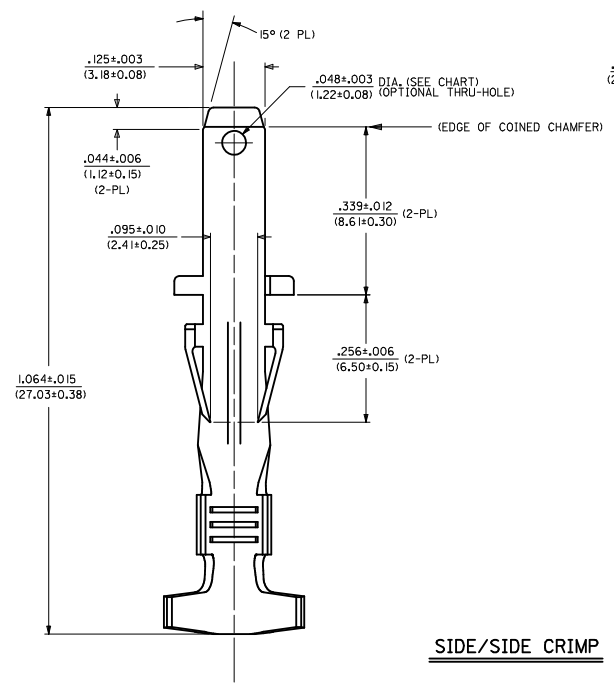
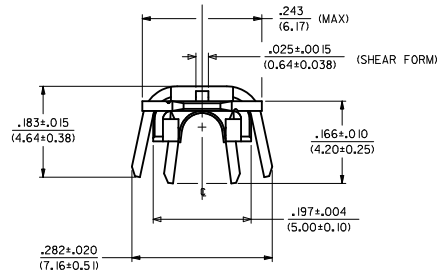


MATERIAL NUMBER	FINISH	HOLE
43178-3001	999	NOT USED
43178-3002	H901	NOT USED
43178-3003	F542	NOT USED



SIDE/SIDE CRIMP

NOTES

- MATERIAL: BRASS
- FINISH:
999 - UNPLATED
H901 - 20 MICROINCH MIN. HOT TIN DIP
F542 - 15 MICROINCH MIN. SELECT GOLD IN CONTACT AREA, 50 MICROINCH TIN-LEAD IN CRIMP AREA, NICKEL UNDERPLATE OVERALL.
- PRODUCT SPECIFICATION: PS-44441-001
- TERMINAL FOR USE WITH:
DOUBLE 18 AWG. UL 1015 STYLE WIRE (CRIMPED SIDE X SIDE)

REVISE NOTE #4 IEC NO. UCP2010-2241 DRAWN: HAH 2010/03/03 CHYD: JRELL 2010/03/03 APPR: FSWITH 2010/03/17	QUALITY SYMBOLS	GENERAL TOLERANCES (UNLESS SPECIFIED)	DIMENSION STYLE	SCALE	DESIGN UNITS	THIRD ANGLE PROJECTION
	∇=0 ∇=0 ∇=0	mm INCH 4 PLACES ± --- ± --- 3 PLACES ± --- ± .010 2 PLACES ± 0.25 ± .014 1 PLACE ± 0.35 ± --- ANGULAR ± 1/2°	IN/MM DRAWN BY DATE MAB 1995/06/16 CHECKED BY DATE KBP 1995/06/16 APPROVED BY DATE FSMASH 2010/09/16/97	8:1	INCH	TITLE TERMINAL, CRIMP MALE TAB .125/(3.18)X.020/(0.51) SABRE - F.B.S. - T.P.A.
	DRAFT WHERE APPLICABLE MUST REMAIN WITHIN DIMENSIONS	MATERIAL NO. SEE CHART	DOCUMENT NO. SD-43178-3***	MOLEX INCORPORATED		
	SIZE D	THIS DRAWING CONTAINS INFORMATION THAT IS PROPRIETARY TO MOLEX INCORPORATED AND SHOULD NOT BE USED WITHOUT WRITTEN PERMISSION				