

# P Series 4 Tumbler Snap-in Switchlocks



Models Available

## Features/Benefits

- Snap-in mounting
- Multi-pole and multi-position
- Positive detent

## Typical Applications

- Computers
- Communication equipment

## Specifications

CONTACT RATING: Q contact material: 4 AMPS @ 125 V AC;  
1 AMP @ 250 V AC (UL) See page L-20 for additional ratings.  
ELECTRICAL LIFE: 10,000 make-and-break cycles at full load.  
CONTACT RESISTANCE: Below 10 m Ω typ. initial @  
2-4 V DC, 100 mA for both silver and gold plated contacts.  
INSULATION RESISTANCE: 10<sup>9</sup> Ω min.  
DIELECTRIC STRENGTH: 1,000 Vrms min. @ sea level.  
INDEXING: 45° or 90°, 2-3 positions.

## Materials

SWITCH HOUSING & LOCK: One piece construction,  
6/6 Nylon (UL 94V-2), black  
4 disc tumbler mechanism.  
KEYS: One nickel plated brass key and one key with insert  
molded plastic head.  
TUMBLERS: Disc tumblers, brass.  
CONTACTS & TERMINALS: Q contact material: Copper, silver  
plated. See page L-20 for additional contact materials.

**NOTE:** Any models supplied with Q or B contact material are RoHS compliant.

**NOTE:** Specifications and materials listed above are for switchlocks with standard options. For information on specific and custom switchlocks, consult Customer Service Center.

## Build-A-Switch

To order, simply select desired option from each category and place in the appropriate box. Available options are shown and described on pages L-19 and L-21. For additional options not shown in catalog, consult Customer Service Center.

### Switch and Lock Function

- P10113** SP, 90° Index, keypull pos. 1
- P20113** DP, 90° Index, keypull pos. 1 & 2
- P100AF** SP, 45° Index, keypull pos. 1, 2 & 3
- P200AF** DP, 45° Index, keypull pos. 1, 2 & 3
- P1011U** SP, 90° Index, keypull pos. 1 & 2

### Keying

- 2** Two nickel plated brass keys
- T** One nickel plated brass key with insert molded plastic square head and one nickel plated brass key

### Lock Type

- C** 4 tumbler lock with detent

### Lock Finish

- M** Plastic lock with matte finish

### Terminations

- 03** Solder lug
- WC** Wire lead

### Contact Material

- Q** Silver
- G** Gold over silver

### Lock Color

- 2** Black

### Key Color

- 2** Black
- NONE** Nickel plated brass

Switchlock



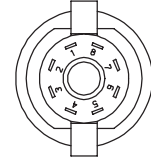
Dimensions are shown: Inch (mm)  
Specifications and dimensions subject to change

# P Series 4 Tumbler Snap-in Switchlocks

## SWITCH AND LOCK FUNCTION

NO. POLES	MODEL NO.	CONNECTED TERMINALS			KEY PULL POSITIONS	LOCK CONFIGURATION	INDEXING
		POS. 1	POS. 2	POS. 3			
SP DP	<b>P10113</b> <b>P20113</b>	8-1 8-1, 4-5	1-3 1-3, 5-7		Position 1		90°
DP	<b>P100AF</b> <b>P200AF</b>	8-1 8-1, 4-5	1-2 1-2, 5-6	2-3 2-3, 6-7	Positions 1, 2 & 3		45°
SP	<b>P1011U</b>	8-1	1-3		Positions 1 & 2		90°

TERMINAL NUMBERS

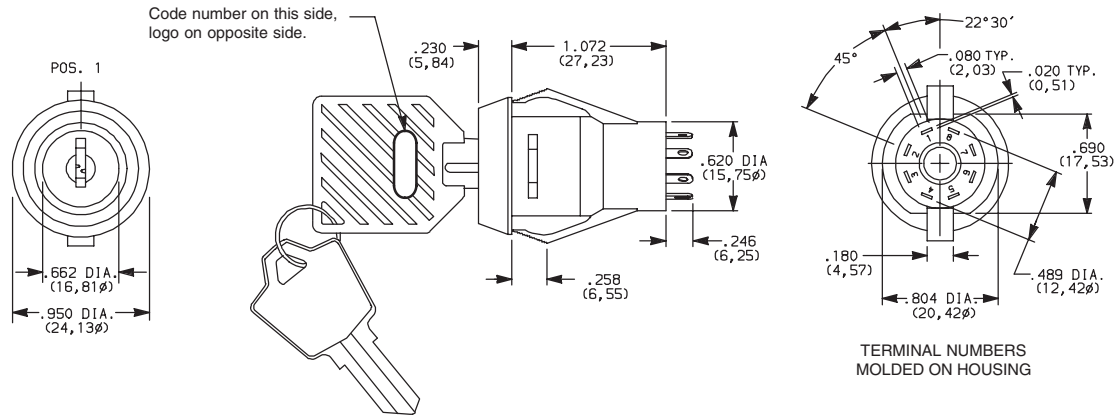


Terminal numbers molded on housing.

All models with all options when ordered with 'Q' contact material.

### LEGEND

- = Detent Positions (45° or 90°)
- ⊙ = Key pull possible in these positions.
- ⦿ = Stop Positions



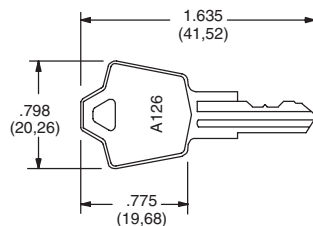
TERMINAL NUMBERS MOLDED ON HOUSING

Part number shown: P100AFTCM03Q22

## KEYING

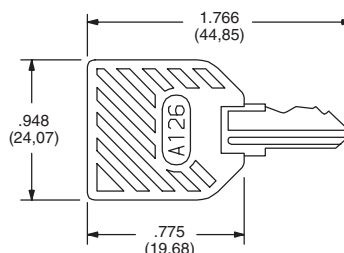
OPTION CODE	KEYING OPTIONS	CODE NO. ON KEY	CODE NO. ON LOCK
<b>2</b>	2 NICKEL PLATED BRASS KEYS	YES	NO
<b>T</b>	1 NICKEL PLATED BRASS KEYS, WITH PLASTIC INSERT MOLDED SQUARE HEAD & 1 NICKEL PLATED BRASS KEY	YES	NO

NICKEL PLATED BRASS KEY



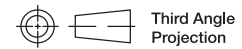
Key part number: 115140126

NICKEL PLATED BRASS KEY WITH PLASTIC INSERT MOLDED SQUARE HEAD



Key part number: 11599112602

**NOTE:** All orders keyed alike with code number on key. For more than one key code, replacement keys, or other special features, consult Customer Service Center.



Third Angle Projection

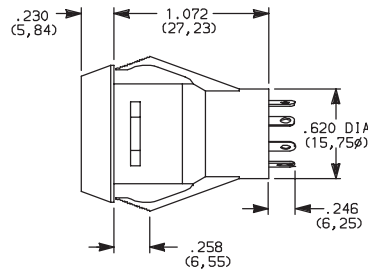
Dimensions are shown: Inch (mm)  
Specifications and dimensions subject to change



# P Series 4 Tumbler Snap-in Switchlocks

## LOCK TYPE

**C** 4 TUMBLER LOCK WITH DETENT



OPTION CODE	LOCK COLOR
<b>2</b>	BLACK

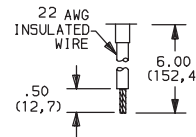
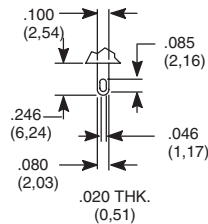
## LOCK FINISH

**M** PLASTIC LOCK WITH MATTE FINISH

## TERMINATIONS

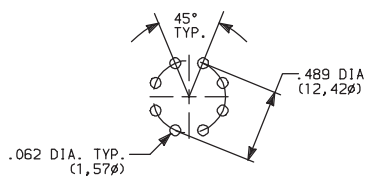
**03** SOLDER LUG

**WC** WIRE LEAD

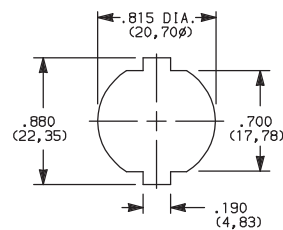


Black wire standard, other colors and lengths available, consult Customer Service Center. UL style 1015.

### PC MOUNTING



### PANEL MOUNTING



Panel Thickness: .100-.200 (2,54-5,08)

## CONTACT MATERIAL

OPTION CODE	RoHS COMPLIANT*	RoHS COMPATIBLE*	CONTACT AND TERMINAL MATERIAL	RATING	
				POWER	4 AMPS @ 125 V AC; 1 AMP @ 250 V AC (UL/CSA)
<b>Q</b>	YES	YES	SILVER <sup>2</sup>	LOW LEVEL/DRY CIRCUIT OR POWER	0.4 VA MAX. @ 20 V AC or DC MAX. or 4 AMPS @ 125 V AC; 1 AMP @ 250 V AC (UL/CSA)
<b>G</b>	YES	YES	GOLD OVER SILVER <sup>3</sup>		

\* Note: See Technical Data section of this catalog for RoHS compliant and compatible definitions and specifications.

<sup>2</sup> CONTACTS & TERMINALS: Copper, silver plated (standard with all termination options)  
<sup>3</sup> CONTACTS & TERMINALS: Copper, with gold plate over silver plate termination

All models **C&K** with all options when ordered with 'Q' contact material.



Third Angle Projection

Dimensions are shown: Inch (mm)  
 Specifications and dimensions subject to change



# P Series 4 Tumbler Snap-in Switchlocks

## AVAILABLE HARDWARE



Key Code: A126  
4 TUMBLER  
**PART NO. (ONE KEY)**  
**115140126**  
**Material:** Brass  
Finish: Nickel plate



Key Code: A126  
4 TUMBLER  
**PART NO. (ONE KEY)**  
**1159112602** BLACK  
**Material:** Brass  
Finish: Nickel plate  
6/6 Nylon insert molded head



Switchlock