

BD896 – BD898 – BD900 – BD902

SILICON DARLINGTON POWER TRANSISTORS

PNP epitaxial-base transistors in a monolithic Darlington circuit and housed in a TO-220 envelope. They are intended for use in output stages in audio equipment, general amplifiers, and analogue switching application.

NPN complements are BD895 - BD897 - BD899 - BD901

Compliance to RoHS.

ABSOLUTE MAXIMUM RATINGS

Symbol	Ratings	Value	Unit	
V_{CBO}	Collector-Base Voltage	BD896	-45	V
		BD898	-60	
		BD900	-80	
		BD902	-100	
V_{CEO}	Collector-Emitter Voltage	BD896	-45	V
		BD898	-60	
		BD900	-80	
		BD902	-100	
V_{EBO}	Emitter-Base Voltage	BD896	-5	V
		BD898		
		BD900		
		BD902		
I_C	Collector Current	BD896	-8	A
		BD898		
		BD900		
		BD902		
I_B	Base Current	BD896	-300	mA
		BD898		
		BD900		
		BD902		
P_T	Power Dissipation	$T_c = 25^\circ$	70	Watts
		$T_a = 25^\circ$	2	
T_J	Junction Temperature	150	°C	
T_s	Storage Temperature range	-65 to +150		

BD896 – BD898 – BD900 – BD902
ELECTRICAL CHARACTERISTICS

TC=25°C unless otherwise noted

Symbol	Ratings	Test Condition(s)		Min	Typ	Max	Unit	
I_{CBO}	Collector Cutoff Current	$I_E = 0$ $V_{CB} = -45\text{ V}$	$T_C = 25^\circ\text{C}$	BD896	-	-	-0.2	mA
		$I_E = 0$ $V_{CB} = -60\text{ V}$		BD898				
		$I_E = 0$ $V_{CB} = -80\text{ V}$		BD900				
		$I_E = 0$ $V_{CB} = -100\text{ V}$		BD902				
		$I_E = 0$ $V_{CB} = -45\text{ V}$	$T_C = 100^\circ\text{C}$	BD896	-	-	-2	mA
		$I_E = 0$ $V_{CB} = -60\text{ V}$		BD898				
		$I_E = 0$ $V_{CB} = -80\text{ V}$		BD900				
		$I_E = 0$ $V_{CB} = -100\text{ V}$		BD902				
I_{CEO}	Collector Cutoff Current	$I_E = 0, V_{CE} = -30\text{ V}$	BD896	-	-	-0.5	mA	
		$I_E = 0, V_{CE} = -30\text{ V}$	BD898					
		$I_E = 0, V_{CE} = -40\text{ V}$	BD900					
		$I_E = 0, V_{CE} = -50\text{ V}$	BD902					
I_{EBO}	Emitter Cutoff Current	$V_{EB} = -5\text{ V}, I_C = 0$	BD896	-	-	-2	mA	
			BD898					
			BD900					
			BD902					
V_{CEO}	Collector-Emitter Breakdown Voltage (*)	$I_C = -100\text{ mA}, I_B = 0$	BD896	-45	-	-	V	
			BD898	-60	-	-		
			BD900	-80	-	-		
			BD902	-100	-	-		
$V_{CE(SAT)}$	Collector-Emitter saturation Voltage (*)	$I_C = -3\text{ A}, I_B = -12\text{ mA}$	BD896	-	-	-2.5	V	
			BD898					
			BD900					
			BD902					

BD896 – BD898 – BD900 – BD902

ELECTRICAL CHARACTERISTICS

TC=25°C unless otherwise noted

Symbol	Ratings			Min	Typ	Max	Unit
$V_{BE(on)}$	Base-Emitter Voltage (*)	$I_C = -3\text{ A}, V_{CE} = -3\text{ V}$	BD896	-	-	-2.5	V
			BD898				
			BD900				
			BD902				
h_{FE}	DC Current Gain (*)	$V_{CE} = -3.0\text{ V}$ $I_C = -3\text{ A}$	BD896	750	-	-	-
			BD898				
			BD900				
			BD902				
V_{ECF}	C-E Diode Forward Voltage	$I_E = -8\text{ A}$	BD896	-	-	-3.5	V
			BD898				
			BD900				
			BD902				

SWITCHING TIMES

Symbol	Ratings	Test Condition(s)	Min	Typ	Max	Unit
t_{on}	turn-on time	$I_C = -3\text{ A}, V_{BE(off)} = 3.5\text{ V}$ $I_{Bon} = -I_{Boff} = -12\text{ mA}, R_L = 10\ \Omega$	-	1	-	μs
t_{off}	turn-off time		-	5	-	

(*) Pulse Width $\approx 300\ \mu\text{s}$, Duty Cycle $\angle 2.0\%$

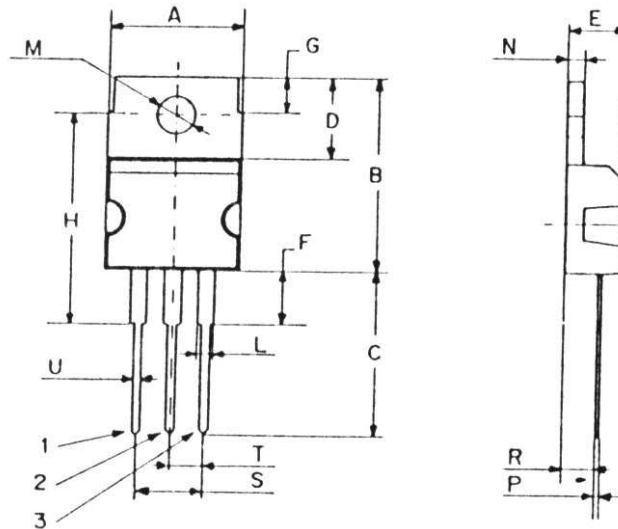
THERMAL CHARACTERISTICS

Symbol	Ratings	Value	Unit
R_{thJ-C}	Thermal Resistance Junction To Case	1.79	$^{\circ}\text{C/W}$
R_{thJ-A}	Thermal Resistance Junction To Free Air	62.5	$^{\circ}\text{C/W}$

BD896 – BD898 – BD900 – BD902

MECHANICAL DATA CASE TO-220

DIMENSIONS (mm)		
	Min.	Max.
A	9,90	10,30
B	15,65	15,90
C	13,20	13,40
D	6,45	6,65
E	4,30	4,50
F	2,70	3,15
G	2,60	3,00
H	15,75	17,15
L	1,15	1,40
M	3,50	3,70
N	-	1,37
P	0,46	0,55
R	2,50	2,70
S	4,98	5,08
T	2,49	2,54
U	0,70	0,90



Pin 1 :	Base
Pin 2 :	Collector
Pin 3 :	Emitter
Package	Collector

Revised August 2012

Information furnished is believed to be accurate and reliable. However, Comset Semiconductors assumes no responsibility for the consequences of use of such information nor for any infringement of patents or other rights of third parties which may result from its use. Data are subject to change without notice. Comset Semiconductors makes no warranty, representation or guarantee regarding the suitability of its products for any particular purpose, nor does Comset Semiconductors assume any liability arising out of the application or use of any product and specifically disclaims any and all liability, including without limitation consequential or incidental damages. Comset Semiconductors' products are not authorized for use as critical components in life support devices or systems.