

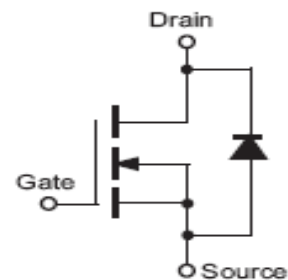
BUZ73A

N CHANNEL ENHANCEMENT MODE POWER MOS TRANSISTORS

FEATURE

This is an N-channel enhancement mode silicon gate power field effect transistor designed for applications such as switching regulators, switching converters, motor drivers, relay drivers, and drivers for high power bipolar switching transistors requiring high speed and low gate drive power.

This type can be operated directly from integrated circuits and housed in a TO-220 envelope.



ABSOLUTE MAXIMUM RATINGS

Symbol	Ratings	Value	Unit
V_{DS}	Drain-Source Voltage	200	V
V_{SD}	Drain-Source diode Voltage	<1.7	V
I_{DS}	Continuous Drain Current $T_C= 37^\circ\text{C}$	5.5	A
I_{DM}	Pulsed Drain Current $T_C= 25^\circ\text{C}$	22	A
V_{GS}	Gate-Source Voltage	20	V
$R_{DS(on)}$	Drain-Source on Resistance	0.6	Ω
P_T	Power Dissipation at Case Temperature $T_C= 25^\circ\text{C}$	40	Watts
t_J	Operating Temperature	-55 to +150	°C
t_{stg}	Storage Temperature range	-55 to +150	
t_L	Lead Temperature 1.6 mm from case for 10 seconde	300	



BUZ73A

THERMAL CHARACTERISTICS

Symbol	Ratings	Value	Unit
R_{thJC}	Thermal Resistance, chip case	<3.1	°C/W
R_{thJA}	Thermal Resistance, chip to ambient	<75	

ELECTRICAL CHARACTERISTICS

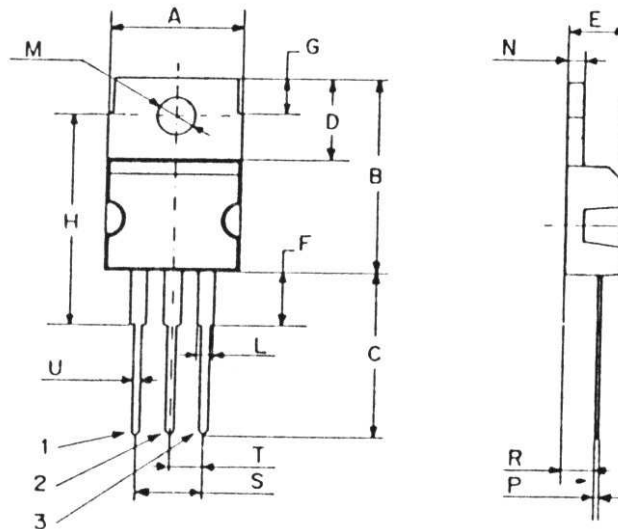
TC=25°C unless otherwise noted

Symbol	Ratings	Test Condition(s)	Min	Typ	Max	Unit
V_{DSS}	Drain-Source Breakdown Voltage	$I_D=250 \mu A, V_{GS}=0 V$	200	-	-	V
$V_{GS(th)}$	Gate-threshold Voltage	$I_D=1 mA, V_{GS}=V_{DS}$	2.1	3	4	V
I_{DSS}	Zero Gate Voltage Drain Current	$V_{DS}=200 V, V_{GS}=0 V$ $T_j=25 \text{ }^\circ\text{C}$	-	0.1	1	μA
		$V_{DS}=200 V, V_{GS}=0 V$ $T_j=125 \text{ }^\circ\text{C}$	-	1	100	
I_{GSS}	Gate-Source leakage Current	$V_{GS}=20 V, V_{DS}=0 V$	-	10	100	nA
$R_{DS(on)}$	Drain-Source on Resistance	$I_D=4.5 A, V_{GS}=10 V$	-	0.5	0.6	Ω
g_{fs}	Transconductance	$V_{DS} > 2 * I_D * R_{DS(on)max}$ $I_D=4.5 A$	3	4.2	-	S
C_{ISS}	Input Capacitance	$V_{GS}=0 V, V_{DS}=25 V$ $f=1 MHz$	-	400	530	pF
C_{OSS}	Output Capacitance		-	85	130	
C_{RSS}	Reverse transfer Capacitance		-	45	70	
$t_{d(on)}$	Turn-on Delay Time	$V_{DD}=30 V, V_{GS}=10 V$ $I_D=3 A$ $R_{GS}=50 \Omega$	-	10	15	ns
t_r	Rise time		-	40	60	
$t_{d(off)}$	Turn-off Delay Time		-	55	75	
t_f	Fall Time		-	30	40	

BUZ73A

MECHANICAL DATA CASE TO-220

DIMENSIONS (mm)		
	Min.	Max.
A	9,90	10,30
B	15,65	15,90
C	13,20	13,40
D	6,45	6,65
E	4,30	4,50
F	2,70	3,15
G	2,60	3,00
H	15,75	17,15
L	1,15	1,40
M	3,50	3,70
N	-	1,37
P	0,46	0,55
R	2,50	2,70
S	4,98	5,08
T	2,49	2,54
U	0,70	0,90



Pin 1 :	Gate
Pin 2 :	Drain
Pin 3 :	Source

Revised September 2012

Information furnished is believed to be accurate and reliable. However, Comset Semiconductors assumes no responsibility for the consequences of use of such information nor for any infringement of patents or other rights of third parties which may result from its use. Data are subject to change without notice. Comset Semiconductors makes no warranty, representation or guarantee regarding the suitability of its products for any particular purpose, nor does Comset Semiconductors assume any liability arising out of the application or use of any product and specifically disclaims any and all liability, including without limitation consequential or incidental damages. Comset Semiconductors' products are not authorized for use as critical components in life support devices or systems.