

Cybergate™ 2111

Data Access Arrangement (DAA) Module



DESCRIPTION

CP Clare's CYG2111 Series DAA module provides a complete telephone line interface circuit in a small 1.07" x 1.07" x 0.4" package. The module provides a fast and cost effective solution for designs that require an interface to the telephone line. The CYG2111 is specifically designed to meet PTT and safety regulations for CTR-21 regulated countries.

APPLICATIONS

- Home medical devices
- Plant monitoring equipment
- Security/alarm systems
- Utility meters
- Modems
- Voicemail systems
- Vending machines
- Elevator control boxes
- Network routers
- PBX Systems
- PC mother boards
- Telephony applications
- Digital telephone answering machines

FEATURES

- Low distortion transformer signal coupling
- Complete ring detector circuit
- Low power hookswitch
- Electronic inductor/gyrator circuit
- Surge protection
- V.32 bis /V.34 compatible
- PTT and safety regulations for CTR-21 countries
- PC board mountable

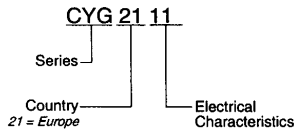
APPROVALS

- BSI Certified

RATINGS @25°C

Parameter	Min	Typ	Max	Units
Isolation Voltage	-	-	1500	V_{RMS}
Operational Temperature	0	-	70	°C
Storage Temperature	0	-	100	°C
Relative Humidity (Non-Condensing)	10	-	85	%
Soldering Temperature	-	-	260	°C
Tip/Ring Load Current (continuous)	-	-	60	mA
Hookswitch LED Drive Current	-	-	50	mA
Hookswitch LED Reverse Voltage	-	-	5	V
Ring Detect Phototransistor Voltage V_{cc}	-	-	20	V

ORDERING INFORMATION



North America
Tel: 1-800-CPCLARE
Fax: 978-524-4900

Europe
Tel: +32-11-300868
Fax: +32-11-300890

Asia
Tel: 886-2-2523-6368
Fax: 886-2-2523-6369

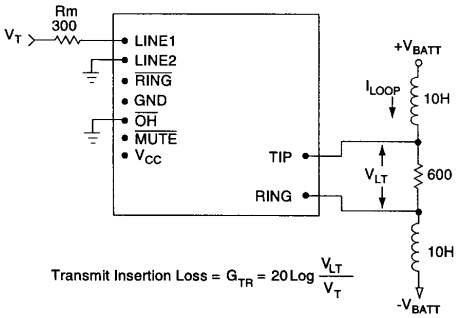
Japan
Tel: 03-3983-2212
Fax: 03-3980-2213

SPECIFICATIONS

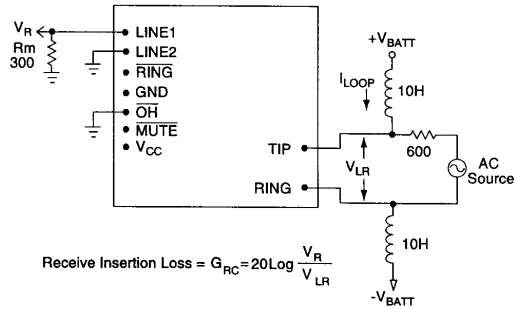
PARAMETERS	CONDITIONS	MIN	TYP	MAX	UNITS
DC Electrical Characteristics					
On-Hook Impedance	V _{Tip-Ring} =100VDC	10	-	-	MΩ
On-Hook Line Leakage Current	V _{Tip-Ring} =100VDC	-	-	10	μA
Off-Hook Relay Supply Current	V _{cc} =5V	7	8	9	mA
Hookswitch Power Source	-	4.75	5.0	20	V
DC Loop Current	-	5	-	60	mA
Mute Relay Supply Current	V _{cc} =5V	7	8	9	mA
AC Signal Path Electrical Characteristics					
Return Loss	f=300-3500Hz	14	25	-	dB
Insertion Loss					
Transmit	Test Circuit 1	-	-	7.5	dB
Receive	Test Circuit 2	-	-	7.5	dB
Frequency Response	f=300-3500Hz	-0.25	-	+0.25	dB
Longitudinal Balance					
On-Hook	-	60	-	-	dB
Off-Hook	-	40	-	-	dB
Total Harmonic Distortion	f=350Hz, P=-10dBm	-	-80	-	dB
Secondary Load Impedance	Line 1 and Line 2	-	300	-	Ω
Primary Source Impedance	Tip and Ring	-	600	-	Ω
Ring Detection Circuit Characteristics					
Ringing Voltage Detection Range	-	29	-	-	V _{RMS}
Ringing Frequency Detection Range	-	15	-	70	Hz
Ringer Impedance	f=25Hz	-	18	-	KΩ
RING Output Voltage (Pulsed)	V _{cc} =+5V				
Logic '0', Ring present		-	-	0.8	V
Logic '1', Ring not present		-	-	V _{cc}	V
Surge, Transient, and Isolation Characteristics					
Surge Protection Voltage Tip and Ring	-	-	-	300	V
Isolation Voltage (Pins 1-7 to 10-11)	60 Seconds	-	-	1500	V _{RMS}

TEST CIRCUITS

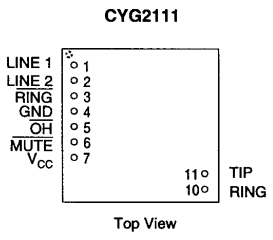
1. CYG2111 Transmit Insertion Loss



2. CYG2111 Receive Insertion Loss



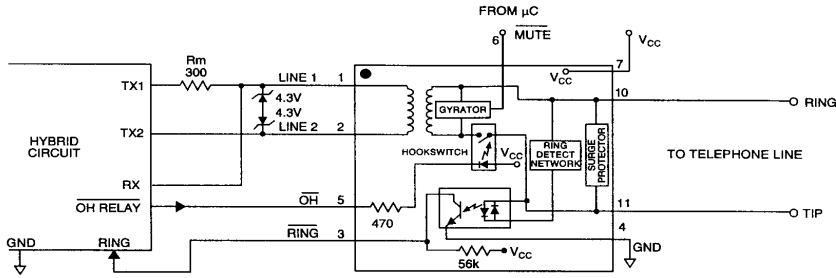
PACKAGE PINOUTS



CYG2111 Pinouts & Definitions

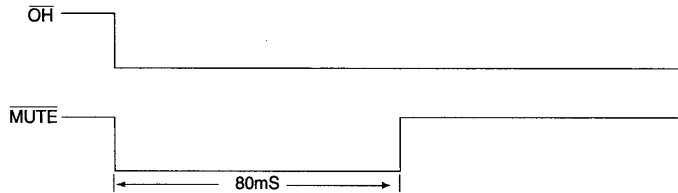
PIN#	I/O	Name	Function
1	I/O	LINE1	Transformer isolated audio signal coupling path for the telephone line.
2	I/O	LINE2	Transformer isolated audio signal coupling path for the telephone line.
3	O	RING	Active LOW indicates an incoming ring signal. This is pulsed LOW by the AC ring signal at the ring frequency.
4	I	GND	Connected to host system ground.
5	I	OH	Driving this pin LOW asserts the off-hook condition. The hookswitch LED is current limited by an internal 470Ω resistor.
6	I	MUTE	Driving this pin LOW activates the mute relay for pulse dialing. See Figure 1. The mute relay LED is current limited by an internal 470Ω resistor.
7	I	V _{cc}	Provides power to the hookswitch LED. Typically +5V for ≈8mA LED current. LED is current limited by an internal 470Ω resistor. V _{cc} should not exceed 20V.
11	I/O	RING	Connection to telephone line Ring conductor.
10	I/O	TIP	Connection to telephone line Tip conductor.

TYPICAL APPLICATION



OFF-HOOK TRANSIENT REQUIREMENT

In order to meet Section 4.6.1 of the CTR-21 requirement, it is necessary to assert the $\overline{\text{MUTE}}$ pin of the CYG2111 for a duration of 80mS after the $\overline{\text{OH}}$ pin is driven low as shown in Figure 1. This can be accomplished via the host firmware or external hardware as shown in Figures 2 and 3 respectively.



$\overline{\text{MUTE}}$ and $\overline{\text{OH}}$ Timing
Figure 1

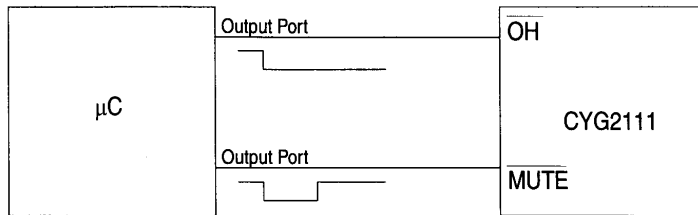
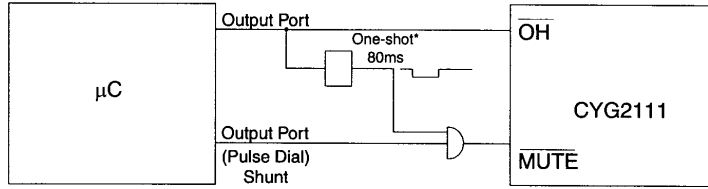


Figure 2



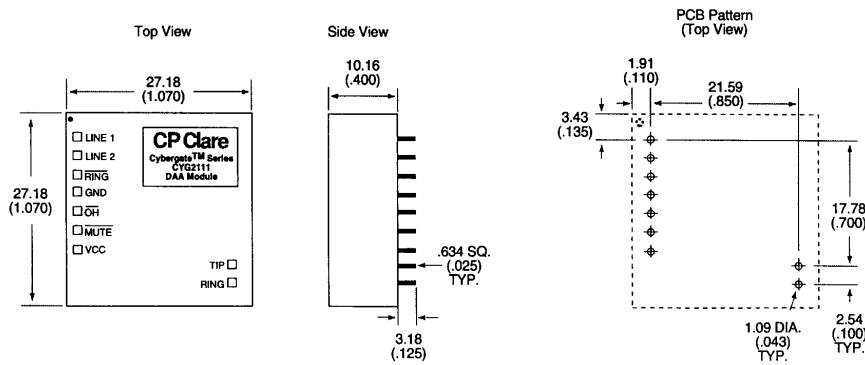
* Micrel MIC1555 or Equivalent

Figure 3

Asserting the MUTE pin causes the internal gyrator circuit in the CYG2111 to be bypassed, allowing low impedance pulse dialing to be performed by pulsing the OH pin. In Figure 2, the microcontroller output port going to the MUTE pin is used as a shunt for low impedance dialing and is asserted for 80mS when the OH signal is asserted. This method is preferred when the user has control of the host firmware and can easily write a subroutine to accomplish this function.

For users that do not have easy access to the modem firmware, some external hardware can be added to accomplish the same function. Figure 3 shows a monostable (one-shot) such as a 555 timer which is designed to generate an 80mS low going pulse upon the assertion of the OH signal. This 80mS pulse is ANDed with the low impedance pulse dial shunt signal which overrides the 80mS signal when pulse dialing is enabled. The pulse dial shunt signal is included as a standard output pin in most modem chipsets. This pin is activated when an ATDP command is issued to the modem.

MECHANICAL DIMENSIONS



NORTH AMERICA

North American Sales Office
CP Clare Corporation
601B Campus Drive
Arlington Heights, IL 60004
Tel: 1-847-797-7000
Fax: 1-847-797-7023
Toll Free: 1-800-CPCLARE

Eastern Regional Sales
CP Clare Corporation
78 Cherry Hill Drive
Beverly, MA 01915
Tel: 1-978-524-6700
Fax: 1-978-524-4900
Toll Free: 1-800-CPCLARE

Mid-American Regional Sales
CP Clare Corporation
601B Campus Drive
Arlington Heights, IL 60004
Tel: 1-847-797-7000
Fax: 1-847-797-7023
Toll Free: 1-800-CPCLARE

Northwestern Regional Sales
CP Clare Corporation
2010 Crow Canyon Place
Suite 100
San Ramon, CA 94583
Tel: 1-510-277-3422
Fax: 1-510-277-3423
Toll Free: 1-800-CPCLARE

Southwestern Regional Sales
CP Clare Corporation
10061 Talbert Avenue
Suite 210
Fountain Valley, CA 92708
Tel: 1-714-378-1212
Fax: 1-714-378-1210
Toll Free: 1-800-CPCLARE

Canadian Regional Sales
Clare Canada Ltd.
3425 Harvester Road
Suite 202
Burlington, Ontario L7N 3N1
Tel: 1-905-333-9066
Fax: 1-905-333-1824

EUROPE

European Sales Office
CP Clare nv
Bampsplaan 17
B-3500 Hasselt (Belgium)
Tel: 32-11-300868
Fax: 32-11-300890

France
CP Clare France s.a.r.l.
9/11, rue Georges Enesco
F-94008 Creteil Cedex
Tel: 33-1-43991522
Fax: 33-1-43991524

Germany
CP Clare Elektronik GmbH
Leonberger Strasse 20
D-71638, Ludwigsburg
Tel: 49-7141-9543-0
Fax: 49-7141-9543-20

Italy
C.L.A.R.E.s.a.s.
Via C. Colombo 10/A
I-20066 Melzo (Milano)
Tel: 39-2-95737160
Fax: 39-2-95738829

Sweden
Clare Sales
Comptronic AB
Box 167
S-16329 Spånga
Tel: 46-862-10370
Fax: 46-862-10371

United Kingdom
Clare UK Sales
Marco Polo House
Cook Way
Bindon Road
Taunton
UK-Somerset TA2 6BG
Tel: 44-1-823 352541
Fax: 44-1-823 352797

ASIA PACIFIC

Asian Sales Office
CP Clare Corporation
Room N1016, Chia-Hsin, Bldg II,
10F, No. 96, Sec. 2
Chung Shan North Road
Taipei, Taiwan R.O.C.
Tel: 886-2-2523-6368
Fax: 886-2-2523-6369

JAPAN

Japanese Sales Office
CP Clare Corporation
Tosei Building 5F
2-23-1, Ikebukuro, Toshima-ku
Tokyo 171
Tel: 03-3980-2212
Fax: 03-3980-2213

HEADQUARTERS

CP Clare Corporation
78 Cherry Hill Drive
Beverly, MA 01915
Tel: 1-978-524-6700
Fax: 1-978-524-4900
Toll Free: 1-800-CPCLARE

<http://www.cpclare.com>

CP Clare Corporation makes no assertion or warranty that the circuitry and the uses thereof disclosed herein are non-infringing on any valid US or foreign patents. CP Clare assumes no liability as a result of the use of said specifications and reserves the right to make changes to specifications without notice. CP Clare does not authorize or warrant any CP Clare device for use in life support devices and/or systems. Contact your nearest CP Clare Sales Office for the latest specifications.
