

## Type 4X Stainless Steel Wallmount Enclosure w/ Sloped Top *ST*

### SS Series

#### Hinge Door with Quarter Turn



### Application

- Designed to enclose electrical and/or electronic equipment and protect against harsh, industrial environments for wallmount applications.
- Sloped top prevents water from resting on top as well as providing potential for controls mounting.
- Impressive styling features like hidden hinges and attractive latching systems make the Eclipse a suitable addition to any high-tech equipment installation.
- A wide range of sizes and practical accessories make this product line a complete package.

### Standards

- UL 508 Type 3R, 4, 4X and 12
- CSA Type 3R, 4, 4X and 12
- Complies with
  - NEMA 3R, 4, 4X, 12 and 13
  - IEC 60529, IP 66

### Construction

- Formed 304 stainless steel.
- Continuously welded seams ground smooth.
- Door stiffeners are provided where required for increased strength and rigidity - designed to also permit additional mounting options.
- Formed lip on enclosure to exclude flowing liquids and contaminants.
- Door latches feature the added safety of quarter turn slot requiring use of tool for opening.
- Doors may be easily removed for modifications and are interchangeable.
- Seamless poured-in place gasket.
- Collar studs provided for mounting inner panel.
- Includes hardware kit with panel mounting nuts and sealing washers for wall mounting holes.
- Bonding stud provided on door and grounding stud installed in enclosure.
- Hinges are 304 stainless.
- Stainless steel hinge pins and quarter turns.
- Door alignment guide provided on 36" wide enclosures.

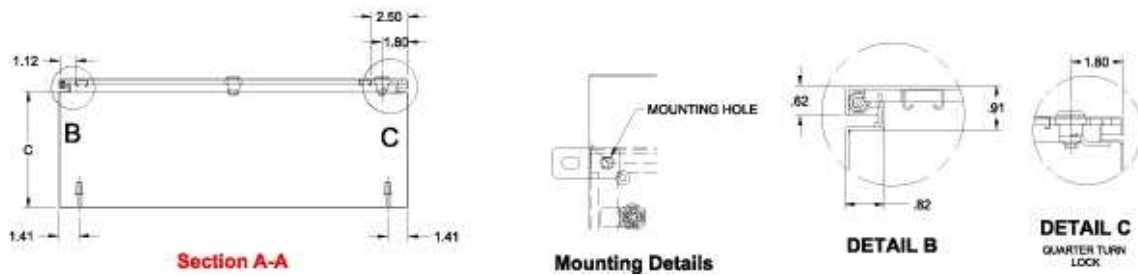
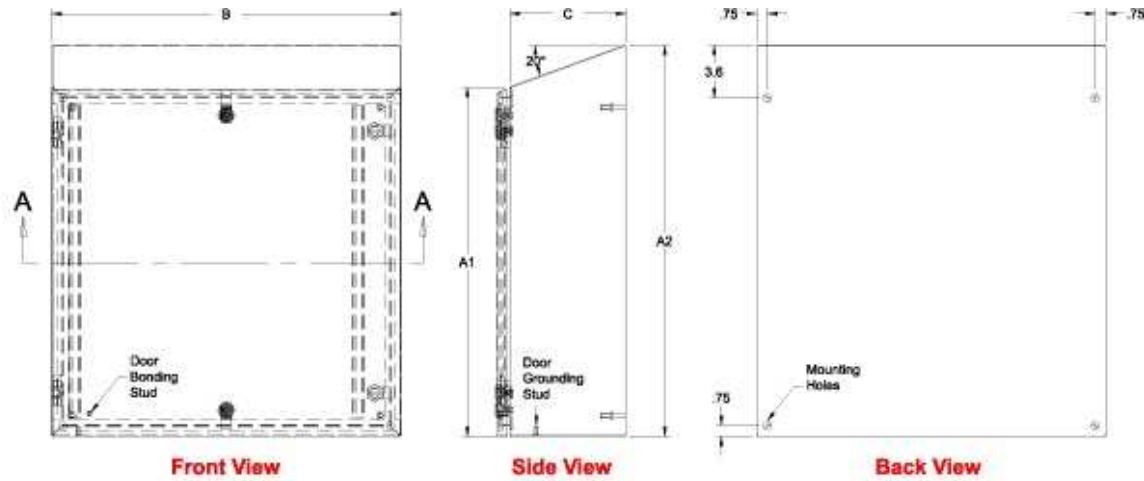
### Finish

- Cover and enclosure are natural stainless steel with a smooth brushed finish.

### Accessories

- [Cooling Products](#)
- [Blowers and Fans](#)

- [Breather Kits](#)
- [DIN Rail Mounting Kit](#)
- [Drip Shield Kit](#)
- [Heaters](#)
- [Inner Panels](#)
- [Literature Pocket](#)
- [Padlock Adaptor](#)
- [Swing Frame](#)
- [Replacement Hinge Pins](#)
- [Quarter Turn Assemblies](#)
- [Type 4 Hardware Kits](#)
- [DIN Rails](#)
- [Door Stop Kit](#)
- [Filtered Fans](#)
- [Handles](#)
- [Quarter Turn Inserts and Keys](#)
- [Mounting Foot Kit](#)
- [Swing Panel](#)
- [Rear Hole Plugs](#)
- [Temperature Controls](#)
- [Touch-Up Spray Paint](#)



Part No.	Overall Dimensions					Door/Body Gauge	Opt. Panel Part No.	Latch Qty	Hinge Qty
	A1	A2	B	C	F				
ST161208SS	16.00	18.90	12.00	8.00	10.00	14	EP1612	2	2
ST161608SS	16.00	18.90	16.00	8.00	10.00	14	EP1616	2	2
ST201608SS	20.00	22.90	16.00	8.00	14.00	14	EP2016	2	2
ST201612SS	20.00	24.30	16.00	12.00	14.00	14	EP2016	2	2
ST202008SS	20.00	22.90	20.00	8.00	14.00	14	EP2020	2	2
ST202012SS	20.00	24.30	20.00	12.00	14.00	14	EP2020	2	2
ST242008SS	24.00	26.90	20.00	8.00	18.00	14	EP2420	2	2
ST242408SS	24.00	26.90	24.00	8.00	18.00	14	EP2424	4	2
ST242412SS	24.00	28.30	24.00	12.00	18.00	14	EP2424	4	2
ST302408SS	30.00	32.90	24.00	8.00	12.00	14	EP3024	4	3
ST302412SS	30.00	34.30	24.00	12.00	12.00	14	EP3024	4	3
ST303008SS	30.00	32.90	30.00	8.00	12.00	14	EP3030	4	3
ST363008SS	36.00	38.90	30.00	8.00	15.00	14	EP3630	5	3
ST363012SS	36.00	40.30	30.00	12.00	15.00	14	EP3630	5	3
ST363016SS	36.00	41.80	30.00	16.00	15.00	14	EP3630	5	3
ST363612SS	36.00	40.30	36.00	12.00	15.00	14	EP3636	5	3
ST483616SS	48.00	53.80	36.00	16.00	14.00	14	EP4836	5	4
ST603616SS <sup>1</sup>	60.00	65.80	36.00	16.00	18.00	14	EP6036	5	4

<sup>1</sup> Back is 10 gauge stainless steel.

*Data subject to change without notice.*

© 2012. Hammond Manufacturing Ltd. All rights reserved.