

## Type 4X Stainless Steel Freestanding Enclosure 1418 N4 FS QT SS

Series

Continuous Hinge Door with Quarter Turn



### Application

- Designed to house electrical, electronic, hydraulic or pneumatic controls with provision for panel mounting or rack mounting of equipment.
- Provides protection where equipment may be hosed down or otherwise be very wet, or in specific applications where corrosion is a serious problem.
- A variety of inner panels, rack mounting rails and swing out frames are available to provide flexibility in mounting arrangements.

### Standards

- UL 508 Type 3R, 4, 4X and 12
- CSA Type 3R, 4, 4X and 12
- Complies with
  - NEMA Type 3R, 4, 4X, 12 and 13
  - IEC 60529, IP66

### Construction

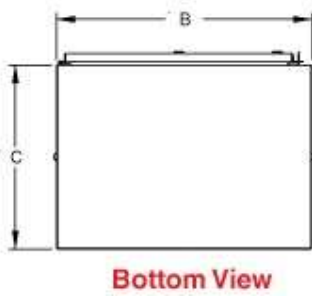
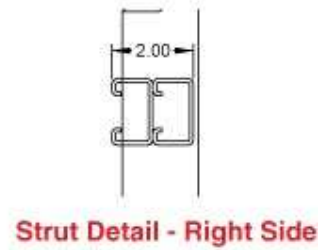
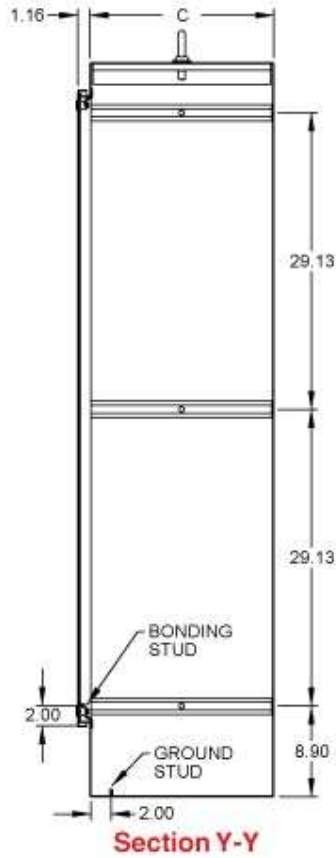
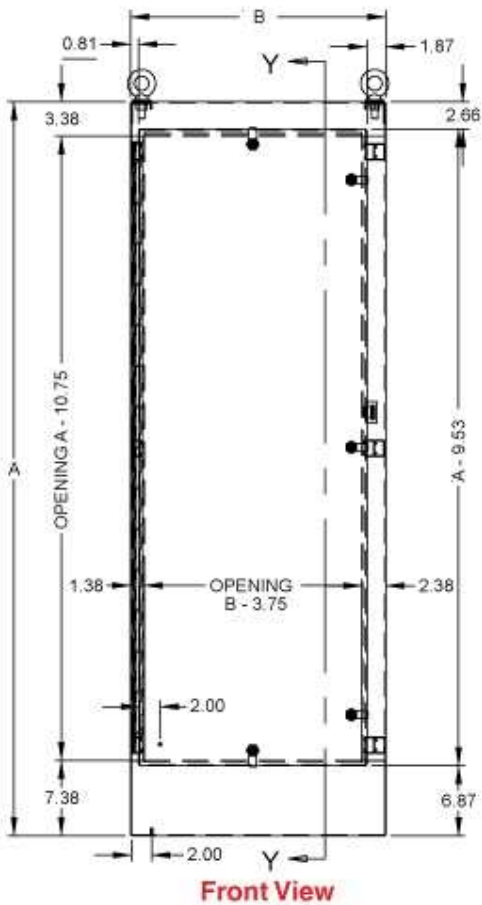
- Formed 12 gauge 304 or 316 stainless steel.
- Smooth, continuously welded seams without knockouts, cutouts or holes.
- Heavy duty stainless steel lifting eyebolts are provided with reinforcing support angles.
- Doors are supported with heavy gauge continuous hinges.
- Doors are secured with quarter turn latches.
- Seamless poured-in place gasket.
- Mounting channels are welded on the inside of the enclosure for mounting of optional inner panels or rack equipment rails.
- A grounding stud is provided in the enclosure and a bonding stud is provided on the door.

### Finish

- Cover and enclosure are natural stainless steel with a smooth brushed finish.
- Optional inner panels are finished in white powder paint.

### Accessories

- [Cooling Products](#)
- [Door Stop Kit](#)
- [Door Support Guide](#)
- [Heaters](#)
- [Lighting](#)
- [Swing Out Frames](#)
- [Window Kits](#)
- [Breather Kits](#)
- [Drip Shield Kit](#)
- [Filtered Fans](#)
- [Inner Panels](#)
- [Panel Rails](#)
- [Temperature Controls](#)



304 S.S. Part No.	316 S.S. Part No.	A	B	C	Opt. Full Panel	Ship Wt. (lbs)
1418N4SSW18QT	1418N4S16W18QT	72.06	25.06	18.06	72WFW	290
1418N4SSX24QT	1418N4S16X24QT	72.06	31.06	24.06	72XFW	350
1418N4SSY24QT	1418N4S16Y24QT	72.06	37.06	24.06	72YFW	390

Data subject to change without notice.