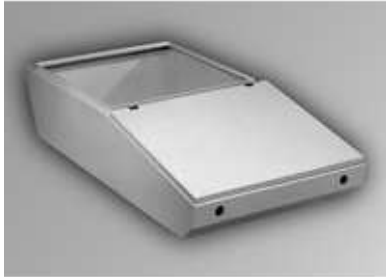


## **Type 4, 4X Mild Steel and Stainless Steel Desk Units** *Series 2000*

### **Modular Console System**



### **Application**

- Generally used in combination with other modular console components (ie. base, pedestal, and/or turret).
- Provides an ideal sloped surface for mounting keyboards, switches, indicator lights, and/or dials.
- Open top permits mounting of a turret (usually for CRT applications) or an optional hinged desk cover (providing a flat, sturdy desk surface).
- Available in either Standard (will support Standard Turret only) or Deep (will support Deep Turret only) format.
- Smooth lines and clean edges provide an attractive, contemporary appearance.

### **Standards**

- UL 508 Type 3R, 4, 12
- CSA Type 3R, 4, 12, 13
- EIA RS-310-D
- Complies with
  - NEMA Type 3R, 4, 12
  - IEC 60529, IP66

### **Construction**

- UL 508 Type 3R, 4, 4X, 12
- CSA Type 3R, 4, 4X, 12
- Complies with
  - NEMA Type 3R, 4, 4X, 12
  - IEC 60529, IP66

### **Finish**

- Formed 14 gauge steel bodies with 14 gauge steel lid.
- Also offered with formed 14 gauge 304 stainless steel bodies with 14 gauge 304 stainless steel lid.
- Smooth, continuously welded seams without knockouts or holes.
- Body stiffeners are provided where required for increased strength and rigidity.
- Offered in 4 widths 24", 36", 48" and 60".
- Solid sides and back, lid on sloped top area, open on flat top area, bottom is solid under lid area and open under flat top area.
- Deep Desk has a 6.7" deeper top opening than standard desk allowing for support of Deep Turret - see drawings as Deep Desk has different profile (angled back) from Standard Desk (flat back.)
- Lid profiles provide increased strength.
- Formed lip on enclosure excludes flowing liquids and contaminants.
- Slotted quarter turn oil-tight latches secure the lid, with optional tamper resistant and locking latches available.
- Stainless steel models utilize stainless steel hardware.
- Oil resistant gaskets are permanently secured.

- Features several internal stud locations for mounting Desk Inner Panel.
- A bonding screw is provided on the lid and a grounding stud is provided in the enclosure.

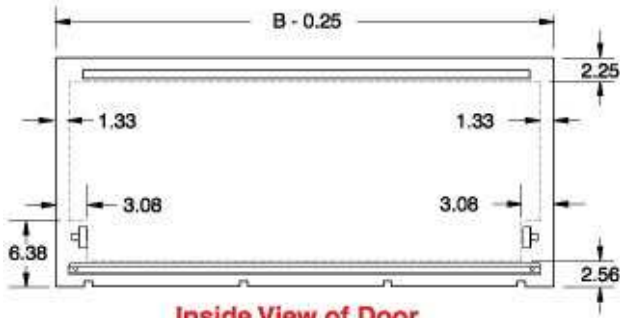
### Accessories

- Available in RAL 7035 light gray textured powder coating and natural stainless steel with a smooth, brushed finish.
- Desk covers available in same finishes.

### Accessories

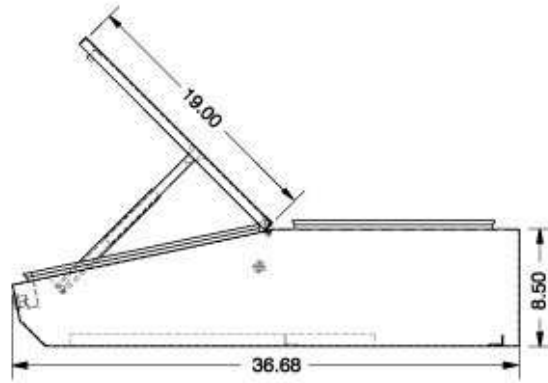
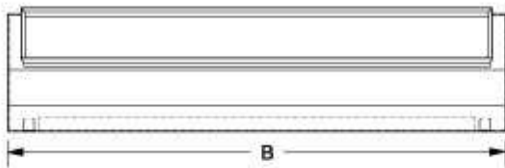
- [Desk Cover](#)
- [Desk Inner Panel](#)

#### Standard Desk Unit

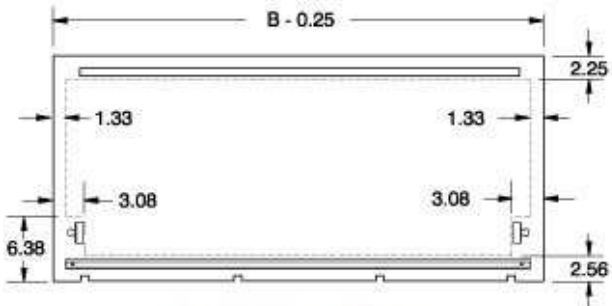


#### Inside View of Door

Clearance area for mounting hardware on desk unit sloping door

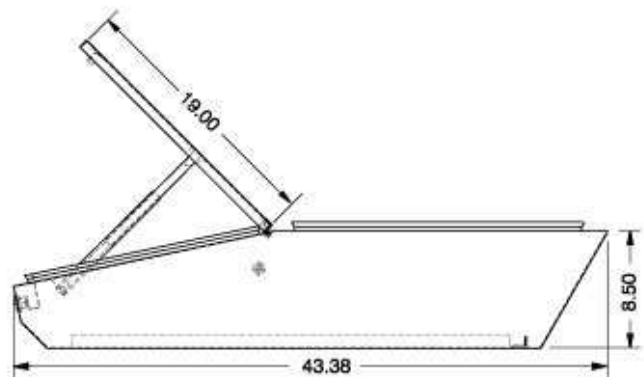
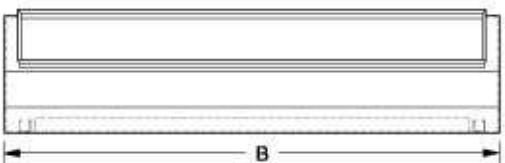


#### Deep Desk Unit



#### Inside View of Door

Clearance area for mounting hardware on desk unit sloping door



RAL 7035 Light Gray	Stainless Steel	
Part No.	Part No.	B

RAL 7035 Light Gray	Stainless Steel	
Part No.	Part No.	B

<b>2CLD82436</b>	<b>2CSD82436</b>	24.00
<b>2CLD83636</b>	<b>2CSD83636</b>	36.00
<b>2CLD84836</b>	<b>2CSD84836</b>	48.00
<b>2CLD86036</b>	<b>2CSD86036</b>	60.00

<b>2CLD82443</b>	<b>2CSD82443</b>	24.00
<b>2CLD83643</b>	<b>2CSD83643</b>	36.00
<b>2CLD84843</b>	<b>2CSD84843</b>	48.00
<b>2CLD86043</b>	<b>2CSD86043</b>	60.00

*Data subject to change without notice.*

© 2012. Hammond Manufacturing Ltd. All rights reserved.