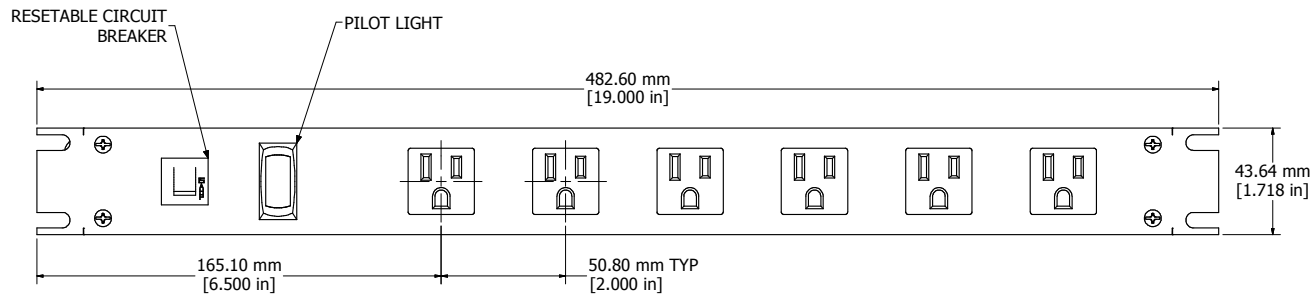
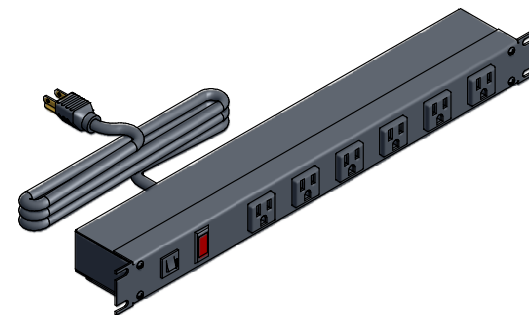


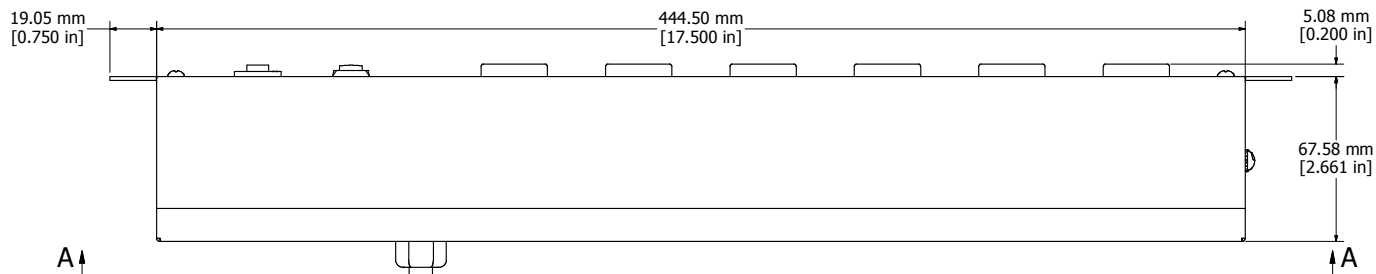
8 | 7 | 6 | 5 | 4 | 3 | 2 | 1



ASSEMBLY - VIEW FROM FRONT

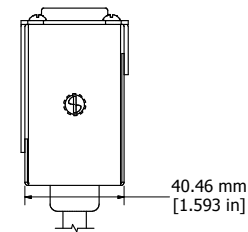


ISOMETRIC VIEW

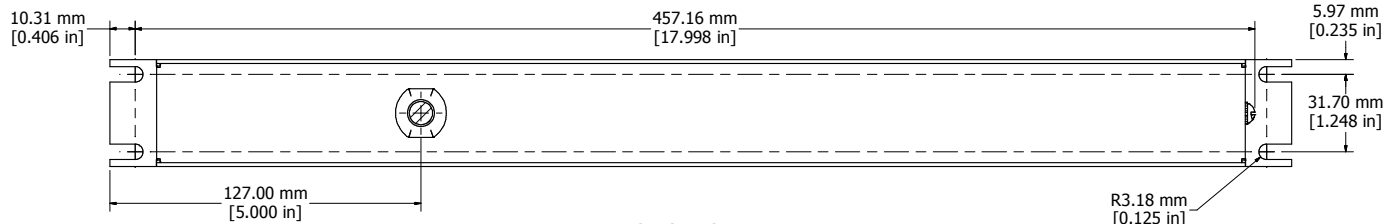


6' FOOT POWER CORD (NEMA 5-15P)

ASSEMBLY - VIEW FROM BOTTOM



ASSEMBLY - VIEW FROM SIDE



SECTION A-A

**1582T6A1BKRA**

Finish - Front - Black Painted Steel
Back - Black Painted Steel
Rated - 125 VAC, 60 Hz, 15 Amps
Approvals - CSA Certified Standards C22.2 (No. 21-95, 42-99)
- UL Recognized Standard UL1363

**Cord Length**

1582T6A1BKRA - 6' Foot Power Cord (NEMA 5-15P)
1582T6B1BKRA - 15' Foot Power Cord (NEMA 5-15P)



**HAMMOND  
MANUFACTURING™**

**1582T6A1BKRA**

www.hammondmfg.com

8 | 7 | 6 | 5 | 4 | 3 | 2 | 1