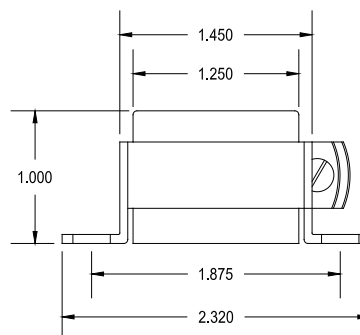
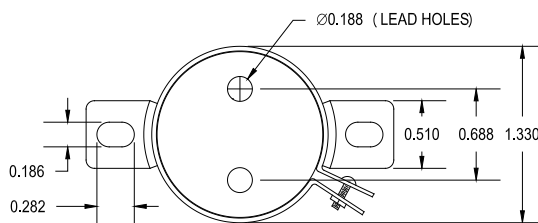


# 140NEX

CHASSIS MOUNT – SHIELDED  
IMPEDANCE MATCHING TRANSFORMER

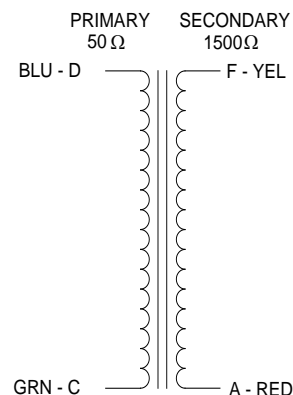
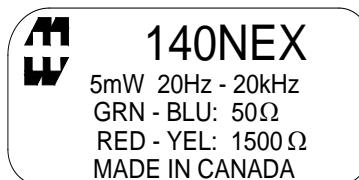
This transformer operates in the 20 Hz to 20 KHz range. The metal can provides excellent shielding from a broad range of external sources. The nickel core provides high permeability combined with low losses.

Typical applications Input/output Isolation, Line Matching, Driver, Hybrid applications.

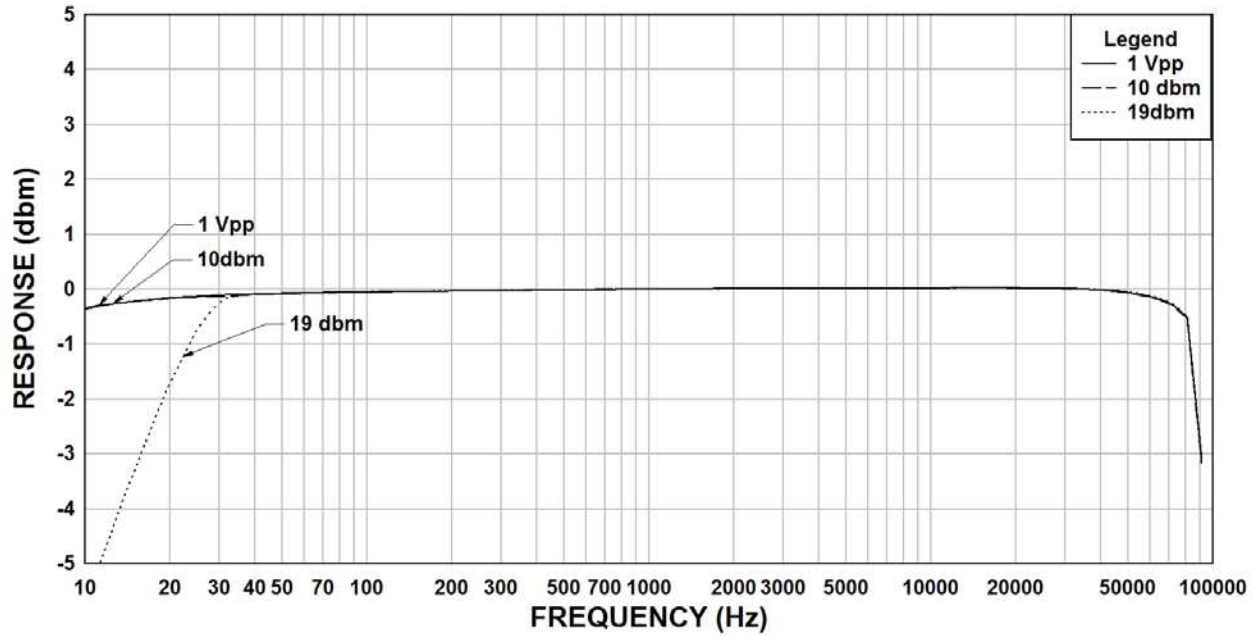


## ELECTRICAL SPECIFICATIONS

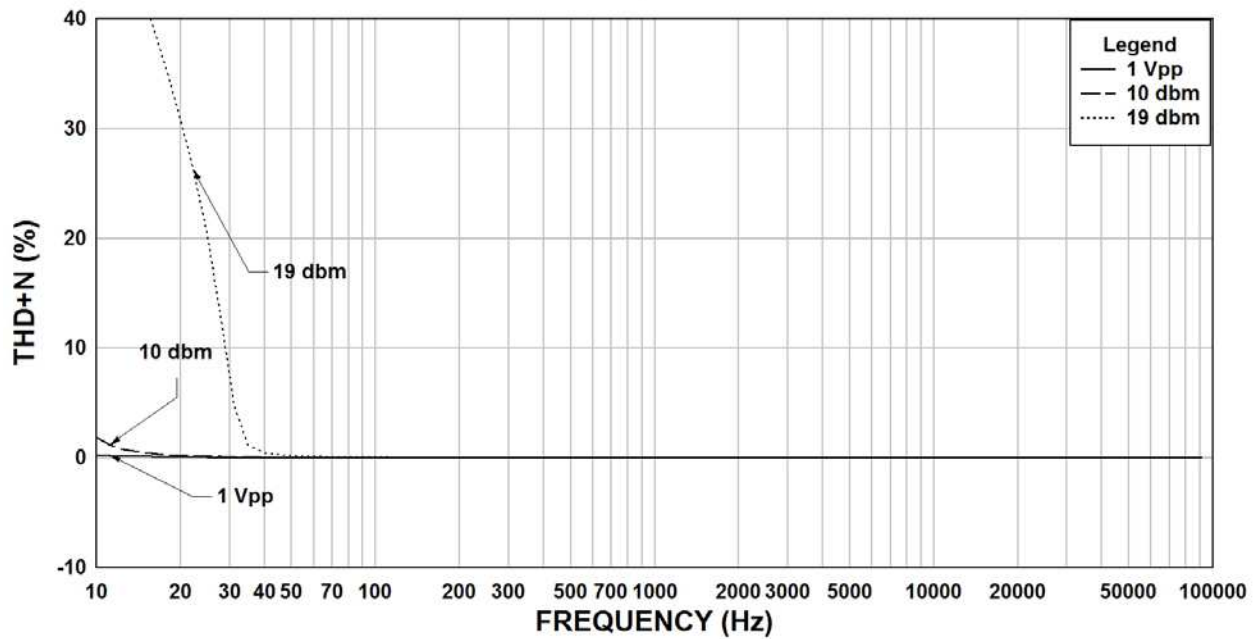
<u>Characteristic</u>	<u>Typical</u>
Input Impedance	4 Ω
Output Impedance	60,000 Ω
Output Power	10.0 dbm
DCR	
Primary	5.30 Ω
Secondary	116.5 Ω
Inductance	@ 1.0 kHz, 1.0 V OC
Primary	326 mH
Secondary	9.30 H
Impedance	@ 1.0 kHz, 1.0 V OC
Primary	2.83 kΩ
Secondary	79.0 kΩ
Frequency Response	±1db from 20 Hz to 20KHz
Turns ratio	1:5.47
Insertion Loss	< 0.9 db
Return Loss	28.0 db
Longitudinal balance	-70 db
Dielectric Strength	500 Vrms



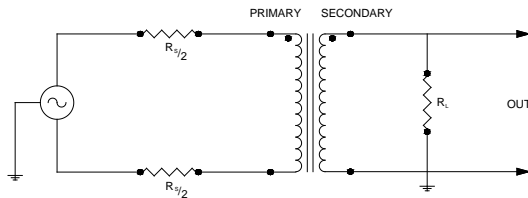
### 140NEX Rs=50, RI=1500 Frequency Response



### 140NEX Rs=50, RI=1500 THD+N



#### TYPICAL TEST CIRCUIT



Measurement instruments  
 Hp4192a impedance analyzer  
 Hp3456a DVM  
 Keithley 2002 DVM  
 D scope series iii audio analyzer

This drawing and the information in it is the property of Hammond Manufacturing. It may not be reproduced, transmitted or used in any manner whatsoever without the written permission of Hammond Manufacturing. Data subject to change without notice.