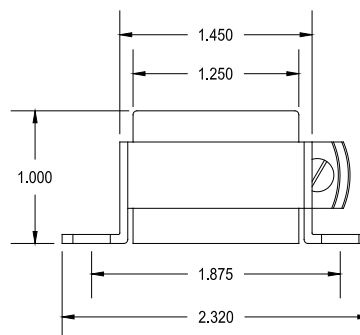
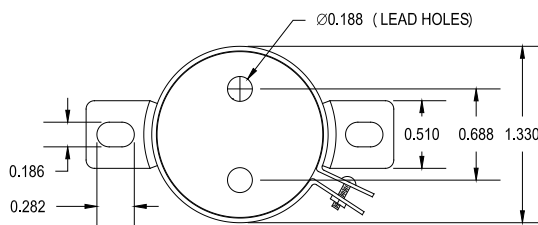


# 140REX

CHASSIS MOUNT – SHIELDED  
IMPEDANCE MATCHING TRANSFORMER

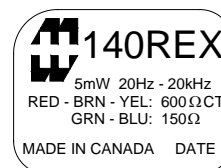
This transformer operates in the 20 Hz to 20 KHz range. The metal can provides excellent shielding from a broad range of external sources. While the nickel core provides high permeability combined with low losses.

Typical applications Input/output Isolation, Line Matching, Driver, Hybrid applications.

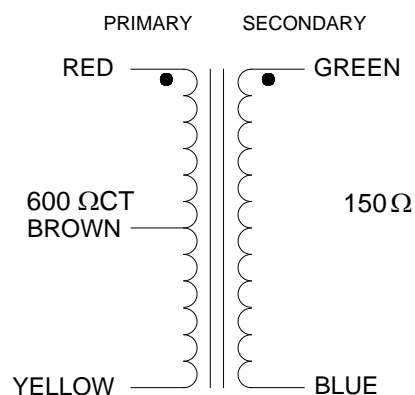


## ELECTRICAL SPECIFICATIONS

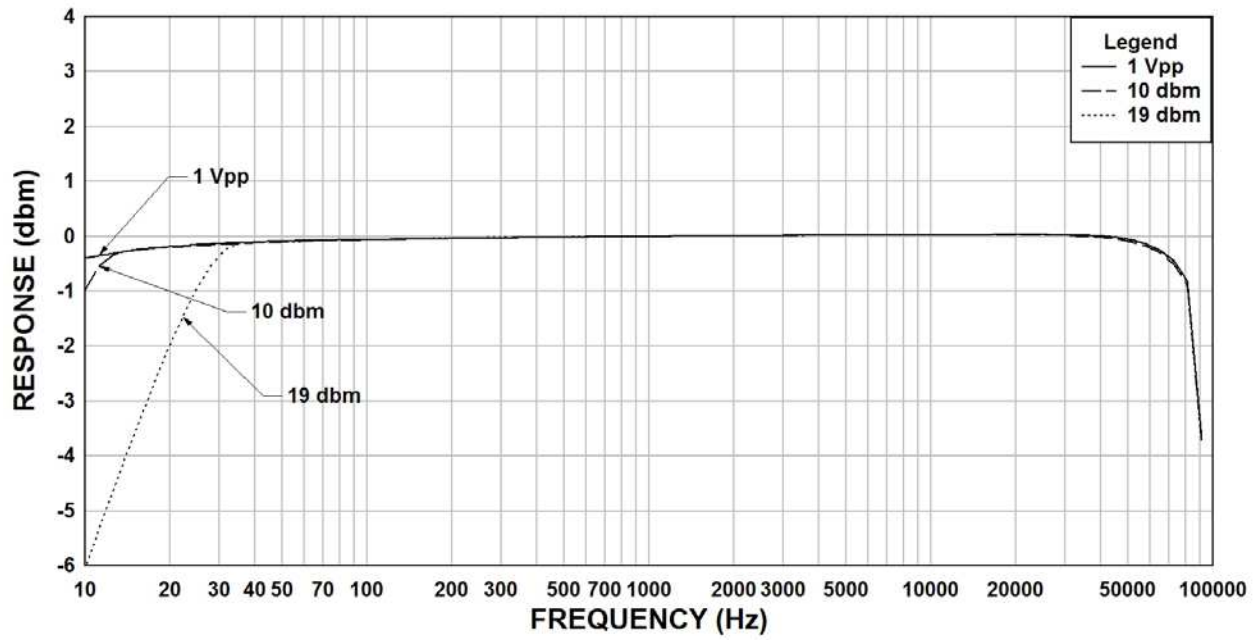
Characteristic	Typical
Input Impedance	600CT $\Omega$
Output Impedance	150 $\Omega$
Output Power	10.0 dbm
DCR	
Primary	72.4 $\Omega$
RED – BRN	36.2 $\Omega$
BRN – YEL	36.2 $\Omega$
Secondary	18.2 $\Omega$
Inductance	@ 1.0 kHz, 1.0 V OC
Primary	3.62 H
Secondary	0.88 H
Impedance	@ 1.0 kHz, 1.0 V OC
Primary	61.5 k $\Omega$
Secondary	15.6 k $\Omega$
Frequency Response	$\pm 1$ db from 20 Hz to 20KHz
Turns ratio	2:1
Insertion Loss	< 1.0 db
Return Loss	22.5 db
Longitudinal balance	-65 db
Dielectric Strength	500 Vrms



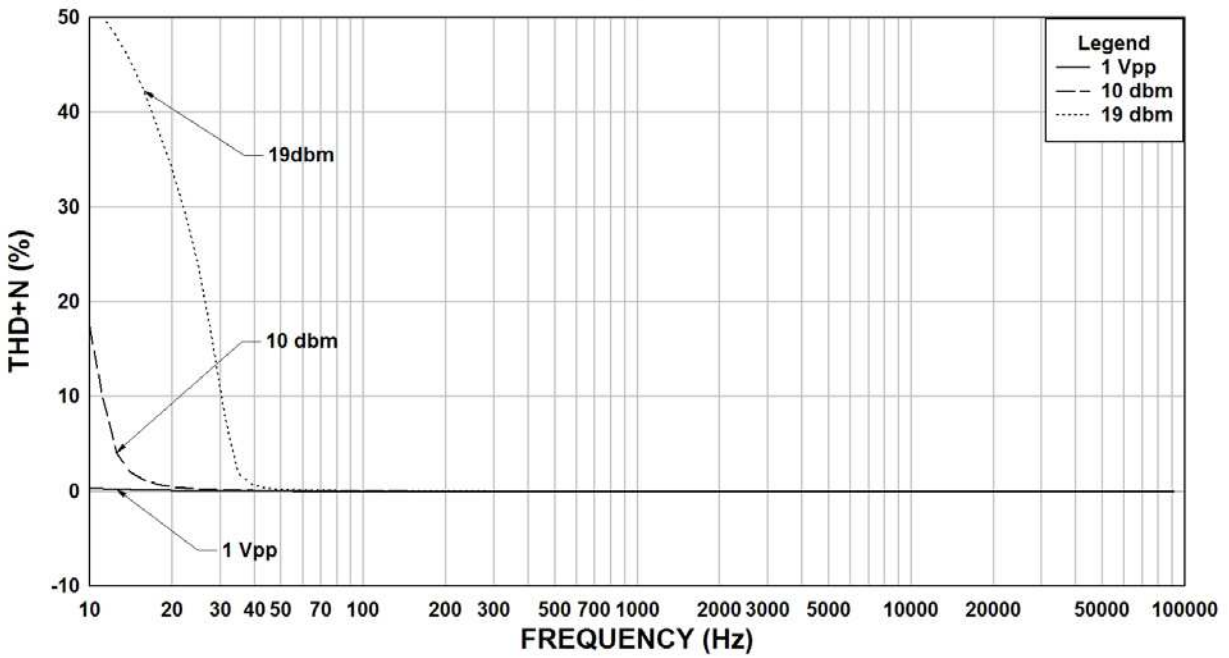
## SCHEMATIC DIAGRAM



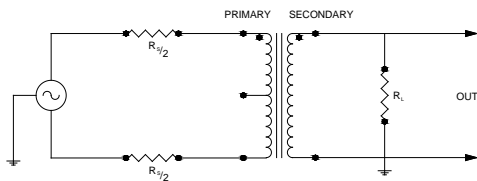
### 140REX Rs=600, RI=150 Frequency Response



### 140REX Rs=600, RI=150 THD+N



#### TYPICAL TEST CIRCUIT



Measurement instruments  
 Hp4192a impedance analyzer  
 Hp3456a DVM  
 Keithley 2002 DVM  
 D scope series iii audio analyzer

This drawing and the information in it is the property of Hammond Manufacturing. It may not be reproduced, transmitted or used in any manner whatsoever without the written permission of Hammond Manufacturing. Data subject to change without notice.