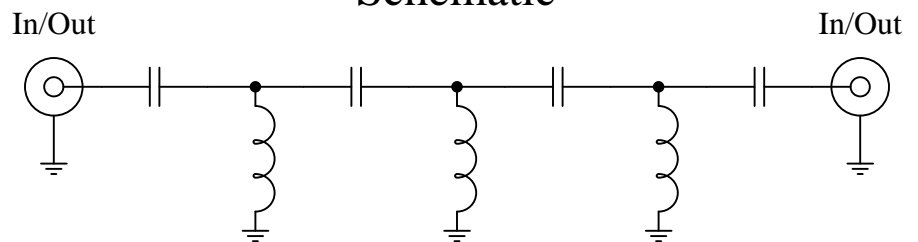


**New
High Pass Filters**



Schematic



Features:

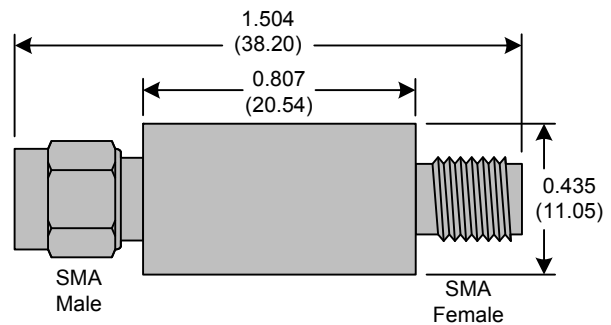
- 7th Order Butterworth Response
- 50Ω SMA Connectors

Applications:

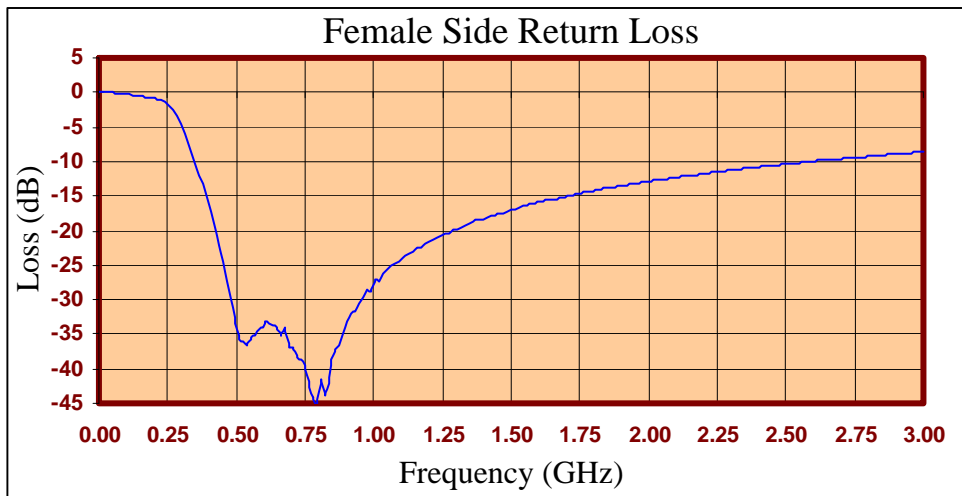
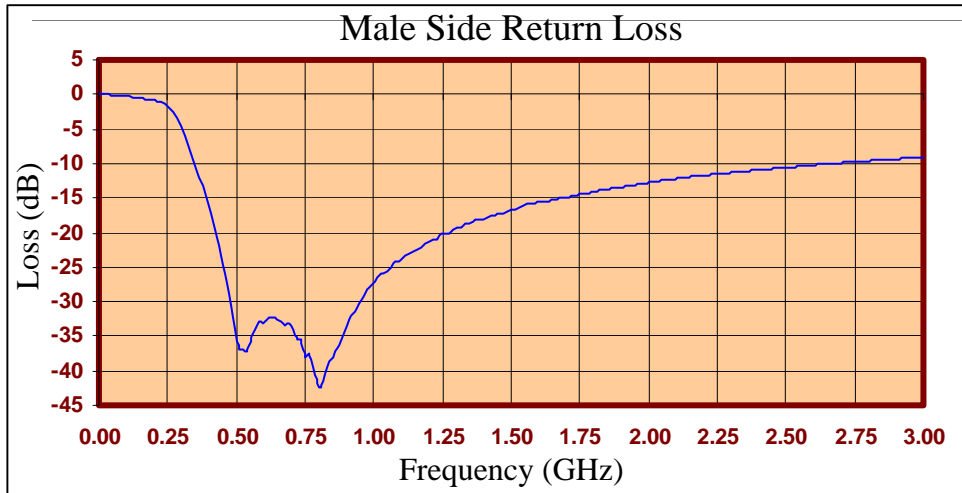
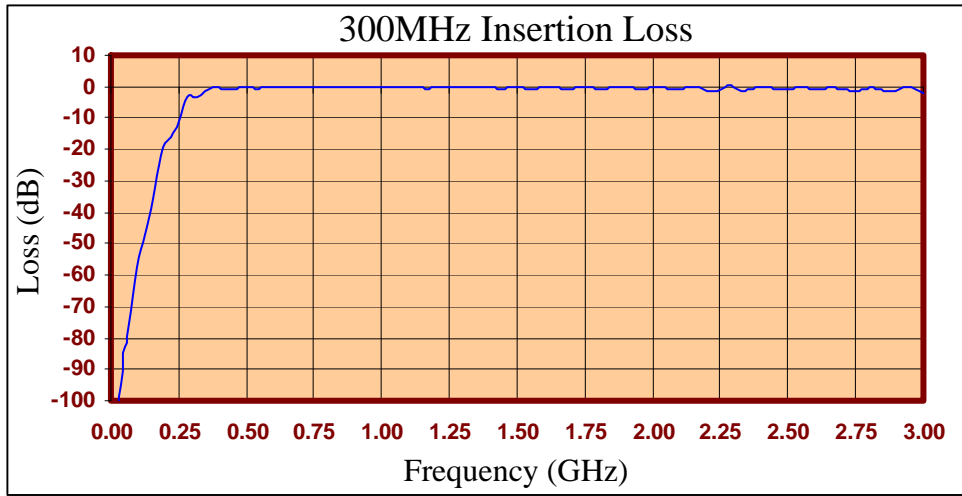
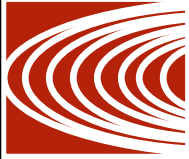
- Test Equipment
- Lab Use

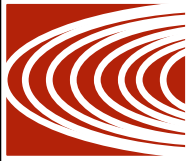
Maximum Ratings:

- +36dBm (4 Watts)
- Operating Temperature: -40°C to 85°C
- Storage Temperature: -55°C to 100°C



Crystek's new line of High Pass Filters are designed in a rugged SMA housing. This filter line has excellent out-of-band rejection. Designed for Test Equipment and General Lab Use.





FREQ (MHz)	INSERTION LOSS (dB)	Male Return Loss (dB)	Female Return Loss (dB)
0.3	-97.73	0.00	0.00
15.3	-101.36	-0.01	-0.01
30.3	-89.31	-0.04	-0.03
45.3	-88.03	-0.07	-0.06
60.3	-80.58	-0.12	-0.15
75.3	-71.75	-0.16	-0.17
90.3	-61.83	-0.22	-0.23
105	-54.47	-0.30	-0.29
120	-49.99	-0.37	-0.40
135	-45.17	-0.51	-0.49
150	-39.38	-0.59	-0.61
165	-32.56	-0.68	-0.69
180	-25.14	-0.79	-0.76
195	-19.87	-0.90	-0.85
210	-18.07	-1.05	-1.00
225	-16.30	-1.24	-1.13
240	-13.35	-1.49	-1.36
255	-9.24	-1.98	-1.81
270	-4.98	-2.70	-2.44
285	-3.34	-3.64	-3.41
300	-3.63	-4.92	-4.61
330	-2.84	-8.02	-7.69
405	-0.74	-17.47	-17.38
450	-0.62	-24.65	-24.42
510	-0.29	-36.80	-35.83
585	-0.25	-32.97	-34.40
705	-0.33	-34.07	-36.88
810	-0.41	-42.53	-41.52
900	-0.28	-33.40	-33.10
1005	-0.28	-27.04	-26.94
1245	-0.15	-20.26	-20.59
1500	-0.05	-16.67	-16.97
1755	0.00	-14.44	-14.63
1995	-0.31	-12.82	-12.95
2250	-0.71	-11.49	-11.51
2505	-0.92	-10.59	-10.35
2745	-1.48	-9.78	-9.44
3000	-1.98	-9.09	-8.64

Product Control:

Crystek Part Number:	CHPFL-0300	Release Date:	04-Nov-10
Revision Level:	A	Responsible:	K. Piotrowicz

