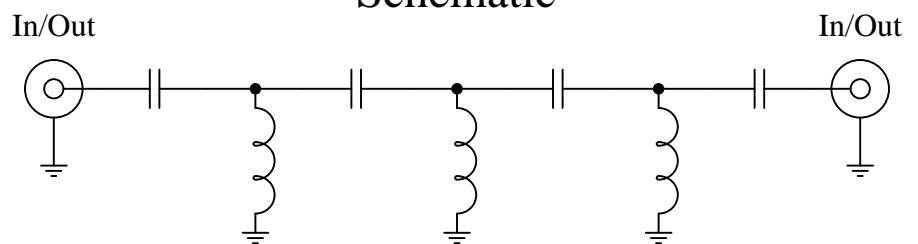


**New  
High Pass Filters**



### Schematic



### Features:

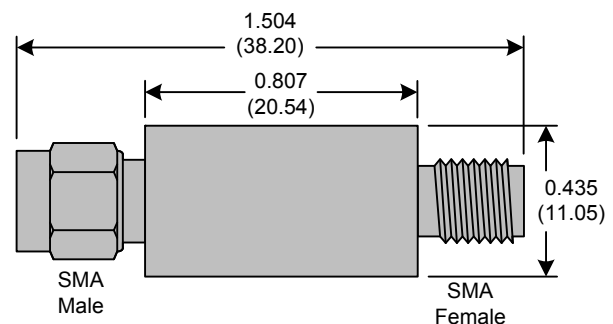
- 7<sup>th</sup> Order Butterworth Response
- 50Ω SMA Connectors

### Applications:

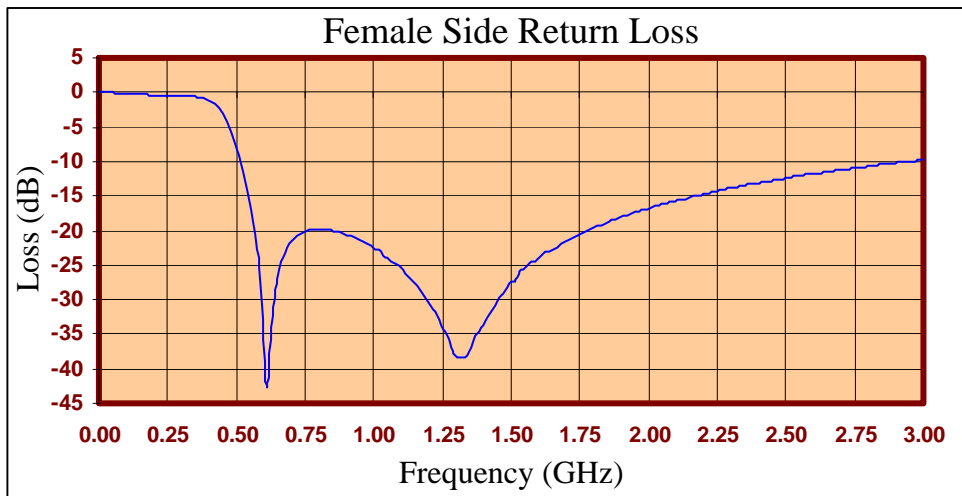
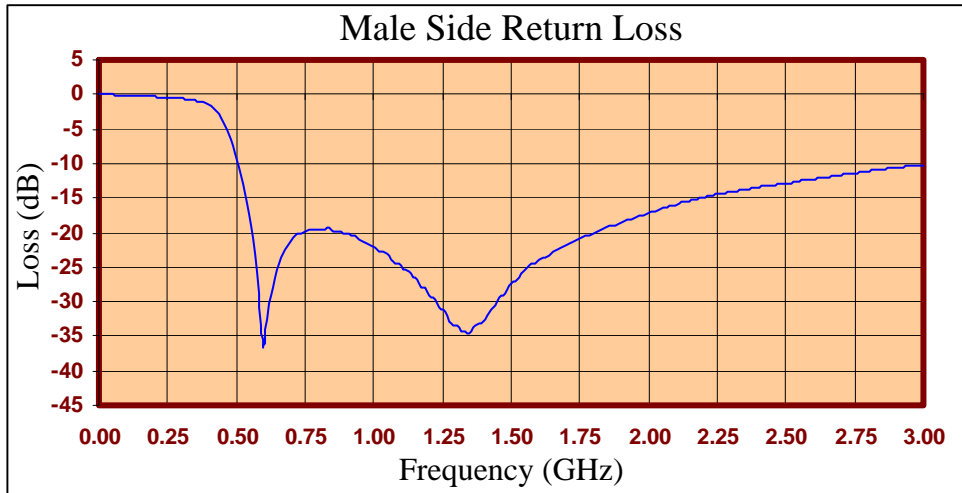
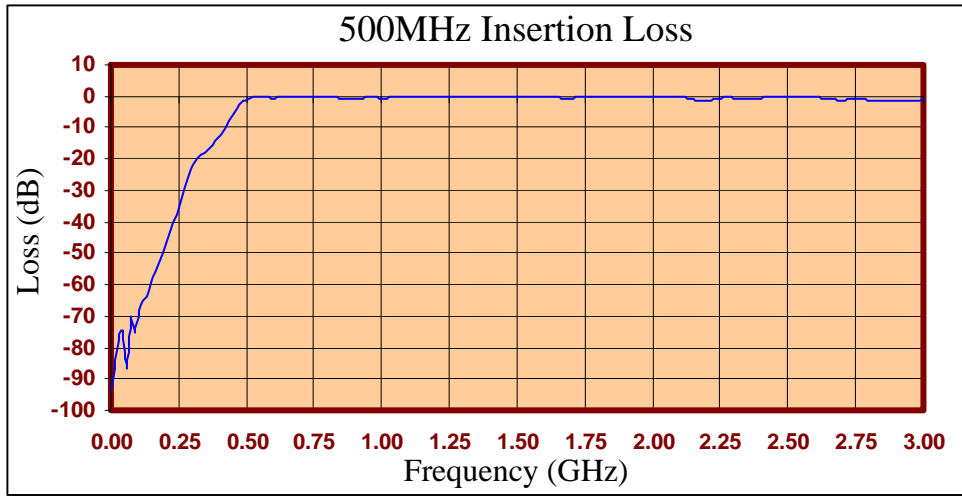
- Test Equipment
- Lab Use

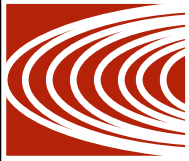
### Maximum Ratings:

- +36dBm (4 Watts)
- Operating Temperature: -40°C to 85°C
- Storage Temperature: -55°C to 100°C



Crystek's new line of High Pass Filters are designed in a rugged SMA housing. This filter line has excellent out-of-band rejection. Designed for Test Equipment and General Lab Use.





FREQ (MHz)	INSERTION LOSS (dB)	Male Return Loss (dB)	Female Return Loss (dB)
0.3	-112.15	0.00	0.00
15.3	-96.62	-0.01	-0.01
30.3	-95.24	-0.02	-0.01
45.3	-97.99	-0.02	-0.02
60.3	-85.58	-0.06	-0.08
75.3	-82.62	-0.06	-0.09
90.3	-75.25	-0.08	-0.08
105	-69.15	-0.09	-0.11
120	-66.00	-0.13	-0.16
135	-64.64	-0.20	-0.20
150	-62.93	-0.20	-0.26
165	-59.84	-0.31	-0.33
180	-55.63	-0.31	-0.35
195	-50.32	-0.33	-0.36
210	-44.54	-0.35	-0.36
225	-40.93	-0.38	-0.37
240	-39.67	-0.42	-0.40
255	-38.15	-0.47	-0.44
270	-35.55	-0.52	-0.47
285	-31.85	-0.58	-0.51
300	-27.12	-0.62	-0.54
330	-19.31	-0.73	-0.60
405	-9.58	-1.72	-1.34
450	-5.44	-3.88	-3.18
510	-0.81	-10.62	-9.23
585	-0.73	-28.93	-25.35
705	-0.29	-20.71	-21.33
810	-0.19	-19.67	-19.92
900	-0.55	-20.25	-20.69
1005	-0.38	-22.15	-22.87
1245	-0.28	-31.09	-33.85
1500	-0.13	-27.51	-27.36
1755	0.00	-20.75	-20.45
1995	-0.31	-17.24	-16.86
2250	-0.83	-14.51	-14.28
2505	-0.80	-12.90	-12.38
2745	-1.14	-11.43	-10.97
3000	-1.51	-10.21	-9.76

**Product Control:**

Crystek Part Number:	CHPFL-0500	Release Date:	22-Mar-11
Revision Level:	B	Responsible:	K. Piotrowicz

