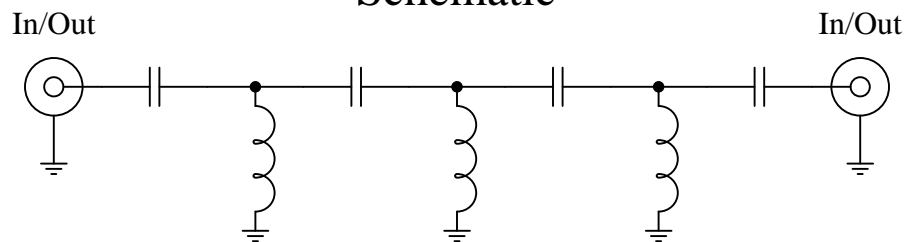


**New
High Pass Filters**



Schematic



Features:

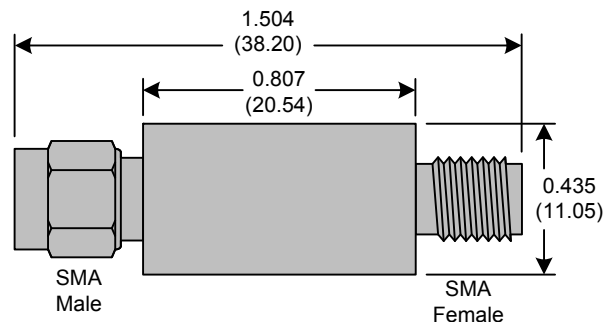
- 7th Order Butterworth Response
- 50Ω SMA Connectors

Applications:

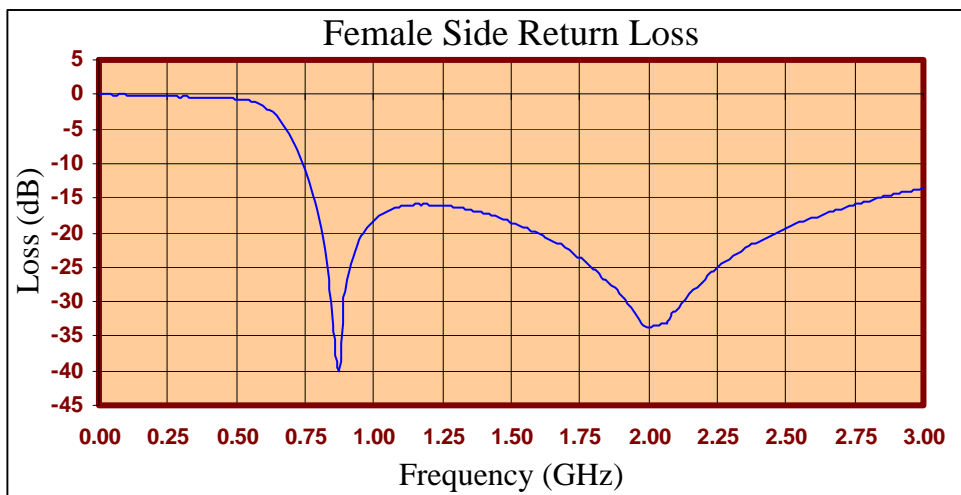
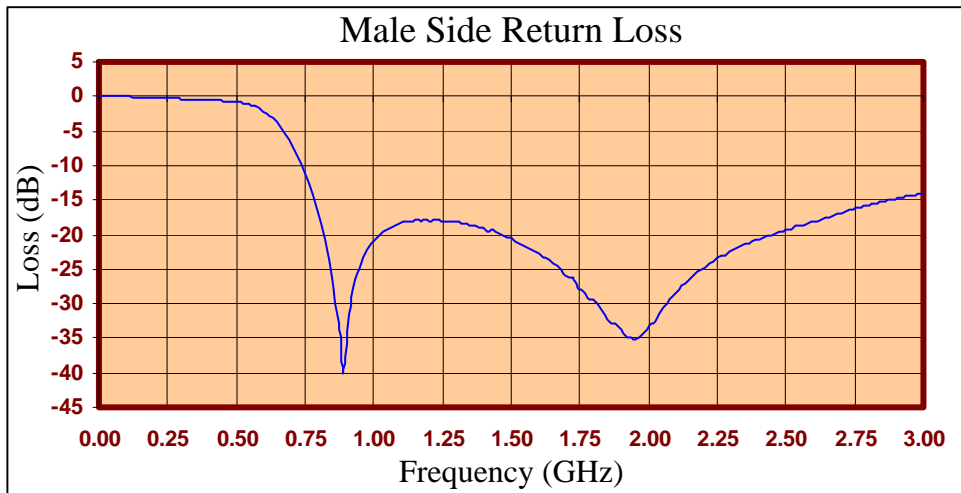
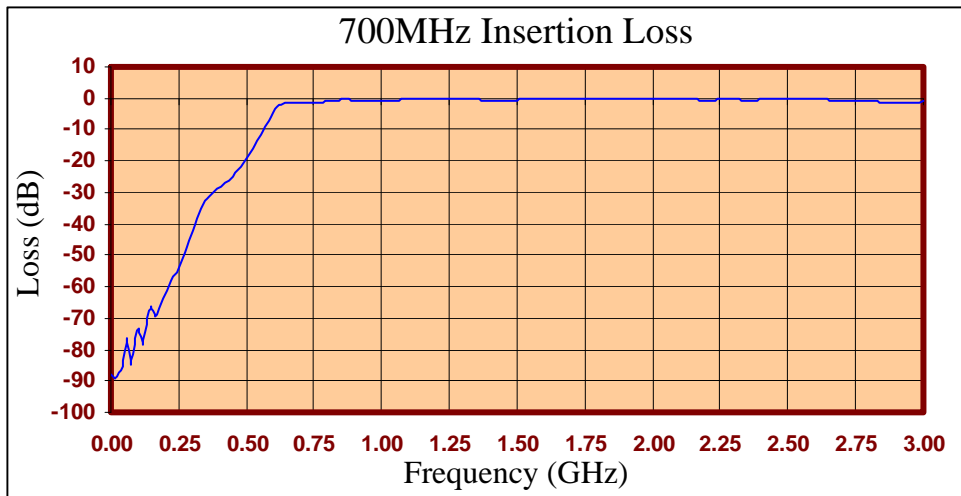
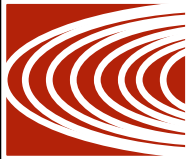
- Test Equipment
- Lab Use

Maximum Ratings:

- +36dBm (4 Watts)
- Operating Temperature: -40°C to 85°C
- Storage Temperature: -55°C to 100°C



Crystek's new line of High Pass Filters are designed in a rugged SMA housing. This filter line has excellent out-of-band rejection. Designed for Test Equipment and General Lab Use.





FREQ (MHz)	INSERTION LOSS (dB)	Male Return Loss (dB)	Female Return Loss (dB)
0.3	-97.86	0.00	0.00
15.3	-94.86	-0.01	0.00
30.3	-97.85	-0.02	-0.01
45.3	-98.42	-0.01	-0.01
60.3	-109.08	-0.04	-0.06
75.3	-90.12	-0.04	-0.05
90.3	-82.42	-0.02	-0.05
105	-76.80	-0.04	-0.07
120	-71.84	-0.08	-0.11
135	-70.98	-0.10	-0.13
150	-70.14	-0.13	-0.18
165	-69.15	-0.17	-0.21
180	-66.11	-0.18	-0.25
195	-62.28	-0.19	-0.23
210	-58.25	-0.18	-0.22
225	-53.89	-0.18	-0.23
240	-51.56	-0.22	-0.29
255	-51.29	-0.24	-0.28
270	-50.57	-0.24	-0.33
285	-48.70	-0.29	-0.33
300	-45.78	-0.36	-0.35
330	-37.26	-0.40	-0.39
405	-29.33	-0.56	-0.48
450	-18.94	-0.70	-0.53
510	-16.53	-0.92	-0.71
585	-7.57	-1.71	-1.30
705	-2.42	-7.31	-6.88
810	-0.74	-18.28	-19.36
900	-0.59	-33.99	-26.91
1005	-0.63	-20.65	-18.06
1245	-0.57	-18.02	-16.09
1500	-0.46	-20.53	-18.56
1755	-0.21	-27.83	-23.73
1995	-0.27	-33.87	-33.63
2250	-0.69	-23.40	-24.99
2505	-0.50	-19.31	-19.25
2745	-0.62	-16.38	-16.00
3000	-0.80	-14.07	-13.53

Product Control:

Crystek Part Number:	CHPFL-0700	Release Date:	22-Mar-11
Revision Level:	B	Responsible:	K. Piotrowicz

