

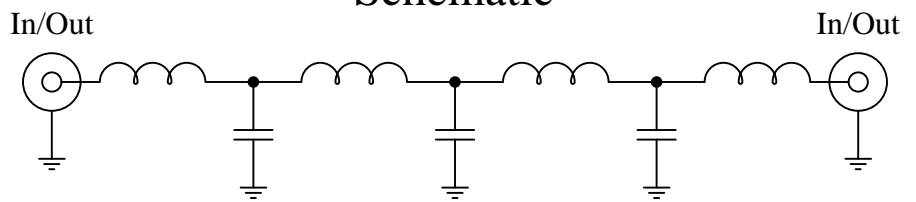
**New**  
**Low Pass Filters**

Part Number: CLPFL-0100

Low Pass Range  
DC to 100MHz



### Schematic



### Features:

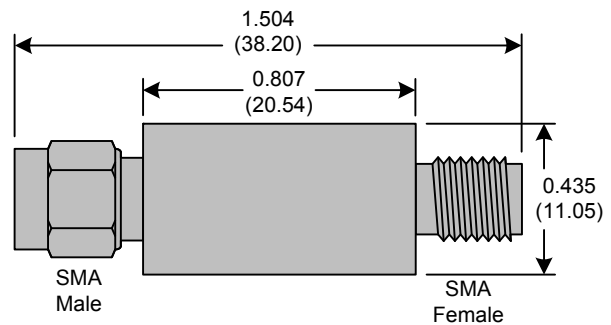
- 7<sup>th</sup> Order Butterworth Response
- 50Ω SMA Connectors

### Applications:

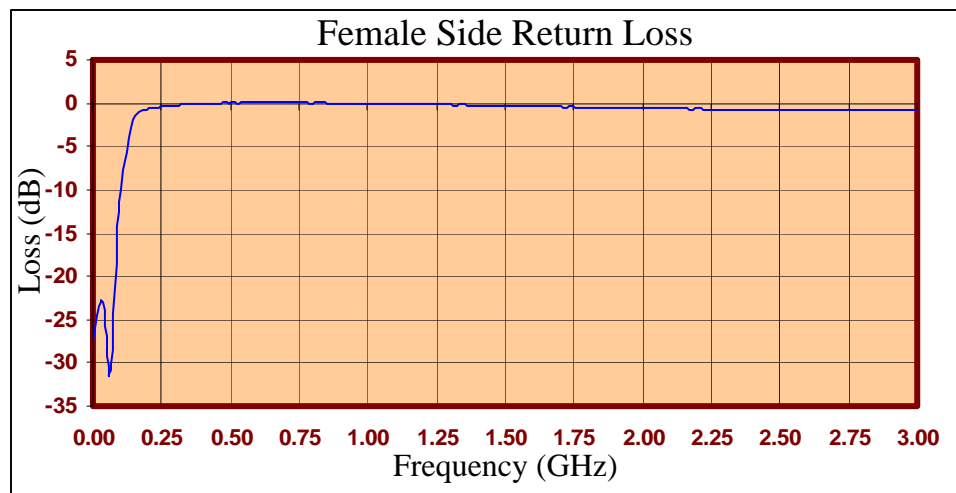
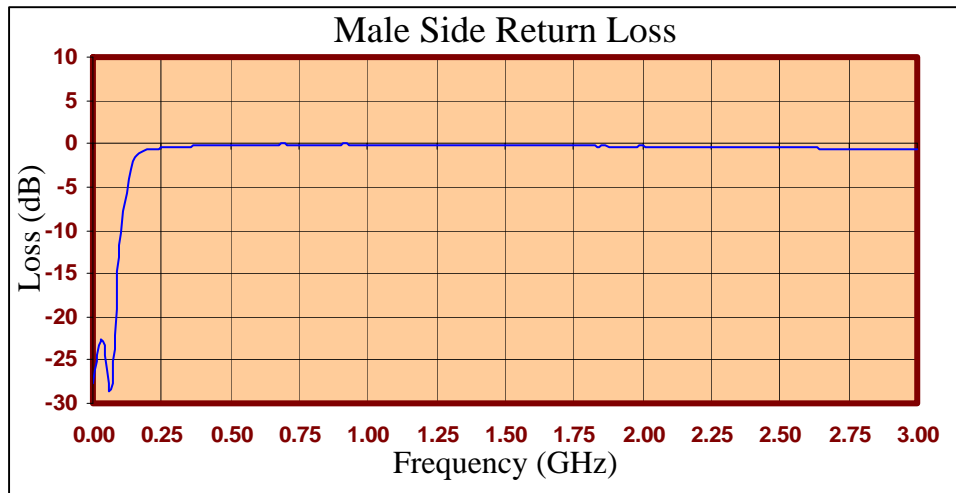
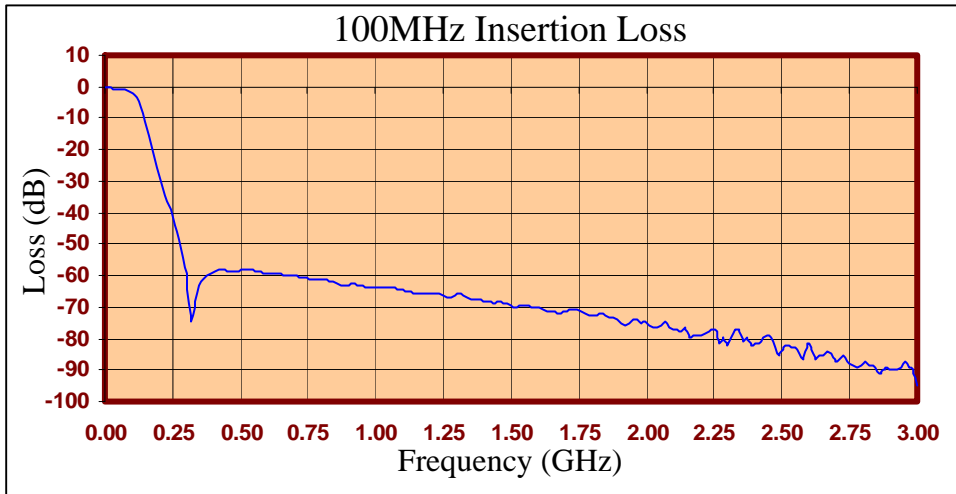
- Test Equipment
- Lab Use

### Maximum Ratings:

- +36dBm (4 Watts)
- Operating Temperature: -40°C to 85°C
- Storage Temperature: -55°C to 100°C



Crystek's new line of Low Pass Filters are designed in a rugged SMA housing. This filter line has excellent out-of-band rejection. Designed for Test Equipment and General Lab Use.





FREQ (MHz)	INSERTION LOSS (dB)	Male Return Loss (dB)	Female Return Loss (dB)
0.3	-0.36	-27.49	-27.60
15.3	-0.38	-24.09	-24.61
30.3	-0.55	-22.12	-22.83
45.3	-0.63	-23.10	-23.90
60.3	-0.70	-31.08	-31.60
75.3	-0.87	-25.00	-26.74
90.3	-1.15	-15.01	-16.14
105	-1.79	-9.19	-10.03
120	-3.35	-5.09	-5.63
135	-6.37	-2.69	-2.93
150	-10.66	-1.61	-1.55
165	-15.42	-1.05	-1.06
180	-20.56	-0.87	-0.82
195	-25.69	-0.75	-0.70
210	-30.43	-0.70	-0.60
225	-35.08	-0.65	-0.53
240	-39.63	-0.62	-0.46
255	-44.39	-0.52	-0.36
270	-49.42	-0.50	-0.34
285	-55.12	-0.47	-0.28
300	-62.70	-0.42	-0.22
330	-67.11	-0.37	-0.16
405	-58.41	-0.24	-0.11
450	-58.30	-0.20	-0.02
510	-57.82	-0.15	0.00
585	-58.94	-0.13	0.00
705	-60.15	-0.10	0.00
810	-61.14	-0.09	0.00
900	-62.91	-0.06	0.00
1005	-63.65	-0.09	0.00
1245	-66.39	-0.13	-0.17
1500	-69.25	-0.17	-0.32
1755	-72.00	-0.27	-0.48
1995	-74.54	-0.30	-0.57
2250	-80.37	-0.42	-0.71
2505	-82.09	-0.49	-0.78
2745	-96.91	-0.58	-0.81
3000	-94.96	-0.64	-0.81

**Product Control:**

Crystek Part Number:	CLPFL-0100	Release Date:	30-Mar-10
Revision Level:	A	Responsible:	K. Piotrowicz

