

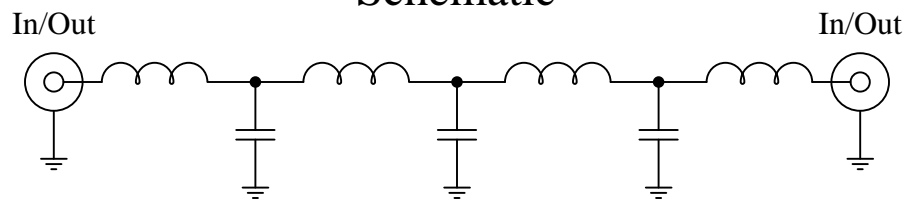
Part Number: CLPFL-0800

Low Pass Range
DC to 800MHz

New
Low Pass Filters



Schematic



Features:

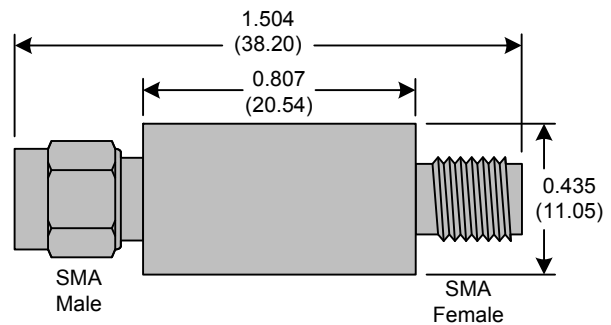
- 7th Order Butterworth Response
- 50Ω SMA Connectors

Applications:

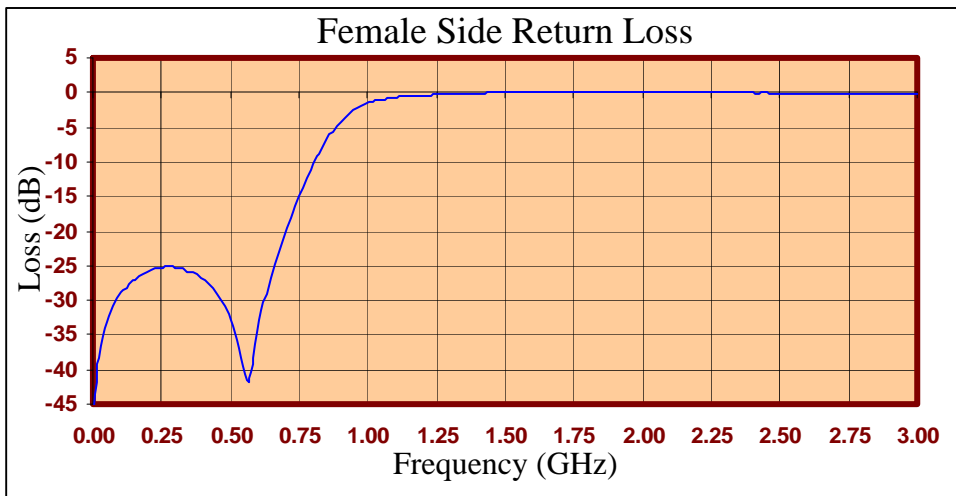
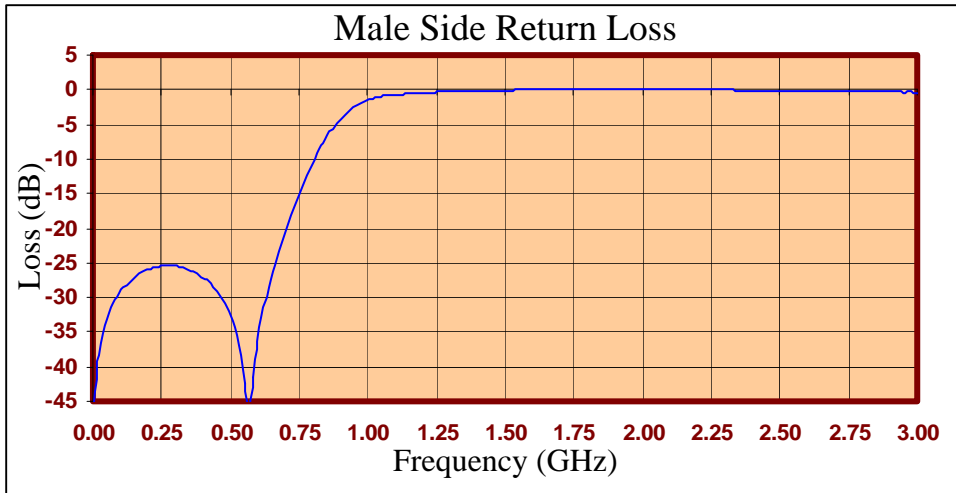
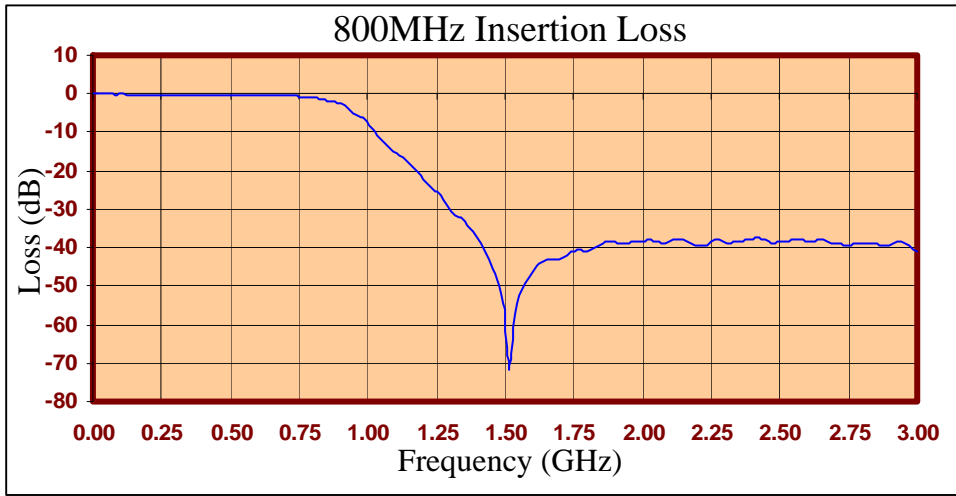
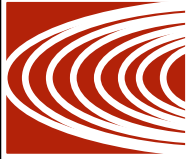
- Test Equipment
- Lab Use

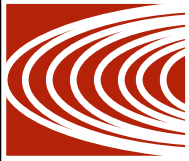
Maximum Ratings:

- +36dBm (4 Watts)
- Operating Temperature: -40°C to 85°C
- Storage Temperature: -55°C to 100°C



Crystek's new line of Low Pass Filters are designed in a rugged SMA housing. This filter line has excellent out-of-band rejection. Designed for Test Equipment and General Lab Use.





FREQ (MHz)	INSERTION LOSS (dB)	Male Return Loss (dB)	Female Return Loss (dB)
0.3	-0.04	-47.15	-47.33
15.3	-0.04	-40.49	-40.43
30.3	-0.10	-36.67	-36.69
45.3	-0.10	-34.10	-34.04
60.3	-0.11	-32.30	-32.21
75.3	-0.12	-30.92	-30.77
90.3	-0.16	-29.85	-29.82
105	-0.13	-28.92	-28.85
120	-0.14	-28.17	-28.19
135	-0.14	-27.61	-27.50
150	-0.19	-27.09	-26.97
165	-0.19	-26.63	-26.50
180	-0.22	-26.25	-26.23
195	-0.20	-26.02	-25.84
210	-0.19	-25.81	-25.57
225	-0.21	-25.57	-25.47
240	-0.23	-25.53	-25.24
255	-0.23	-25.42	-25.26
270	-0.24	-25.41	-25.16
285	-0.23	-25.42	-25.13
300	-0.24	-25.45	-25.31
330	-0.28	-25.75	-25.43
405	-0.29	-27.30	-27.10
450	-0.33	-29.11	-29.00
510	-0.34	-33.57	-33.68
585	-0.41	-41.59	-38.30
705	-0.55	-19.79	-19.56
810	-0.97	-9.90	-9.87
900	-2.68	-4.23	-4.25
1005	-7.93	-1.45	-1.43
1245	-24.93	-0.36	-0.33
1500	-52.14	-0.08	-0.04
1755	-41.79	0.00	0.00
1995	-39.00	0.00	0.00
2250	-39.17	-0.01	0.00
2505	-39.04	-0.12	-0.09
2745	-39.78	-0.24	-0.17
3000	-41.10	-0.36	-0.25

Product Control:

Crystek Part Number:	CLPFL-0800	Release Date:	09-Jun-10
Revision Level:	A	Responsible:	K. Piotrowicz

