

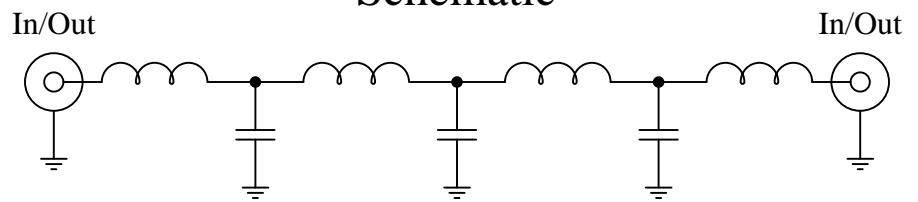
Part Number: CLPFL-0900

Low Pass Range  
DC to 900MHz

**New**  
**Low Pass Filters**



### Schematic



### Features:

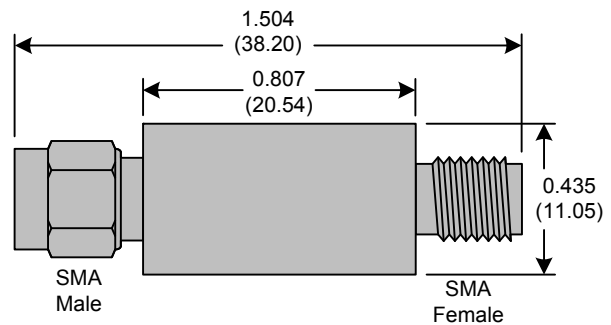
- 7<sup>th</sup> Order Butterworth Response
- 50Ω SMA Connectors

### Applications:

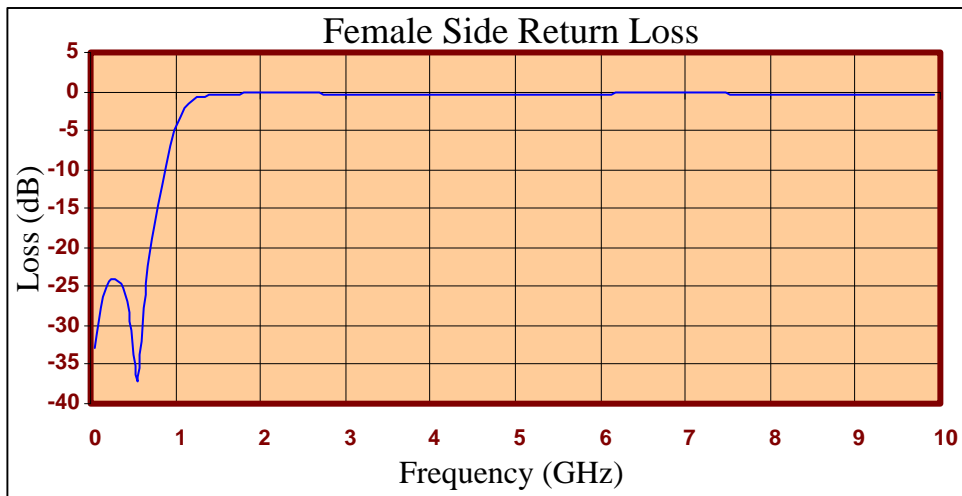
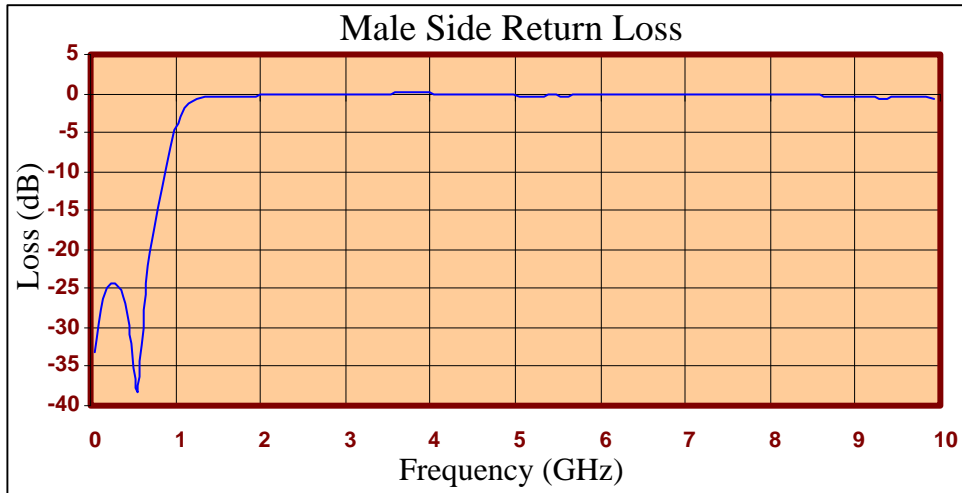
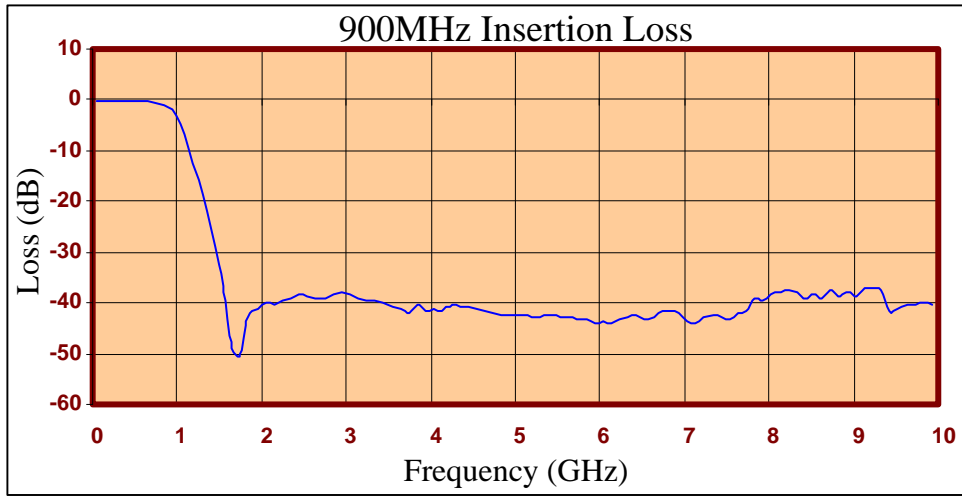
- Test Equipment
- Lab Use

### Maximum Ratings:

- +36dBm (4 Watts)
- Operating Temperature: -40°C to 85°C
- Storage Temperature: -55°C to 100°C



Crystek's new line of Low Pass Filters are designed in a rugged SMA housing. This filter line has excellent out-of-band rejection. Designed for Test Equipment and General Lab Use.





FREQ (MHz)	INSERTION LOSS (dB)	Male Return Loss (dB)	Female Return Loss (dB)
50.000	-0.06	-33.28	-33.02
249.500	-0.18	-24.43	-24.07
449.000	-0.24	-29.64	-28.33
648.500	-0.39	-24.27	-24.50
848.000	-0.87	-11.96	-11.99
947.750	-1.96	-6.90	-6.98
1047.500	-4.60	-3.07	-3.20
1247.000	-15.78	-0.72	-0.82
1446.500	-28.83	-0.47	-0.46
1546.250	-36.47	-0.41	-0.38
1646.000	-49.01	-0.37	-0.32
1845.500	-42.94	-0.30	-0.24
2045.000	-40.02	-0.25	-0.21
2244.500	-39.37	-0.21	-0.21
2444.000	-38.18	-0.19	-0.23
2643.500	-39.01	-0.15	-0.27
3042.500	-38.32	-0.10	-0.34
3345.750	-39.36	-0.04	-0.37
3641.000	-41.32	0.00	-0.37
4040.000	-41.15	-0.02	-0.31
4339.250	-40.67	-0.16	-0.29
4638.500	-41.67	-0.24	-0.32
5037.500	-42.55	-0.28	-0.40
5336.750	-42.60	-0.27	-0.42
5636.000	-42.86	-0.27	-0.39
6035.000	-43.82	-0.25	-0.31
6334.250	-42.99	-0.23	-0.24
6633.500	-42.85	-0.22	-0.20
7032.500	-43.59	-0.20	-0.20
7331.750	-42.33	-0.19	-0.23
7631.000	-42.08	-0.17	-0.28
8030.000	-38.40	-0.19	-0.36
8329.250	-37.84	-0.20	-0.37
8628.500	-39.02	-0.29	-0.38
9027.500	-38.74	-0.41	-0.38
9326.750	-37.66	-0.57	-0.42
9626.000	-40.39	-0.49	-0.41
9925.250	-40.21	-0.65	-0.55

**Product Control:**

Crystek Part Number:	CLPFL-0900	Release Date:	10-Jan-11
Revision Level:	A	Responsible:	K. Piotrowicz

