

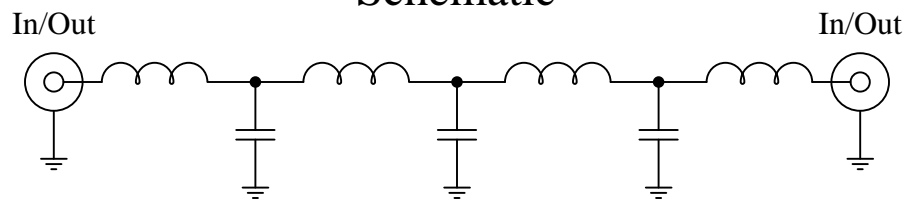
Part Number: CLPFL-1000

Low Pass Range  
DC to 1000MHz

**New**  
**Low Pass Filters**



### Schematic



### Features:

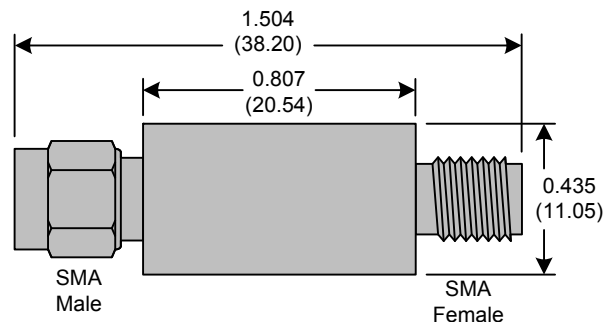
- 7<sup>th</sup> Order Butterworth Response
- 50Ω SMA Connectors

### Applications:

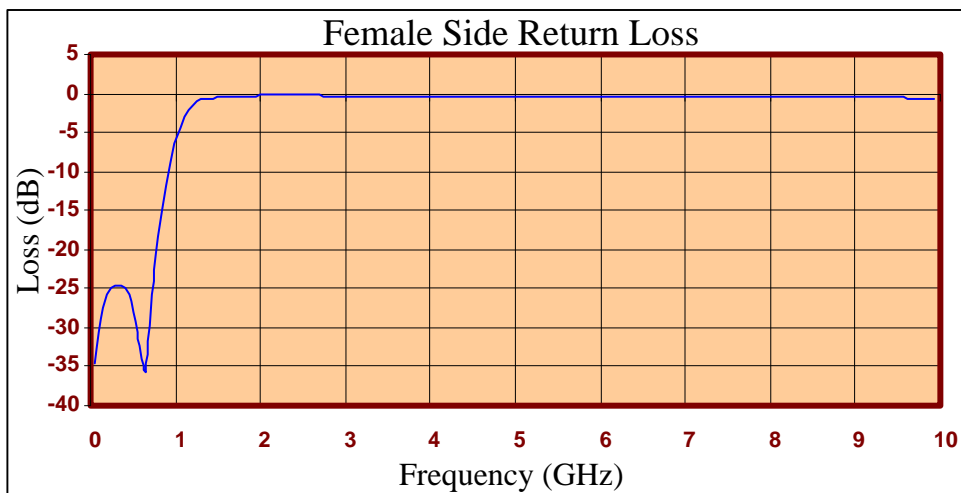
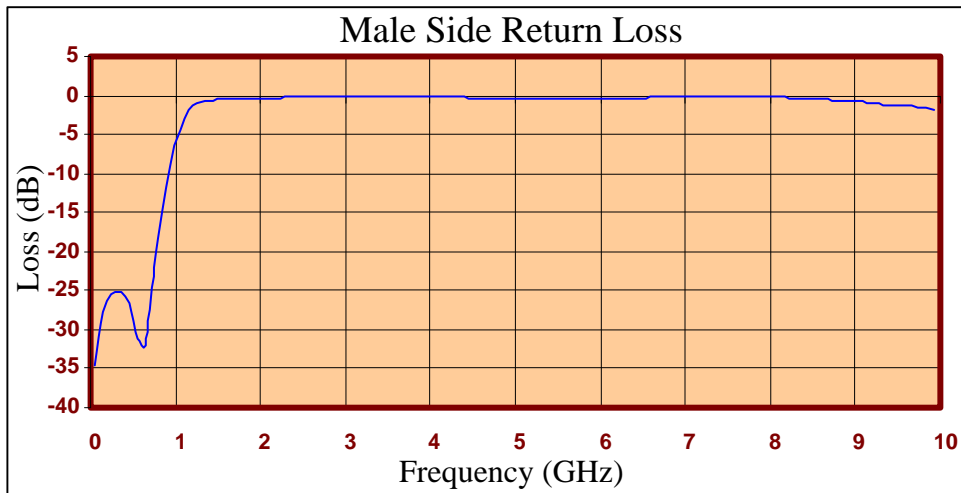
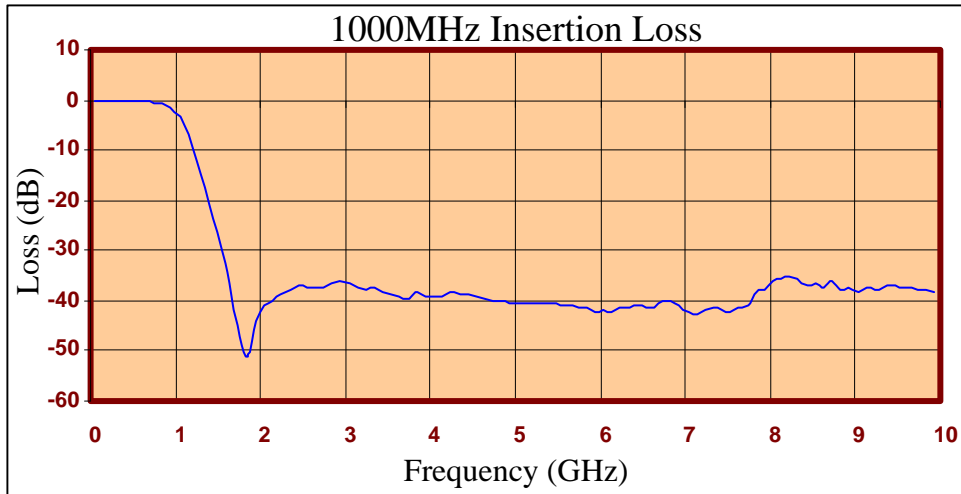
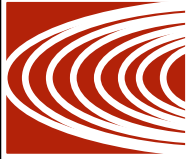
- Test Equipment
- Lab Use

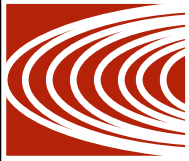
### Maximum Ratings:

- +36dBm (4 Watts)
- Operating Temperature: -40°C to 85°C
- Storage Temperature: -55°C to 100°C



Crystek's new line of Low Pass Filters are designed in a rugged SMA housing. This filter line has excellent out-of-band rejection. Designed for Test Equipment and General Lab Use.





FREQ (MHz)	INSERTION LOSS (dB)	Male Return Loss (dB)	Female Return Loss (dB)
50.000	-0.05	-34.53	-34.56
249.500	-0.17	-25.41	-25.00
449.000	-0.23	-26.73	-25.90
648.500	-0.34	-32.01	-35.42
848.000	-0.66	-14.95	-15.00
947.750	-1.38	-8.99	-9.00
1047.500	-3.15	-4.43	-4.48
1247.000	-12.22	-0.97	-1.06
1446.500	-23.68	-0.56	-0.59
1546.250	-29.31	-0.50	-0.50
1646.000	-36.37	-0.45	-0.43
1845.500	-51.18	-0.38	-0.32
2045.000	-40.93	-0.32	-0.25
2244.500	-38.57	-0.27	-0.23
2444.000	-36.86	-0.24	-0.23
2643.500	-37.37	-0.21	-0.27
3042.500	-36.59	-0.16	-0.35
3345.750	-37.44	-0.11	-0.41
3641.000	-39.34	-0.05	-0.44
4040.000	-38.96	-0.09	-0.38
4339.250	-38.53	-0.24	-0.36
4638.500	-39.64	-0.32	-0.38
5037.500	-40.50	-0.37	-0.47
5336.750	-40.65	-0.35	-0.50
5636.000	-40.99	-0.35	-0.49
6035.000	-42.05	-0.32	-0.42
6334.250	-41.40	-0.29	-0.35
6633.500	-41.31	-0.27	-0.30
7032.500	-42.40	-0.23	-0.30
7331.750	-41.36	-0.21	-0.32
7631.000	-41.25	-0.19	-0.39
8030.000	-36.13	-0.24	-0.47
8329.250	-35.74	-0.28	-0.45
8628.500	-37.38	-0.49	-0.43
9027.500	-38.37	-0.82	-0.41
9326.750	-37.20	-1.13	-0.47
9626.000	-37.33	-1.41	-0.60
9925.250	-38.40	-1.85	-0.83

**Product Control:**

Crystek Part Number:	CLPFL-1000	Release Date:	10-Jan-11
Revision Level:	A	Responsible:	K. Piotrowicz

