

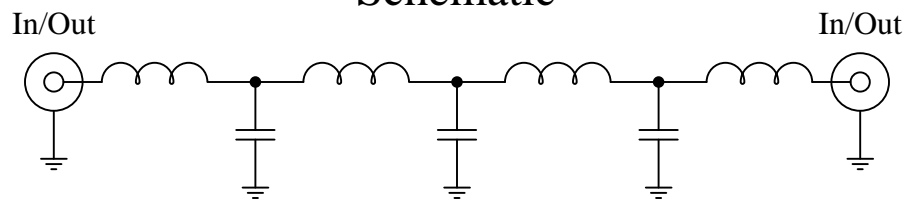
Part Number: CLPFL-1200

Low Pass Range
DC to 1200MHz

New
Low Pass Filters



Schematic



Features:

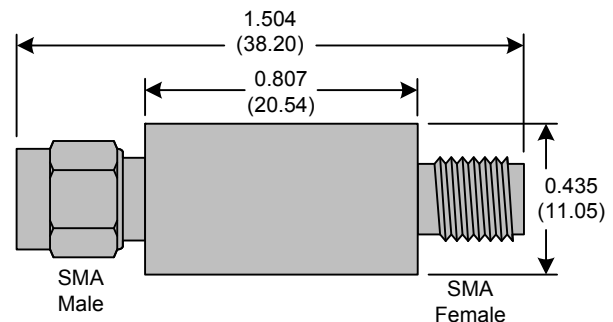
- 7th Order Butterworth Response
- 50Ω SMA Connectors

Applications:

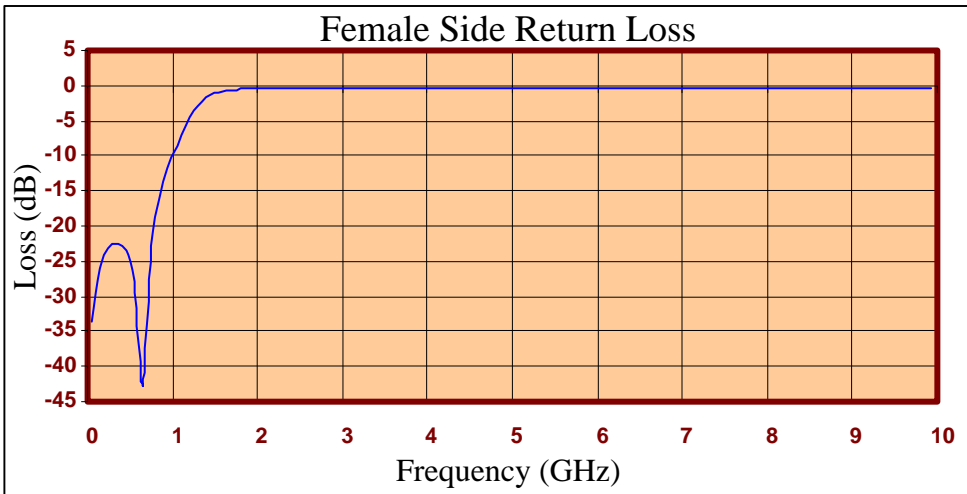
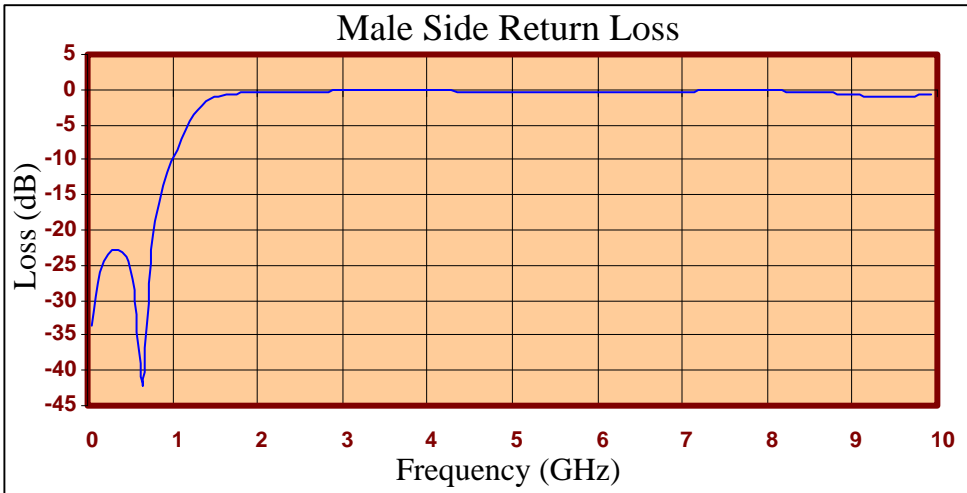
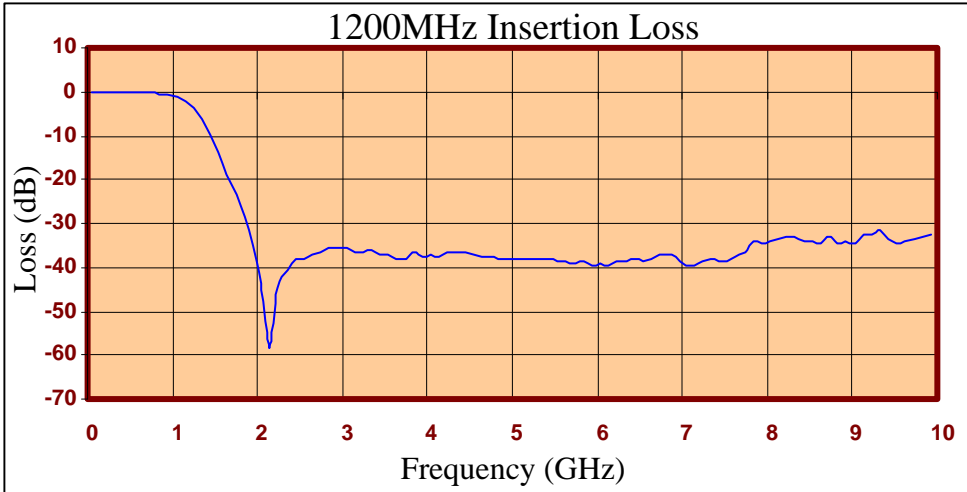
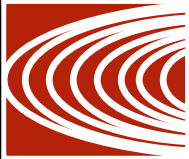
- Test Equipment
- Lab Use

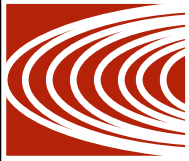
Maximum Ratings:

- +36dBm (4 Watts)
- Operating Temperature: -40°C to 85°C
- Storage Temperature: -55°C to 100°C



Crystek's new line of Low Pass Filters are designed in a rugged SMA housing. This filter line has excellent out-of-band rejection. Designed for Test Equipment and General Lab Use.





FREQ (MHz)	INSERTION LOSS (dB)	Male Return Loss (dB)	Female Return Loss (dB)
50.000	-0.07	-33.75	-33.51
249.500	-0.16	-23.39	-23.24
449.000	-0.20	-23.94	-23.53
648.500	-0.28	-42.15	-42.72
848.000	-0.51	-16.26	-16.21
947.750	-0.79	-11.89	-11.80
1047.500	-1.21	-8.54	-8.48
1247.000	-3.57	-3.64	-3.70
1446.500	-9.99	-1.27	-1.38
1546.250	-13.65	-0.87	-0.95
1646.000	-18.62	-0.68	-0.72
1845.500	-28.35	-0.52	-0.47
2045.000	-43.85	-0.43	-0.33
2244.500	-44.43	-0.35	-0.26
2444.000	-38.12	-0.30	-0.25
2643.500	-37.15	-0.25	-0.26
3042.500	-35.79	-0.20	-0.34
3345.750	-36.23	-0.15	-0.40
3641.000	-37.94	-0.08	-0.43
4040.000	-36.95	-0.10	-0.37
4339.250	-36.54	-0.24	-0.33
4638.500	-37.58	-0.32	-0.35
5037.500	-38.28	-0.36	-0.42
5336.750	-38.29	-0.36	-0.46
5636.000	-38.55	-0.36	-0.44
6035.000	-39.33	-0.33	-0.37
6334.250	-38.58	-0.31	-0.31
6633.500	-38.34	-0.28	-0.26
7032.500	-39.37	-0.23	-0.23
7331.750	-38.00	-0.22	-0.25
7631.000	-37.36	-0.19	-0.29
8030.000	-33.82	-0.20	-0.34
8329.250	-33.26	-0.24	-0.38
8628.500	-34.42	-0.44	-0.39
9027.500	-34.59	-0.79	-0.38
9326.750	-31.69	-0.96	-0.47
9626.000	-33.88	-0.88	-0.46
9925.250	-32.61	-0.84	-0.54

Product Control:

Crystek Part Number:	CLPFL-1200	Release Date:	10-Jan-11
Revision Level:	A	Responsible:	K. Piotrowicz

