

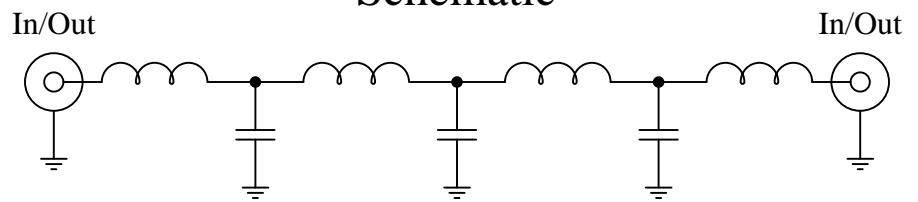
Part Number: CLPFL-1600

Low Pass Range
DC to 1600MHz

New
Low Pass Filters



Schematic



Features:

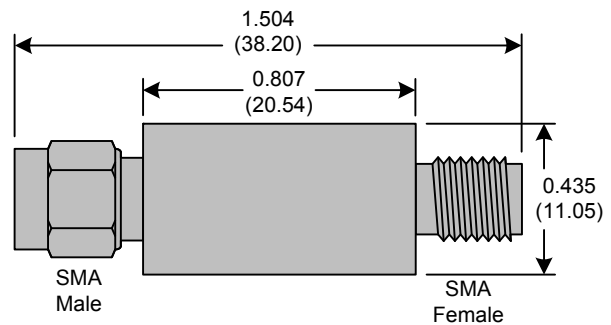
- 7th Order Butterworth Response
- 50Ω SMA Connectors

Applications:

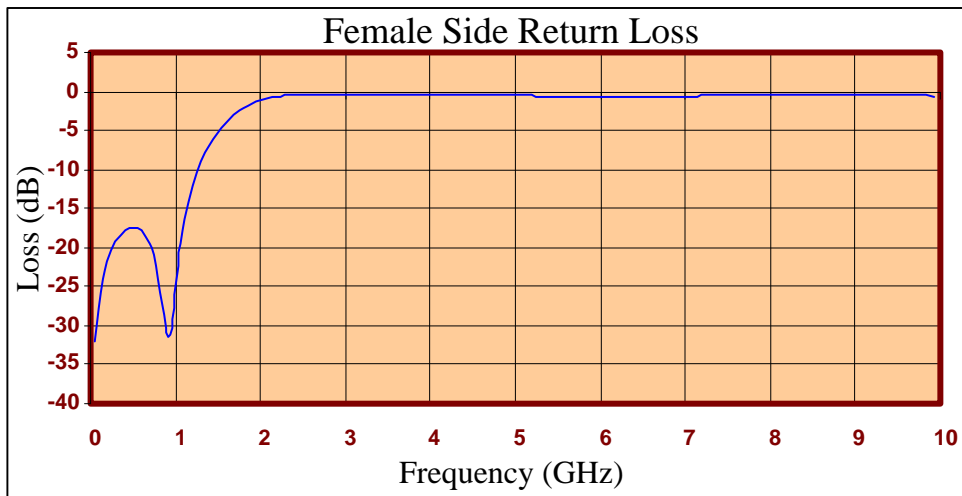
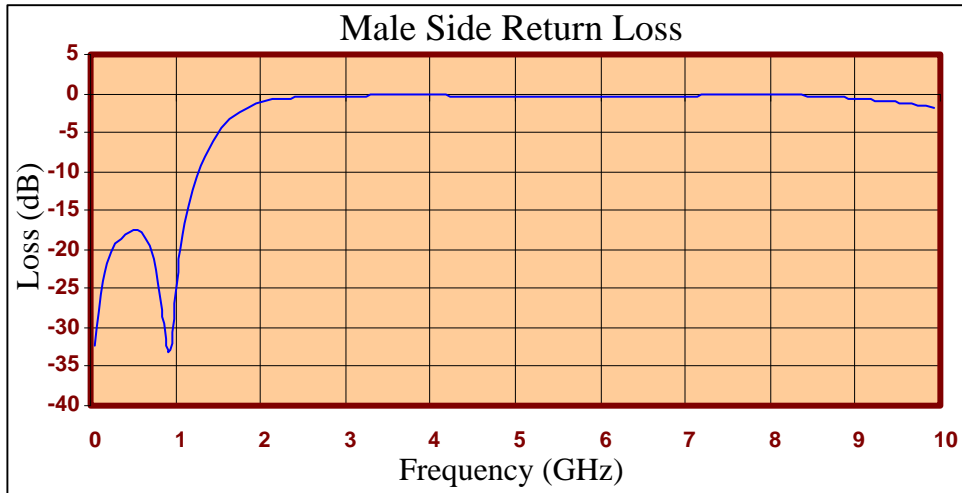
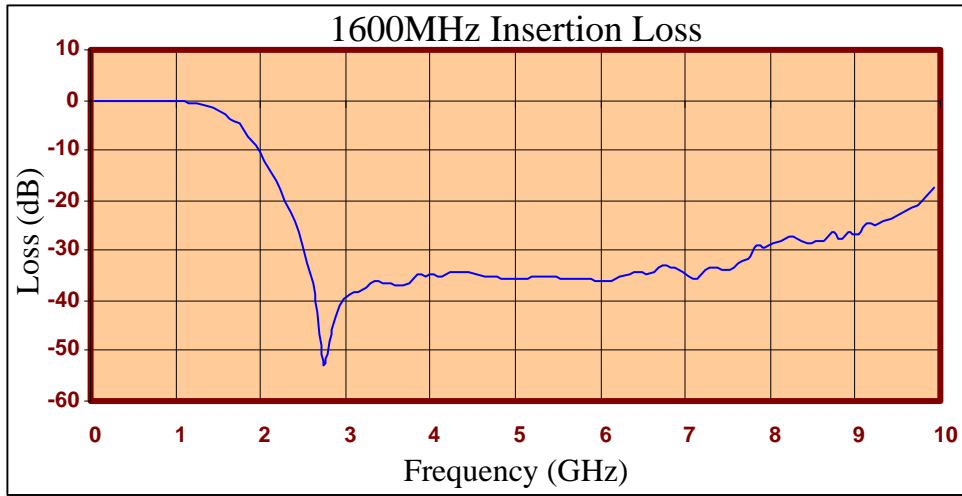
- Test Equipment
- Lab Use

Maximum Ratings:

- +36dBm (4 Watts)
- Operating Temperature: -40°C to 85°C
- Storage Temperature: -55°C to 100°C



Crystek's new line of Low Pass Filters are designed in a rugged SMA housing. This filter line has excellent out-of-band rejection. Designed for Test Equipment and General Lab Use.





| FREQ (MHz) | INSERTION LOSS (dB) | Male Return Loss (dB) | Female Return Loss (dB) |
|------------|---------------------|-----------------------|-------------------------|
| 50.000 | -0.02 | -32.19 | -32.15 |
| 249.500 | -0.15 | -20.40 | -20.37 |
| 449.000 | -0.22 | -17.66 | -17.56 |
| 648.500 | -0.23 | -18.65 | -18.52 |
| 848.000 | -0.24 | -27.72 | -27.30 |
| 947.750 | -0.28 | -32.83 | -31.08 |
| 1047.500 | -0.34 | -19.84 | -19.62 |
| 1247.000 | -0.66 | -10.61 | -10.52 |
| 1446.500 | -1.44 | -6.05 | -6.01 |
| 1546.250 | -2.52 | -4.54 | -4.54 |
| 1646.000 | -3.59 | -3.37 | -3.41 |
| 1845.500 | -7.35 | -1.80 | -1.89 |
| 2045.000 | -12.23 | -1.03 | -1.04 |
| 2244.500 | -18.08 | -0.70 | -0.63 |
| 2444.000 | -26.50 | -0.53 | -0.42 |
| 2643.500 | -38.90 | -0.42 | -0.33 |
| 3042.500 | -38.88 | -0.31 | -0.33 |
| 3345.750 | -36.18 | -0.26 | -0.40 |
| 3641.000 | -36.77 | -0.18 | -0.45 |
| 4040.000 | -34.76 | -0.19 | -0.42 |
| 4339.250 | -34.36 | -0.31 | -0.39 |
| 4638.500 | -35.08 | -0.39 | -0.42 |
| 5037.500 | -35.48 | -0.46 | -0.53 |
| 5336.750 | -35.30 | -0.47 | -0.61 |
| 5636.000 | -35.47 | -0.47 | -0.65 |
| 6035.000 | -35.91 | -0.45 | -0.68 |
| 6334.250 | -34.91 | -0.42 | -0.69 |
| 6633.500 | -34.34 | -0.37 | -0.67 |
| 7032.500 | -35.40 | -0.30 | -0.60 |
| 7331.750 | -33.58 | -0.26 | -0.50 |
| 7631.000 | -32.42 | -0.21 | -0.46 |
| 8030.000 | -28.40 | -0.19 | -0.47 |
| 8329.250 | -27.88 | -0.21 | -0.49 |
| 8628.500 | -27.89 | -0.38 | -0.49 |
| 9027.500 | -26.68 | -0.70 | -0.44 |
| 9326.750 | -24.10 | -1.01 | -0.42 |
| 9626.000 | -21.88 | -1.29 | -0.43 |
| 9925.250 | -17.44 | -1.75 | -0.65 |

Product Control:

| | | | |
|----------------------|------------|---------------|---------------|
| Crystek Part Number: | CLPFL-1600 | Release Date: | 10-Jan-11 |
| Revision Level: | A | Responsible: | K. Piotrowicz |

