



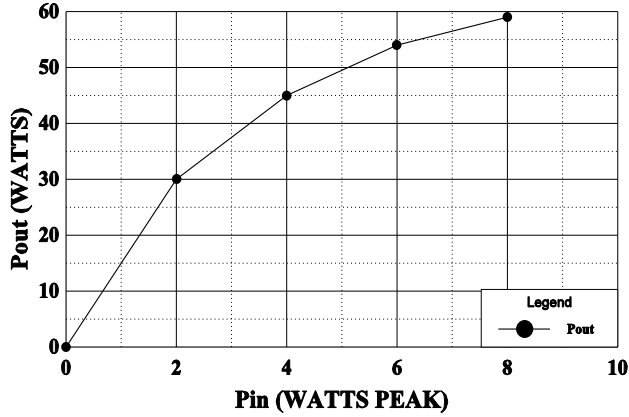


**GHz TECHNOLOGY**  
RF · MICROWAVE · SILICON POWER TRANSISTORS

0912-45

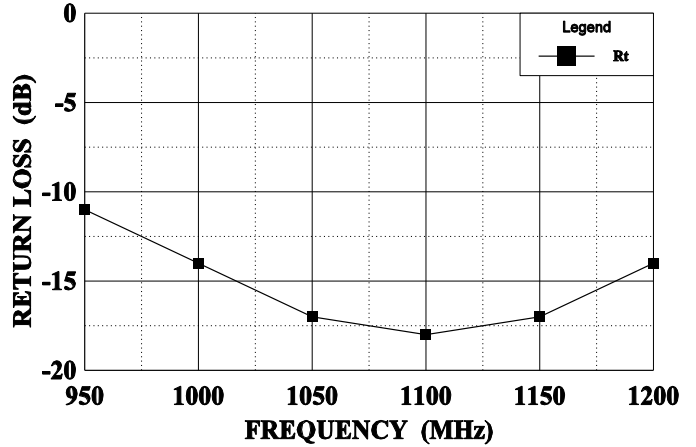
**POWER OUTPUT vs POWER INPUT**

Vcc = 50 V, F = 1090 MHz



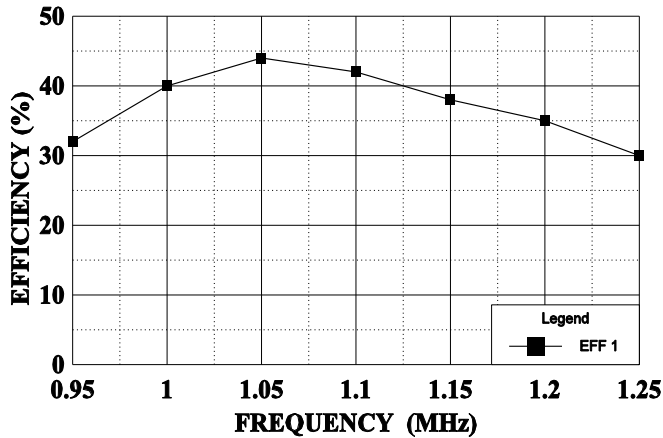
**WIDEBAND CIRCUIT INPUT RETURN LOSS**

Vcc = 50 V, Pin = 7.0 W



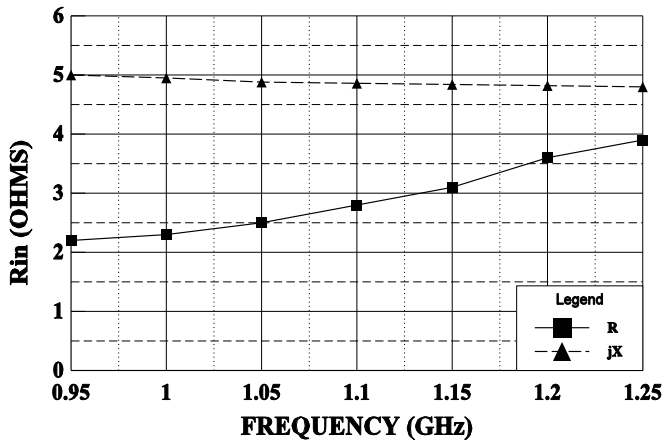
**EFFICIENCY vs FREQUENCY**

Vcc = 50 V, Pin = 7.0 W



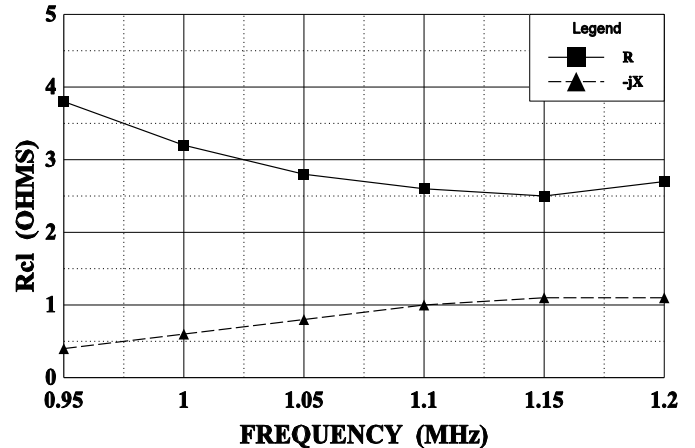
**SERIES INPUT IMPEDANCE vs FREQUENCY**

Vcc = 50 V, Pin = 7.0 W

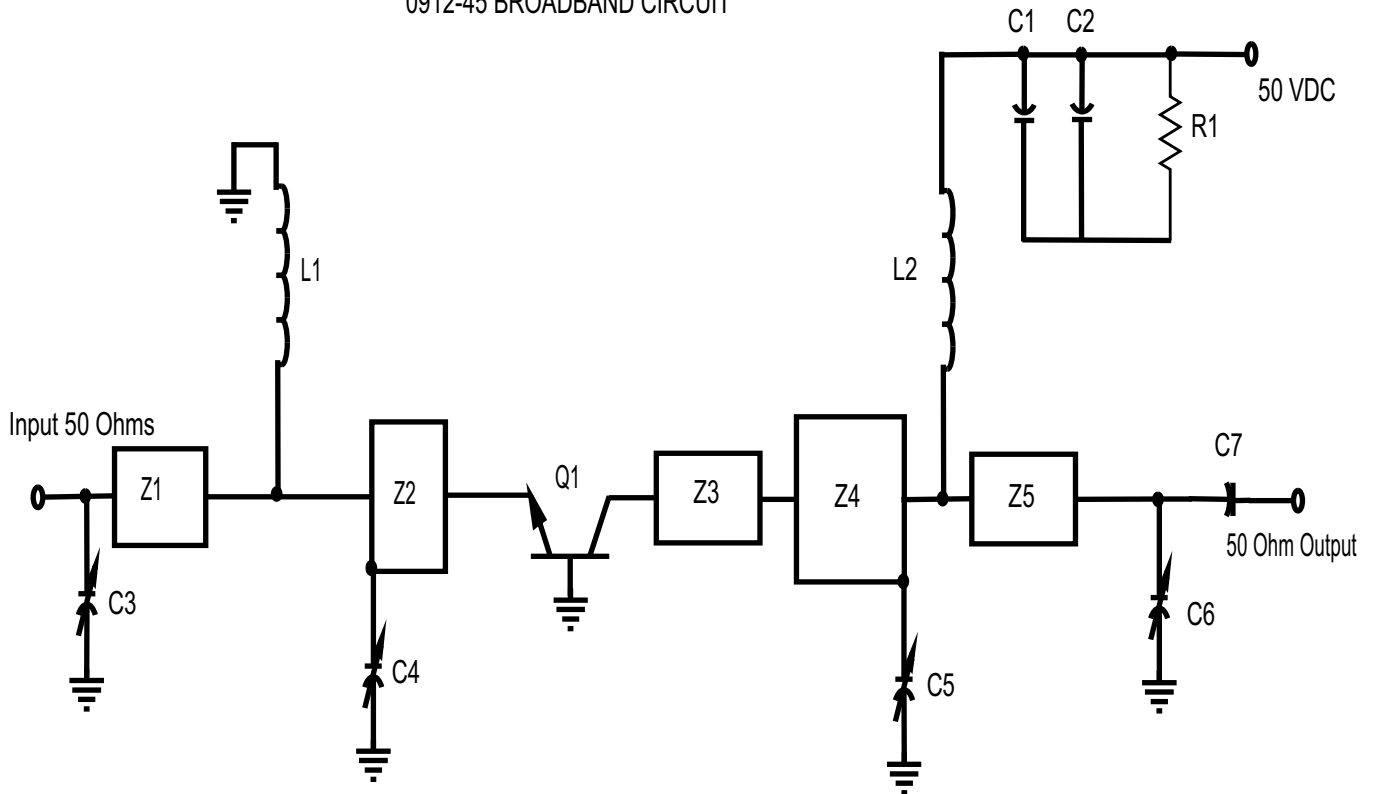


**SERIES LOAD IMPEDANCE vs FREQUENCY**

Vcc = 50 V, Pin = 7.0 W



## 0912-45 BROADBAND CIRCUIT



PC Board Material .010" Dielectric Teflon Fiberglass

Z1=50 , .08 , = .027"w X .59"L  
 Z2=2.7 .064 , =.80"w X .44"L  
 Z3=10 , .062 , =.20"w X .443"L  
 Z4=3.7 , .08 , =.55"w X .55"L  
 Z5=50 , .075 , =.027"w X .56"L  
 L1= Inductor #14 wire, 0.7" long  
 L2= Inductor #18 wire, 1.5" long

C1=Capacitor 100 pF "B" (100mil) ATC  
 C2=Capacitor 68mfd, 75V Electrolytic  
 C3, C4, C5, C6= Capacitor .35-3.5pF Piston Trimmer  
 C4=Capacitor 47pF "B" (100mil) ATC  
 R1= Resistor, 15WK 1/4W  
 Q1=GHz Transistor 0912-45

All electrical lengths taken at 1.09 GHz