

H/I-Series

Toggle Switches

General purpose workhorses with options tailored to meet most any need. Ratings to 17A 125VAC, various actuator, bushing, termination, and circuit choices allow this toggle to easily integrate into a variety of different applications. The H/I-Series has a storied history in the Food service, Generator, Industrial Control, and Office Automation markets and is appropriate for usage in low voltage DC applications as well.



Carling Technologies®

Innovative Designs. Powerful Solutions.

Innovative Designs. Powerful Solutions.

Carling Technologies, Inc.
60 Johnson Avenue • Plainville, CT 06062-1177
Phone: (860) 793-9281 • Fax: (860) 793-9231
Email: sales@carlingtech.com • www.carlingtech.com

Dielectric Strength

UL/CSA: 1000V - live to dead metal parts

Electrical Life

50,000 cycles - maintained
25,000 cycles - momentary

Mechanical Life

100,000 cycles

Operating Temperature

32°F to 185°F (0° to 85°C)

HK251 - 73

¹
Base Part Number

²
Actuator Style

1 BASE PART NUMBER: SERIES/CIRCUITRY/RATING/TERMINATION²
10A 250VAC, 15A 125VAC, 3/4 HP 125-250VAC, 1, 2 or 3 phase

Three Pole				Four Pole				
solder lug	.250 tab	screw term.	wire leads	solder lug	.250 tab	screw term.	wire leads	
HK250	HK251	HK254	HK255	Off-None-On	IK250	IK251	IK254	IK255
HK25A	HK25B	HK25E	HK25F	Off-None-(On)	IK25A	IK25B	IK25E	IK25F
HK25L	HK25M	HK25S	HK25S	On-None-(Off)	IK25L	IK25M	IK25S	IK25T
HL250	HL251	HL254	HL25E	On-None-On	IL250	IL251	IL254	IL255
HL25A	HL25B	HL25E	HL25F	On-None-(On)	IL25A	IL25B	IL25E	IL25F
HM250	HM251	HM254	HM255	On-Off-On	IM250	IM251	IM254	IM255
HM25A	HM25B	HM25E	HM25F	On-Off-(On)	IM25A	IM25B	IM25E	IM25F
HM25L	HM25M	HM25S	HM25T	(On-Off-(On))	IM25L	IM25M	IM25S	IM25T

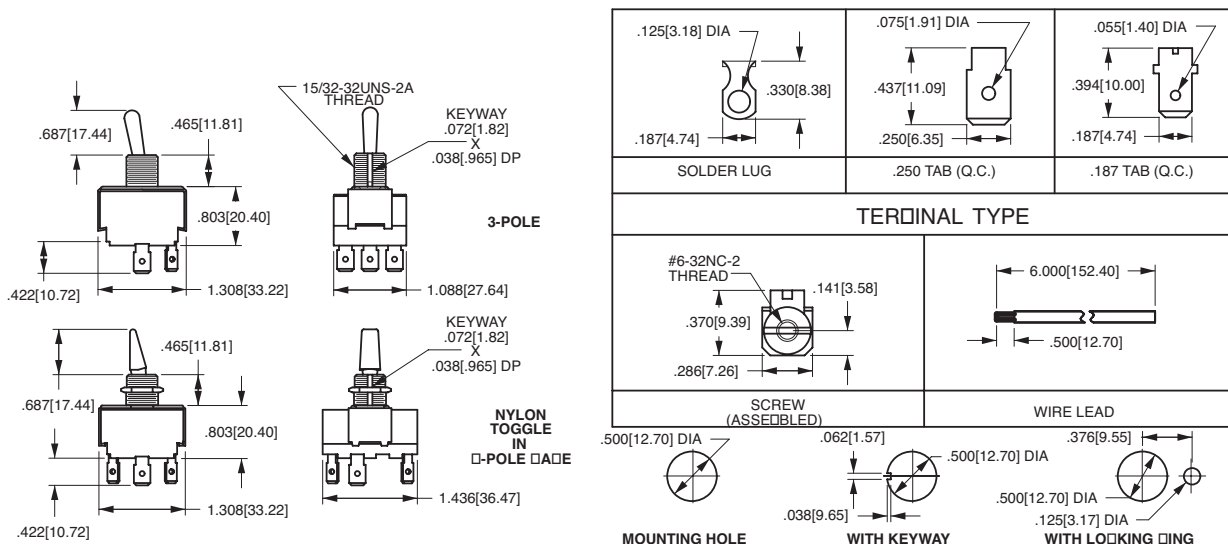
Additional ratings up to 20A 125VAC, 12A 250VAC, 1HP 120-240 VAC available. Consult factory for specifics.

2 ACTUATOR STYLE¹

BAT	unsealed	sealed	toggle length	bushing length
	73	78	0.687	0.465
	E3	E8	2.000	0.465
PADDLE ³	NBL3	NBL8	0.687	0.465

Notes:

- 1 Additional actuator options available. Consult factory for details.
- 2 Consult factory for .187 tab and combination screw/tab/solder lug termination callouts.
- 3 Nylon toggle with black ebanol plated bushing.
- () Indicates momentary function.



*Manufacturer reserves the right to change product specification without prior notice.