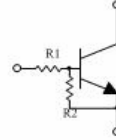


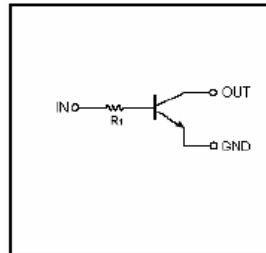
**Small Signal Diode**

**Features**

- ✧ Built-in bias resistors enable the configuration of an inverter circuit without connecting external input resistor (see equivalent circuit).
- ✧ The bias resistors consist of thin-film resistors with complete isolation to allow negative biasing of the input. They also have the advantage of almost completely eliminating parasitic effects.
- ✧ Only the on/off conditions need to be set for operation, marking device design easy.
- ✧ Green compound (Halogen free) with suffix "G" on packing code and prefix "G" on date code.



**equivalent circuit**



**Ordering Information**

Package	Part No.	Packing	Marking
SOT-723	DTC114 TM	8K / 7" Reel	04
SOT-523	DTC114 TE	3K / 7" Reel	04
SOT-323	DTC114 TUA	3K / 7" Reel	04
SOT-23	DTC114 TCA	3K / 7" Reel	04
TO-92S	DTC114 TSA	3K / 7" Reel	

**Maximum Ratings and Electrical Characteristics**

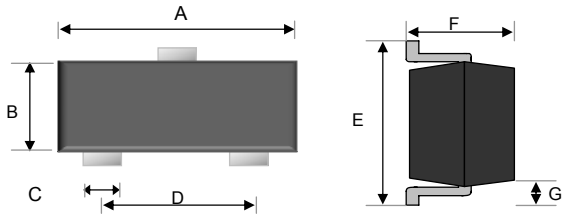
Rating at 25°C ambient temperature unless otherwise specified.

Type Number	Symbol	Value				Units
		TM	TE	EUA ECA	ESA	
Power Dissipation	PD	100	150	200	300	mW
Collector-Base Voltage	V <sub>CBO</sub>	50				V
Collector-Emitter Voltage	V <sub>CEO</sub>	50				V
Emitter-Base Voltage	V <sub>EBO</sub>	5				V
Collector Current -Continuous	I <sub>C</sub>	100				mA
Junction and Storage Temperature Range	T <sub>J</sub> , T <sub>STG</sub>	-55 to + 150				°C

Notes:1. Valid provided that electrodes are kept at ambient temperature

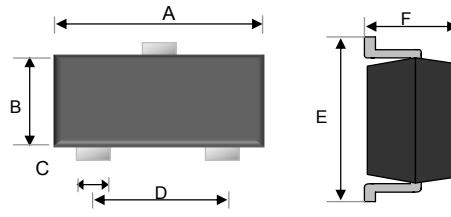
Parameter	Symbol	Min	Typ	Max	Condition	Unit
Collector-base breakdown voltage	V <sub>(BR)CBO</sub>	50			I <sub>C</sub> =50μA, I <sub>E</sub> =0	V
Collector-emitter breakdown voltage	V <sub>(BR)CEO</sub>	50			I <sub>C</sub> =1mA, I <sub>B</sub> =0	V
Emitter-base breakdown voltage	V <sub>(BR)EBO</sub>	5			I <sub>E</sub> =50μA, I <sub>C</sub> =0	V
Collector cut-off current	I <sub>CBO</sub>			0.5	V <sub>CB</sub> =50V, I <sub>E</sub> =0	μA
Emitter cut-off current	I <sub>EBO</sub>			0.5	V <sub>EB</sub> =4V, I <sub>C</sub> =0	μA
DC Current Gain	h <sub>FE</sub>	100	300	600	V <sub>CE</sub> =5V, I <sub>C</sub> =1mA	
Collector-emitter saturation voltage	V <sub>CE(sat)</sub>			0.3	I <sub>C</sub> =10mA, I <sub>B</sub> =1mA	V
Transition frequency	f <sub>T</sub>	250			V <sub>CE</sub> =10V, I <sub>E</sub> =-5mA, f=100MHz	MHz
Input resistor	R <sub>1</sub>	7	10	13		KΩ

SOT-23



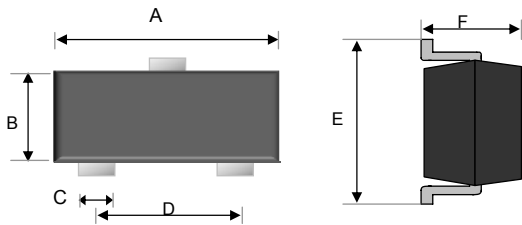
Dimensions	Unit (mm)		Unit (inch)	
	Min	Max	Min	Max
A	2.80	3.00	0.11	0.12
B	1.20	1.40	0.05	0.06
C	0.30	0.50	0.01	0.02
D	1.80	2.00	0.07	0.08
E	2.25	2.55	0.09	0.10
F	0.90	1.20	0.04	0.04
G	0.550 REF		0.022 REF	

SOT-323



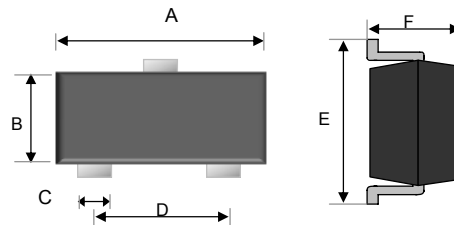
Dimensions	Unit (mm)		Unit (inch)	
	Min	Max	Min	Max
A	1.90	2.10	0.07	0.08
B	1.15	1.35	0.05	0.05
C	0.25	0.35	0.01	0.01
D	1.20	1.40	0.05	0.06
E	2.00	2.20	0.08	0.09
F	0.80	1.00	0.03	0.04

SOT-523



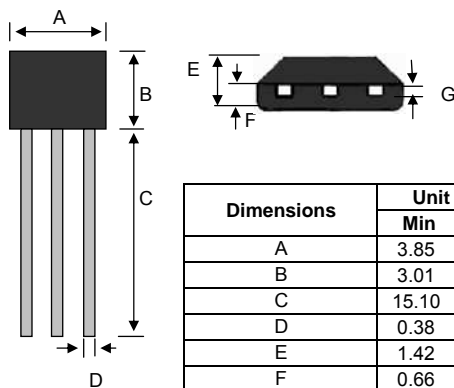
Dimensions	Unit (mm)		Unit (inch)	
	Min	Max	Min	Max
A	1.50	1.70	0.06	0.07
B	0.70	0.80	0.03	0.03
C	0.25	0.35	0.01	0.01
D	0.90	1.10	0.04	0.04
E	1.50	1.70	0.06	0.07
F	0.70	0.90	0.03	0.04

SOT-723



Dimensions	Unit (mm)		Unit (inch)	
	Min	Max	Min	Max
A	1.15	1.25	0.05	0.05
B	0.75	0.85	0.03	0.03
C	0.17	0.27	0.01	0.01
D	0.8 TYP		0.31 TYP	
E	1.15	1.25	0.05	0.05
F	0.50		0.02	

TO-92S



Dimensions	Unit (mm)		Unit (inch)	
	Min	Max	Min	Max
A	3.85	4.15	0.15	0.16
B	3.01	3.31	0.12	0.13
C	15.10	15.50	0.59	0.61
D	0.38	0.55	0.01	0.02
E	1.42	1.62	0.06	0.06
F	0.66	0.86	0.03	0.03
G	0.36	0.51	0.01	0.02